

(12) **United States Patent**
Lau et al.

(10) **Patent No.:** **US 11,249,196 B2**
(45) **Date of Patent:** ***Feb. 15, 2022**

(54) **METHOD AND APPARATUS FOR INTELLIGENT ACQUISITION OF POSITION INFORMATION**

(71) Applicant: **IpVenture, Inc.**, San Jose, CA (US)

(72) Inventors: **Chung Lau**, Sunnyvale, CA (US); **C. Douglass Thomas**, Saratoga, CA (US)

(73) Assignee: **IpVenture, Inc.**, San Jose, CA (US)

(*) Notice: Subject to any disclaimer, the term of this patent is extended or adjusted under 35 U.S.C. 154(b) by 0 days.

This patent is subject to a terminal disclaimer.

(21) Appl. No.: **17/129,726**

(22) Filed: **Dec. 21, 2020**

(65) **Prior Publication Data**

US 2021/0223404 A1 Jul. 22, 2021

Related U.S. Application Data

(63) Continuation of application No. 16/658,258, filed on Oct. 21, 2019, now Pat. No. 11,041,960, which is a continuation of application No. 15/700,498, filed on Sep. 11, 2017, now Pat. No. 10,761,214, which is a continuation of application No. 14/875,844, filed on Oct. 6, 2015, now Pat. No. 9,759,817, which is a continuation of application No. 13/802,574, filed on Mar. 13, 2013, now Pat. No. 9,182,238, which is a (Continued)

(51) **Int. Cl.**

G01S 19/34 (2010.01)
G06F 1/329 (2019.01)
G01C 21/20 (2006.01)
H04W 64/00 (2009.01)

G06F 1/3212 (2019.01)
G01S 19/42 (2010.01)

(52) **U.S. Cl.**

CPC **G01S 19/34** (2013.01); **G01C 21/20** (2013.01); **G01S 19/42** (2013.01); **G06F 1/329** (2013.01); **G06F 1/3212** (2013.01); **H04W 64/00** (2013.01)

(58) **Field of Classification Search**

USPC 701/149
See application file for complete search history.

(56) **References Cited**

U.S. PATENT DOCUMENTS

3,975,941 A 8/1976 Smith
4,719,920 A 1/1988 Alt et al.
(Continued)

FOREIGN PATENT DOCUMENTS

EP 0 874 529 A2 10/1998
EP 1 037 447 A2 9/2000
(Continued)

OTHER PUBLICATIONS

Notice of Allowance for U.S. Appl. No. 16/658,258, dated Jan. 19, 2021.

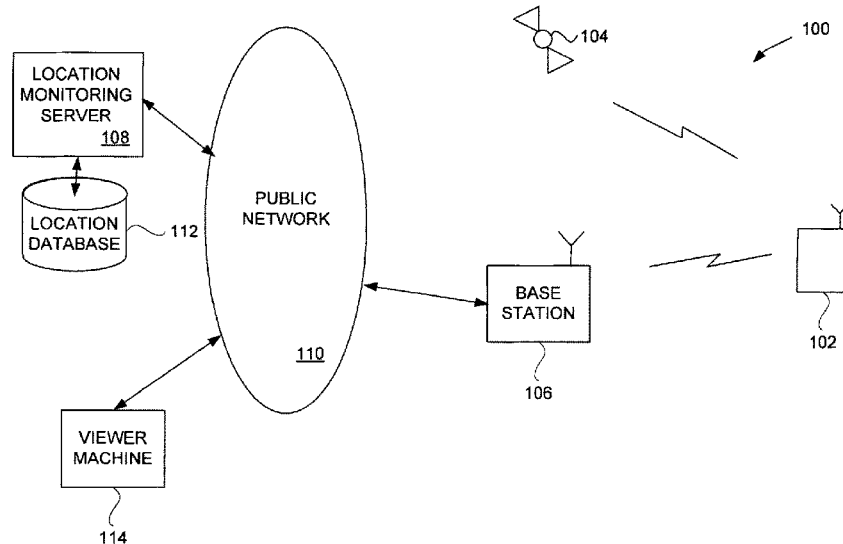
(Continued)

Primary Examiner — Tyler D Paige

(57) **ABSTRACT**

Improved methods and systems for position acquisition and/or monitoring are disclosed. The position acquisition and/or monitoring can be performed with improved intelligence so that data acquisition, transmission and/or processing is reduced. As a result, the position acquisition and/or monitoring is able to be performed in a power efficient manner.

32 Claims, 9 Drawing Sheets



Related U.S. Application Data

continuation of application No. 12/381,776, filed on Mar. 17, 2009, now Pat. No. 9,074,903, which is a continuation of application No. 11/124,475, filed on May 9, 2005, now Pat. No. 8,285,484, which is a continuation of application No. 10/397,473, filed on Mar. 26, 2003, now Pat. No. 6,975,941.

- (60) Provisional application No. 60/444,198, filed on Jan. 30, 2003, provisional application No. 60/418,491, filed on Oct. 15, 2002, provisional application No. 60/404,645, filed on Aug. 19, 2002, provisional application No. 60/375,998, filed on Apr. 24, 2002.

(56)

References Cited

U.S. PATENT DOCUMENTS

5,115,223 A	5/1992	Moody	5,835,907 A	11/1998	Newman
5,337,579 A	8/1994	Saia, III et al.	5,841,352 A	11/1998	Prakash
5,347,274 A	9/1994	Hassett	5,844,862 A	12/1998	Cocatre-Zilgien
5,353,034 A	10/1994	Sato et al.	5,850,196 A	12/1998	Mowers
5,384,824 A	1/1995	Alvesalo	5,852,775 A	12/1998	Hidary
5,389,934 A	2/1995	Kass	5,861,841 A	1/1999	Gildea et al.
5,394,333 A	2/1995	Kao	5,864,315 A	1/1999	Welles, II et al.
5,400,020 A	3/1995	Jones et al.	5,883,594 A	3/1999	Lau
5,422,814 A	6/1995	Sprague et al.	5,889,770 A	3/1999	Jokiaho et al.
5,422,816 A	6/1995	Sprague et al.	5,892,454 A	4/1999	Schipper et al.
5,448,773 A	9/1995	McBurney et al.	5,894,266 A	4/1999	Wood, Jr. et al.
5,461,365 A	10/1995	Schlager et al.	5,902,347 A	5/1999	Backman et al.
5,470,233 A	11/1995	Fruchterman et al.	5,905,461 A	5/1999	Neher
5,491,486 A	2/1996	Welles, II et al.	5,910,799 A	6/1999	Carpenter et al.
5,512,902 A	4/1996	Guthrie et al.	5,913,078 A	6/1999	Kimura et al.
5,515,858 A	5/1996	Myllymaki	5,917,433 A	6/1999	Keillor et al.
5,517,199 A	5/1996	DiMattei	5,918,180 A	6/1999	Dimino
5,528,247 A	6/1996	Nonami	5,928,309 A	7/1999	Korver et al.
5,528,518 A	6/1996	Bradshaw et al.	5,938,721 A	8/1999	Dussell et al.
5,532,690 A	7/1996	Hertel	5,940,004 A	8/1999	Fulton
5,539,748 A	7/1996	Raith	5,948,040 A	9/1999	DeLorme et al.
5,541,845 A	7/1996	Klein	5,948,043 A	9/1999	Mathis
5,543,789 A	8/1996	Behr et al.	5,949,812 A	9/1999	Turney et al.
5,550,551 A	8/1996	Alesio	5,950,125 A	9/1999	Buhrmann et al.
5,563,606 A	10/1996	Wang	5,959,575 A	9/1999	Abbott
5,568,119 A	10/1996	Schipper et al.	5,959,577 A	9/1999	Fan et al.
5,570,412 A	10/1996	LeBlanc	5,963,130 A	10/1999	Schlager et al.
5,576,716 A	11/1996	Sadler	5,982,285 A	11/1999	Bueche et al.
5,592,173 A	1/1997	Lau et al.	5,982,807 A	11/1999	Snell
5,598,460 A	1/1997	Tendler	5,983,108 A	11/1999	Kennedy, III et al.
5,604,708 A	2/1997	Helms et al.	5,983,158 A	11/1999	Suzuki et al.
5,608,909 A	3/1997	Atkinson et al.	5,991,690 A	11/1999	Murphy
5,623,260 A	4/1997	Jones	5,995,849 A	11/1999	Williams et al.
5,623,418 A	4/1997	Rostoker	6,002,363 A	12/1999	Krasner
5,627,517 A	5/1997	Theimer et al.	6,002,982 A	12/1999	Fry
5,629,678 A	5/1997	Gargano et al.	6,009,319 A	12/1999	Khullar et al.
5,633,874 A	5/1997	Diachina et al.	6,013,007 A	1/2000	Root et al.
5,650,770 A	7/1997	Schlager et al.	6,014,080 A	1/2000	Layson, Jr.
5,652,570 A	7/1997	Lepkofker	6,014,090 A	1/2000	Rosen et al.
5,673,692 A	10/1997	Schulze et al.	6,014,628 A	1/2000	Kovarik, Jr.
5,686,888 A	11/1997	Welles, II et al.	6,018,704 A	1/2000	Kohli et al.
5,710,551 A	1/1998	Ridgeway	6,023,241 A	2/2000	Clapper
5,712,619 A	1/1998	Simkin	6,031,496 A	2/2000	Kuittinen et al.
5,731,757 A	3/1998	Layson, Jr.	6,032,051 A	2/2000	Hall et al.
5,731,788 A	3/1998	Reeds	6,034,622 A	3/2000	Levine
5,742,233 A	4/1998	Hoffman et al.	6,052,646 A	4/2000	Kirkhart et al.
5,751,245 A	5/1998	Janky et al.	6,052,696 A	4/2000	Euler et al.
5,771,001 A	6/1998	Cobb	6,054,928 A	4/2000	Lemelson et al.
5,771,455 A	6/1998	Kennedy, III et al.	6,064,336 A	5/2000	Krasner
5,774,876 A	6/1998	Woolley et al.	6,067,018 A	5/2000	Skelton et al.
5,786,789 A	7/1998	Janky	6,067,044 A	5/2000	Whelan et al.
5,797,091 A	8/1998	Clise et al.	6,067,082 A	5/2000	Enmei
5,806,018 A	9/1998	Smith et al.	6,072,396 A	6/2000	Gaukel
5,808,565 A	9/1998	Matta et al.	6,075,987 A	6/2000	Camp, Jr. et al.
RE35,920 E	10/1998	Sorden et al.	6,078,290 A	6/2000	McBurney et al.
5,825,283 A	10/1998	Camhi	6,083,248 A	7/2000	Thompson
5,826,195 A	10/1998	Westerlage et al.	6,083,353 A	7/2000	Alexander, Jr.
5,828,953 A	10/1998	Kawase	6,085,090 A	7/2000	Yee et al.
			6,094,168 A	7/2000	Duffett-Smith et al.
			6,094,642 A	7/2000	Stephenson et al.
			6,100,670 A	8/2000	Levesque
			6,100,806 A	8/2000	Gaukel
			6,101,710 A	8/2000	Selinger et al.
			6,104,334 A	8/2000	Allport
			6,111,538 A	8/2000	Schuchman et al.
			6,111,540 A	8/2000	Krasner
			6,115,595 A	9/2000	Rodal et al.
			6,121,921 A	9/2000	Ishigaki
			6,125,325 A	9/2000	Kohli et al.
			6,131,067 A	10/2000	Gierd et al.
			6,140,863 A	10/2000	Fujisawa
			6,140,957 A	10/2000	Wilson et al.
			6,141,570 A	10/2000	O'Neill, Jr. et al.
			6,144,303 A	11/2000	Federman
			6,148,280 A	11/2000	Kramer
			6,154,422 A	11/2000	Shinkawa et al.
			6,163,696 A	12/2000	Bi et al.
			6,169,902 B1	1/2001	Kawamoto
			6,171,264 B1	1/2001	Bader

(56)

References Cited

U.S. PATENT DOCUMENTS

6,172,640	B1	1/2001	Durst et al.	6,442,380	B1	8/2002	Mohindra
6,175,616	B1	1/2001	Light et al.	6,442,391	B1	8/2002	Johansson et al.
6,198,390	B1	3/2001	Schlager et al.	6,443,890	B1	9/2002	Schulze et al.
6,198,431	B1	3/2001	Gibson	6,445,937	B1	9/2002	daSilva
6,198,930	B1	3/2001	Schipper	6,453,237	B1	9/2002	Fuchs et al.
6,199,045	B1	3/2001	Giniger et al.	6,463,272	B1	10/2002	Wallace et al.
6,204,807	B1	3/2001	Odagiri et al.	6,466,821	B1	10/2002	Pianca et al.
6,208,934	B1	3/2001	Bechtolsheim et al.	6,469,639	B2	10/2002	Tanenhaus et al.
6,212,133	B1	4/2001	McCoy et al.	6,478,736	B1	11/2002	Mault
6,225,944	B1	5/2001	Hayes	6,484,034	B1	11/2002	Tsunehara et al.
6,226,622	B1	5/2001	Dabbieri	6,496,775	B2	12/2002	McDonald, Jr. et al.
6,231,519	B1	5/2001	Blants et al.	6,501,429	B2	12/2002	Nakamura et al.
6,232,916	B1	5/2001	Grillo et al.	6,505,048	B1	1/2003	Moles et al.
6,236,358	B1	5/2001	Durst et al.	6,505,049	B1	1/2003	Dorenbosch
6,238,337	B1	5/2001	Kambhatla et al.	6,512,456	B1	1/2003	Taylor, Jr.
6,243,039	B1	6/2001	Elliot	6,513,532	B2	2/2003	Mault et al.
6,243,660	B1	6/2001	Hsu et al.	6,522,871	B1	2/2003	Patrick et al.
6,246,376	B1	6/2001	Bork et al.	6,522,889	B1	2/2003	Aarnio
6,252,543	B1	6/2001	Camp	6,529,164	B1	3/2003	Carter
6,252,544	B1	6/2001	Hoffberg	6,529,822	B1	3/2003	Millington et al.
6,259,944	B1	7/2001	Margulis et al.	6,544,193	B2	4/2003	Abreu
6,263,280	B1	7/2001	Stingone, Jr.	6,552,652	B2	4/2003	Beken
6,266,612	B1	7/2001	Dussell et al.	6,553,310	B1	4/2003	Lopke
6,272,457	B1	8/2001	Ford et al.	6,553,336	B1	4/2003	Johnson et al.
6,278,936	B1	8/2001	Jones	6,559,620	B2	5/2003	Zhou et al.
6,281,797	B1	8/2001	Forster et al.	6,560,463	B1	5/2003	Santhoff
6,282,362	B1	8/2001	Murphy et al.	6,569,094	B2	5/2003	Suzuki et al.
6,282,495	B1	8/2001	Kirkhart et al.	6,571,193	B1	5/2003	Unuma et al.
6,285,314	B1	9/2001	Nagatsuma et al.	6,579,231	B1	6/2003	Phipps
6,289,464	B1	9/2001	Wecker et al.	6,579,844	B1	6/2003	Morrison et al.
6,292,687	B1	9/2001	Lowell et al.	6,611,688	B1	8/2003	Raith
6,298,306	B1	10/2001	Suarez et al.	6,616,593	B1	9/2003	Elliott et al.
6,300,875	B1	10/2001	Schafer	6,625,437	B1	9/2003	Jampolsky et al.
6,302,844	B1	10/2001	Walker et al.	6,630,885	B2	10/2003	Hardman et al.
6,304,467	B1	10/2001	Nebrigic	6,640,085	B1	10/2003	Chatzipetros et al.
6,314,308	B1	11/2001	Sheynblat et al.	6,650,907	B1	11/2003	Kamperschroer et al.
6,315,719	B1	11/2001	Rode et al.	6,661,372	B1	12/2003	Girerd et al.
6,317,049	B1	11/2001	Toubia et al.	6,679,071	B1	1/2004	Storey et al.
6,321,091	B1	11/2001	Holland	6,696,982	B2	2/2004	Yoshioka et al.
6,321,158	B1	11/2001	DeLorme et al.	6,697,103	B1	2/2004	Fernandez et al.
6,323,807	B1	11/2001	Golding et al.	6,697,730	B2	2/2004	Dickerson
6,324,213	B1	11/2001	Harrison	6,714,158	B1	3/2004	Underbrink et al.
6,327,533	B1	12/2001	Chou	6,714,791	B2	3/2004	Friedman
6,330,149	B1	12/2001	Burrell	6,721,542	B1	4/2004	Anttila et al.
6,331,817	B1	12/2001	Goldberg	6,737,989	B2	5/2004	Flick
6,331,825	B1	12/2001	Ladner et al.	6,741,927	B2	5/2004	Jones
6,339,397	B1	1/2002	Baker	6,747,675	B1	6/2004	Abbott et al.
6,340,928	B1	1/2002	McCurdy	6,748,318	B1	6/2004	Jones
6,342,847	B1	1/2002	Archuleta et al.	6,788,766	B2	9/2004	Logan
6,349,257	B1	2/2002	Liu et al.	6,801,853	B2	10/2004	Workman
6,353,390	B1	3/2002	Beri et al.	6,804,606	B2	10/2004	Jones
6,353,798	B1	3/2002	Green et al.	6,819,269	B2	11/2004	Flick
6,356,836	B1	3/2002	Adolph	6,825,767	B2	11/2004	Humbard
6,356,841	B1	3/2002	Hamrick et al.	6,832,093	B1	12/2004	Ranta
6,362,778	B2	3/2002	Neher	6,847,892	B2	1/2005	Zhou et al.
6,363,254	B1	3/2002	Jones et al.	6,856,804	B1	2/2005	Ciotta
6,363,323	B1	3/2002	Jones	6,856,807	B1	2/2005	Raith
6,366,871	B1	4/2002	Geva	6,865,385	B1	3/2005	Kohda et al.
6,373,430	B1	4/2002	Beason et al.	6,876,862	B1	4/2005	Tanaka
6,377,810	B1	4/2002	Geiger et al.	6,888,879	B1	5/2005	Lennen
6,384,724	B1	5/2002	Landais	6,937,900	B1	8/2005	Pianca et al.
6,388,612	B1	5/2002	Neher	6,952,645	B1	10/2005	Jones
6,393,346	B1	5/2002	Keith et al.	6,975,941	B1	12/2005	Lau et al.
6,404,352	B1	6/2002	Ichikawa et al.	6,980,813	B2	12/2005	Mohi et al.
6,407,698	B1	6/2002	Ayed	6,980,826	B2	12/2005	Yamaguchi
6,411,892	B1	6/2002	Van Diggelen	6,997,882	B1	2/2006	Parker et al.
6,411,899	B2	6/2002	Dussell et al.	7,003,273	B1	2/2006	Shimanuki et al.
6,421,538	B1	7/2002	Byrne	7,010,144	B1	3/2006	Davis et al.
6,426,719	B1	7/2002	Nagareda et al.	7,071,842	B1	7/2006	Brady, Jr.
6,427,120	B1	7/2002	Garin et al.	7,085,253	B2	8/2006	Yang
6,430,602	B1	8/2002	Kay et al.	7,110,773	B1	9/2006	Wallace et al.
6,433,732	B1	8/2002	Dutta et al.	7,136,832	B2	11/2006	Li et al.
6,434,396	B1	8/2002	Rune	7,187,278	B2	3/2007	Biffar
6,437,692	B1	8/2002	Petite et al.	7,212,829	B1	5/2007	Lau et al.
6,441,778	B1	8/2002	Durst et al.	7,218,938	B1	5/2007	Lau et al.
				7,253,731	B2	8/2007	Joao
				7,308,272	B1	12/2007	Wortham
				7,321,774	B1	1/2008	Lau et al.
				7,325,061	B2	1/2008	Haruki

(56)

References Cited

U.S. PATENT DOCUMENTS

7,366,522 B2	4/2008	Thomas	2002/0027507 A1	3/2002	Yarin et al.	
7,375,682 B1	5/2008	Tester et al.	2002/0028988 A1	3/2002	Suzuki et al.	
7,403,972 B1	7/2008	Lau et al.	2002/0036593 A1	3/2002	Ying	
7,482,920 B2	1/2009	Joao	2002/0038182 A1	3/2002	Wong et al.	
7,539,557 B2	5/2009	Yamauchi	2002/0047649 A1	4/2002	Fregoso et al.	
7,663,502 B2	2/2010	Breed	2002/0049742 A1	4/2002	Chan et al.	
7,809,377 B1	10/2010	Lau et al.	2002/0050945 A1	5/2002	Tsukishima et al.	
7,905,832 B1	3/2011	Lau et al.	2002/0052794 A1*	5/2002	Bhadra	G06Q 20/203 705/22
7,953,809 B2	5/2011	Lau et al.	2002/0055362 A1	5/2002	Aoyama	
8,131,326 B2	3/2012	Persico	2002/0057192 A1	5/2002	Eagleson et al.	
8,176,135 B2	5/2012	Lau et al.	2002/0063622 A1	5/2002	Armstrong et al.	
8,285,484 B1	10/2012	Lau et al.	2002/0070862 A1	6/2002	Francis et al.	
8,301,158 B1	10/2012	Thomas	2002/0071677 A1	6/2002	Sumanaweera	
8,447,822 B2	5/2013	Lau et al.	2002/0077080 A1	6/2002	Greene	
8,611,920 B2	12/2013	Lau et al.	2002/0087260 A1	7/2002	Hancock et al.	
8,620,343 B1	12/2013	Lau et al.	2002/0087619 A1	7/2002	Tripathi	
8,700,050 B1	4/2014	Thomas	2002/0092448 A1	7/2002	Park	
8,725,165 B2	5/2014	Lau et al.	2002/0094067 A1	7/2002	August	
8,753,273 B1	6/2014	Lau et al.	2002/0099567 A1	7/2002	Joao	
8,868,103 B2	10/2014	Thomas	2002/0111171 A1	8/2002	Boesch et al.	
8,886,220 B2	11/2014	Lau et al.	2002/0111819 A1	8/2002	Li et al.	
8,975,941 B2	3/2015	Zierhofer	2002/0115450 A1	8/2002	Muramatsu	
9,049,571 B2	6/2015	Lau et al.	2002/0115453 A1	8/2002	Poulin et al.	
9,074,903 B1	7/2015	Lau et al.	2002/0116080 A1	8/2002	Birnbach et al.	
9,082,103 B2	7/2015	Breed	2002/0119770 A1	8/2002	Twitchell et al.	
9,182,238 B2*	11/2015	Lau	2002/0119789 A1	8/2002	Friedman	
9,219,988 B2	12/2015	Lau et al.	2002/0120394 A1	8/2002	Rayne	
9,456,350 B2	9/2016	Lau et al.	2002/0120475 A1	8/2002	Morimoto	
9,596,579 B2	3/2017	Lau et al.	2002/0120503 A1	8/2002	Iwayama et al.	
9,706,374 B2	7/2017	Lau et al.	2002/0123353 A1	9/2002	Savoie	
9,723,442 B2	8/2017	Lau et al.	2002/0138196 A1	9/2002	Polidi et al.	
9,759,817 B2	9/2017	Lau et al.	2002/0140081 A1	10/2002	Chou et al.	
9,769,630 B2	9/2017	Lau et al.	2002/0173910 A1	11/2002	McCall et al.	
9,930,503 B2	3/2018	Lau et al.	2002/0177476 A1*	11/2002	Chou	G01S 5/0027 455/574
9,998,886 B2	6/2018	Lau et al.	2002/0191757 A1	12/2002	Belrose	
10,034,150 B2	7/2018	Lau et al.	2002/0193121 A1	12/2002	Nowak et al.	
10,152,876 B2	12/2018	Joao	2002/0193996 A1	12/2002	Squibbs et al.	
10,327,115 B2	6/2019	Lau et al.	2002/0198003 A1	12/2002	Klapman	
10,356,568 B2	7/2019	Lau et al.	2002/0198055 A1	12/2002	Bull et al.	
10,516,975 B2	12/2019	Lau et al.	2003/0001775 A1*	1/2003	Turner	G01S 5/0284 342/357.48
10,609,516 B2	3/2020	Lau et al.	2003/0003943 A1	1/2003	Bajikar	
10,614,408 B2	4/2020	Lau et al.	2003/0009410 A1	1/2003	Ramankutty et al.	
10,628,783 B2	4/2020	Lau et al.	2003/0013445 A1	1/2003	Fujiwara et al.	
10,652,690 B2	5/2020	Lau et al.	2003/0018430 A1	1/2003	Ladetto et al.	
10,664,789 B2	5/2020	Lau et al.	2003/0036389 A1	2/2003	Yen	
10,715,970 B2	7/2020	Lau et al.	2003/0036683 A1	2/2003	Kehr et al.	
10,761,214 B2*	9/2020	Lau	2003/0054827 A1	3/2003	Schmidl et al.	
10,827,298 B2	11/2020	Lau et al.	2003/0068605 A1	4/2003	Kullok et al.	
10,848,932 B2	11/2020	Lau et al.	2003/0069759 A1	4/2003	Smith	
10,873,828 B2	12/2020	Lau et al.	2003/0083011 A1	5/2003	Haller et al.	
11,032,677 B2	6/2021	Lau et al.	2003/0083046 A1	5/2003	Mathis	
11,041,960 B2	6/2021	Lau et al.	2003/0083814 A1	5/2003	Gronemeyer	
11,054,527 B2	7/2021	Lau et al.	2003/0095540 A1	5/2003	Mulligan et al.	
11,067,704 B2	7/2021	Lau et al.	2003/0100326 A1	5/2003	Grube et al.	
2001/0006891 A1	7/2001	Cho	2003/0101225 A1	5/2003	Han et al.	
2001/0020202 A1	9/2001	Obradovich et al.	2003/0107514 A1	6/2003	Syrjarinne et al.	
2001/0020204 A1	9/2001	Runyon et al.	2003/0110003 A1	6/2003	Topmiller	
2001/0022558 A1	9/2001	Karr, Jr. et al.	2003/0114206 A1	6/2003	Timothy et al.	
2001/0023448 A1	9/2001	Hanhan	2003/0151507 A1	8/2003	Andre et al.	
2001/0026240 A1	10/2001	Neher	2003/0163287 A1	8/2003	Vock et al.	
2001/0027378 A1	10/2001	Tennison et al.	2003/0182052 A1	9/2003	DeLorme	
2001/0027384 A1	10/2001	Schulze et al.	2003/0204132 A1	10/2003	Suzuki et al.	
2001/0027525 A1	10/2001	Gamlin	2004/0034470 A1	2/2004	Workman	
2001/0028304 A1	10/2001	I'Anson et al.	2004/0046637 A1	3/2004	Wesby Van Swaay	
2001/0041554 A1	11/2001	Rowell	2004/0114731 A1	6/2004	Gillett et al.	
2001/0044299 A1	11/2001	Sandegren	2004/0117108 A1	6/2004	Nemeth	
2001/0044332 A1	11/2001	Yamada et al.	2004/0172566 A1	9/2004	Greiger et al.	
2001/0047125 A1	11/2001	Quy	2004/0180701 A1	9/2004	Livet et al.	
2001/0052849 A1	12/2001	Jones, Jr.	2004/0192352 A1	9/2004	Vallstrom et al.	
2001/0053699 A1	12/2001	McCrary et al.	2004/0203352 A1	10/2004	Hall	
2002/0000916 A1	1/2002	Richards	2004/0204820 A1	10/2004	Diaz	
2002/0000930 A1	1/2002	Crowson et al.	2004/0233065 A1	11/2004	Freeman	
2002/0008661 A1	1/2002	McCall et al.	2005/0046584 A1	3/2005	Breed	
2002/0015439 A1	2/2002	Kohli et al.	2005/0068169 A1	3/2005	Copley et al.	
2002/0016173 A1	2/2002	Hunzinger	2005/0250440 A1	11/2005	Zhou et al.	
			2005/0278063 A1	12/2005	Hersh et al.	

(56)

References Cited

OTHER PUBLICATIONS

U.S. PATENT DOCUMENTS

2006/0073851	A1	4/2006	Colando et al.
2006/0129691	A1	6/2006	Coffee et al.
2006/0139375	A1	6/2006	Rasmussen et al.
2006/0173444	A1	8/2006	Choy et al.
2006/0211430	A1	9/2006	Persico
2007/0156286	A1	7/2007	Yamauchi
2007/0242131	A1	10/2007	Sanz-Pastor et al.
2008/0021645	A1	1/2008	Lau et al.
2008/0261636	A1	10/2008	Lau et al.
2009/0042540	A1	2/2009	Bodnar et al.
2011/0022533	A1	1/2011	Lau et al.
2011/0223884	A1	9/2011	Lau et al.
2012/0220266	A1	8/2012	Lau et al.
2013/0203388	A1	8/2013	Thomas et al.
2013/0297524	A1	11/2013	Lau et al.
2014/0011524	A1	1/2014	Lau et al.
2014/0067708	A1	3/2014	Lau et al.
2014/0273953	A1	9/2014	Lau et al.
2014/0278084	A1	9/2014	Lau et al.
2014/0296659	A1	10/2014	Lau et al.
2015/0011243	A1	1/2015	Thomas et al.
2015/0038168	A1	2/2015	Thomas et al.
2015/0264576	A1	9/2015	Lau et al.
2016/0025863	A1	1/2016	Lau et al.
2016/0029175	A1	1/2016	Lau et al.
2016/0050533	A1	2/2016	Lau et al.
2017/0013426	A1	1/2017	Lau et al.
2017/0094458	A1	3/2017	Thomas et al.
2017/0111776	A1	4/2017	Lau et al.
2017/0111777	A1	4/2017	Lau et al.
2017/0188208	A1	6/2017	Lau et al.
2017/0295462	A1	10/2017	Lau et al.
2017/0353841	A1	12/2017	Lau et al.
2018/0011201	A1	1/2018	Lau et al.
2018/0027394	A1	1/2018	Lau et al.
2018/0211216	A1	7/2018	Lau et al.
2018/0213372	A1	7/2018	Lau et al.
2018/0255439	A1	9/2018	Lau et al.
2018/0302759	A1	10/2018	Lau et al.
2019/0215643	A1	7/2019	Lau et al.
2020/0064491	A1	2/2020	Lau et al.
2020/0077236	A1	3/2020	Lau et al.
2020/0226542	A1	7/2020	Lau et al.
2020/0242551	A1	7/2020	Lau et al.
2020/0304963	A1	9/2020	Lau et al.
2020/0326429	A1	10/2020	Lau et al.
2020/0355833	A1	11/2020	Lau et al.
2021/0142272	A1	5/2021	Lau et al.
2021/0160651	A1	5/2021	Lau et al.
2021/0297816	A1	9/2021	Lau et al.

FOREIGN PATENT DOCUMENTS

EP	1 037 447	A3	10/2001
JP	09251069	A	9/1997
JP	11-64482		3/1999
JP	11-258325		9/1999
JP	11-289574		10/1999
JP	11-306491		11/1999
JP	2001344678	A	12/2001
WO	WO 97/14054		4/1997
WO	WO 97/41654	A1	11/1997
WO	WO 98/01769	A1	1/1998
WO	WO 98/16045	A1	4/1998
WO	WO 98/40837		9/1998
WO	WO 00/51391		8/2000
WO	WO 01/50151	A1	7/2001
WO	WO 01/63318	A1	8/2001
WO	WO 01/75700	A2	10/2001
WO	WO 02/42979	A1	5/2002
WO	WO 02/084618	A1	10/2002
WO	WO 03/012720	A1	2/2003

Notice of Allowance for U.S. Appl. No. 16/938,034, dated Jan. 26, 2021.

Office Action for U.S. Appl. No. 16/983,034, dated Jan. 7, 2021.
Danger Product Overview, Danger, Inc., date unknown, 5 pgs.

PCVtrak™ Installation and Operator's Manual, Trimble Navigation, 24623-00 Rev. A, May 1994, pp. 1-259.

"Advanced Traveler Aid Systems for Public Transportation," Final Report, Federal Transit Administration, Sep. 1994, pp. 1-131.

Campbell, Laurel, "SECURITY—Military satellite enlisted to thwart car crime," The Commercial Appeal, Sep. 26, 1996, pp. 5B.

Law, Alex, "Week in Wheels/ . . . From a Driver's Notebook," Newsday, Inc., Sep. 20, 1996, pp. C03.

Cortez, Angela, "Springs police can track thief, vehicles," The Denver Post, Sep. 10, 1996, pp. B-01.

"OnGuard Tracker Nabs Auto Burglar," Global Positioning & Navigation News, vol. 6, No. 16, Aug. 8, 1996.

"OnGuard Tracker Nabs Auto Burglar," Section: Financial News, PR Newswire, Jul. 29, 1996.

Nauman, Matt, "Pressing the Panic Button: Car Security Enters a New Age with Cellular Phones and Satellites that Watch Over You," San Jose Mercury News, Jun. 21, 1996, pp. 1G.

"Monday Briefing" San Antonio Express-News, p. 1, Part B, Jun. 10, 1996.

"OnGuard Tracker Makes Debut on 'One Lap of America,'" PR Newswire, Jun. 7, 1996.

"OnGuard Tracker Makes Debut on 'One Lap of America,'" Southwest Newswire, Jun. 7, 1996.

Dominguez, Raul, "Women get their day in sun—American Golf planning events nationwide May 18," San Antonio Express-News, Apr. 18, 1996, pp. 2, part B.

"Vehicle Navigation Units Being Measured in Luxury Autos," Global Positioning & Navigation News, vol. 6, No. 7, Apr. 4, 1996.

"Advanced Business Sciences, Inc. Announces Completion of Acquisition of Comguard of Illinois," Business Wire, Aug. 26, 1998.

"Advanced Business Sciences, Inc. Announces Filing With Securities and Exchange Commission," Business Wire, Jun. 25, 1999.

"Advanced Business Sciences, Inc. Announces Preliminary Fourth Quarter 1998 Revenue Results," Business Wire, Feb. 4, 1999.

"Business People Burns's Grill Names Two," Omaha World-Herald, Section Business, p. 4M, Oct. 20, 1996.

"Company Sees Prisoner Tracking and Monitoring Market Niche," Global Positioning & Navigation News, vol. 6, No. 10, May 16, 1996.

GPS-Based Personal Monitoring Systems Offered to Corrections, Private Market, Global Positioning & Navigation News, vol. 8, No. 11, Jun. 3, 1998.

GPS tracks parolees, probationers, Corrections Professional, vol. 5, No. 6, Nov. 19, 1999.

High-Tech System Tracks Offenders—Satellites Watching Criminals, Business Wire, Nov. 14, 1997.

Briefs, Global Positioning & Navigation News, vol. 9, No. 4, Feb. 24, 1999.

Dunkelberger, Lloyd, "Lawmakers question criminal-tracking system," Sarasota Herald-Tribune (Florida), pp. 16A, Nov. 28, 1999.

Powell, Barbara, "New gadgets help drivers find their way," Fort Worth Star-Telegram (Texas), p. 1, Jan. 20, 1997.

"New Service Lets Corrections Agencies Track Offenders by Satellite," PR Newswire, Jan. 11, 1999.

"New Service Lets Corrections Agencies Track Offenders by Satellite; SecurityLink Offers 'GPS' Tracking for Offenders on Electronic Monitoring—Sandusky Municipal Court Adopts Technology for Local Offenders," PR Newswire, Jan. 12, 1999.

"New Service Lets Corrections Agencies Track Offenders by Satellite; SecurityLink Offers 'GPS' Tracking for Offenders on Electronic Monitoring," PR Newswire, Section: Financial News, Jan. 11, 1999.

"New Service Lets Corrections Agencies Track Offenders by Satellite," Satellite Today, vol. 2, No. 8, Jan. 13, 1999.

"Prisoner Security Monitoring Company Grabs Contracts for GPS-Based System," Global Positioning & Navigation News, vol. 7, No. 1, Jan. 15, 1997.

(56)

References Cited

OTHER PUBLICATIONS

- Atwater, Andi, "Proposal seeking 24-hour tracking of all sex offenders," *The News-Press* (Fort Meyers, FL), pp. 1A, Feb. 20, 2000.
- Briefs, *Global Positioning & Navigation News*, vol. 9, No. 3, Feb. 10, 1999.
- Brauer, David, "Satellite 'Big Brother' Tracks Ex-Inmates; Agencies Experiment with GPS to Monitor Parolee Whereabouts," *Chicago Tribune*, Section: News, p. 31, Dec. 18, 1998.
- "Satellite Spotlight; Eye in the Sky to Monitor Parolees," *Satellite News*, vol. 21, No. 15, Apr. 13, 1998.
- "Satellite Spotlight: Fighting Crime From Space," *Satellite News*, vol. 19, No. 20, May 13, 1996.
- Prohaska, Thomas J, "Satellite Will Keep Tabs on Convicts," *Buffalo News* (New York), Section: Local, p. 5B, Sep. 20, 1999.
- "Sierra Wireless and Pro Tech Team Up on Monitoring Product," *Global Positioning & Navigation News*, vol. 8, No. 8, Apr. 22, 1998.
- Anderson, Larry, "Technology rules at Securing New Ground," *Access Control & Security Systems Integration*, Section: Industry Outlook; ISSN 1084-6425, Dec. 1999.
- Trimble Navigation Warns 2nd-Quarter Earnings to Miss Target, *Dow Jones Business News*, Jul. 10, 1998.
- "Trimble Navigation's Net Income Skidded 93% Amid Order Delays," *Dow Jones Business News*, Jul. 23, 1998.
- Briefs, *Global Positioning & Navigation News*, vol. 9, No. 2, Jan. 27, 1999.
- Briefs, *Global Positioning & Navigation News*, vol. 9, No. 14, Jul. 14, 1999.
- Dailey et al. "Automatic Transit Location System," *Final Research Report*, 55 pgs., Feb. 1996.
- Maguire, Jr. et al. "SmartBadges: a wearable computer and communication system," *codes/CASHE '98*, 47 pgs., 1998.
- Koshima et al. "Personal locator services emerge," *IEEE Spectrum*, Feb. 2000, pp. 41-48.
- Zygowicz et al. "State of the Art in Automatic Vehicle Location Systems," *Center for Urban Transportation Studies*, University of Wisconsin, Milwaukee, Feb. 1998.
- Ashworth, Jon. "Big brother is watching you," *The Times* (London), Section: Features, May 7, 1999.
- "Car Thieves Take the 'Bait' in Michigan; Two Suspects Reeled in With OnGuard," *Business Wire*, Sep. 11, 1997.
- Sauer, Matthew, "Company Finds Niche by Giving Directions . . ." *Sarasota Herald-Tribune* (Florida), Section: Business Weekly, p. 1, Jul. 7, 1997.
- "ATX Technologies Signs Nationwide Service Deal with AT&T," *Global Positioning & Navigation News*, vol. 7, No. 9, May 7, 1997.
- "Car Thieves Take the 'Bait' in Tulsa; Two Suspects Caught Off Guard with OnGuard Once Again," *PR Newswire*, Section: Financial News, Jan. 8, 1997.
- "Car Thieves Take the 'Bait' in Tulsa; Two Suspects Caught Off Guard with on Guard," *PR Newswire*, Section: Financial News, Dec. 9, 1996.
- Jackson, Terry, "Smart Cars Whether by Satellite or the Internet, High-Tech Devices and Services May Make Crumpled Road Maps a Thing of the Past," *The Miami Herald*, Section: Travel, p. 1J, Oct. 6, 1996.
- "San Antonio Personal Security Company Links Up with Senior PGA Golfer," *PR Newswire*, Section: Financial News, Apr. 1, 1996.
- "San Antonio Personal Security Company Links Up with Senior PGA Golfer," *Southwest Newswire*, Apr. 1, 1996.
- Business Briefs*, *San Antonio Express-News*, Mar. 25, 1996.
- "ATX Research Signs Exclusive Sales Agreement with Arizona Company," *PR Newswire*, Mar. 21, 1996.
- "ATX Research Signs Exclusive Sales Agreement with Arizona Company," *Southwest Newswire*, Mar. 21, 1996.
- "Automotive GPS Satellite/Safety System Race Is on," *Southwest Newswire*, Feb. 20, 1996.
- "Dealerships Can Track Down New Aftermarket Revenues," *PR Newswire*, Feb. 9, 1996.
- "ATX Research Unveils New Stealthtrac Capability," *PR Newswire*, Feb. 9, 1996.
- "Dealerships Can Track Down New Aftermarket Revenues," *Southwest Newswire*, Feb. 9, 1996.
- Briefs, *Global Positioning & Navigation News Wire*, vol. 6, No. 2, Jan. 24, 1996.
- "ATX Research Provides Police Departments With OnGuard Personal Security and Vehicle Tracking System," *PR Newswire*, Jan. 15, 1996.
- "ATX Research Provides Police Departments With OnGuard Personal Security and Vehicle Tracking System," *Southwest Newswire*, Jan. 15, 1996.
- "ATX Research Relocates to New Corporate Headquarters," *PR Newswire*, Dec. 12, 1995.
- "ATX Research Relocates to New Corporate Headquarters," *Southwest Newswire*, Dec. 12, 1995.
- "Texas invention tracks stolen cars, lets driver call for help," *The Vancouver Sun*, Oct. 20, 1995.
- "San Antonio Company Unveils Satellite/Cellular Personal Security System," *PR Newswire*, Oct. 3, 1995.
- "San Antonio Company Unveils Satellite/Cellular Personal Security System," *Southwest Newswire*, Oct. 3, 1995.
- Notice of Allowance for U.S. Appl. No. 16/896,357, dated Feb. 17, 2021.
- Office Action for U.S. Appl. No. 10/397,473, dated Nov. 25, 2003.
- Office Action for U.S. Appl. No. 10/397,473, dated Jun. 8, 2004.
- Office Action for U.S. Appl. No. 10/397,473, dated Nov. 17, 2004.
- Notice of Allowance for U.S. Appl. No. 10/397,473, dated Mar. 29, 2005.
- Notice of Allowance for U.S. Appl. No. 10/397,473, dated Jun. 9, 2005.
- Notice of Allowance for U.S. Appl. No. 10/397,473, dated Nov. 3, 2005.
- Notice of Allowance for U.S. Appl. No. 11/124,475, dated Jun. 22, 2012.
- Notice of Allowance for U.S. Appl. No. 11/124,475, dated Mar. 30, 2012.
- Non-Final Office Action for U.S. Appl. No. 11/124,475, dated Dec. 5, 2011.
- Non-Final Office Action for U.S. Appl. No. 11/124,475, dated Jun. 30, 2011.
- Advisory Action for U.S. Appl. No. 11/124,475, dated Apr. 19, 2011.
- Office Action for U.S. Appl. No. 11/124,475, dated Jan. 12, 2011.
- Office Action for U.S. Appl. No. 11/124,475, dated Jul. 7, 2010.
- Advisory Action for U.S. Appl. No. 11/124,475, dated Mar. 5, 2010.
- Office Action for U.S. Appl. No. 11/124,475, dated Aug. 11, 2009.
- Office Action for U.S. Appl. No. 11/124,475, dated Dec. 18, 2009.
- Office Action for U.S. Appl. No. 11/124,475, dated Jun. 30, 2008.
- Office Action for U.S. Appl. No. 11/124,475, dated Dec. 31, 2008.
- Advisory Action for U.S. Appl. No. 11/124,475, dated Mar. 13, 2008.
- Office Action for U.S. Appl. No. 11/124,475, dated Dec. 18, 2007.
- Office Action for U.S. Appl. No. 11/124,475, dated Jul. 12, 2007.
- Office Action for U.S. Appl. No. 11/124,475, dated Jan. 19, 2007.
- Restriction Requirement for U.S. Appl. No. 11/124,475, dated Jul. 6, 2006.
- Office Action for U.S. Appl. No. 11/124,475, dated Jan. 31, 2006.
- Office Action for U.S. Appl. No. 12/381,776, dated Jul. 20, 2011.
- Restriction Requirement for U.S. Appl. No. 12/381,776, dated Feb. 19, 2010.
- Office Action for U.S. Appl. No. 12/381,776, dated Dec. 6, 2010.
- Office Action for U.S. Appl. No. 12/381,776, dated Jan. 3, 2012.
- Office Action for U.S. Appl. No. 12/381,776, dated Aug. 29, 2012.
- Office Action for U.S. Appl. No. 12/381,776, dated Jan. 17, 2013.
- Office Action for U.S. Appl. No. 12/381,776, dated Jun. 5, 2013.
- Advisory Action for U.S. Appl. No. 12/831,776, dated Oct. 8, 2014.
- Advisory Action for U.S. Appl. No. 12/831,776, dated Oct. 28, 2014.
- Office Action for U.S. Appl. No. 12/381,776, dated Dec. 3, 2013.
- Office Action for U.S. Appl. No. 12/381,776, dated Jul. 29, 2014.
- Notice of Allowance for U.S. Appl. No. 12/381,776, dated Dec. 9, 2014.

(56)

References Cited

OTHER PUBLICATIONS

- Notice of Allowance for U.S. Appl. No. 12/381,776, dated Apr. 28, 2015.
- U.S. Appl. No. 13/802,574, filed Mar. 13, 2013.
- Office Action for U.S. Appl. No. 13/802,574, dated Jun. 4, 2014.
- Office Action for U.S. Appl. No. 13/802,574, dated Oct. 31, 2014.
- Office Action for U.S. Appl. No. 13/802,574, dated Mar. 24, 2015.
- Notice of Allowance for U.S. Appl. No. 13/802,574, dated Jun. 23, 2015.
- Office Action for U.S. Appl. No. 14/875,844, dated Jun. 27, 2016.
- Office Action for U.S. Appl. No. 14/875,844, dated Jan. 3, 2017.
- Notice of Allowance for U.S. Appl. No. 14/875,844, dated Apr. 3, 2017.
- Notice of Allowance for U.S. Appl. No. 14/875,844, dated Jul. 17, 2017.
- Office Action for U.S. Appl. No. 15/700,498, dated Jul. 17, 2018.
- Office Action for U.S. Appl. No. 15/700,498, dated Jan. 4, 2019.
- Office Action for U.S. Appl. No. 15/700,498, dated Jul. 18, 2019.
- Notice of Allowance for U.S. Appl. No. 15/700,498, dated Nov. 1, 2019.
- Office Action for U.S. Appl. No. 15/700,498, dated Mar. 24, 2020.
- Office Action for U.S. Appl. No. 16/658,258, dated Jun. 30, 2020.
- Notice of Allowance for U.S. Appl. No. 16/658,258, dated Aug. 3, 2020.
- Office Action for U.S. Appl. No. 16/658,258, dated Nov. 13, 2020.
- Office Action for U.S. Appl. No. 16/896,357, dated Nov. 16, 2020.
- Office Action for U.S. Appl. No. 16/983,034, dated Sep. 24, 2020.
- Notice of Allowance for U.S. Appl. No. 16/983,034, dated Nov. 20, 2020.
- U.S. Appl. No. 12/150,203, filed Apr. 26, 2008.
- U.S. Appl. No. 12/150,126, filed Apr. 26, 2008.
- "352C22 Miniature Low Profile ICP Accelerometer," Precision Accelerometers, PCB Piezoelectronics Products—SVS Division, webpages, pp. 1-2 (downloaded Apr. 11, 2002: www.pcb.com/products/svs/svs352c22.html).
- "3G Mobile Internet Revolution, . . . only with Location Based Services!" pp. 1, (downloaded Aug. 10, 2002: <http://webhome.idirect.com/~dental/3glocator/home.htm>).
- "Airline Cargo Containers," Case Study, RJI Incorporated, webpages, pp. 1-2 (downloaded Mar. 16, 2002: www.rji.cc/casestudies/airlinecargocounters.html).
- "Airline Food Carts," Case Study, RJI Incorporated, webpages, pp. 1-2 (downloaded Mar. 16, 2002: www.rji.cc/casestudies/airlinefoodcarts.html).
- "An Introduction to SnapTrack Server-Aided GPS Technology," SnapTrack Inc., Apr. 3, 2007.
- Archived copy of a page entitled "Money-Back Guarantee Policy" from fedex.com, archived by the Internet Archive on Aug. 17, 2000.
- "Audiovox Intros GPS, Bluetooth Phone," INT Media Group, Inc. (allNetDevices), Apr. 5, 2002. (downloaded: www.allnetdevices.com/wireless/news/2001/1/15/audiovox_intros.html).
- Bahl et al. "RADAR: An In-Building RF-based User Location and Tracking System," *Proc. of the IEEE Conf. on Comp. Comm., INFOCOM2000, 19th Annual Joint Conf. of the IEEE Computer and Communications Societies*, Mar. 2000, 10 pgs.
- Benefon Esc! Owner's Manual, Publication No. YZ2400-4*, © Benefon Oyj, 2002, pp. 169.
- "Carrier and end-user applications for wireless location systems," TruePosition, Inc., http://www.trueposition.com/spie_app.htm, downloaded, Jul. 30, 2000, pp. 1-7.
- Capozza, P.T., et al. "A single-chip narrow-band frequency domain excisor for a Global Positioning System (GPS) receiver," *IEEE Journal of Solid-State Circuits*, vol. 35, Issue 3, Mar. 2000, pp. 401-411.
- "Danger—Products" and "Hiptop Communicator Brochure," Danger, Inc., downloaded Oct. 26, 2002: www.danger.com/products.php.
- "Developing a GPSs for the Global Supply Chain," Aberdeen Group, Inc., Executive White Paper, Jun. 2002.
- "Devices for Text Messages in Deutsche Telekom's fixed network have already found their way into many households," Deutsche Telekom AG, Press Release, Mar. 13, 2002, pp. 1-2.
- "Digital/Analog Compass Sensors" and "1655 Digital Compass Sensor," webpages, The Robson Company, Inc., pp. 1-2 (downloaded Apr. 11, 2002: www.dinsmoresensors.com/index.html).
- "EarthTrack™ Vehicle Tracking Systems," Outfitter Satellite, Inc., 1998 (downloaded Jan. 22, 2000).
- "Enhanced Tracking," United Parcel Service of America, Inc. (UPS), webpages, pp. 1-2 (downloaded Jun. 1, 2002: www.ups.com/myupsinfo/info/etrack?pnav=stdservice).
- "Fleet Management Systems—Asset Tracking Devices," Axiom Navigation Inc., 2000-2001 (downloaded Oct. 19, 2002: www.axiomnav.com/Prod_Systems/prod_system.asp).
- "Frozen Food Warehouse," Case Study, RJI Incorporated, webpages, pp. 1-3 (downloaded Mar. 16, 2002: www.rji.cc/casestudies/frozenfoodwarehouse.html).
- "FunMail Launches on the NTT DoCoMo i-mode network," FunMail, Press Release, May 1, 2001, pp. 1-2.
- Garmin, eTrex® Venture personal navigator™: Owner's Manual and Reference Guide, © 2001 Garmin, pp. 1-68.
- "Global Cell Phone Location," Axiom Navigation Inc., 2000-2001 (downloaded Oct. 19, 2002: www.axiomnav.com/Prod_Global/prod_global.asp).
- "Global Locating Services," SkyBitz, webpage, p. 1, (downloaded Nov. 15, 2002: www.skybitz.com/services/gls.html).
- "GLS Communicator," SkyBitz, webpages, pp. 1-2, (downloaded Nov. 15, 2002: www.skybitz.com/gls/communicator.html).
- "Guide to Tracking Info.," Nippon Express, website p., p. 1 (downloaded Jun. 9, 2002: www.nittsu.co.jp/edoc/howtoe.htm).
- Heinrichs et al. "Synergies in Handset Architecture," *GPS World*, Mar 2002, vol. 13, Issue 3, p. 30-39.
- Hightower et al. "Location Systems for Ubiquitous Computing," *Computer*, Aug. 2001, vol. 34, Issue 8, p. 57-66.
- "Introduction to SMS," by C. Tull of Anywhere YouGo.com, pp. 1-4 (downloaded: www.devx.com/wireless/articles/SMS/SMSintro.asp), Aug. 10, 2002.
- "IO Data Develops GPS Adapter for I-Mode Mobile," AsiaBizTech, Sep. 17, 2002, pp. 1-2.
- LaMance et al. "Assisted GPS," *GPS World*, Mar. 2002, vol. 13, Issue 3, p. 46-51.
- "Locate Networks: Our Service," Locate Networks, webpages, pp. 1-7 (downloaded Sep. 26, 2002: www.locatenetworks.com/).
- "MMS phones: Don't believe the hype," CNN.com/SCI-TECH, Aug. 8, 2002, pp. 1-3.
- "Mobile Location Based Services: Cell Tracking Devices of People & Things . . .," pp. 1-2, (downloaded Aug. 10, 2002: <http://3glocate.com>).
- "MoniTrack," Case Study, RJI Incorporated, webpages, pp. 1-2 (downloaded Mar. 16, 2002: www.rji.cc/technology/telematic.html).
- "My ups.com Benefits," United Parcel Service of America, Inc. (UPS), webpage, p. 1 (downloaded Apr. 13, 2002: www.ups.com/myupsinfo/info/benefits?pnav=stdservice).
- "NavMate® Navigation System," Visteon Corporation, webpage, pp. 1-2 (downloaded Jun. 21, 2002: www.visteon.com/technology/automotive/navmate.html).
- "News," SkyBitz, webpages, pp. 1-8, (downloaded Nov. 15, 2002: www.skybitz.com/about/news.html).
- "Pakhound: Your Watchdog in the Shipping Industry," website pages, pp. 1-3 (downloaded Jun. 9, 2002: www.pakhound.com/fact.asp).
- Palenchar, J. "E911 Update: What Major Carriers Have Planned," *TWICE: This Week in Consumer Electronics*, Oct. 8, 2001, vol. 16, Issue 23, p. 36.
- "Parkwatch and Wherenet Unveil the First Amusement Visitor Locating system," ParkWatch, Press Release, Jun. 27, 2000.
- "pulver.com's Location Based Services Report," pulver.com, Inc., Oct. 2001, pp. 1-17 (downloaded Jun. 4, 2002: www.pulver.com/lbsreport/lastbsreport.02/oct01.txt).
- "Radio Frequency Identification (RFID)," Case Study, RJI Incorporated, webpage, p. 1 (downloaded Mar. 16, 2002: www.rji.cc/technology/rfid.html).

(56)

References Cited

OTHER PUBLICATIONS

- "Real Time Location System (RTLS)," Case Study, RJI Incorporated, webpage, p. 1 (downloaded Mar. 16, 2002: www.rji.cc/technology/rtls.html).
- "Real-Time Warehouse Tracking," Case Study, RJI Incorporated, webpages, pp. 1-2 (downloaded Mar. 16, 2002: www.rji.cc/casestudies/rtwarehousetracking.html).
- "Savi Reusable Transport Container," Savi Technology, Inc., Apr. 30, 2002, pp. 1-2.
- "Send images to i-mode phones," Mobile Media Japan, 2001, pp. 1-3.
- "Ski Rental with Auto ID and Tracking," Case Study, RJI Incorporated, webpages, pp. 1-2 (downloaded Mar. 16, 2002: www.rji.cc/casestudies/skirentalcompany.html).
- "SnapTrack and SignalSoft Corp. Team Up to Trial Location-based Information Service for GSM Test Group," Press Release, SnapTrack Inc., Dec. 6, 1999.
- "SnapTrack Awarded Additional Key Patents for Enhanced GPS System," Press Release, SnapTrack Inc., Jan. 4, 2000.
- "Start-up crams single chip with phone, GPS and Bluetooth," CNET Network, Inc. (ZDNET), Mar. 22, 2002 (downloaded: <http://news.zdnet.co.uk/story/0,t284-x2107163,00.html>).
- "Status Icons/Messages," Yahoo! Messenger Help, Yahoo! Inc., 2002, pp. 1-2.
- Syrjarinne, J. "Keeping Time with Mobiles," *GPS World*, Jan. 2001, vol. 12, Issue 1, p. 22, 7pgs.
- "Technical Applications of Our Current Technology," Aetherwire, webpages, pp. 1-4 (downloaded Mar. 16, 2002: www.aetherwire.com/CDROM/General/appl1.html).
- "The Always on Network," Position Paper, Nortel Networks, 2002.
- "Theme Park Visitors & Cashless Purchasing," Case Study, RJI Incorporated, webpages, pp. 1-2 (downloaded Mar. 16, 2002: www.rji.cc/casestudies/themepark.html).
- "Track Shipments—Detailed Results," FedEx, webpages, pp. 1-2 (downloaded Oct. 29, 2002: www.fedex.com).
- "Track Your FedEx Shipments via Email," FedEx, webpages, pp. 1-2 (downloaded Oct. 29, 2002: www.fedex.com).
- "Tracking Helpful Tips," United Parcel Service of America, Inc. (UPS), webpages, pp. 1-2 (downloaded Jun. 1, 2002: www.ups.com/tracking/nm_help.html).
- "Trimble and Rosum Team to Develop Universal Positioning Technology," Trimble Navigation, Inc., News Release, Feb. 27, 2003.
- "Turning Position Into Knowledge," SkyBitz, webpage, p. 1, (downloaded Nov. 15, 2002: www.skybitz.com).
- "UPS Package Tracking," United Parcel Service of America, Inc. (UPS), webpages, pp. 1-2 (downloaded Apr. 13, 2002: www.ups.com/tracking/tracking.html).
- "UPS Wireless Solutions," United Parcel Service of America, Inc. (UPS), webpage, p. 1 (downloaded Apr. 13, 2002: www.ups.com/myupsinfo/info/wireless?pnav=stdsservice).
- Van Diggelen et al. "Indoor GPS," *GPS World*, Sep. 2001, vol. 12, Issue 9, p. 50, 5pgs.
- "Welcome to Iship, Inc.," iShip, Inc., webpages, pp. 1-2, (downloaded Jun. 9, 2002: www.iship.com/).
- "Welcome to Traker Systems," Traker Systems, webpages, pp. 1-2 (downloaded Jun. 9, 2002: www.trakersystems.com).
- "What are Instant Messages?" Yahoo! Messenger Help, Yahoo! Inc., 2002, pp. 1.
- "What is '3G' technology?," CNN.com/SCI-TECH, Oct. 22, 2001, pp. 1-3.
- "What is a Friend List?" Yahoo! Messenger Help, Yahoo! Inc., 2002, pp. 1.
- "Wherify Wireless and SiRF Team to Deliver Child Locator System," Wherify Wireless, Inc., Press Release, Mar. 19, 2001, pp. 1-2.
- "Wherify Wireless Breakthrough in Location-Based Services," *Mobilemag.com*, Feb. 28, 2001, p. 1.
- "Wherify Wireless GPS Locator for Kids User Guide," Wherify Wireless, Inc., 2003, pp. 1-106.
- "Wherify Wireless Location Services," Wherify Wireless, Inc., webpages, pp. 1-5 (downloaded: Mar. 25, 2003: www.wherifywireless.com/prod_watches.htm).
- "X-GPS™—Hybrid GPS Location Server Solution," Axiom Navigation Inc., 2000-2001 (downloaded Oct. 19, 2002: www.axiomnav.com/Prod_Global/x-gps.asp).
- "Yahoo! Messenger—Sending Messages to a Mobile Phone," Yahoo! Messenger, Yahoo! Inc., 2002, pp. 1-7 (downloaded Oct. 27, 2002: [http://messenger.yahoo.com/messenger/wireless/pc2sms/tour1.html\(through/tour7.html\)](http://messenger.yahoo.com/messenger/wireless/pc2sms/tour1.html(through/tour7.html))).
- "Yahoo! Messenger for Text Messaging," Yahoo! Messenger, Yahoo! Inc., 2002, pp. 1-10 (downloaded Oct. 27, 2002: [http://messenger.yahoo.com/messenger/wireless/smsmsg/tour1.html\(through/tour7.html\)](http://messenger.yahoo.com/messenger/wireless/smsmsg/tour1.html(through/tour7.html))).
- "Yahoo! Messenger for WAP," Yahoo Messenger, Yahoo! Inc., 2002 (tours 1-9), pp. 1-17 (downloaded Oct. 27, 2002: [www.messenger.yahoo.com/messenger/wireless/wap/tour1.html\(through/tour9.html\)](http://www.messenger.yahoo.com/messenger/wireless/wap/tour1.html(through/tour9.html))).
- Accelerometers—General Purpose, LP Series, Crossbow Technology, Inc., data sheet, pp. 1-3 (downloaded Apr. 11, 2002: www.xbow.com/Products/Accelerometers.htm).
- Bickers, "Eyes in the sky," SafeTzone Technology Corporation, webpages, 2001, pp. 1-3 (downloaded: www.safetzone.com/newsKiosk.asp).
- Chertkoff, Rachel, "Vehicle Locator Systems," Pager Technology, pp. 1-2, 1998.
- Commercial Uses for LoJack (webpage), LoJack Corporation, downloaded Jan. 22, 2000.
- Crossbow Product Guide—Accelerometers, Crossbow Technology, Inc., webpages, pp. 1-3 (downloaded Apr. 11, 2002: www.xbow.com/Products/Accelerometers.htm).
- Culler, D. et al., "MICA: The Commercialization of Microsensor Motes," *Sensors* (Apr. 1, 2002), pp. 1-5.
- Darabi et al., "A 2.4-GHz CMOS Transceiver for Bluetooth," *IEEE Journal of Solid-State Circuits*, vol. 36, No. 12 (Dec. 2001), pp. 2016-2024.
- Delphi and MobileAria Demonstrate True Hands Free In-Vehicle Mobile Productivity Services at CES, Press Release, Delphi Automotive Systems, Jan. 8, 2002 (downloaded Apr. 5, 2002: www.delphiauto.com/news/pressRelease/pr6828-01082002).
- F. Rivera, "Special Report: Keeping Tabs on Your Teen," 7 News, Boston, Apr. 30, 2002, pp. 1-3.
- FedEx Insight, FedEx, webpages, pp. 1-11 (downloaded Oct. 29, 2002: www.fedex.com).
- Fraden, J., *Handbook of Modern Sensors: Physics, Designs and Applications*, Second Edition, Springer-Verlag (1996), cover, pp. 310-354, 384-431, 458-493, and 513-528.
- GPS2000, Omega Research and Development, Inc., webpages, pp. 1-9 (pp. 7-9 pertain to an online tour) (downloaded Jul., 14, 2003: www.gps2000online.com/).
- Grimes, et al., "Wireless Magnetoelastic Resonance Sensors: A Critical Review," *Sensors*, vol. 2 (Jul. 23, 2002), pp. 294-313.
- Helfenstein et al., *Circuits and Systems for Wireless Communications*, Kluwer Academic Publishers (2000), cover pages, pp. 3-7, 9-34, and 37-47.
- Hill et al., "System Architecture Directions for Networked Sensors," *ACM/ASPILOS-IX* (Nov. 2000), 12 pages.
- IMVironment, Yahoo! Messenger Yahoo! Inc., 2002, pp. 1-12 (downloaded (including) Oct. 27, 2002: [http://help.yahoo.com/help/us/mesg/imv/imv-01.html\(through/index5.html\)](http://help.yahoo.com/help/us/mesg/imv/imv-01.html(through/index5.html))).
- J.Wrolstad, "Chrysler Claims First With Bluetooth Mobile Phone System," *Wireless Newsfactor*, Oct. 26, 2001.
- K. Hill, "Prada Uses Smart Tags to Personalize Shopping," *CRMDaily.com*, Apr. 24, 2002., pp. 1-4.
- Madou, Marc J., *Fundamentals of Microfabrication: the Science of Miniaturization*, Second Edition, CRC Press (2002) 139 pages.
- K. Miyake, "Sharp to unveil 3G PDA-type cell phone," *ITworld.com, Inc.*, Jan. 11, 2002.
- Kleinknecht, William, "Juvenile authorities want satellite tracking for felons," *The Star-Ledger of New Jersey*, Nov. 18, 1997.
- LoadTrak, pp. 1-2 (downloaded Jun. 4, 2002: www.load-trak.com).
- Mainwaring et al., "Wireless Sensor Networks for Habitat Monitoring," *ACM* (Sep. 28, 2002) pp. 88-97.

(56)

References Cited

OTHER PUBLICATIONS

Marek, "The Unstoppable SnapTrack," *Wireless Week*, Dec. 18, 2000.

Motorola Consumer Catalog: Pagers (webpage), Motorola, Inc., downloaded Jan. 19, 2000.

My.Roadway!, Roadway Express, Inc., webpages, pp. 1-2, (downloaded Jun. 9, 2002: www.quiktrak.roadway.com/cgi-bin/quiktrak).

Package, Dictionary.com, <http://dictionary.reference.com/browse/package> (last accessed Nov. 6, 2013), 3 pgs.

Packtrack™, PackTrack.com, webpages, pp. 1-2 (downloaded Jun. 9, 2002: www.packtrack.com).

Precision Accelerometers, PCB Piezoelectronics Products—SVS Division, webpages, pp. 1-2 (downloaded Apr. 11, 2002: www.pcb.com/products/svs/index.html).

Rabinowitz and Spilker, Jr., "A New Positioning System Using Television Synchronization Signals," Rosum Corporation, pp. 1-11 (downloaded May 21, 2003).

Rabinowitz and Spilker, Jr., "Positioning Using the ATSC Digital Television Signal," Rosum Corporation Whitepaper, Rosum Corporation (downloaded May 21, 2003).

Razavi, Behzad, *RF Microelectronics*, Prentice Hall (1998), cover pages, pp. 1-10, and 118-297.

Real Time Locating System, Executive Summary, Technology Systems International, Inc., 2007.

Rofougaran et al., "A Single-Chip 900-MHz Spread-Spectrum Wireless Transceiver in 1- μ m CMOS—Part II: Receiver Design," *IEEE Journal of Solid-State Circuits*, vol. 33, No. 4 (Apr. 1998), pp. 535-547.

Ryan, "Catching up with Dick Tracy," *San Francisco Chronicle*, news article, Mar. 18, 2002.

SandPiper GPS Receiver, Specification sheet by Axiom Navigation Inc. (www.axiomnav.com) 2006.

Senturia, Stephen D., *Microsystem Design*, Kluwer Academic Publishers (2001), cover pages, and pp. 3-14.

SiRF Debuts Revolutionary Architecture and Technologies to Further Drive GPS into the Mainstream, SiRF.com, Aug. 16, 1999 (archived Dec. 22, 1999), http://web.archive.org/web/19991222194810/http://www.sirf.com/as_prss2_3.htm, 4 pgs.

Smart Antenna, Specification sheet by Axiom Navigation Inc. (www.axiomnav.com) 2008.

SnapTrack—Privacy Protection (webpage), SnapTrack Inc., downloaded Jan. 19, 2000.

SnapTrack—Technology at Work (webpage), SnapTrack Inc., downloaded Jan. 19, 2000.

SnapTrack in Action (webpage), SnapTrack Inc., downloaded Jan. 19, 2000.

Steyaert et al., "A 2-V Cmos Cellular Transceiver Front-End," *IEEE Journal of Solid-State Circuits*, vol. 35, No. 12, Dec. 2000, pp. 1895-1907.

Stilp, Louis A., "Examining the Coming Revolution in Location Services," pp. 1-11.

Strom, Stephanie. "A Wild Sleigh Ride at Federal Express," *The New York Times*, Dec. 20, 1994.

Swift A2 GPS Receiver, Specification sheet by Axiom Navigation Inc. (www.axiomnav.com) 2010.

Swift B2 GPS Receiver, Specification sheet by Axiom Navigation Inc. (www.axiomnav.com) 2010.

TruePosition Virtual Brochure (webpage), TruePosition, Inc.

Wong, "Fishers, golfers join the rush to GPS," *San Jose Mercury News*, news article, Mar. 25, 2002.

Office Action for U.S. Appl. No. 16/896,357, dated May 4, 2021.

Notice of Allowance for U.S. Appl. No. 16/896,357, dated May 27, 2021.

* cited by examiner

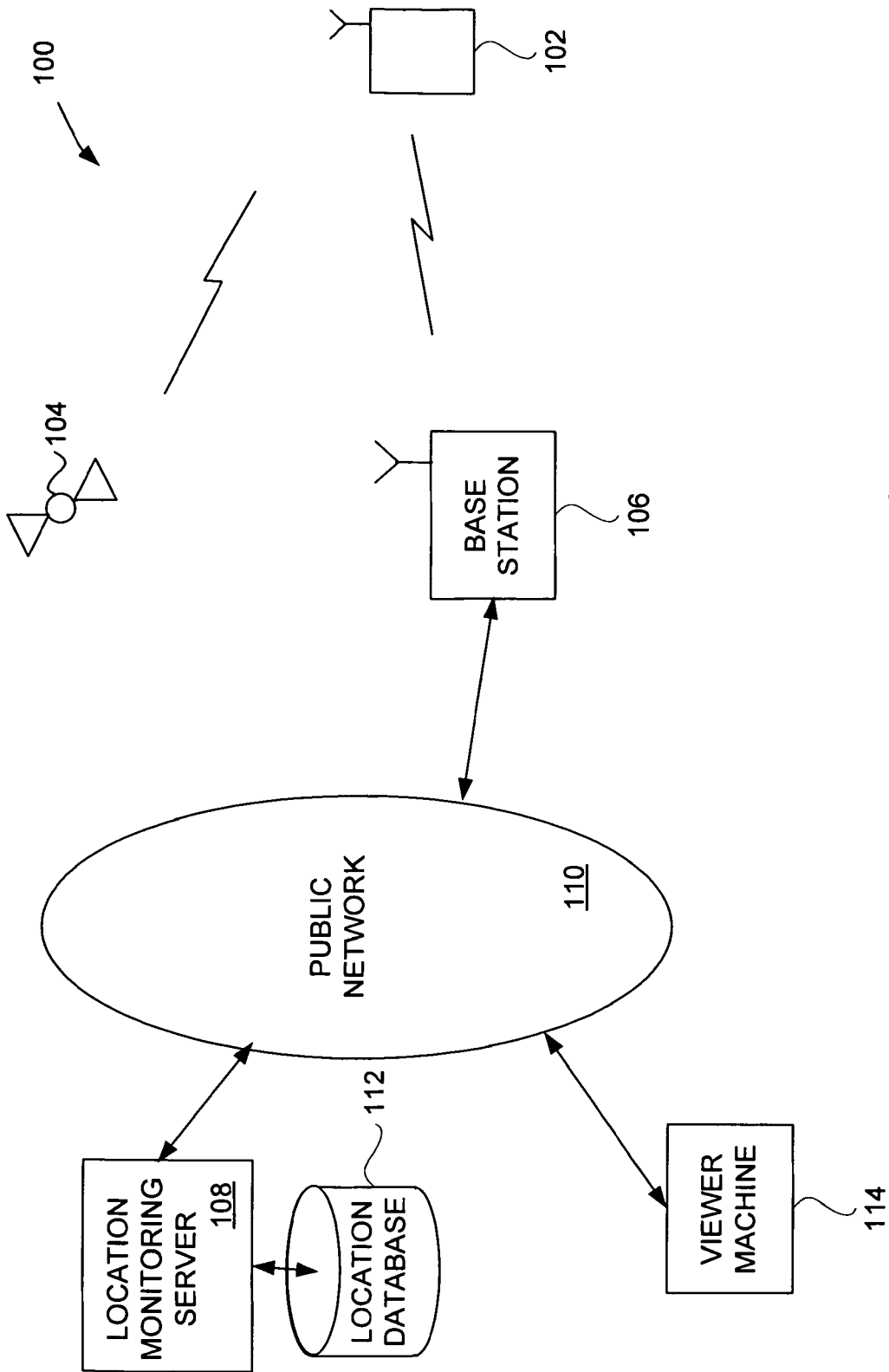


FIG. 1

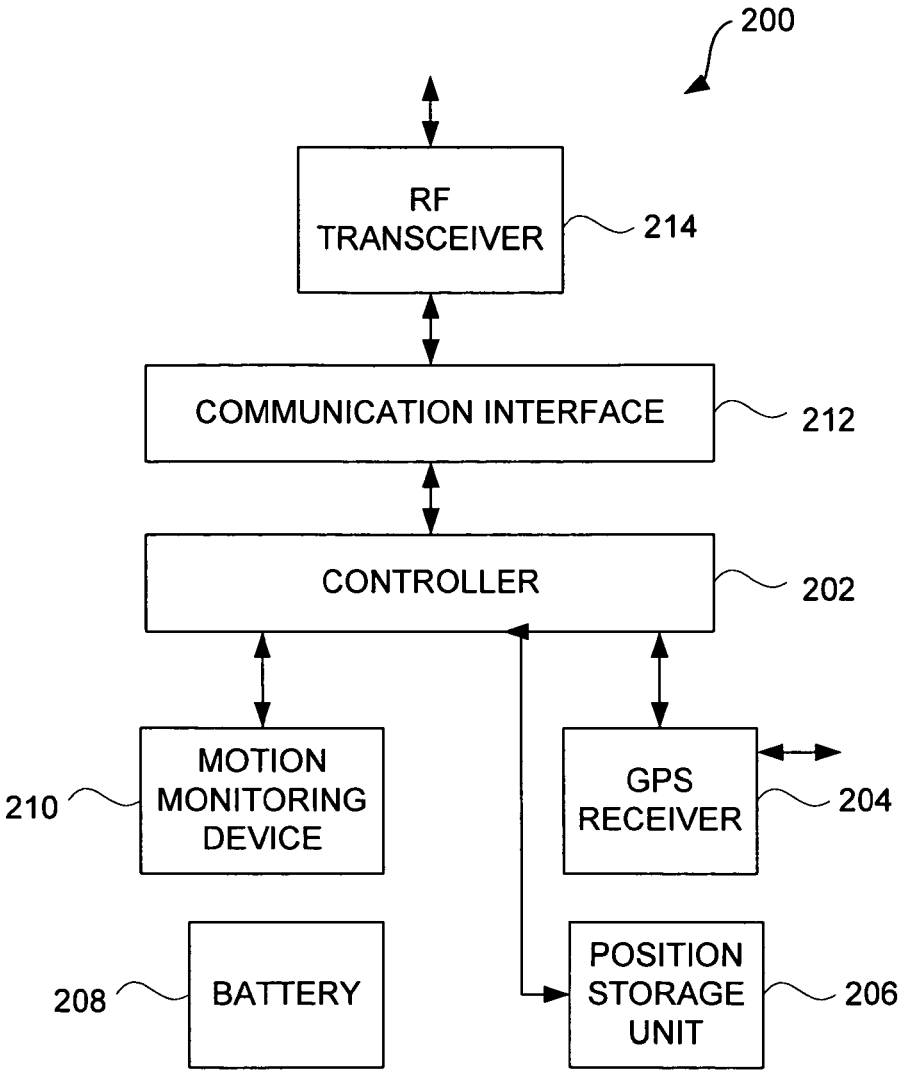


FIG. 2

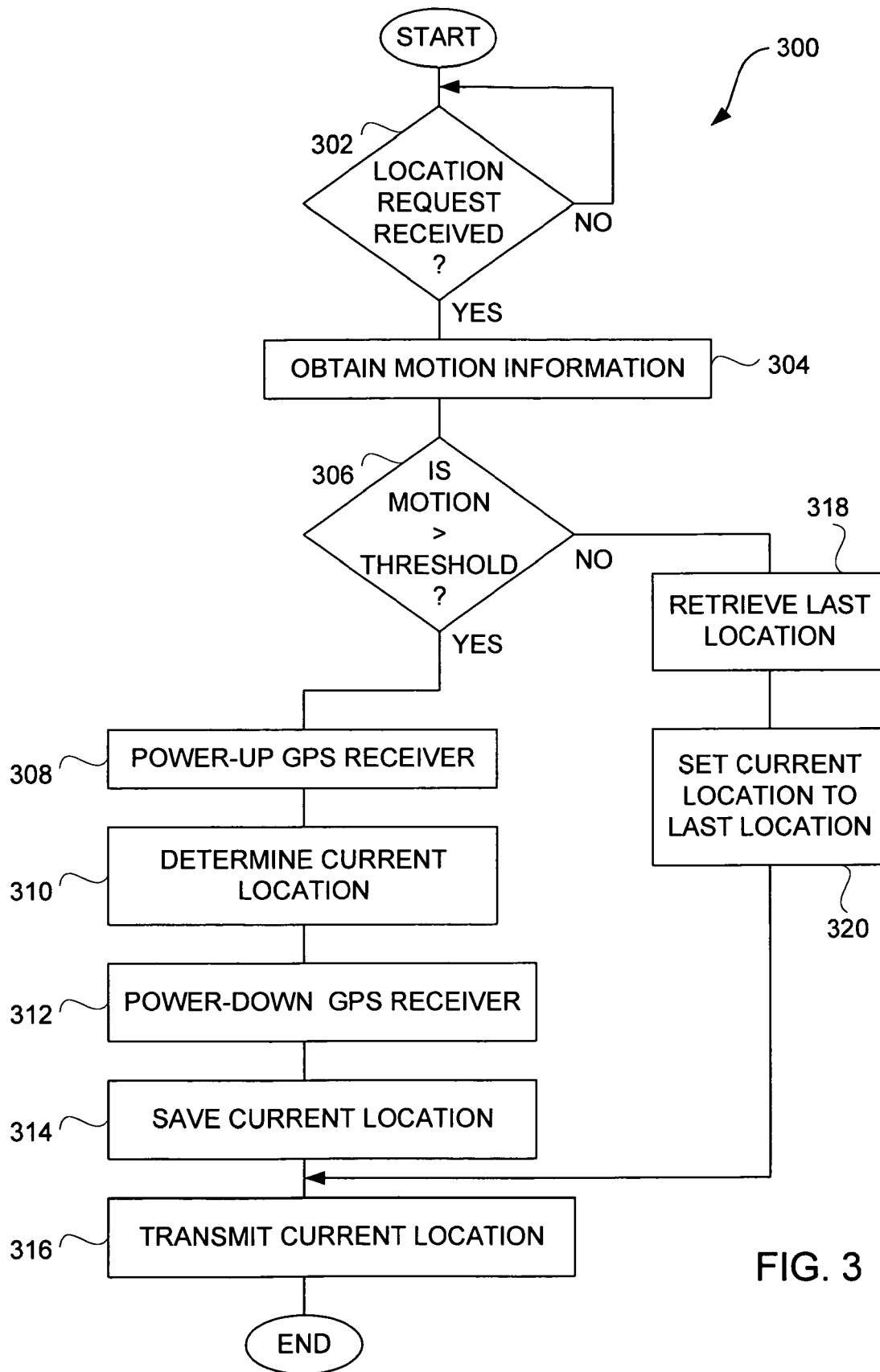


FIG. 3

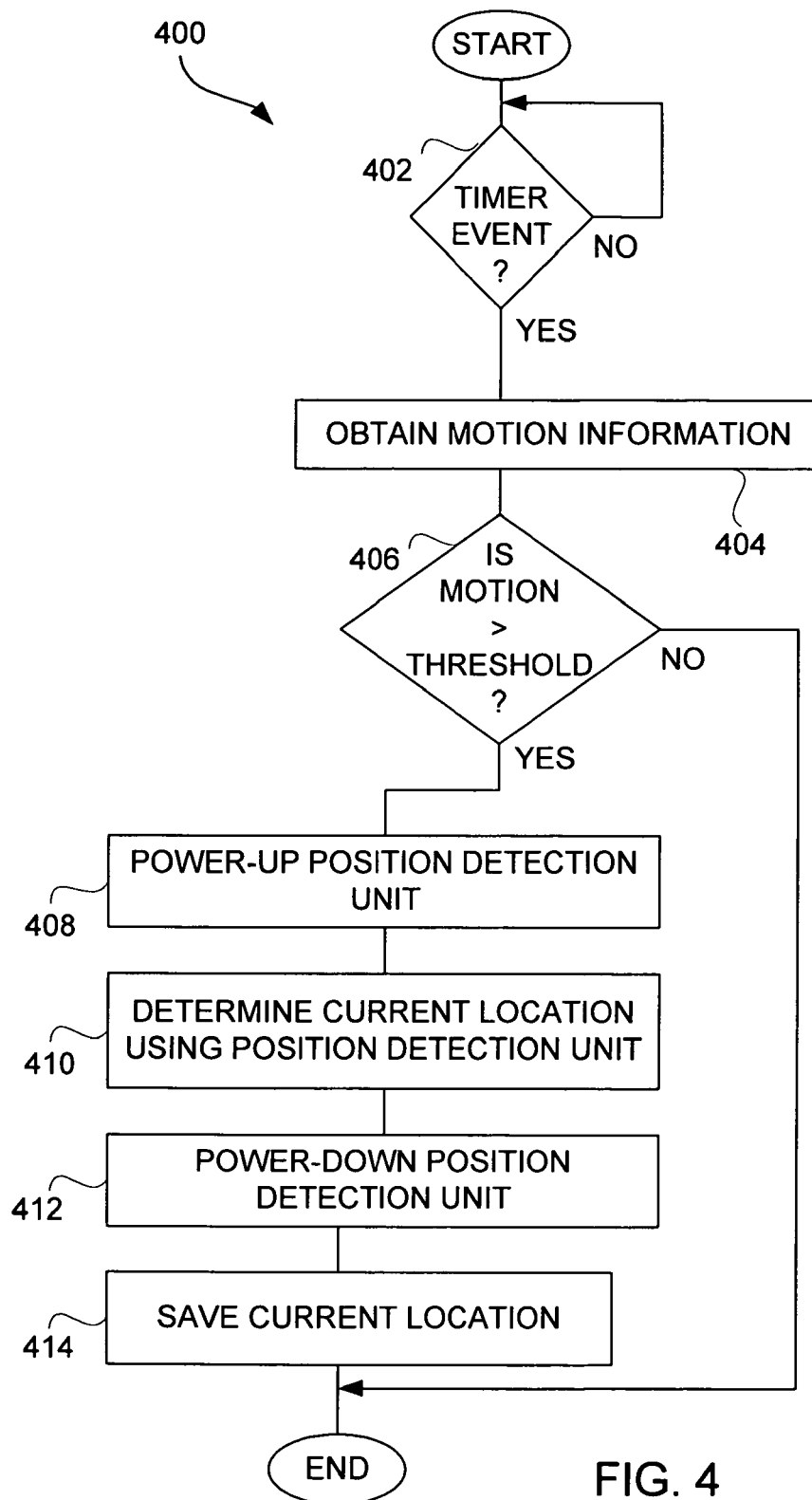


FIG. 4

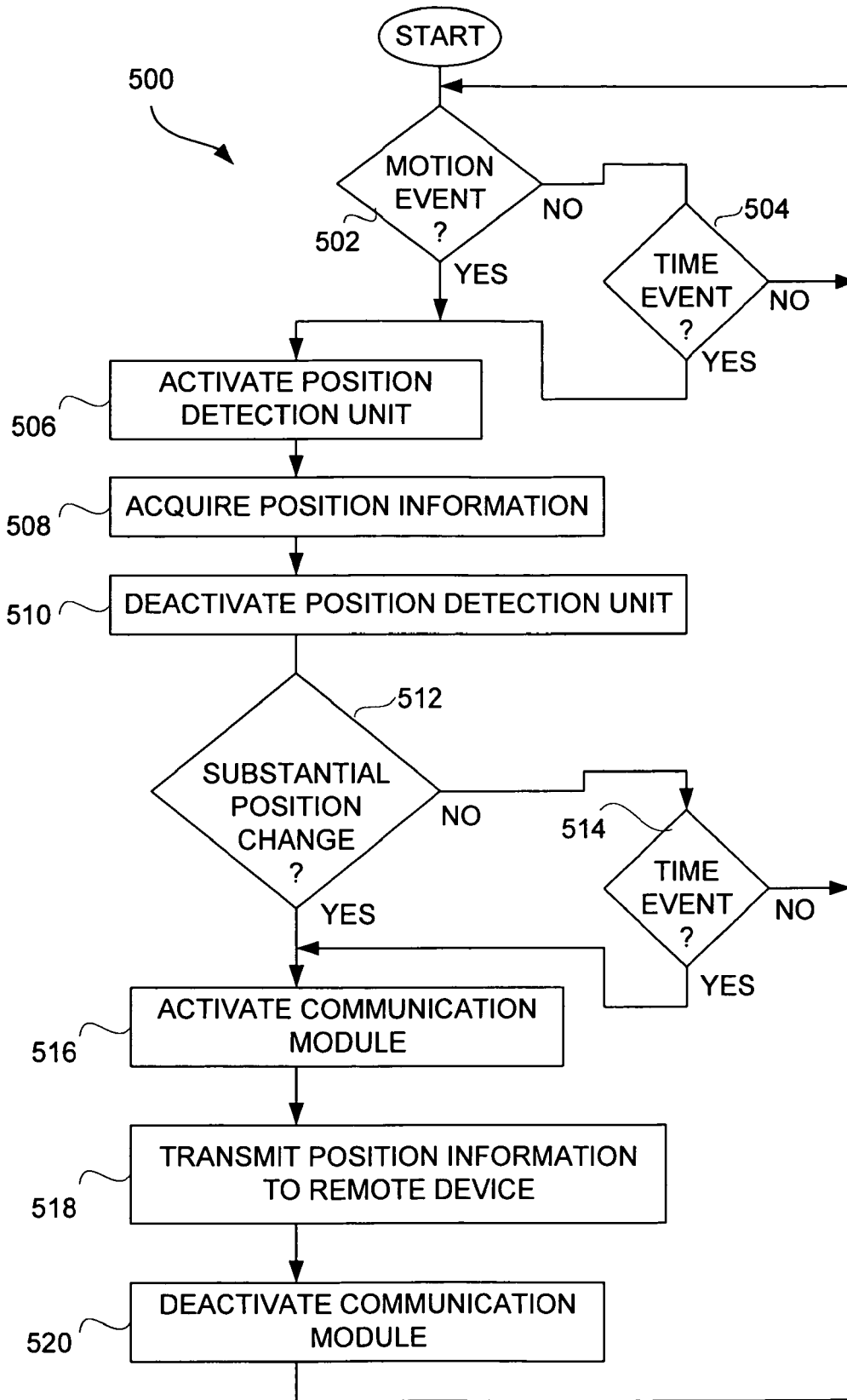


FIG. 5

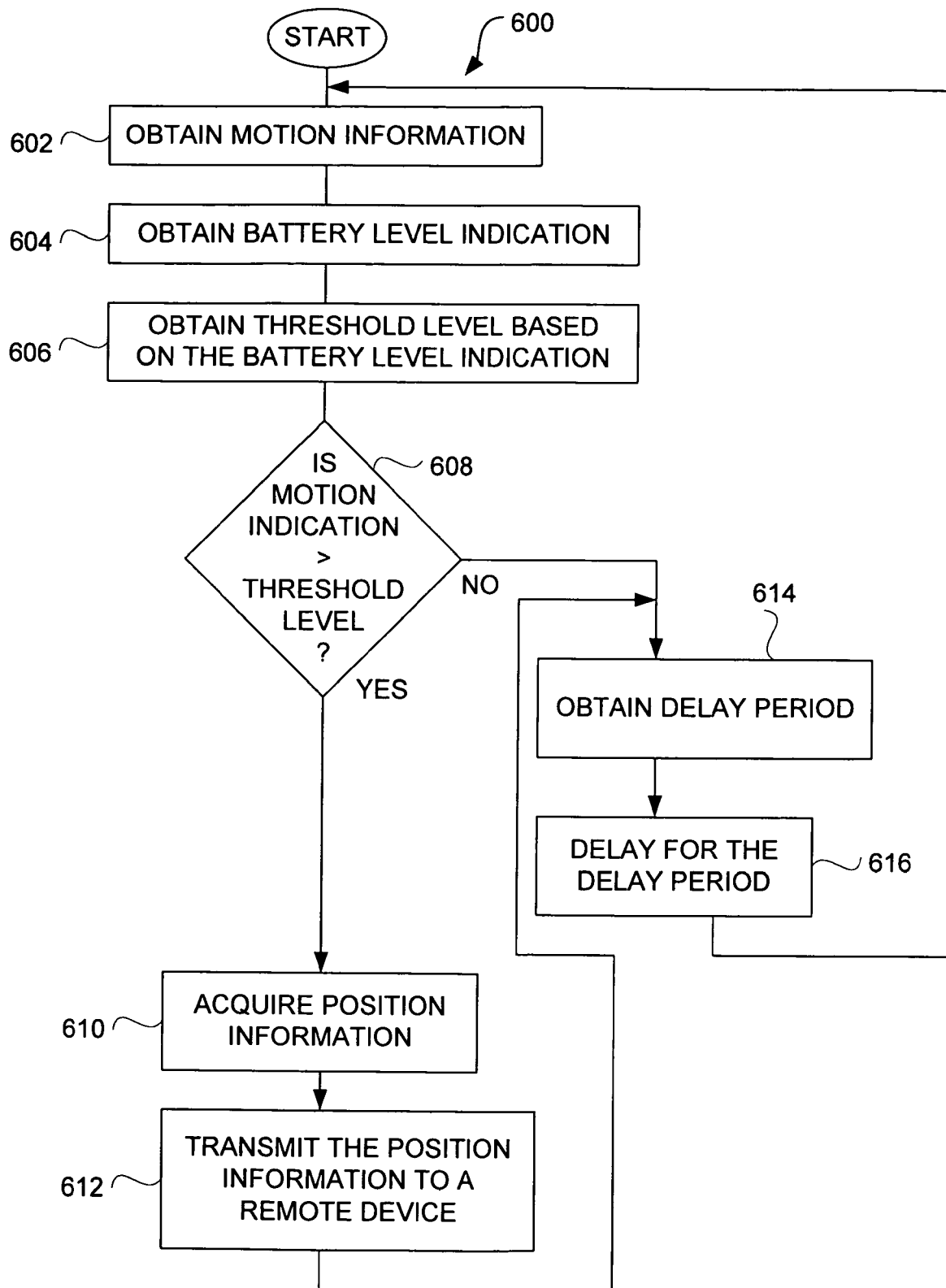


FIG. 6

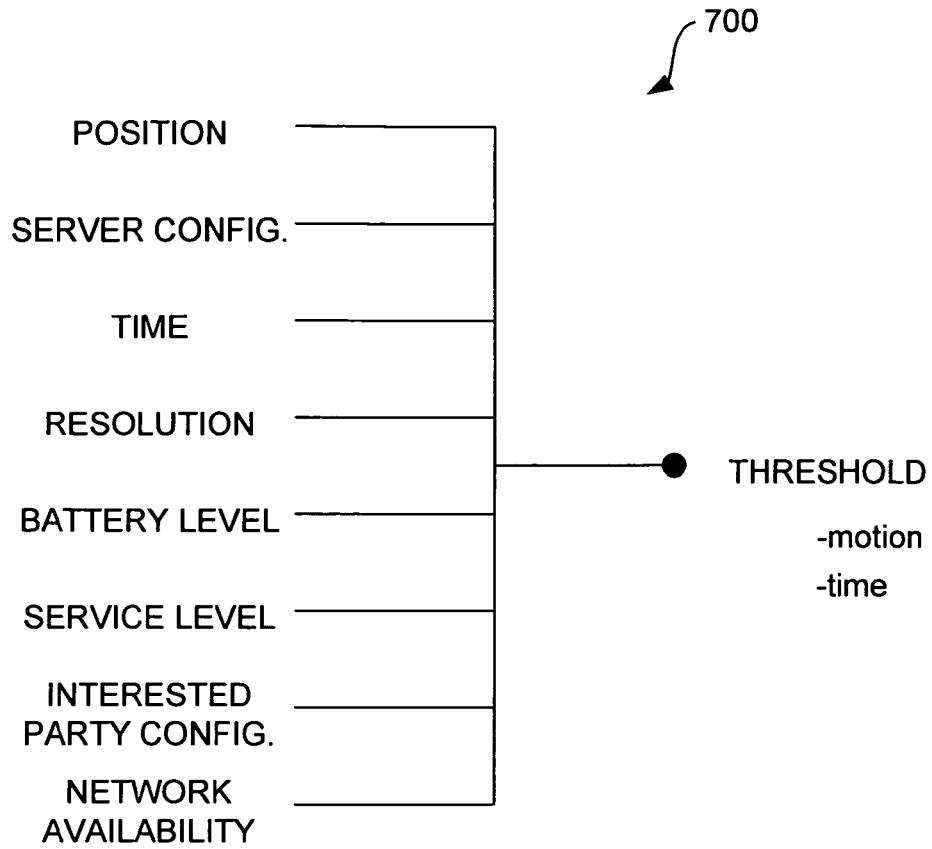


FIG. 7

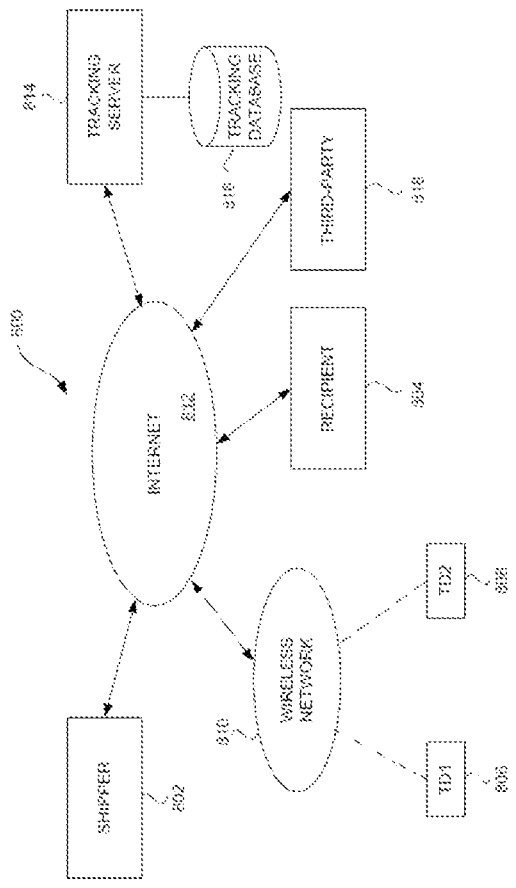


FIG. 8

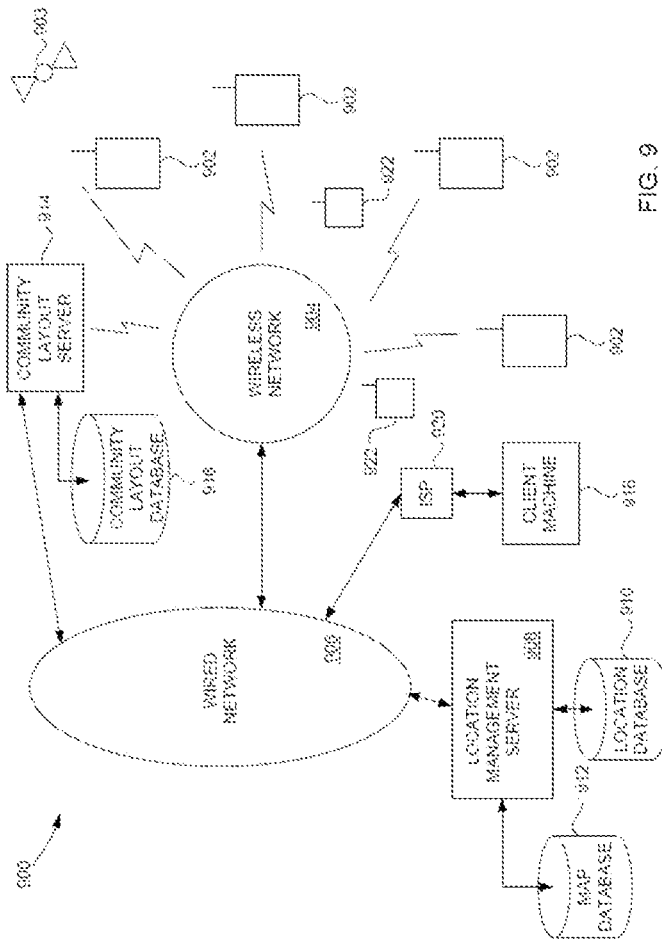


FIG. 9

**METHOD AND APPARATUS FOR
INTELLIGENT ACQUISITION OF POSITION
INFORMATION**

**CROSS REFERENCE TO RELATED
APPLICATIONS**

This application is a continuation of U.S. patent application Ser. No. 16/658,258, filed Oct. 21, 2019, and entitled, “METHOD AND APPARATUS FOR INTELLIGENT ACQUISITION OF POSITION INFORMATION,” which is hereby incorporated herein by reference in its entirety, which is a continuation of U.S. patent application Ser. No. 15/700,498, now U.S. Pat. No. 10,761,214, filed Sep. 11, 2017, and entitled, “METHOD AND APPARATUS FOR INTELLIGENT ACQUISITION OF POSITION INFORMATION,” which is hereby incorporated herein by reference in its entirety, which is a continuation of U.S. patent application Ser. No. 14/875,844, filed Oct. 6, 2015, now U.S. Pat. No. 9,759,817, and entitled, “METHOD AND APPARATUS FOR INTELLIGENT ACQUISITION OF POSITION INFORMATION,” which is hereby incorporated herein by reference in its entirety, which is a continuation of U.S. patent application Ser. No. 13/802,574, filed Mar. 13, 2013, now U.S. Pat. No. 9,182,238, and entitled, “METHOD AND APPARATUS FOR INTELLIGENT ACQUISITION OF POSITION INFORMATION,” which is hereby incorporated herein by reference in its entirety, which is a continuation of U.S. patent application Ser. No. 12/381,776, filed Mar. 17, 2009, now U.S. Pat. No. 9,074,903, and entitled “METHOD AND APPARATUS FOR INTELLIGENT ACQUISITION OF POSITION INFORMATION,” which is hereby incorporated herein by reference, which is a continuation of U.S. patent application Ser. No. 11/124,475, filed May 9, 2005, now U.S. Pat. No. 8,285,484, and entitled “METHOD AND APPARATUS FOR INTELLIGENT ACQUISITION OF POSITION INFORMATION,” which is hereby incorporated herein by reference, and which claims the benefit of the following provisional patent applications: (i) U.S. Provisional Patent Application No. 60/444,198, filed Jan. 30, 2003, and entitled “SYSTEM, METHOD AND APPARATUS FOR ACQUIRING, PRESENTING, MONITORING, DELIVERING, MANAGING AND USING STATUS INFORMATION,” which is hereby incorporated herein by reference; (ii) U.S. Provisional patent Application No. 60/418,491, filed Oct. 15, 2002, and entitled “SYSTEM, METHOD AND APPARATUS FOR ACQUIRING, PRESENTING, MONITORING, DELIVERING, MANAGING AND USING STATUS INFORMATION,” which is hereby incorporated herein by reference; (iii) U.S. Provisional Patent Application No. 60/404,645, filed Aug. 19, 2002, and entitled “SYSTEM, METHOD AND APPARATUS FOR ACQUIRING, PRESENTING, MONITORING, DELIVERING, MANAGING AND USING POSITION AND OTHER INFORMATION,” which is hereby incorporated herein by reference; and (iv) U.S. Provisional Patent Application No. 60/375,998, filed Apr. 24, 2002, and entitled “SYSTEM, METHOD AND APPARATUS FOR ACQUIRING, PRESENTING, MANAGING AND USING POSITION INFORMATION,” which is hereby incorporated herein by reference.

This application is also related to: (i) U.S. patent application Ser. No. 10/397,472, filed Mar. 26, 2003, and entitled “METHODS AND APPARATUS TO ANALYZE AND PRESENT LOCATION INFORMATION;” (ii) U.S. patent application Ser. No. 10/397,637, filed Mar. 26, 2003, and entitled “METHOD AND SYSTEM FOR PROVIDING SHIPMENT TRACKING AND NOTIFICATIONS;” (iii) U.S. patent application Ser. No. 10/397,641, filed Mar. 26, 2003, and entitled “METHOD AND SYSTEM FOR PERSONALIZED MEDICAL MONITORING AND NOTIFICATIONS THEREFOR;” (iv) U.S. patent application Ser. No. 10/397,640, filed Mar. 26, 2003, and entitled “INEXPENSIVE POSITION SENSING DEVICE;” (v) U.S. patent application Ser. No. 10/397,474, filed Mar. 26, 2003, and entitled “METHOD AND SYSTEM FOR ENHANCED MESSAGING;” (vi) U.S. patent application Ser. No. 10/397,512, filed Mar. 26, 2003, and entitled “APPLICATIONS OF STATUS INFORMATION FOR INVENTORY MANAGEMENT.

BACKGROUND OF THE INVENTION

1. Field of the Invention

The present invention relates to position detection and, more particularly, to improved techniques for acquisition of position information.

2. Description of the Related Art

Position determining devices have become popular for motor vehicle or vessel navigation. Typically, these devices utilize the global availability of Global Positioning Systems (GPS). These device can be dedicated to particular vehicles or vessels. More recently, these position determining devices (often known as GPS receivers) have become portable.

Unfortunately, these devices, if standalone, are battery operated and not typically designed to be able to monitor position over a long duration of time. More particularly, because these devices require frequent radio-frequency communications, computational processing and information display, they consume large amounts of power and thus their battery life is limited. Also, these devices remain relatively expensive and have a relatively large form factor.

As a result, conventional position determining devices are not suitable for use in many applications due to their power consumption. Thus, there is a need for position determining devices that have reduced power consumption. It would be further advantageous if position determining devices were smaller and less expensive.

SUMMARY OF THE INVENTION

Broadly speaking, the invention relates to improved methods and systems for position acquisition and/or monitoring. The position acquisition and/or monitoring can be performed with improved intelligence so that data acquisition, transmission and/or processing is reduced, which provides improved power efficiency.

According to one embodiment of the invention, a portable position acquisition apparatus can include one or more components that have a low-power state which can be used to reduce power consumption of the position acquisition apparatus. According to another aspect of the invention, the position acquisition can be performed dependent on one or more of motion information, at least one battery level characteristic of a battery, and a change in position. Accord-

ing to still another aspect of the invention, the acquired position information can be transmitted to a remote device (e.g., central server) dependent on one or more of motion information, at least one battery level characteristic of a battery, and a change in position. According to still yet another aspect of the invention, a portable, battery-powered position acquisition apparatus is used to acquire position information and a solar panel provides electrical charge to its battery.

The invention can be implemented in numerous ways including, a method, system, device, apparatus, and a computer readable medium. Several embodiments of the invention are discussed below.

Other aspects and advantages of the invention will become apparent from the following detailed description taken in conjunction with the accompanying drawings which illustrate, by way of example, the principles of the invention.

BRIEF DESCRIPTION OF THE DRAWINGS

The invention will be readily understood by the following detailed description in conjunction with the accompanying drawings, wherein like reference numerals designate like structural elements, and in which:

FIG. 1 is a block diagram of a location monitoring system according to one embodiment of the invention.

FIG. 2 illustrates a block diagram of a mobile device according to one embodiment of the invention.

FIG. 3 is a flow diagram of location request processing according to one embodiment of the invention.

FIG. 4 is a flow diagram of location monitoring processing according to one embodiment of the invention.

FIG. 5 is a flow diagram of power managed position monitoring according to one embodiment of the invention.

FIG. 6 is a flow diagram of power managed position monitoring according to another embodiment of the invention.

FIG. 7 illustrates an exemplary diagram of dynamic threshold dependency.

FIG. 8 is a block diagram of an article shipment notification system according to one embodiment of the invention.

FIG. 9 is a block diagram of an object tracking system according to one embodiment of the invention.

DETAILED DESCRIPTION OF THE INVENTION

The invention relates to improved methods and systems for position acquisition and/or monitoring. The position acquisition and/or monitoring can be performed with improved intelligence so that data acquisition, transmission and/or processing is reduced, which provides improved power efficiency.

According to one embodiment of the invention, a portable position acquisition apparatus can include one or more components that have a low-power state which can be used to reduce power consumption of the position acquisition apparatus. According to another aspect of the invention, the position acquisition can be performed dependent on one or more of motion information, at least one battery level characteristic of a battery, and a change in position. According to still yet another aspect of the invention, the acquired position information can be transmitted to a remote device (e.g., central server) dependent on one or more of motion information, at least one battery level characteristic of a battery, and a change in position. According to still yet

another aspect of the invention, a portable, battery-powered position acquisition apparatus is used to acquire position information and a solar panel provides electrical charge to its battery.

In the following description, numerous specific details are set forth in order to provide a thorough understanding of the present invention. However, it will become obvious to those skilled in the art that the invention may be practiced without these specific details. The description and representation herein are the common meanings used by those experienced or skilled in the art to most effectively convey the substance of their work to others skilled in the art. In other instances, well-known methods, procedures, components, and circuitry have not been described in detail to avoid unnecessarily obscuring aspects of the present invention.

Reference herein to “one embodiment” or “an embodiment” means that a particular feature, structure, or characteristic described in connection with the embodiment can be included in at least one embodiment of the invention. The appearances of the phrase “in one embodiment” in various places in the specification are not necessarily all referring to the same embodiment, nor are separate or alternative embodiments mutually exclusive of other embodiments. Further, the order of blocks in process flowcharts or diagrams representing one or more embodiments of the invention do not inherently indicate any particular order nor imply any limitations in the invention.

Embodiments of the invention are discussed below with reference to FIGS. 1-9. However, those skilled in the art will readily appreciate that the detailed description given herein with respect to these figures is for explanatory purposes as the invention extends beyond these limited embodiments.

FIG. 1 is a block diagram of a location monitoring system 100 according to one embodiment of the invention. The location monitoring system 100 operates to monitor the location of mobile devices using a Global Positioning System (GPS). The location monitoring system 100 includes one or more mobile devices 102. The mobile devices 102 can receive position information from a GPS satellite 104. The mobile devices 102 also communicate through a wireless link to a base station 106. The base station 106 in turn can couple to a location monitoring server 108 through a public network 110. As an example, the public network 110 can include the Internet, a wide area network (WAN), or a local area network (LAN). The location monitoring server 108 typically couples to a location database 112 which serves to store location information for the mobile devices 102.

The location monitoring system 100 also permits a viewer machine 114 to interact with the location monitoring server 108 through the public network 110. In this regard, a user of the viewer machine 114 is able to interact with the location monitoring server 108 to retrieve the location (or position) information for one or more of the mobile devices 102 using the location data stored in the location database 112. Typically, such location information that is retrieved from the location database 112 is forwarded from the location monitoring server 108 through the public network 110 to the viewer machine 114 where it can be reviewed by the user of the viewer machine 114. As one example, the viewer machine 114 can be a computer, such as a personal computer. Note that the term viewer machine 114 is used in a general sense. In other words, the process of accessing location information at the viewer machine 114 is not limited to visual viewing by way of a screen display. For example, a user can review (receive) such information through audio means (e.g., voice).

5

Since the mobile devices **102** are mobile in nature, and thus battery powered, the tracking of the location of the mobile devices **102** can impose a power consumption difficulty for the mobile devices **102**. Each time one of the mobile devices **102** captures and forwards its location to the location monitoring server **108**, electronic charge from its battery is consumed for such location monitoring purposes. Hence, although the location monitoring system **100** desires to monitor the location of the mobile devices **102** on a frequent basis (e.g., at all times, limited times, periodically, on-demand), the mobile devices **102** themselves should not be unduly burdened with respect to power consumption for such purposes. According to one aspect of the invention, the mobile devices **102** operate to conserve power consumption while still permitting consistent location monitoring.

The mobile devices **102** are typically hand-held devices that operate under battery control. The mobile devices **102** incorporate location detection circuitry but can also include other circuitry to support other functions associated with the mobile devices **102**. For example, the mobile devices **102** can further operate as cameras, cellular phones, portable digital assistants (PDAs), or portable computers.

FIG. 2 illustrates a block diagram of a mobile device **200** according to one embodiment of the invention. The mobile device **200** is, for example, suitable for use as the mobile device **102** illustrated in FIG. 1.

The mobile device **200** includes a controller **202** that controls the overall operation of the mobile device. The mobile device **200** provides at least location acquisition circuitry but may also include voice communication circuitry and/or data communication circuitry. Voice communication circuitry is typically found in mobile devices that operate as mobile telephones. The data communications are typically provided by mobile devices that operate to permit wireless data transfer to and from the mobile device. As shown in FIG. 2, the mobile device **200** includes circuitry for monitoring its location (or position). Although not shown in FIG. 2, additional circuitry, such as for voice or data communication or data processing, can be provided within the mobile device **200**.

In one embodiment, the location acquisition circuitry of the mobile device **200** includes a GPS receiver **204**. The GPS receiver **204** is utilized to receive GPS signals that are sent by a GPS satellite (such as the GPS satellite **104** illustrated in FIG. 1). The GPS receiver **204** can be controlled by the controller **202** to determine when a mobile device **200** should be receiving GPS information. When the GPS receiver **204** receives the GPS information (e.g., signals received to determine pseudo ranges) from the GPS satellite, the GPS information is typically processed by the controller **202** to produce location information. The location information is then stored by the controller **202** to a position storage unit **206**. The position storage unit **206** can be a data storage device (e.g., RAM or ROM). As examples, the data storage device can be a register, semiconductor data storage, optical data storage, or magnetic data storage. It should be noted that the GPS receiver **204** can, more generally, be considered a position detection unit.

The mobile device **200** is powered by a battery **208** that is typically rechargeable. A motion monitoring unit **210** is also provided in the mobile device **200**. The motion monitoring unit **210** couples to the controller **202** to provide motion information to the controller **202**. The motion information is able to be determined based on one or a plurality of criteria that are monitored at the mobile device via the motion monitoring unit **210**. Examples of such criteria include: acceleration, vibration, force, speed, and direction.

6

The motion monitoring unit **210** can be formed or constructed in a number of ways. In one embodiment, the motion monitoring unit **210** uses a micro-machined structure to sense motion. Accelerometers are known in the art and suitable for use as the motion monitoring unit **210**. See, e.g., Dinsmore sensors available from Robson Company, Inc. of Erie, Pa. Various other types of sensors besides accelerometers can be additionally or alternatively used in sensing the criteria (e.g., vibration, force, speed, and direction) used in determining motion. For particularly low power designs, the one or more sensors used can be largely mechanical.

In one embodiment, by reducing the frequency at which the GPS receiver **204** is required to request, receive and resolve GPS information, the mobile device **200** is able to save power and thus extend the useful life of the battery **208**. Further, the reduction in use of the GPS receiver **204** also operates to reduce the demands on wireless network bandwidth in transmitting and managing such location information.

In another embodiment, the motion monitoring unit **210** enables the GPS receiver **204** to remain in a low-power state (such as a sleep state) until an updated location for the mobile device **200** is needed. In other words, the motion monitoring unit **210** can monitor the motion of the mobile device **200** such that if only minimal motion of the mobile device **200** has been detected since the last location of the mobile device **200** was obtained utilizing the GPS receiver **204**, then the controller **202** can assume (e.g., estimate) that the location of the mobile device **200** is substantially the same and thus need not wake-up (i.e., transition to normal power state) the GPS receiver **204** to acquire and process new GPS information. As a result, the GPS receiver **204** can remain in its low-power state and the controller **202** need not perform computations to resolve the GPS information to location information.

The mobile device **200** also includes a communication interface **212** and a RF transceiver **214**. The communication interface **212** and the RF transceiver **214** enable the mobile device **200** to communicate with a central station, such as the base station **106** illustrated in FIG. 1. Hence, the mobile device **200** is able to wirelessly communicate with the base station **106** to provide location information to the base station **106**, which then forwards the location information to the location monitoring server **108** for storage.

In general, the motion monitoring unit **210** serves to provide motion information to the controller **202**. The motion information can be merely a control signal from the motion monitoring unit **210**, or more complicated signals or data (e.g., position). Processing of the motion information can be performed at the controller **202**, though processing could have additionally or alternatively have been performed at the motion monitoring unit **210**. In any case, in one embodiment, the motion information can be used by the controller **202** to determine the degree of motion. For example, the controller **202** can measure the relative motion of the mobile device **200**, such as with respect to a previous position. As another example, the motion monitoring unit **210** and/or the controller **202** can accumulate the motion of the mobile device **200** with respect to a specific previous position or status.

In one embodiment, the motion monitoring unit **210** or the controller **202** can use more than one type of criteria to identify the motion of the mobile device **200**. For example, both the acceleration and speed information across a duration of time can be used to determine the distance the mobile device **200** has traveled. In yet another example, the distance the mobile device **200** has traveled can incorporate direction

information. Just to illustrate, assume the mobile device **200** has traveled north at a constant speed for 10 meters and then changes 180 degrees and traveled south at the same speed for 10 meters. The mobile device **200** can sense different types of motion, e.g., speed and change of direction. The motion monitoring unit **210** and/or the controller **202** can perform calculations to determine whether the mobile device **200** has any net movement.

FIG. 3 is a flow diagram of location request processing **300** according to one embodiment of the invention. The location request processing **300** is, for example, performed by a mobile device, such as the mobile device **102** illustrated in FIG. 1 or the mobile device **200** illustrated in FIG. 2.

The location request processing **300** begins with a decision **302** that determines whether a location request has been received from a requestor. When the decision **302** determines that a location request has not yet been received, the location request processing **302** awaits such a request. When the decision **302** determines that a location request has been received, then motion information for the mobile device is obtained **304**. For example, the motion information can be obtained from the motion monitoring unit **210** illustrated in FIG. 2. The motion information can, for example, pertain to an accumulation of motion during a time period or can pertain to a maximum motion during a time period. Motion refers to one or a combination of physical conditions on a mobile device, such as acceleration, velocity, force, vibration, etc.

Next, a decision **306** determines whether the motion is greater than a threshold amount. When the decision **306** determines that the motion is greater than a threshold amount, then the GPS receiver of the mobile device is powered-up **308**. A current location for the mobile device is then determined **310** using the GPS receiver. Typically, the GPS receiver will obtain GPS information and a controller (or processor) will process the GPS information to produce a current location (or position). After the current location has been determined **310**, the GPS receiver can be powered-down **312**. Here, the GPS receiver is returned to a low-power state so as to conserve power. As an example, the low-power state (or powered-down state) can be a sleep mode or it can be a disabled mode. The current location is then saved **314**. As an example, the current location can be saved **314** to a local storage unit, such as the position storage unit **206** illustrated in FIG. 2. The current location can be transmitted **316** to an appropriate destination. Typically, the current location would be transmitted to a location monitoring server (e.g., location monitoring server **108**), and then transmitted as a data communication to the requestor, if the requestor is a remote requestor.

The current location could be transmitted separately or as a group or a batch of locations. For example, the mobile device could store the current locations and the time for such locations in the position storage unit and then transmit a group of such locations to the location monitoring server (e.g., location monitoring server **108**) when needed, when convenient or when the position storage unit is nearly full. Here, the position storage unit is able to provide buffering of the locations. Alternatively or additionally, the current location could be sent to the requestor's device. Further, the current location could also be sent in a background mode if the mobile device supports other communications, for example, Short Message Service (SMS) messaging or voice communications.

On the other hand, when the decision **306** determines that the motion is not greater than the threshold, then the last location for the mobile device is retrieved **318**. Typically, the

last location would be retrieved from the local storage unit, such as the position storage unit **206** illustrated in FIG. 2. The current location for the mobile device is then set **320** to the last location. In other words, the current location is set to be the same as the previous location for the mobile device. Thereafter, the operation **316** can be performed to transmit the current location to the location monitoring server and/or the requestor.

Additionally, if desired, the use of a prior location or last location as the current location could be further restricted such that a location could time-out. For example, if it has been more than some time duration (e.g. 24 hours) since a last location was obtained using the GPS receiver, such location could be deemed "stale". Then the request processing **300** could activate the GPS receiver and determine a current location with operations **308-316** even though the motion for the mobile device has not exceeded the threshold.

FIG. 4 is a flow diagram of location monitoring processing **400** according to one embodiment of the invention. The location monitoring processing **400** begins with a decision **402** that determines whether a timer has expired. When the decision **402** determines that the timer has not yet expired, then the location monitoring processing **400** awaits such an event. In other words, the location monitor processing **400** is invoked on a periodic basis to check the location for a mobile device. Alternatively, the location monitor processing **400** could be invoked on an event basis other than time, such as a motion event, though this embodiment is discussed with reference to a timer event.

When the decision **402** determines that a timer event has occurred, then motion information is obtained **404**. The motion information can be accumulated during an interval or merely a maximum motion indication during an interval, or some other motion criteria. A decision **406** then determines whether the motion is greater than a threshold. When the decision **406** determines that the motion is greater than the threshold, the GPS receiver is powered-up **408**. Then, the current location is determined **410** using the GPS receiver. After the current location has been determined **410**, the GPS receiver is powered-down **412**. The current location is saved **414**. Alternatively, when the decision **406** determines that the motion is not greater than the threshold, then the operations **408-414** are bypassed such that the motion information is utilized to avoid having to again determine a location when the amount of movement has been insufficient to cause a substantial change in location. In which case, power consumption by the GPS receiver and the processing of location information is able to be substantially reduced such that battery life is prolonged. After the operation **414**, or its being bypassed, the location monitor processing **400** is complete and ends.

It should be noted that the determination of the current location at operation **410** could utilize simply GPS information received from the GPS receiver, or need not fully resolve the location of the mobile device (e.g., pseudo ranges) or some partially processed variant therefrom.

The location monitor processing **400** is suitable for around-the-clock type monitoring of the location of a mobile device. The motion criteria and the low power maintenance of the GPS receiver allow the mobile device to significantly reduce its power consumption while still providing constant location monitoring. The location monitor processing **400** is also suitable for use in having the mobile device "push" its location when it has changed (even though not being requested by a requestor). For example, the mobile device could "push" its location when a threshold condition is exceeded.

Additional power management approaches can be utilized in conjunction or in combination with those for the use of the GPS receiver. Still further, in addition to utilizing a low-power state for the GPS receiver and the use of motion information, other techniques can be utilized. For example, with respect to FIG. 4, if periodically polled, the polling frequency can be decreased if the battery charge is deemed low. For example, if the battery for the mobile device has gotten rather low, it needs recharged. However, since the battery is already low, the polling frequency could be decreased such that the lifetime of the battery can be extended in the event that the battery is not recharged promptly. In one embodiment, the duration of a timer can be extended to decrease the pooling frequency. Likewise, the threshold level could be varied depending on battery level. Further, the amount of processing performed with respect to the GPS information received from the GPS receiver and/or its resolution can be minimally processed at the mobile device to save power. Also, in the event that the location information needs to be further processed, such processing could be performed at a centralized or remote site such as the location monitoring server. Also, as noted above, the sending of the location data can be done more efficiently, such as in groups or batches, or in a background mode. Still further, the polling frequency could be increased to gather more location information if the motion information indicates that the mobile device is undergoing a high degree of motion.

FIG. 5 is a flow diagram of power managed position monitoring 500 according to one embodiment of the invention. The power managed position monitoring 500 can, for example, be performed by the mobile device 200 shown in FIG. 2, which can be used as a position monitoring apparatus.

The power managed position monitoring 500 begins with a decision 502 that determines whether a motion event has occurred. When the decision 502 determines that a motion event has not occurred, a decision 504 determines whether a time event has occurred. When the decision 504 determines that a time event has not occurred, then the power managed position monitoring 500 returns to repeat the decision 502 and subsequent operations. In other words, the power managed position monitoring 500 is effectively invoked when a motion event has occurred or a time event has occurred. In one implementation, the time event can be set to a lengthy delay such as 24 hours so that a time event occurs every 24 hours which guarantees that one position will be obtained on a 24 hour basis regardless of motion. In one implementation, the motion event is triggered based on a threshold level. The threshold level can be dynamically changed or selected based on various conditions.

When the decision 502 determines that a motion event has occurred or when the decision 504 determines that a time event has occurred, the positioning detection unit of the position monitoring apparatus is activated 506. Then, using a position detection unit, position information is acquired 508. Thereafter, the position detection unit is deactivated 510. Here, in order to conserve power, the position detection unit remains inactive, which can pertain to powered-off, disabled, sleep, hibernate, or other low power mode. It is only when position information is to be acquired that the position detection unit is activated.

Next, a decision 512 determines whether a substantial position change has occurred. Here, the position information that has been acquired 508 is compared to a prior position information that was previously acquired. When the difference in position indicates that there has been no substantial position change, then a decision 514 determines whether a

time event has occurred. Here, the time event can provide a fail safe such that a position is obtained once during the period provided by the time event regardless of change in position. Here, the time event can be the same time event or a different time event than that used with the decision 504. When the decision 514 determines that a time event has not occurred, then the power managed position monitoring 500 returns to repeat the decision 502 and subsequent operations.

On the other hand, when the decision 512 determines that a substantial position change has occurred or when the decision 514 determines that a time event has occurred, then additional processing is carried out to transmit the position information to a remote device. More particularly, a communication module of the position monitoring apparatus is activated 516. Then, the position information is transmitted 518 to a remote device. Typically, the remote device provides centralized storage and processing for position information pertaining to a plurality of position monitoring apparatuses. After the position information has been transmitted 518, the communication module is deactivated 520. Here, in order to conserve power, the communication module remains inactive, which can pertain to powered-off, disabled, sleep, hibernate, or other low power mode. It is only when position information is to be transmitted (or received) from a remote device that the communication module is activated. Following the operation 520, the power managed position monitoring 500 returns to repeat the decision 502 and subsequent operations so that subsequent motion events and time events can be similarly processed.

The power managed position monitoring 500 indicates that the position detection unit and the communication module of the position monitoring apparatus can be maintained in a low-power state until such circuitry is needed. This results in a substantial savings in power consumption by the position monitoring apparatus. Further, the position monitoring apparatus is thus suitable for long term, constant (e.g., 24/7) position monitoring. Additionally, should the position monitoring apparatus include a controller, the controller can also be set to a low-power state when position information is not being acquired or transmitted. In such a low-power state, the controller might still be able to monitor for motion events and time events and might also be capable of monitoring, or even waking itself up, when a request from a remote device is received.

FIG. 6 is a flow diagram of power managed position monitoring 600 according to another embodiment of the invention. The power managed position monitoring 600 is, for example, performed by the position monitoring apparatus 200 shown in FIG. 2.

The power managed position monitoring 600 obtains 602 a motion indication. The motion indication pertains to motion that the position monitoring apparatus has undergone. For example, the motion indication might indicate a maximum motion that has occurred during a time period or since last evaluated, or an accumulation of motion that has occurred during the time period or since last evaluated. The motion indication might pertain to acceleration, velocity, vibration and the like. In addition, a battery level indication is obtained 604. The battery level indication might, for example, pertain to or depend on a charge level of the battery or a voltage level of the battery. Next, a threshold level is obtained 606 based on at least the battery level indication. Here, the threshold level to be utilized is variable depending upon at least the battery level indication.

A decision 608 determines whether the motion indication is greater than the threshold level. When the decision 608 determines that the motion indication is greater than the

threshold level, the position information is acquired **610**. The position information pertains to the position monitoring apparatus. Then, the position information is transmitted **612** to a remote device. Typically, the remote device provides centralized storage and processing for position information

5 pertaining to a plurality of position monitoring apparatuses. Following the operation **612**, as well as following the decision **608** when the motion indication does not exceed the threshold level, a delayed period is obtained **614**. The delay period can be static or dynamic. In other words, the delay period can be fixed or the delay period can vary depending upon other considerations. In one implementation, the delay period can be varied depending upon the battery level indication. For example, if the battery level indication indicates that the battery charge is low, the delay period can be increased so as to prolong the ability of the position monitoring apparatus to monitor its position. Once the delay period is obtained **614**, the power managed position monitoring **600** delays **616** for the delay period. During the delay period the various components, modules, units or circuitry of the position monitoring apparatus can be placed in a low power state so as to preserve power during the delay period. After the delay period, the power managed position monitoring **600** returns to repeat the operation **602** and subsequent operations so that additional position information can be acquired and transmitted as appropriate.

In this embodiment, the threshold level is based on at least the battery level indication. As the battery level indication indicates that the charge of the battery is low, the threshold level for the motion indication comparison can be increased so that position information is acquired and transmitted less frequently, thereby conserving power of the battery that has limited available charge.

Although the power managed position monitoring **600** is capable of altering the threshold level based on the battery level indication as well as capable of altering the delay period based on the battery level indication or other considerations, it should be understood that, more generally, that position monitoring can be power managed using one or both of threshold level adjustment and delay period adjustment. For example, the power managed position monitoring **600** could use a static threshold level (e.g., static with respect to battery level) and alter the delay period based on the battery level indication.

FIG. 7 illustrates an exemplary diagram of dynamic threshold dependency **700**. The dynamic threshold dependency pertains to a threshold utilized by the position monitoring apparatus. For example, the threshold can be a degree of motion or an amount of time. For example, the degree of motion can pertain to a motion threshold utilized in the decision **608** of the power managed position monitoring **600** shown in FIG. 6, and the amount of time can pertain to a time threshold utilized by the operation **614** of the power managed position monitoring **600** shown in FIG. 6. As another example, the degree of motion can be used with the motion event at the decision **502** of the power managed position monitoring **500** shown in FIG. 5, and the time events at the decisions **504** and **514** of the power managed position monitoring **500** shown in FIG. 5.

In any case, the thresholds can vary or depend upon one or more various considerations. These considerations include, as illustrated in FIG. 7, one or a combination of position, server configuration, time, resolution, battery level, service level, interested party configuration, and network availability.

The threshold can vary depending upon the position of the position monitoring apparatus. Consequently, position infor-

mation could be acquired more often in some positions and less often in other positions. For example, a certain part of town where the layout is quite complicated, with many closely-spaced one-way streets, might require more frequent acquisition of position information. However, a rural area may lead to less frequent acquisition of position information.

The server configuration can pertain to that configuration of a remote device (e.g., remote server) that provides centralized storage and management of position information of many position monitoring apparatuses. Here, the server configuration can control the one or more thresholds utilized so that the position information is obtained in accordance with the server configuration. Although the applications can vary, one example is that a server may want to set limits on position acquisition or transmission of remote devices.

The thresholds can also vary with time. For example, during peak use periods of the remote device, the thresholds can be higher so that less position information is acquired. This can be because during peak use periods, the bandwidth becomes limited. Also, power consumption is typically higher during peak use. This can be done by increasing the thresholds during peak time to discourage usage. In contrast, during non-peak use periods, the thresholds can be set lower. From a different perspective, the peak use can refer to the peak use of the position monitoring apparatus. Then, during certain period of time, if a user desires more frequent position information, then the thresholds can be lower during those periods so that more position information is acquired.

A resolution for the position information can be set by a remote user through the remote server and/or can be set directly on the position monitoring apparatus. For example, the position monitoring apparatus can permit a user to set a resolution, such as low, medium or high resolution. Depending upon the type of resolution being selected, the thresholds can vary so that the desired resolution can be achieved.

The battery level can affect the thresholds as noted above.

Thresholds can be changed according to the type of subscriptions or service charges. For example, the system providing the capabilities of the location monitoring services may provide different service levels for the users of the system. In which case, the different service levels can signal different threshold levels. This allows those users that have agreed to utilize more expensive service levels to obtain improved, high end or better resolution position information.

Interested parties can interact with the remote device or server through a web interface. As such, interested parties can themselves request configuration or monitoring capabilities through the web interface. The interested party can change configurations to affect the threshold levels.

Still further, network availability can affect the threshold levels. For example, when network availability is low, the threshold levels can be increased. On the other hand, when network availability is high, the threshold levels could be decreased.

The invention also relates to improved approaches for monitoring status of articles being shipped. The monitoring can produce notifications to interested parties. The notifications typically contain status information pertaining to the articles being shipped. Alternatively, interested parties can gain access to status information pertaining to the articles being shipped via a website. According to one embodiment, the status information includes at least position (location) information and shipping conditions information.

FIG. 8 is a block diagram of an article shipment notification system **800** according to one embodiment of the

invention. The article shipment notification system **800** provides web-based article shipment management capable of not only tracking the shipment of articles but also providing notifications to users of the system.

The article shipment notification system **800** includes a shipper **802** and a recipient **804**. Typically, the article shipment notification system **800** would support multiple shippers and multiple recipients. However, in the embodiment shown in FIG. **8**, only the shipper **802** and the recipient **804** are illustrated. It is assumed that an article is being shipped by the shipper **802** to the recipient **804**. A shipper is a person, entity or associated computing device that is responsible for or associated with shipping an article, and a recipient is a person, entity or associated computing device to which the article is being shipped.

In order to track the location and shipping conditions of the article being shipped from the shipper **802** to the recipient **804**, a tracking device (TD1) **806** is provided within or attached to the article being shipped. Additionally, a second tracking device (TD2) **808** is also illustrated in FIG. **8** which could be used to track another article. The first tracking device **806** and the second tracking device **808** are coupled to a wireless network **810**. In general, the article shipment notification system **800** supports many different tracking devices. Typically, for each article being tracked, the article shipment notification system **800** would use a separate tracking device.

The wireless network **810** is coupled to the Internet **812**. Further, a tracking server **814** is coupled to the Internet **812**. The tracking server **814** also couples to a tracking database **816**. The Internet **812** can be replaced by other data networks (e.g., enterprise network, regional network, Local Area Network, or Wide Area Network).

While an article is being shipped from the shipper **802** to the recipient **804**, the first tracking device **806** gathers status information associated with the article. The status information includes at least position (location) information and/or shipping conditions information. The position information is obtained typically from a global positioning system (GPS) receiver within the first tracking device **806**. The position information can be obtained or augmented by a local positioning system such as utilized with a local network (e.g., Bluetooth, Wi-Fi, etc.). The shipping conditions information pertains to conditions of or surrounding an article during its shipment. The shipping conditions information can vary with application. Examples of shipping conditions that can be provided within shipping conditions information include one or more of vibration, acceleration, speed, or direction of travel of, or force or pressure on, the article. Other examples of shipping conditions that can be provided within shipping conditions information include one or more of temperature, humidity, pressure, gaseous or liquid states, chemical compositions, wind speed, color composition, scent, light, sound, smoke, particle or radiation (e.g., infrared radiation).

The status information that is obtained by the first tracking device **806** is sent by the first tracking device **806** to the tracking server **814** via the wireless network **810** and the Internet **812**. The tracking server **814** stores the status information pertaining to the first tracking device **806** into the tracking database **816** such that it is associated with the particular article being shipped. The tracking server **814** tracks the shipment of various articles, and thus stores status information pertaining to the particular articles being shipped.

As the article is being shipped, the tracking server **814** can also monitor the status information associated with the first tracking device **806** (as well as other tracking devices used

with the article shipment notification system **800**). The tracking server **814** can produce and send various notifications to shippers and/or recipients of articles being shipped using the article shipment notification system **800**. More particularly, the tracking server **814** can monitor the status information provided by the first tracking device **806** and determine whether and when to send notifications to either the shipper **802** or the recipient **804**, or both.

In one embodiment, the shipper **802** and/or the recipient **804** can provide notification criteria to the tracking server **814**. The shipper **802** and the recipient **804** are coupled to the Internet **812** and thus can supply notification criteria to the tracking server **814** (as well as receive notifications from the tracking server **814**). The notification criteria can specify the channel, timing and nature of the notifications to be received. The notification messages can be transmitted through different channels, such as electronic mail, text message (e.g., page, instant message, etc.), voice call, and facsimile. The timing, for example, can be periodic (e.g., daily) or on events or conditions. The nature of the notification messages can vary based on circumstances and/or user preferences. For example, the user might only desire urgent messages and not messages of lesser priorities. As another example, the user might want to receive messages in an abbreviated format as opposed to a detailed format. As still another example, the user might want to receive warning messages or messages indicating that corrective action is suggested, but opt not to receive regular status messages. In one embodiment, the notification criteria can also be considered user configuration data.

The article shipment notification system **800** can allow the shipper **802** and the recipient **804** to interact with the tracking server **814** through a web interface so that such users are able to configure or set-up to receive certain notifications. The web interface can facilitate a user in arranging to receive notifications by indicating notification criteria. For example, through use of the web interface, a user can make user selections to indicate the notifications to be received and where and by what channels the notifications are to be provided.

The article shipment notification system **800** can provide various different notifications to interested users, such as the shipper **802** and the recipient **804**. For example, the shipper **802** might receive a notification that the article shipment has been delayed, a notification that the article has been delivered (arrived at the destination), a notification that shipping conditions violations have occurred, or a notification of the position of the article. For example, the recipient **804** might receive notifications such as a notification that an article has been shipped identifying the recipient as the person or entity receiving the article, a notification that an article being shipped to the recipient is nearby, and a notification that an article will be delivered to the recipient shortly (optionally including an estimated delivery time), a notification of shipping conditions violations, or a notification of the position of the article.

The article shipment notification system **800** can also include at least one third-party **818**. The third-party **818** is a user interested in the shipment of the article other than the shipper **802** or the recipient **804**. The article shipment notification system **800** can operate (or be configured to operate) to provide certain notifications to the third-party **818**. The above-mentioned web interface can be used to configure or set-up such notifications. As examples, the third-party **818** can represent a shipping entity, an insurance company, a management organization, a financial organization, etc.

In one embodiment, the notifications can have different levels. The level of a notification can depend on security clearance, authorization, ranks within companies, or the recipient. For example, a notification directed to an insurance company might contain all available status information. In another example, a notification directed to a recipient of the article might only contain selected types/portions of status information (e.g., time of arrival but not humidity information).

The notification can be initiated by a server, such as the tracking server **804**, or on-demand by a requestor (e.g., interested user).

The invention is suitable for asset management, such as tracking location/position of assets and monitoring conditions of assets. Assets can, for example, include: packages, purchased goods, moving boxes/creates, and pallets.

The position resolution can be enhanced through use of a community layout and/or profile information.

FIG. **9** is a block diagram of an object tracking system **900** according to one embodiment of the invention. The object tracking system **900** can be used to track various objects including packages, humans, pets and the like. The object tracking system **900** includes a plurality of wireless devices **902**. These wireless devices **902** are provided with or proximate to objects being tracked by the object tracking system **900**. These mobile devices **902** have GPS receivers that can receive GPS position information from a GPS system **903**. The acquisition of such position information can be performed on demand, periodically or on need. The mobile devices **902** communicate over wireless links with a wireless network **904**. The wireless network **904** then couples to a wired network **906**. A location management server **908** is coupled to the wireless network **906**. The location management server **908** provides centralized storage of the location information for each of the mobile devices **902** in a location database **910**. A map database **912** is also coupled to the location management server **908**. The map database **912** can directly connect to the location management server **908** or can reside elsewhere on the wired network **906**. The location management server **908** can interact with the map database **912** to convert position information provided by the GPS information into map coordinates, street addresses, etc.

In addition, the object tracking system **900** also includes a community layout server **914**. The community layout server **914** can be coupled to the wired network **906** or the wireless network **904**. In one embodiment, a community can be associated with a commercial building, a shopping mall, a residential community and the like. The community layout server **914** interacts with a community layout database **916** to resolve locations, such as street addresses and cross streets, into more intelligible locations in a community. For example, instead of a street address, the locations can pertain to points of interest with respect to the community. As an illustration, in the case of a commercial building, with five floors, the community layout database **916** would convert the GPS information (plus any additional sensor information relevant to making the determination also provided by the mobile device **902**, such as altitude and direction) to obtain a community location or point of interest. For example, using the GPS position information together with other sensor information, the community layout server **914** can interact with the community layout database **916** to precisely locate a particular mobile device **902** to a particular point of interest. In the case of the commercial building with five floors, the mobile device **902** can be pinpointed to the third floor which pertains to the corporation Acme, Inc. The point

of interest or community position can then be sent from the community layout server **914** through the wired network **906** to the location management server **908** which then in turn stores the community position or point of interest in the location database **910** as the position of the particular mobile device **902**.

Once the location database **910** has the positions of the mobile devices **902**, when subsequent position data is sent to the location management server **908**, these positions are suitably updated in the location database **910**. Additionally, other of the mobile devices **902** or a representative client machine **918** coupled through an Internet Service Provider (ISP) **920** to the wired network **906** can be permitted to access the locations of one or more of the mobile devices **902**. Assuming that the requesting party is allowed access to said position information, the request for such information is processed by the location management server **908**. When permission is granted, the locations desired are retrieved from the location database **910** and returned to either the requesting mobile devices **902** or the requesting client machine **918**. In a similar manner, access to other non-location information (i.e., additional sensor information or conditions information) pertaining to the mobile devices **902** can be available.

In one embodiment, the client machine **918** or a particular one of the mobile devices **902** can set up a private or semi-private web page that is hosted by a server (e.g., the location management server **908** or other server) on the wired network **906**. Then, the page can be customized to monitor the location of a number of the mobile devices **902**. Hence, thereafter, the requestor need only access the customized web page to obtain the current position information for such mobile devices. With such an embodiment, a web page could be provided to track a plurality of packages being transported from a warehouse to a customer. In another embodiment, a similar web page can be setup to allow a parent to track the position of mobile devices that are affixed to his children such that the parent can easily monitor the position of his children. In this example, the object tracked is a living being (e.g., person).

The object tracking system **900** could also be augmented by wireless profile devices **922**. These profile devices **922** can wirelessly couple to the mobile devices **902** using the wireless network **904**. The profile devices **922** could be short range transmitters or transceivers. The profile devices **922** could store one or more profiles for a particular location in which they reside.

Hence, the mobile device **902** can wirelessly communicate with the profile device **922**, if available, to acquire a profile pertaining to its location. For example, with the profile device **922** placed in the office building of Acme, Inc., when the mobile device **902** is in such office building, the mobile device **902** can acquire the profile from the proximate profile device **922**. The profile can include the business name, its location, contact information for the business, etc. Thereafter, some or all of the profile information can be stored in the mobile device **902** and/or forwarded to the location management server **908** or other server for storage. Hence, the location provided by the profile may be more exacting and descriptive than the GPS position, such that the location of the mobile device **902** can be better determined.

In some cases it may be useful to control or limit the wireless communications with respect to the profile devices **922** so that the mobile devices **902** do not inadvertently receive the wrong profile. Various techniques can be utilized to provide control over the wireless communications. For

example, the profile device 922 may or may not use a directional antenna. As another example, the profile device 922 could also control (e.g., limit) its transmission power.

In one embodiment of package tracking and monitoring, a GPS-enabled mobile device is attached to a package. As the package travels, the mobile device periodically sends its position information wirelessly to a center. This can be done, for example, through a cellular connection. The center keeps track of the package's location, and can post its path on a Web site. A user might have to pay to access the location information. For example, at 3 am in the morning, the user can log into the site, and enter a password to find out that the package is on the 9th floor of the Empire State Building (e.g., its destination), or more particularly the package is at the office of Acme, Inc. on the 9th floor of the Empire State Building.

In one embodiment, in addition to position information, other identifying information can also be automatically included based on radio frequency identification (RFID) tags. The RFID tags typically include memory chips equipped and radio antennas. They can be attached to objects (or people) to transmit data about the objects. Typically, the memory chips do not include tremendous amount of information. They may only have 2 kilobytes of data, sufficient to encode, such as a serial number, where and when the product was manufactured, and other relevant information. These tags can come in a number of configurations. For example, an active tag uses a battery-powered transponder to emit a constant signal carrying the identifying information programmed into the chip. Active tags are more applicable to situations where readers are not close to the tags. A semi-passive tag likewise has a battery, but may not be activated until it receives a signal from a reader. They are more applicable to situations that do not need continuous tracking. A passive tag has no battery; its antenna extracts power from the reader's radio wave signal to transmit the identifying information on the chip. Passive tags are typically relatively inexpensive, but may have to be within a few feet of a reader to extract power. The tags can provide identifying information to the corresponding positioning information, which may also include temporal information. Together, the location and identification of assets can be automatically tracked.

In still another embodiment, personalized asset management or object tracking can be provided. For example, a user can track a package or object being shipped at her convenience. Such tracking can be achieved independent of a shipping entity that ships the package. A representative scenario is as follows. A user acquires a location-aware (e.g., GPS-aware) mobile communication device, such as a limited-functionality mobile telephone or 2-way pager, and places the mobile communication device in or on the package or object. The user makes note of the identifier for the mobile communication device. Then, periodically or on-demand, the user can determine the precise location of her package. In one implementation, the user (or a server on the user's behalf) sends a message to the mobile communication object. The message can be a voice or text message, or other form of data, that simply requests the mobile communication device to get its present location. The mobile communication device then determines its location. The mobile communication device can determine its location, for example, by directly using a GPS receiver or indirectly via another device in its immediate vicinity having GPS awareness. Further, battery lifetime can be conserved using the intelligent GPS information acquisition approaches noted in U.S. Provisional Patent Application No. 60/375,998. The

mobile communication device then replies back (e.g., through voice or text message) to the user (or server) to inform of its present location. The user can, for example, call or page the mobile communication device and get the reply message. Alternatively, the user need only access the server to access the location data it holds for the package or object associated with the mobile communication device. The server can also automatically track these mobile communication device and alert the users when problems or delays in its transport are identified. Further, alerts or message could notify a recipient or sender of an object or package when the same is determined to be in-route, arrived at and/or proximate to its destination. Besides location, the reply message could also provide other information such as velocity, temperature, humidity, pressure, forces or stresses.

In one embodiment, the mobile device (mobile communication device) can include a solar panel. The solar panel can provide electrical power for the mobile device. The solar panel can thus charge a battery used to power the mobile device and/or itself power the mobile device. When the mobile device is affixed to a person to be monitored, the solar panel can remain at least partially exposed to the outside environment so as to be able to receive light. The solar panel can be integrated with the housing of the mobile device or can be separate and coupled to the mobile device via one or more wires (e.g., a cable).

The present invention has described one or more GPS devices as to identify a location. However, the present invention is not limited to using GPS devices. In certain situations, other wireless or mobile devices can also serve as location-designating devices or position detection units, such as devices based on GSM technologies, Bluetooth or Wi-Fi technologies. Through the techniques of triangulation, these devices can also designate a location. Such triangulation techniques should be known to those skilled in the art.

As noted above, the location monitoring provided through used of the mobile devices can be used to monitor location of objects. The objects whose location is being monitored can vary with application. Examples of objects that can be monitored include people, animals (e.g., pets), articles (e.g., packages, vehicles, vessels), or other assets.

A number of embodiments have been described based on a mobile device. Generally speaking, the mobile device can be a cell phone, a personal digital assistant, a pager, camera, a personal computer or other devices with communication capabilities. The form factor of the mobile device can be small, such as wearable, pager sized or smaller, or pocket sized. Additional information on mobile devices is provided in U.S. patent application Ser. No. 10/397,640, filed Mar. 26, 2003, and entitled "INEXPENSIVE POSITION SENSOR," which is hereby incorporated herein by reference.

The above-described systems, devices, methods and processes can be used together with other aspects of a monitoring system, including the various aspects described in: (i) U.S. Provisional Patent Application No. 60/444,198, filed Jan. 30, 2003, and entitled "SYSTEM, METHOD AND APPARATUS FOR ACQUIRING, PRESENTING, MONITORING, DELIVERING, MANAGING AND USING STATUS INFORMATION," which is hereby incorporated herein by reference; (ii) U.S. Provisional Patent Application No. 60/418,491, filed Oct. 15, 2002, and entitled "SYSTEM, METHOD AND APPARATUS FOR ACQUIRING, PRESENTING, MONITORING, DELIVERING, MANAGING AND USING STATUS INFORMATION," which is hereby incorporated herein by reference; (iii) U.S. Provisional patent Application No. 60/404,645, filed Aug. 19, 2002, and entitled "SYSTEM, METHOD AND APPARATUS FOR

ACQUIRING, PRESENTING, MONITORING, DELIVERING, MANAGING AND USING POSITION AND OTHER INFORMATION,” which is hereby incorporated herein by reference; and (iv) U.S. Provisional Patent Application No. 60/375,998, filed Apr. 24, 2002, and entitled “SYSTEM, METHOD AND APPARATUS FOR ACQUIRING, PRESENTING, MANAGING AND USING POSITION INFORMATION,” which is hereby incorporated herein by reference.

The various embodiments, implementations, features and aspects of the invention noted above (including those incorporated by reference) can be combined in various ways or used separately. Those skilled in the art will understand from the description that the invention can be equally applied to or used in other various different settings with respect to various combinations, embodiments, implementations or features provided in the description herein.

The invention can be implemented in software, hardware or a combination of hardware and software. The invention, or at least certain software portions of the invention, can also be embodied as computer readable code on a computer readable medium. The computer readable medium is any data storage device that can store data which can thereafter be read by a computer system. Examples of the computer readable medium include read-only memory, random-access memory, CD-ROMs, magnetic tape, optical data storage devices, and carrier waves. The computer readable medium can also be distributed over network-coupled computer systems so that the computer readable code is stored and executed in a distributed fashion.

The advantages of the invention are numerous. Different embodiments or implementations may yield different advantages. One advantage of the invention is that position information can be acquired in a power efficient manner. Another advantage of the invention is that position monitoring can be achieved over an extended period. Still another advantage of the invention is that position information of objects being monitored can be centrally maintained and available through access to a website (e.g., monitoring server). Yet another advantage of the invention is that position monitoring apparatus can be inexpensive and have a small form factor, and thus be suitable for many uses.

The many features and advantages of the present invention are apparent from the written description, and thus it is intended by the appended claims to cover all such features and advantages of the invention. Further, since numerous modifications and changes will readily occur to those skilled in the art, it is not desired to limit the invention to the exact construction and operation as illustrated and described. Hence, all suitable modifications and equivalents may be resorted to as falling within the scope of the invention.

What is claimed is:

1. A battery-powered position acquisition apparatus, comprising:

- a position detection unit that acquires position data pertaining to said position acquisition apparatus;
- a communication interface for data communication over at least a wireless network; and
- a controller operatively connected to said position detection unit and said communication interface, said controller being configured to receive a configuration request via at least the communication interface, the configuration request requesting that status updates from said position acquisition apparatus be provided in accordance with a specified status update rate, and said controller subsequently operates to produce a status update in accordance with the specified status update

rate by at least accessing position information of the position acquisition apparatus determined using at least the position data acquired by said position detection unit, the status update including at least the position information,

wherein the configuration request received via the communication interface denotes the specified status update rate to be utilized by said position acquisition apparatus, and

wherein the controller is configured to initiate transmission of the status update produced in accordance with the specified status update rate via at least said communication interface.

2. A battery-powered position acquisition apparatus as recited in claim 1, wherein said position acquisition apparatus operates to periodically transmit successive status updates in accordance with a rate that is dependent on the specified update rate.

3. A battery-powered position acquisition apparatus as recited in claim 2, wherein the position acquisition apparatus includes a motion sensor, and

wherein the position acquisition apparatus operates to stop the successive status updates based on a determination that data from the motion sensor indicates that the position acquisition apparatus is not moving.

4. A battery-powered position acquisition apparatus as recited in claim 2, wherein the position acquisition apparatus includes a motion monitoring unit, and

wherein the position acquisition apparatus operates to reduce rate of the successive status updates to a minimum rate lower than the specified update rate based on a determination that data from the motion monitoring unit indicates that the position acquisition apparatus is not moving.

5. A battery-powered position acquisition apparatus as recited in claim 2, wherein the position acquisition apparatus includes a motion sensor, and

wherein the position acquisition apparatus operates to reduce rate of the status updates based on data from the motion sensor.

6. A battery-powered position acquisition apparatus as recited in claim 2, wherein the position acquisition apparatus includes a motion sensor, and

wherein the position acquisition apparatus operates to: determine an amount of movement of the position acquisition apparatus based on data from the motion sensor; and alter a rate of the status updates up or down depending on the amount of movement.

7. A battery-powered position acquisition apparatus as recited in claim 2, wherein the position acquisition apparatus includes a motion monitoring unit, and

wherein the position acquisition apparatus operates to: determine an amount of movement of the position acquisition apparatus based on data from the motion monitoring unit; alter a rate of the status updates up or down depending on the amount of movement; and ensure that, notwithstanding amount of movement, the rate of the status updates is at least at a minimum rate, the minimum rate being greater than zero.

8. A battery-powered position acquisition apparatus as recited in claim 1, wherein said position acquisition apparatus includes or couples to a battery, and

wherein said controller is further configured to: determine whether a charge level of said battery is deemed low, and reduce how frequently the status updates are wire-

21

lessly transmitted when it is determined that the charge level of said battery is deemed low.

9. A battery-powered position acquisition apparatus as recited in claim 8, wherein the determining whether the charge level of said battery is deemed low is based on a threshold level.

10. A battery-powered position acquisition apparatus as recited in claim 1, wherein said position acquisition unit comprises a GPS receiver.

11. A battery-powered position acquisition apparatus as recited in claim 1, wherein said position acquisition apparatus is used to track location of an asset or object.

12. A method for acquiring a status update from a portable, battery-powered status acquisition apparatus, the status acquisition apparatus including at least a position detection unit for acquiring position data and a communication interface for data communication over one or more wireless networks, the method comprising:

receiving a configuration request via at least the communication interface, the configuration request requesting that status updates from the status acquisition apparatus be provided in accordance with a specified status update rate, the configuration request denoting the specified status update rate to be utilized by the status acquisition apparatus;

acquiring position data via the position detection unit; producing a status update in accordance with the specified status update rate, the status update including or being based on at least the position data acquired by the position detection unit; and

transmitting, via the communication interface, the status update in accordance with the specified position update rate.

13. A method as recited in claim 12, wherein the method comprises:

repeating the acquiring, the producing and the transmitting for a plurality of successive status updates.

14. A method as recited in claim 13, wherein the transmitting of each of the plurality of successive status updates are periodically performed in accordance with the specified update rate.

15. A method as recited in claim 14, wherein the status acquisition apparatus includes a motion sensor, and wherein the method comprises:

stopping the successive status updates in accordance with the specified update rate based on a determination that data from the motion sensor indicates that the status acquisition apparatus is not moving.

16. A method as recited in claim 15, wherein the method comprises:

subsequently providing another status update as per a time limit even though data from the motion sensor indicates that the status acquisition apparatus is still not moving.

17. A method as recited in claim 15, wherein the method comprises:

subsequently resuming the successive status updates in accordance with the specified update rate when data from the motion sensor indicates that the status acquisition apparatus is again moving.

18. A method as recited in claim 14, wherein the status acquisition apparatus includes a motion sensor, and wherein the method comprises:

reducing rate of the successive status updates to a rate lower than the specified update rate based on a determination that data from the motion sensor indicates that the status acquisition apparatus is not moving.

22

19. A method as recited in claim 13, wherein the status acquisition apparatus includes a motion monitoring unit, and wherein the method comprises:

reducing rate of the successive status updates to a minimum rate lower than the specified update rate based on a determination that data from the motion monitoring unit indicates that the status acquisition apparatus is not moving.

20. A method as recited in claim 12, wherein the status acquisition apparatus includes a motion monitoring unit, and wherein the method comprises:

determining an amount of movement of the status acquisition apparatus based on data from the motion monitoring unit;

altering a rate of the status updates up or down depending on the amount of movement; and

ensuring that, notwithstanding amount of movement, the rate of the status updates is at least at a minimum rate, the minimum rate being greater than zero.

21. A method as recited in claim 12, wherein the status acquisition apparatus is used to track location of an asset or object.

22. A method as recited in claim 12, wherein the status acquisition apparatus includes a motion monitoring unit, and wherein the method comprises:

acquiring data via the motion monitoring unit; and transmitting, via the communication interface, the data acquired via the motion monitoring unit.

23. A method as recited in claim 22, wherein the transmitting of the data acquired via the motion monitoring unit is transmitted with the status update.

24. A method as recited in claim 22, wherein the transmitting of the data acquired via the motion monitoring unit includes speed data or direction of movement data of the status acquisition apparatus.

25. A method as recited in claim 22, wherein the transmitting of the data acquired via the motion monitoring unit includes vibration data or force data.

26. A method as recited in claim 12, wherein the status acquisition apparatus includes or couples to a battery, and wherein the method comprises:

determining whether a charge level or the battery is deemed low, and

reducing how frequently the status updates are wirelessly transmitted when it is determined that the charge level of the battery is deemed low.

27. A method as recited in claim 26, wherein the determining whether the charge level of the battery is deemed low is based on a threshold level.

28. A non-transitory computer readable medium including at least computer program code tangibly stored thereon, the computer program code operating to acquire status updates from a plurality of portable, battery-powered status acquisition apparatus, each of the plurality of status acquisition apparatus including at least a position detection unit for acquiring position data and a communication interface for data communication over one or more wireless networks, the computer readable medium comprising:

computer program code for providing a graphical user interface configured to facilitate designation of a specified status update rate for status information to be received from a specified one or more of the plurality of status acquisition apparatus;

computer program code for sending a configuration request to the specified one or more of the plurality of status acquisition apparatus via at least the communication interface associated therewith, the configuration

23

request requesting that status updates from the specified one or more of the plurality of status acquisition apparatus be provided in accordance with the specified status update rate, the configuration request denoting the specified status update rate to be utilized by the specified one or more of the plurality of status acquisition apparatus; and
 computer program code for receiving status updates from the specified one or more of the plurality of status acquisition apparatus via at least the communication interface associated therewith, the status updates being received from the specified one or more of the plurality of status acquisition apparatus after the configuration request has been sent thereto, and the status updates being received from the specified one or more of the plurality of status acquisition apparatus being in accordance with the specified status update rate,
 wherein, for a given one of the one or more of the plurality of status acquisition apparatus, the status updates being received therefrom include or are based on at least the position data acquired by the position detection unit of

24

the given one of the one or more of the plurality of status acquisition apparatus.
29. A non-transitory computer readable medium as recited in claim **28**, wherein the position detection unit comprises a GPS receiver.
30. A non-transitory computer readable medium as recited in claim **28**, wherein each of the plurality of status acquisition apparatus are used to track location of an asset or object.
31. A non-transitory computer readable medium as recited in claim **30**, wherein the status acquisition apparatus includes or couples to a battery, and
 wherein the method comprises:
 determining whether a charge level of the battery is deemed low, and
 reducing how frequently the status updates are wirelessly transmitted when it is determined that the charge level of the battery is deemed low.
32. A method as recited in claim **31**, wherein the determining whether the charge level of the battery is deemed low is based on a threshold level.

* * * * *