



US006975941B1

(12) **United States Patent**
Lau et al.

(10) **Patent No.:** **US 6,975,941 B1**
(45) **Date of Patent:** **Dec. 13, 2005**

(54) **METHOD AND APPARATUS FOR INTELLIGENT ACQUISITION OF POSITION INFORMATION**

(76) Inventors: **Chung Lau**, 859 Russet Dr., Sunnyvale, CA (US) 94087; **C. Douglass Thomas**, 1193 Capri Dr., Campbell, CA (US) 95008

(*) Notice: Subject to any disclaimer, the term of this patent is extended or adjusted under 35 U.S.C. 154(b) by 0 days.

(21) Appl. No.: **10/397,473**

(22) Filed: **Mar. 26, 2003**

Related U.S. Application Data

(60) Provisional application No. 60/444,198, filed on Jan. 30, 2003, provisional application No. 60/418,491, filed on Oct. 15, 2002, provisional application No. 60/404,645, filed on Aug. 19, 2002, provisional application No. 60/375,998, filed on Apr. 24, 2002.

(51) **Int. Cl.**⁷ **G06F 7/00**

(52) **U.S. Cl.** **701/213; 455/517; 455/404.2; 455/456.1; 340/539.13; 340/988**

(58) **Field of Search** 701/213, 216; 455/456, 574, 517, 404.2, 521, 456.1, 435, 455/436; 340/407, 540, 539, 573.1, 502, 340/988, 438, 928, 870.16, 539.13, 568.1; 342/126, 357, 457

(56) **References Cited**

U.S. PATENT DOCUMENTS

5,389,934 A	2/1995	Kass	342/357.07
5,400,020 A	3/1995	Jones et al.	340/994
5,461,365 A	10/1995	Schlager et al.	340/573.4
5,491,486 A	2/1996	Welles, II et al.	342/357.07
5,512,902 A	4/1996	Guthrie et al.	342/357.07
5,515,858 A	5/1996	Myllymaki	600/301
5,528,247 A	6/1996	Nonami	342/357.1
5,528,518 A	6/1996	Bradshaw et al.	

5,539,748 A	7/1996	Raith	370/329
5,541,845 A	7/1996	Klein	701/207
5,550,551 A	8/1996	Alesio	342/457
5,568,119 A	10/1996	Schipper et al.	340/825.37
5,570,412 A	10/1996	LeBlanc	
5,576,716 A	11/1996	Sadler	340/994
5,592,173 A *	1/1997	Lau et al.	342/357
5,623,260 A	4/1997	Jones	340/573.4
5,629,678 A	5/1997	Gargano et al.	340/573.4
5,652,570 A	7/1997	Lepkofker	340/870.09
5,710,551 A	1/1998	Ridgeway	340/539.13
5,712,619 A	1/1998	Simkin	340/573.1
5,731,757 A	3/1998	Layson et al.	342/357.07
5,731,788 A	3/1998	Reeds	340/573.1
5,742,233 A	4/1998	Hoffman et al.	705/28
5,751,245 A	5/1998	Janky et al.	455/404.2
5,771,001 A	6/1998	Cobb	707/10
5,774,876 A	6/1998	Woolley et al.	340/573.4

(Continued)

FOREIGN PATENT DOCUMENTS

EP 0 874 529 A2 10/1998

(Continued)

OTHER PUBLICATIONS

J.Wrolstad, "Chrysler Claims First With Bluetooth Mobile Phone System," Wireless Newsfactor, Oct. 26, 2001.

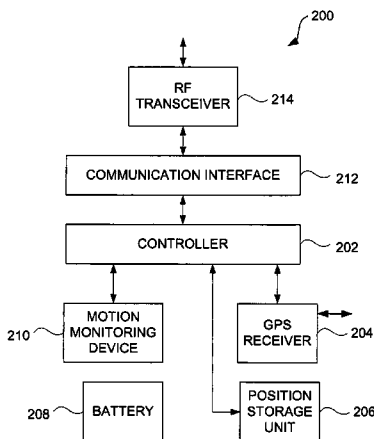
(Continued)

Primary Examiner—Thomas G. Black
Assistant Examiner—Tuan C To

(57) **ABSTRACT**

Improved methods and systems for position acquisition and/or monitoring are disclosed. The position acquisition and/or monitoring can be performed with improved intelligence so that data acquisition, transmission and/or processing is reduced. As a result, the position acquisition and/or monitoring is able to be performed in a power efficient manner.

29 Claims, 7 Drawing Sheets



U.S. PATENT DOCUMENTS

5,797,091 A 8/1998 Clise et al. 368/10
 RE35,920 E 10/1998 Sorden et al. 320/101
 5,835,907 A 11/1998 Newman 342/357.07
 5,841,352 A 11/1998 Prakash 701/208
 5,844,862 A 12/1998 Cocatre-Zilgien 342/357.06
 5,850,196 A 12/1998 Mowers 340/540
 5,948,043 A 9/1999 Mathis 340/573.1
 5,959,575 A 9/1999 Abbott 340/905
 5,959,577 A 9/1999 Fan et al.
 5,963,130 A 10/1999 Schlager et al. 342/357.13
 6,002,363 A 12/1999 Krasner
 6,002,982 A 12/1999 Fry
 6,009,319 A * 12/1999 Khullar et al. 455/343
 6,013,007 A 1/2000 Root et al.
 6,014,080 A 1/2000 Layson, Jr. 455/518
 6,014,090 A 1/2000 Rosen et al. 340/573.3
 6,023,241 A 2/2000 Clapper 342/357.07
 6,032,051 A 2/2000 Hall et al. 340/573.4
 6,034,622 A 3/2000 Levine
 6,054,928 A 4/2000 Lemelson 340/573.4
 6,064,336 A * 5/2000 Krasner 342/357.05
 6,067,018 A 5/2000 Skelton et al. 342/417
 6,067,044 A 5/2000 Whelan et al. 342/357.07
 6,072,396 A 6/2000 Gaukel 340/573.4
 6,078,290 A 6/2000 McBurney et al. 702/153
 6,083,248 A 7/2000 Thompson 600/595
 6,083,353 A 7/2000 Alexander 342/357.07
 6,094,168 A 7/2000 Duffett-Smith et al.
 6,100,806 A 8/2000 Gaukel 702/153
 6,131,067 A 10/2000 Girerd et al.
 6,141,570 A * 10/2000 O'Neill, Jr. et al. 455/574
 6,144,303 A 11/2000 Federman
 6,148,280 A 11/2000 Kramer 600/595
 6,171,264 B1 1/2001 Bader 600/595
 6,172,640 B1 1/2001 Durst et al. 342/357.07
 6,175,616 B1 1/2001 Light et al. 379/88.14
 6,198,390 B1 3/2001 Schlager et al. 340/540
 6,198,431 B1 3/2001 Gibson 342/357.07
 6,198,930 B1 3/2001 Schipper 455/440
 6,199,045 B1 3/2001 Giniger et al. 705/1
 6,226,622 B1 5/2001 Dabbieri 705/28
 6,232,916 B1 5/2001 Grillo et al. 342/357.07
 6,236,358 B1 5/2001 Durst et al. 342/357.09
 6,238,337 B1 5/2001 Kambhatla et al. 600/300
 6,243,039 B1 6/2001 Elliot 342/457
 6,246,376 B1 6/2001 Bork et al. 343/760
 6,263,280 B1 7/2001 Stingone, Jr. 701/213
 6,278,936 B1 8/2001 Jones 701/201
 6,282,362 B1 8/2001 Murphy et al. 386/46
 6,292,687 B1 9/2001 Lowell et al. 600/515
 6,298,306 B1 10/2001 Suarez et al. 701/213
 6,300,875 B1 10/2001 Schafer 340/573.1
 6,314,308 B1 * 11/2001 Sheynblat et al. 455/574
 6,317,049 B1 11/2001 Toubia et al. 340/573.4
 6,323,807 B1 11/2001 Golding et al. 342/419
 6,324,213 B1 11/2001 Harrison 375/240
 6,327,533 B1 12/2001 Chou 701/207
 6,331,817 B1 12/2001 Goldberg 340/573.1
 6,339,397 B1 1/2002 Baker 342/357.1
 6,340,928 B1 1/2002 McCurdy 342/357.07
 6,349,257 B1 2/2002 Liu et al. 340/436
 6,353,390 B1 3/2002 Beri et al. 701/200
 6,353,798 B1 3/2002 Green et al. 340/572.1
 6,356,841 B1 3/2002 Hamrick et al. 701/213
 6,362,778 B2 3/2002 Neher 701/213
 6,363,254 B1 3/2002 Jones et al.
 6,363,323 B1 3/2002 Jones 342/357.07
 6,377,810 B1 4/2002 Geiger et al. 455/456.2
 6,388,612 B1 5/2002 Neher 701/213
 6,407,698 B1 6/2002 Ayed 342/357.07
 6,411,892 B1 6/2002 Van Diggelen 342/357.07

6,411,899 B2 6/2002 Dussell et al. 701/207
 6,421,538 B1 7/2002 Byrne 701/211
 6,427,120 B1 7/2002 Garin et al. 455/441
 6,430,602 B1 8/2002 Kay et al. 701/213
 6,433,732 B1 8/2002 Dutta et al. 707/206
 6,441,778 B1 8/2002 Durst et al. 342/357.07
 6,445,937 B1 9/2002 daSilva 342/357.07
 6,453,237 B1 9/2002 Fuchs et al. 455/574
 6,469,639 B2 * 10/2002 Tanenhaus et al. 340/870.16
 6,471,087 B1 10/2002 Shusterman 701/213
 6,522,871 B1 * 2/2003 Patrick et al. 455/256
 6,522,889 B1 2/2003 Aarnio
 6,529,164 B1 3/2003 Carter
 6,552,652 B2 * 4/2003 Beken 340/407
 6,559,620 B2 5/2003 Zhou et al. 221/2
 6,625,437 B1 9/2003 Jampolsky et al. 455/405
 2001/0020204 A1 9/2001 Runyon et al. 342/457
 2001/0028304 A1 10/2001 I'Anson et al. 340/539
 2001/0044299 A1 11/2001 Sandegren 455/422
 2001/0052849 A1 12/2001 Jones, Jr. 340/572.1
 2002/0000930 A1 1/2002 Crowson et al. 342/357.1
 2002/0027507 A1 3/2002 Yarin et al. 340/573.1
 2002/0038182 A1 * 3/2002 Wong et al. 701/213
 2002/0050945 A1 5/2002 Tsukishima et al. ... 342/357.12
 2002/0057192 A1 5/2002 Eagleson et al. 340/305
 2002/0063622 A1 5/2002 Armstrong et al. 340/10.31
 2002/0077080 A1 6/2002 Greene 455/412
 2002/0087260 A1 7/2002 Hancock et al. 701/200
 2002/0111171 A1 * 8/2002 Boesch et al. 455/456
 2002/0111819 A1 8/2002 Li et al. 705/1
 2002/0115453 A1 8/2002 Poulin et al. 455/456
 2002/0119789 A1 8/2002 Friedmen 455/456
 2003/0003943 A1 * 1/2003 Bajikar 455/550
 2003/0013445 A1 * 1/2003 Fujiwara et al. 455/435
 2003/0151507 A1 * 8/2003 Andre et al. 340/539.13
 2004/0034470 A1 2/2004 Workman 701/213

FOREIGN PATENT DOCUMENTS

EP 1 037 447 A2 9/2000
 WO WO 97/41654 11/1997
 WO WO 98/01769 A1 1/1998
 WO WO 98/16045 4/1998
 WO WO 00/51391 8/2000
 WO WO 01/50151 A1 7/2001
 WO WO 02/42979 A1 5/2002
 WO WO 02/084618 A1 10/2002
 WO WO 03/012720 A1 2/2003

OTHER PUBLICATIONS

K. Miyake, "Sharp to unveil 3G PDA-type cell phone," ITworld.com, Inc., Jan. 11, 2002.
 "Audiovox Intros GPS, Bluetooth Phone;" INT Media Group, Inc. (allNetDevices), Apr. 5, 2002. (downloaded: www.allnetdevices.com/wireless/news/2001/1/15/audiovox_intros.html).
 "Start-up crams single chip with phone, GPS and Bluetooth," CNET Network, Inc. (ZDNET), Mar. 22, 2002 (downloaded: <http://news.zdnet.co.uk/story/0,t284-x2107163,00.html>).
 Smart Antenna, Specification sheet by Axiom Navigation Inc. (www.axiomnav.com).
 Swift B2 GPS Receiver, Specification sheet by Axiom Navigation Inc. (www.axiomnav.com).
 Swift A2 GPS Receiver, Specification sheet by Axiom Navigation Inc. (www.axiomnav.com).
 SandPiper GPS Receiver, Specification sheet by Axiom Navigation Inc. (www.axiomnav.com).

- “Fleet Management Systems-Asset Tracking Devices,” Axiom Navigation Inc., 2000-2001 (downloaded Oct. 19, 2002: www.axiomnav.com/Prod_Systems/prod_system.asp).
- “Global Cell Phone Location,” Axiom Navigation Inc., 2000-2001 (downloaded Oct. 19, 2002: www.axiomnav.com/Prod_Global/prod_global.asp).
- “X-GPS™—Hybrid GPS Location Server Solution,” Axiom Navigation Inc., 2000-2001 (downloaded Oct. 19, 2002: www.axiomnav.com/Prod_Global/x-gps.asp).
- “Digital/Analog Compass Sensors” and “1655 Digital Compass Sensor,” webpages, The Robson Company, Inc., pp. 1-2 (downloaded Apr. 11, 2002: www.dinsmoresensors.com/index.html).
- Delphi and MobileAria Demonstrate True Hands Free In-Vehicle Mobile Productivity Services At CES, Press Release, Delphi Automotive Systems, Jan. 8, 2002 (downloaded Apr. 5, 2002: www.delphiauto.com/news/pressRelease/pr6828-01082002).
- “NavMate® Navigation System,” Visteon Corporation, webpage, pp. 1-2 (downloaded Jun. 21, 2002: www.visteon.com/technology/automotive/navmate.html).
- “Danger-Products” and “HipHop Communicator Brochure,” Danger, Inc., downloaded Oct. 26, 2003: www.danger.com/products.php).
- “MMS phones: Don’t believe the hype,” CNN.com/SCI-TECH, Aug. 8, 2002, pp. 1-3.
- “What is “3G” technology?,” CNN.com/SCI-TECH, Oct. 22, 2001, pp. 1-3.
- “Devices for Text Messages in Deutsche Telekom’s fixed network have already found their way into many households,” Deutsche Telekom AG, Press Release, Mar. 13, 2002, pp. 1-2.
- “FunMail Launches on the NTT DoCoMo i-mode network,” FunMail, Press Release, May 1, 2001, pp. 1-2.
- “Send images to i-mode phones,” Mobile Media Japan, 2001, pp. 1-3.
- “Introduction to SMS,” by C. Tull of Anywhere YouGo.com, pp. 1-4 (downloaded: www.devx.com/wireless/articles/SMS/SMSintro-asp).
- “The Always on Network,” Position Paper, Nortel Networks, 2002.
- “Mobile Location Based Services: Cell Tracking Devices of People & Thongs . . .,” pp. 1-2, (downloaded Aug. 10, 2002: <http://3glocate.com>).
- “3G Mobile Internet Revolution, . . . only with Location Based Services!” pp. 1, (downloaded Aug. 10, 2002: <http://webhome.idirect.com/~dental/3glocator/home.htm>).
- “What are Instant Messages?” Yahoo! Messenger Help, Yahoo! Inc., 2002, pp. 1.
- “What is a Friend List?” Yahoo! Messenger Help, Yahoo! Inc., 2002, pp. 1.
- “Status Icons/Messages,” Yahoo! Messenger Help, Yahoo! Inc., 2002, pp. 1-2.
- “Yahoo! Messenger for WAP,” Yahoo Messenger, Yahoo! Inc., 2002 (tours 1-9), pp. 1-17 (downloaded Oct. 27, 2002: www.messenger.yahoo.com/messenger/wireless/wap/tour1.html (through /tour9.html)).
- IMVironment, Yahoo! Meseanger, Yahoo! Inc., 2002, pp. 1-12 (downloaded (including) Oct. 27, 2002: <http://help.yahoo.com/help/us/mesg/imv/imv-01.html> (through/index5.html)).
- “Yahoo! Messenger for Text Messaging,” Yahoo! Messenger, Yahoo! Inc., 2002, pp. 1-10 (downloaded Oct. 27, 2002: <http://messenger.yahoo.com/messenger/wireless/smsmsg/tour1.html> (through /tour7.html)).
- “Yahoo! Messenger—Sending Messages to a Mobile Phone,” Yahoo! Messenger, Yahoo! Inc., 2002, pp. 1-7 (downloaded Oct. 27, 2002: <http://messenger.yahoo.com/messenger/wireless/pc2sms/tour1.html> (through /tour7.html)).
- LoadTrak, pp. 1-2 (downloaded Jun. 4, 2002: www.loadtrak.com).
- “pulver.com’s Location Based Services Report,” pulver.com, Inc., Oct. 2001, pp. 1-17 (downloaded Jun. 4, 2002: www.pulver.com/lbsreport/lastbsreport.02/oct01.txt).
- “Wherify Wireless GPS Locator for Kids User Guide,” Wherify Wireless, Inc., 2003, pp. 1-106.
- “Wherify Wireless and SiRF Team to Deliver Child Locator System,” Wherify Wireless, Inc., Press Release, Mar. 19, 2001, pp. 1-2.
- “Wherify Wireless Breakthrough in Location-Based Services,” Mobilemag.com, Feb. 28, 2001, p. 1.
- “Wherify Wireless Location Services,” Wherify Wireless, Inc., webpages, pp. 1-5 (downloaded: Mar. 25, 2003: www.wherifywireless.com/prod_watches.htm).
- Marek, “The Unstoppable SnapTrack,” Wireless Week, Dec. 18, 2000.
- Rabinowitz and Spilker, Jr., “Positioning Using the ATSC Digital Television Signal,” Rosum Corporation Whitepaper, Rosum Corporation (downloaded May 21, 2003).
- Rabinowitz and Spilker, Jr., “A New Positioning System Using Television Synchronization Signals,” Rosum Corporation, pp. 1-11 (downloaded May 21, 2003).
- “Trimble and Rosum Team to Develop Universal Positioning Technology,” Trimble Navigation, Inc., News Release, Feb. 27, 2003.
- Wong, “Fishers, golfers join the rush to GPS,” San Jose Mercury News, news article, Mar. 25, 2002.
- Ryan, “Catching up with Dick Tracy,” San Francisco Chronicle, news article, Mar. 18, 2002.
- “Theme Park Visitors & Cashless Purchasing,” Case Study, RJI Incorporated, webpages, pp. 1-2 (downloaded Mar. 16, 2002: www.rji.cc/casestudies/themepark.html).
- “Ski Rental with Auto ID and Tracking,” Case Study, RJI Incorporated, webpages, pp. 1-2 (downloaded Mar. 16, 2002: www.rji.cc/casestudies/skirentalcompany.html).
- “Real-Time Warehouse Tracking,” Case Study, RJI Incorporated, webpages, pp. 1-2 (downloaded Mar. 16, 2002: www.rji.cc/casestudies/rtwarehousetracking.html).
- “Frozen Food Warehouse,” Case Study, RJI Incorporated, webpages, pp. 1-3 (downloaded Mar. 16, 2002: www.rji.cc/casestudies/frozenfoodwarehouse.html).
- “Airline Cargo Containers,” Case Study, RJI Incorporated, webpages, pp. 1-2 (downloaded Mar. 16, 2002: www.rji.cc/casestudies/airlinecargocounters.html).
- “Airline Food Carts,” Case Study, RJI Incorporated, webpages, pp. 1-2 (downloaded Mar. 16, 2002: www.rji.cc/casestudies/airlinefoodcarts.html).
- “Real Time Location System (RTLS),” Case Study, RJI Incorporated, webpages, p. 1 (downloaded Mar. 16, 2002: www.rji.cc/technology/rtls.html).
- “Radio Frequency Identification (RFID),” Case Study, RJI Incorporated, webpage, p. 1 (downloaded Mar. 16, 2002: www.rji.cc/technology/rfid.html).

- “MoniTrack,” Case Study, RJI Incorporated, webpages, pp. 1-2 (downloaded Mar. 16, 2002: www.rji.cc/technology/telematic.html).
- “Parkwatch and Wherenet Unveil the First Amusement Visitor Locating System,” ParkWatch, Press Release, Jun. 27, 2000.
- Real Time Locating System, Executive Summary, Technology Systems International, Inc.
- “Locate Networks: Our Service,” Locate Networks, webpages, pp. 1-7 (downloaded Sep. 26, 2002: www.locatenetworks.com/).
- “Technical Applications Of Our Current Technology,” Aetherwire, webpages, pp. 1-4 (downloaded Mar. 16, 2002: www.aetherwire.com/CDROM/General/appl1.html).
- Bickers, “Eyes in the sky,” SafeTzone Technology Corporation, webpages, 2001, pp. 1-3 (downloaded: www.safetzone.com/newsKiosk.asp).
- “IO Data Develops GPS Adapter for I-Mode Mobile,” AsiaBizTech, Sep. 17, 2002, pp. 1-2.
- “Pakhound: Your Watchdog In The Shipping Industry,” website pages, pp. 1-3 (downloaded Jun. 9, 2002: www.pakhound.com/fact.asp).
- “Guide to Tracking Info.,” Nippon Express, website page, p. 1 (downloaded Jun. 9, 2002: www.nittsu.co.jp/edoc/howtoe.htm).
- My.Roadway!, Roadway Express, Inc., webpages, pp. 1-2, (downloaded Jun. 9, 2002: www.quiktrak.roadway.com/cgi-bin/quiktrak).
- Packtrack™, PackTrack.com, webpages, pp. 1-2, (downloaded Jun. 9, 2002: www.packtrack.com).
- “Welcome to Traker Systems,” Traker Systems, webpages, pp. 1-2 (downloaded Jun. 9, 2002: www.trakersystems.com).
- “Welcome to Iship, Inc.,” iShip, Inc., webpages, pp. 1-2, (downloaded Jun. 9, 2002: www.iship.com/).
- “Turning Position Into Knowledge,” SkyBitz, webpage, p. 1, (downloaded Nov. 15, 2002: www.skybitz.com).
- “News,” SkyBitz, webpages, pp. 1-8, (downloaded Nov. 15, 2002: www.skybitz.com/about/news.html).
- “GLS Communicator,” SkyBitz, webpages, pp. 1-2, (downloaded Nov. 15, 2002: www.skybitz.com/gls/communicator.html).
- “Global Locating Services,” SkyBitz, webpage, p. 1, (downloaded Nov. 15, 2002: www.skybitz.com/services/gls.html).
- F. Rivera, “Special Report: Keeping Tabs on Your Teen,” 7 News, Boston, Apr. 30, 2002, pp. 1-3.
- GS2000, Omega Research and Development, Inc., webpages, pp. 1-9 (pp. 7-9 pertain to an online tour) (downloaded Jul. 14, 2003: www.gps2000online.com/).
- “Track Your FedEx Shipments via Email,” FedEx, webpages, pp. 1-2, (downloaded Oct. 29, 2002: www.fedex.com).
- “Track Shipments—Detailed Results,” FedEx, webpages, pp. 1-2 (downloaded Oct. 29, 2002: www.fedex.com).
- FedEx Insight, FedEx, webpages, pp. 1-11 (downloaded Oct. 29, 2002: www.fedex.com).
- “Tracking Helpful Tips,” United Parcel Service of America, Inc. (UPS), webpages, pp. 1-2 (downloaded Jun. 1, 2002: www.ups.com/tracking/nm_help.html).
- “My UPS.COM Benefits,” United Parcel Service of America, Inc.(UPS), webpage, p. 1 (downloaded Apr. 13, 2002: www.ups.com/myupsinfo/info/benefits?pnav=stdsservice).
- “Enhanced Tracking,” United Parcel Service of America, Inc. (UPS), webpages, pp. 1-2 (downloaded Jun. 1, 2002: www.ups.com/myupsinfo/info/etrack?pnav=stdservice).
- “UPS Package Tracking,” United Parcel Service of America, Inc. (UPS), webpages, pp. 1-2 (downloaded Apr. 13, 2002: www.ups.com/tracking/tracking.html).
- “UPS Wireless Solutions,” United Parcel Service of America, Inc. (UPS), webpage, p. 1 (downloaded Apr. 13, 2002: www.ups.com/myupsinfo/info/wireless?pnav=stdservice).
- Crossbow Product Guide—Accelerometers, Crossbow Technology, Inc., webpages, pp. 1-3 (downloaded Apr. 11, 2002: www.xbow.com/Products/Accelerometers.htm).
- Accelerometers—General Purpose, LP Series, Crossbow Technology, Inc., data sheet, pp. 1-3 (downloaded Apr. 11, 2002: www.xbow.com/Products/Accelerometers.htm).
- Precision Accelerometers, PCB Piezoelectronics Products—SVS Division, webpages, pp. 1-2 (downloaded Apr. 11, 2002: www.pcb.com/products/svs/index.html).
- “352C22 Miniature Low Profile ICP Accelerometer,” Precision Accelerometers, PCB Piezoelectronics Products—SVS Division, webpages, pp. 1-2 (downloaded Apr. 11, 2002: www.pcb.com/products/svs/svs352c22.html).
- K. Hill, “Prada Use Smart Tags To Personalize Shopping,” CRMDaily.com, Apr. 24, 2002., pp. 1-4.
- “Savi Reusable Transport Container,” Savi Technology, Inc., Apr. 30, 2002, pp. 1-2.
- “Developing a GPSs for the Global Supply Chain,” Aberdeen Group, Inc., Executive White Paper, Jun. 2002.
- Motorola Consumer Catalog: Pagers (webpage), Motorola, Inc., downloaded Jan. 19, 2000.
- SnapTrack in Action (webpage), SnapTrack Inc., downloaded Jan. 19, 2000.
- SnapTrack—Technology At Work (webpage), SnapTrack Inc., downloaded Jan. 19, 2000.
- SnapTrack—Privacy Protection (webpage), SnapTrack Inc., downloaded Jan. 19, 2000.
- “An Introduction to SnapTrack Server-Aided GPS Technology,” SnapTrack Inc.
- “SnapTrack and SignalSoft Corp. Team Up to Trial Location-based Information Service for GSM Test Group,” Press Release, SnapTrack Inc., Dec. 6, 1999.
- “SnapTrack Awarded Additional Key Patents for Enhanced GPS System,” Press Release, SnapTrack Inc., Jan. 4, 2000.
- TruePosition Virtual Brochure (webpage), TruePosition, Inc.
- “Carrier and end-user applications for wireless location systems,” TruePosition, Inc., pp. 1-7.
- Stilp, Louis A., “Examining the Coming Revolution in Location Services,” pp. 1-11.
- Commercial Uses for LoJack (webpage), LoJack Corporation, downloaded Jan. 22, 2000.
- Chertkoff, Rachel, “Vehicle Locator Systems,” Pager Technology, pp. 1-2, 1998.
- “EarthTrack™ Vehicle Tracking Systems,” Outfitter Satellite, Inc., 1998 (downloaded Jan. 22, 2000).
- Kleinknecht, William, “Juvenile authorities want satellite tracking for felons,” The Star-Ledger of New Jersey, Nov. 18, 1997.

* cited by examiner

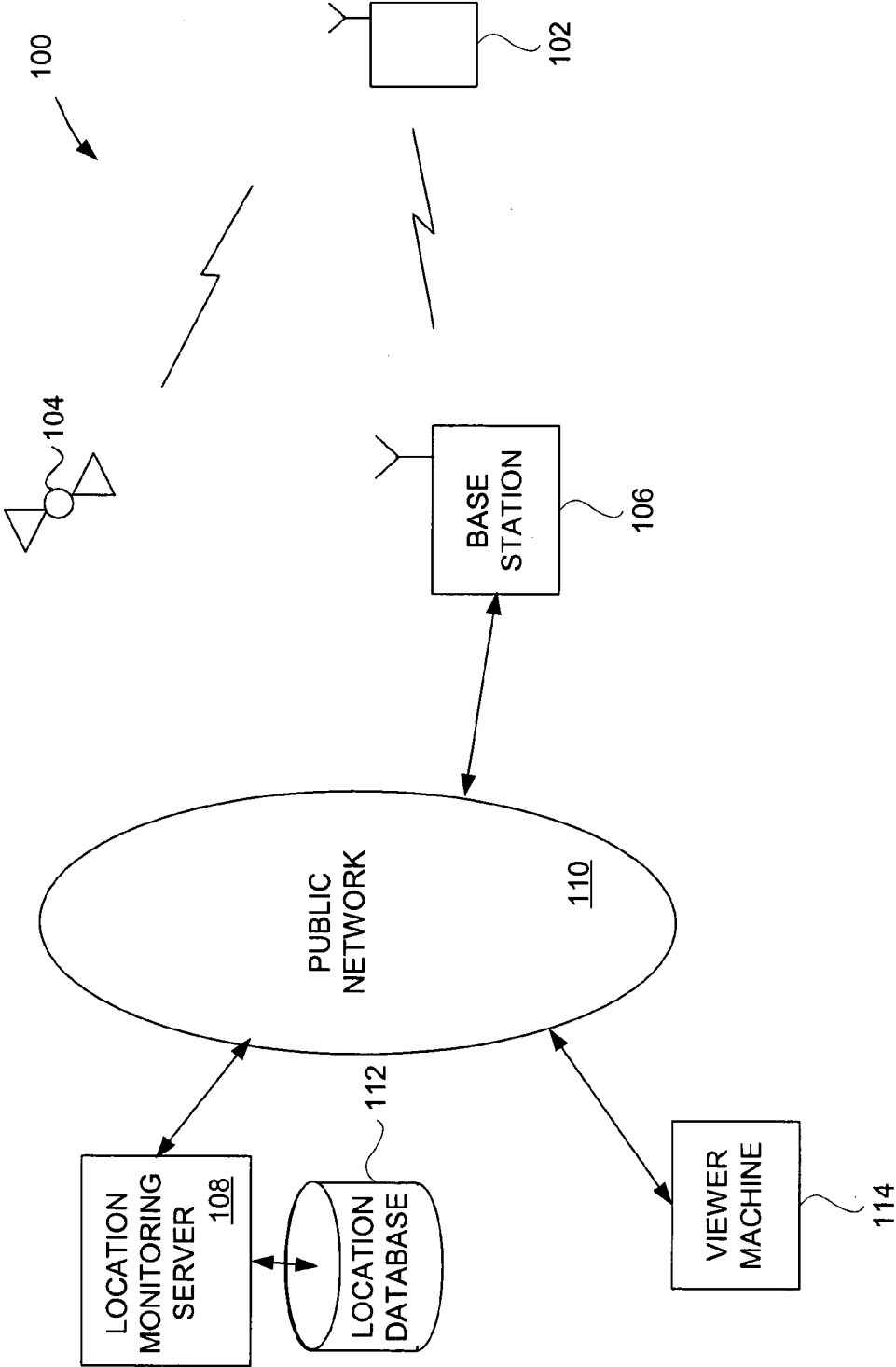


FIG. 1

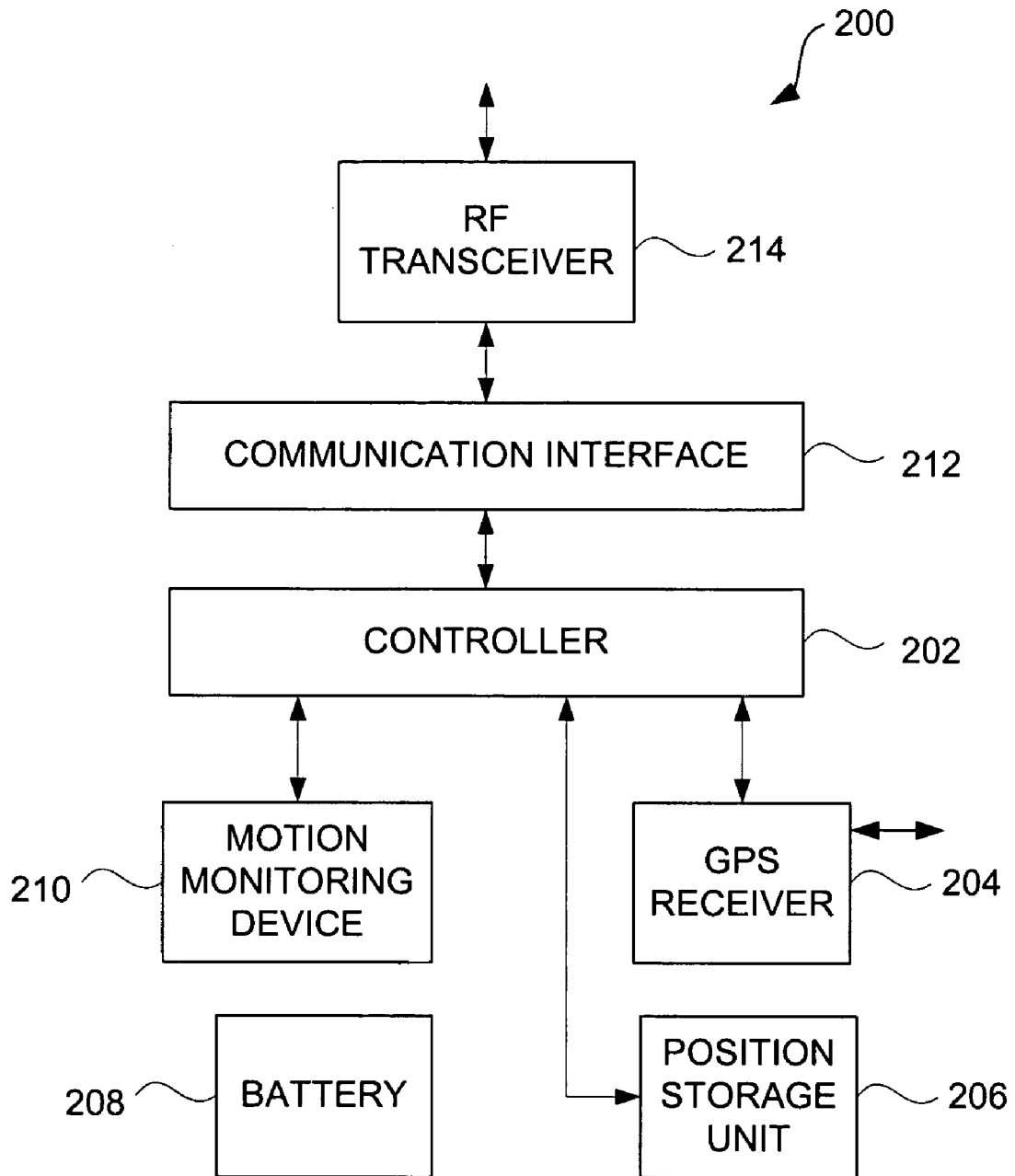


FIG. 2

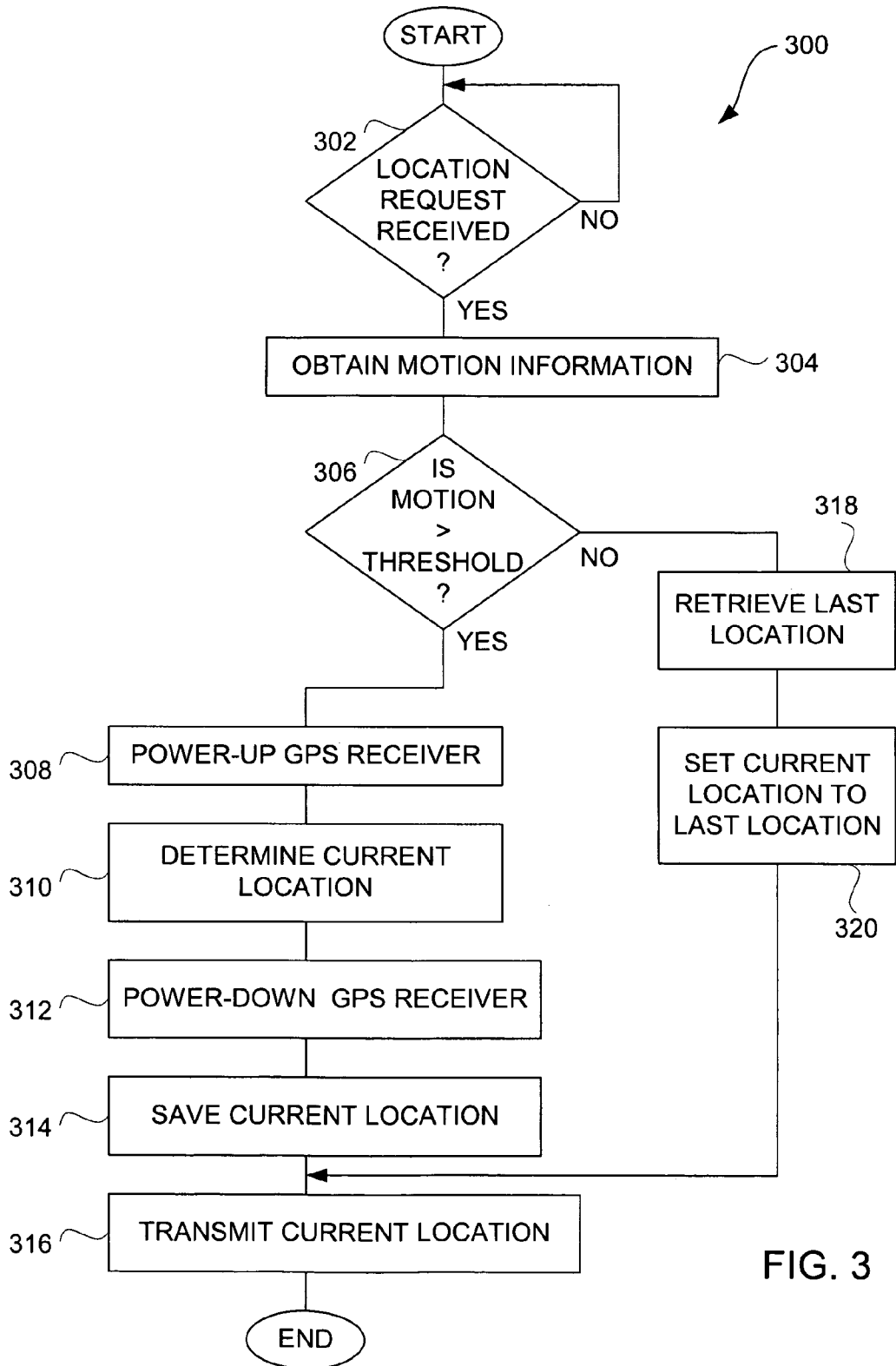


FIG. 3

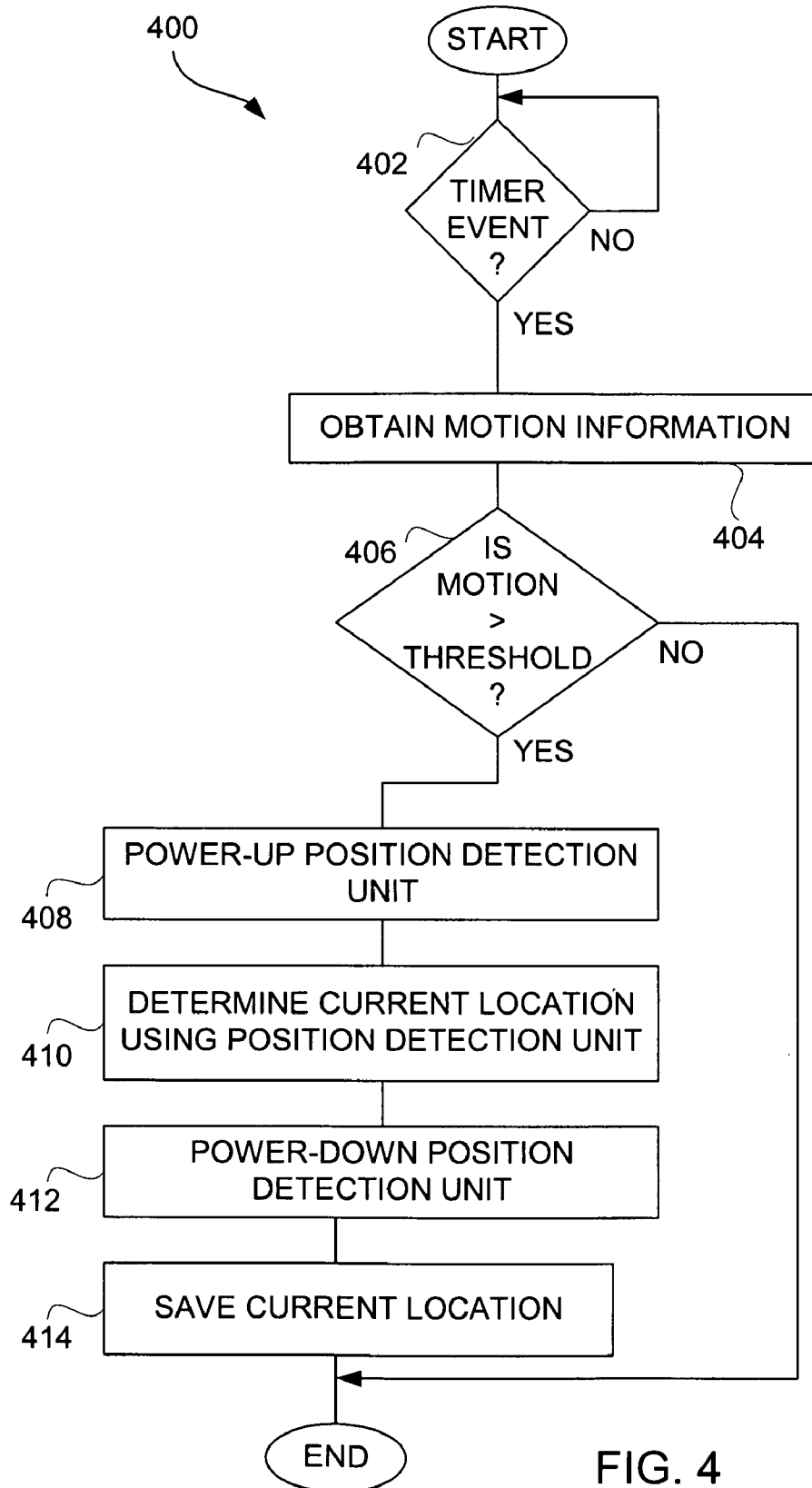


FIG. 4

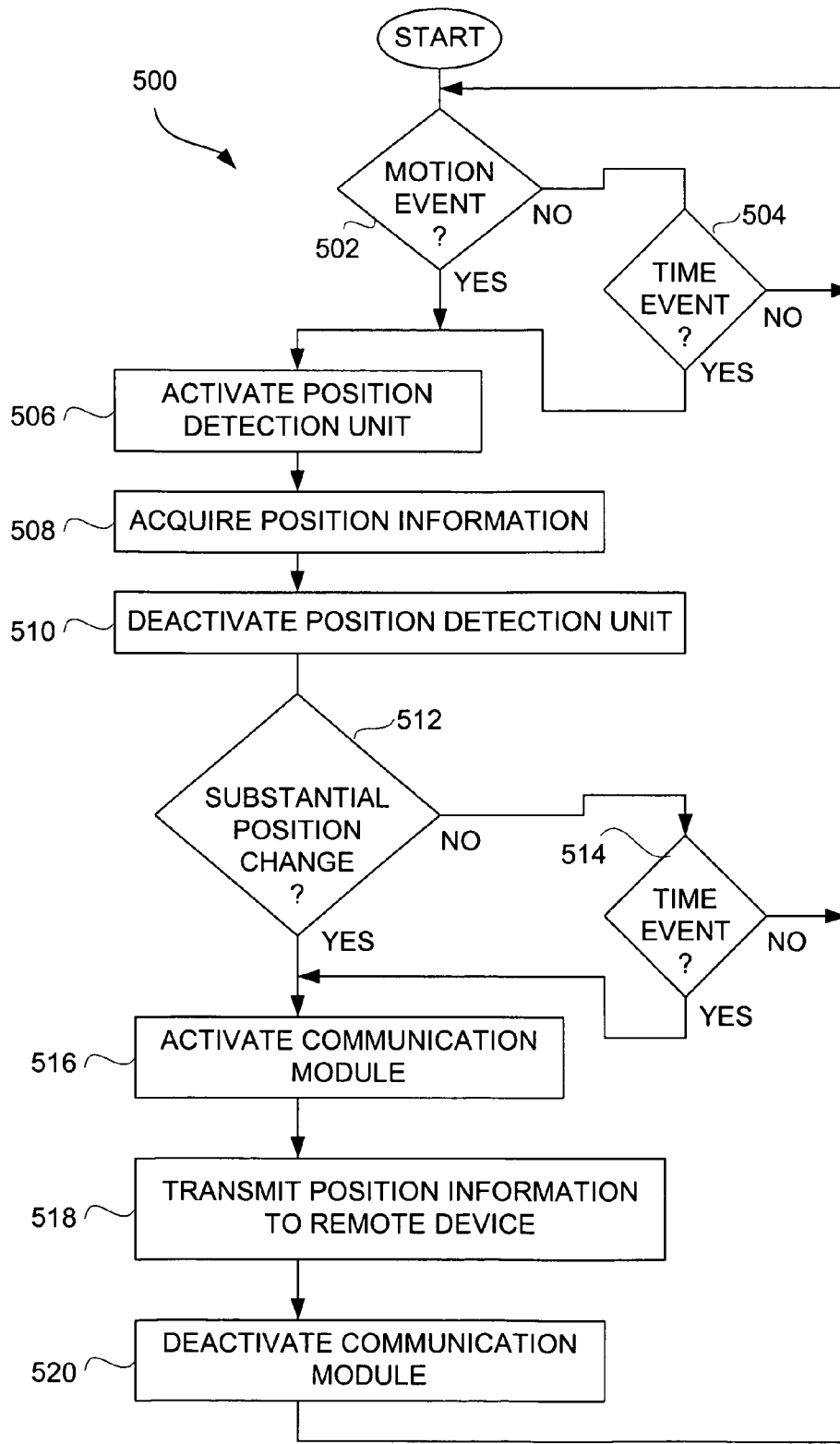


FIG. 5

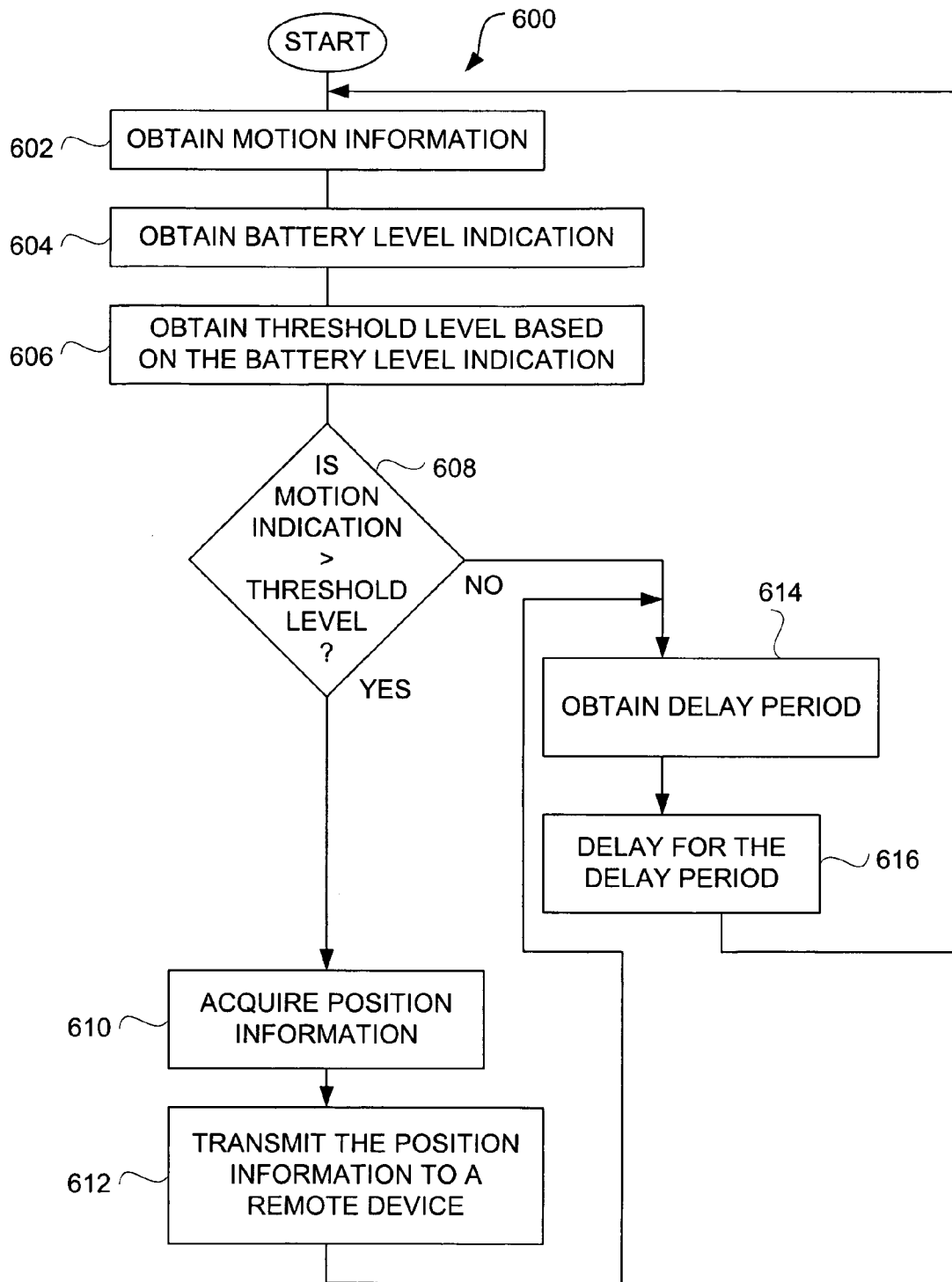


FIG. 6

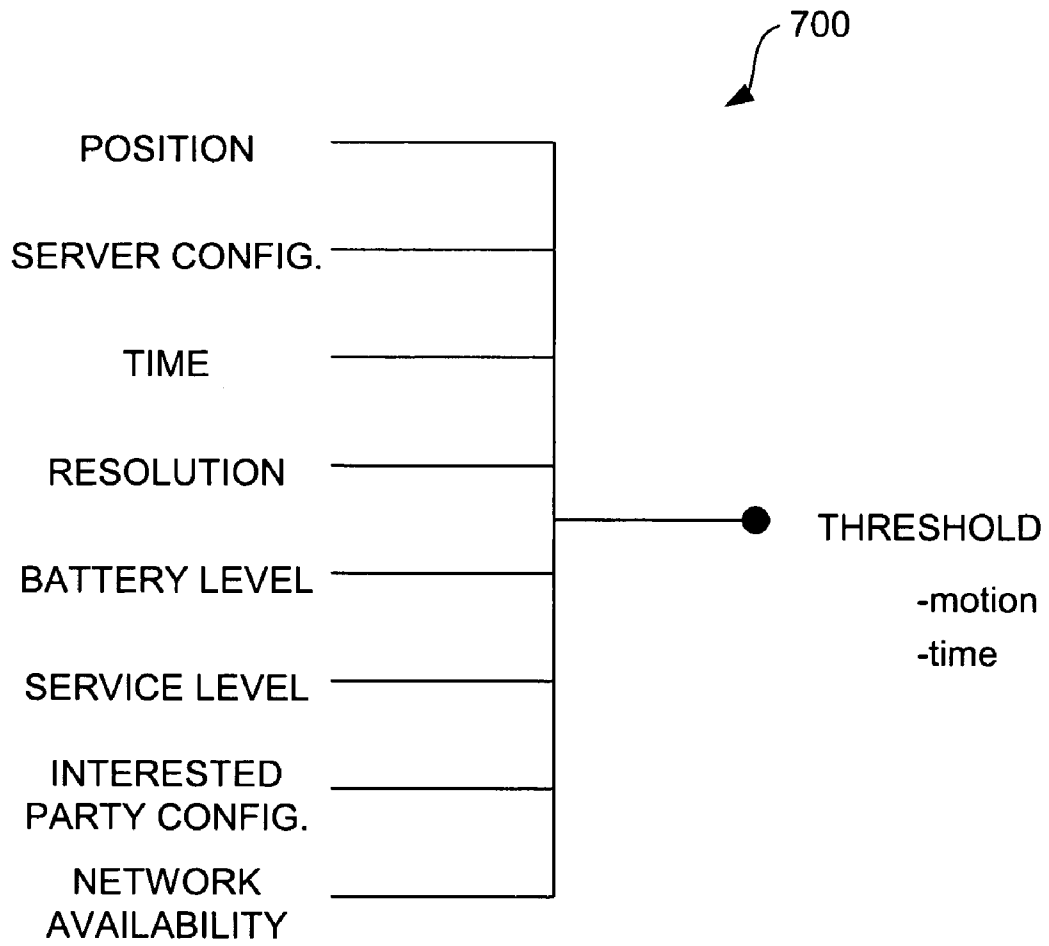


FIG. 7

1

METHOD AND APPARATUS FOR INTELLIGENT ACQUISITION OF POSITION INFORMATION

CROSS REFERENCE TO RELATED APPLICATIONS

This application claims benefit of: (i) U.S. Provisional Patent Application No. 60/444,198, filed Jan. 30, 2003, and entitled "SYSTEM, METHOD AND APPARATUS FOR ACQUIRING, PRESENTING, MONITORING, DELIVERING, MANAGING AND USING STATUS INFORMATION," which is hereby incorporated herein by reference; (ii) U.S. Provisional Patent Application No. 60/418,491, filed Oct. 15, 2002, and entitled "SYSTEM, METHOD AND APPARATUS FOR ACQUIRING, PRESENTING, MONITORING, DELIVERING, MANAGING AND USING STATUS INFORMATION," which is hereby incorporated herein by reference; (iii) U.S. Provisional Patent Application No. 60/404,645, filed Aug. 19, 2002, and entitled "SYSTEM, METHOD AND APPARATUS FOR ACQUIRING, PRESENTING, MONITORING, DELIVERING, MANAGING AND USING POSITION AND OTHER INFORMATION," which is hereby incorporated herein by reference; and (iv) U.S. Provisional Patent Application No. 60/375,998, filed Apr. 24, 2002, and entitled "SYSTEM, METHOD AND APPARATUS FOR ACQUIRING, PRESENTING, MANAGING AND USING POSITION INFORMATION," which is hereby incorporated herein by reference.

This application is also related to: (i) U.S. patent application Ser. No. 10/397,472, filed Mar. 26, 2003, and entitled "METHODS AND APPARATUS TO ANALYZE AND PRESENT LOCATION INFORMATION;" (ii) U.S. patent application Ser. No. 10/397,637, filed Mar. 26, 2003, and entitled "METHOD AND SYSTEM FOR PROVIDING SHIPMENT TRACKING AND NOTIFICATIONS;" (iii) U.S. patent application Ser. No. 10/397,641, filed Mar. 26, 2003, and entitled "METHOD AND SYSTEM FOR PERSONALIZED MEDICAL MONITORING AND NOTIFICATIONS THEREFOR;" (iv) U.S. patent application Ser. No. 10/397,640, filed Mar. 26, 2003, and entitled "INEXPENSIVE POSITION SENSING DEVICE;" (v) U.S. patent application Ser. No. 10/397,474, filed Mar. 26, 2003, and entitled "METHOD AND SYSTEM FOR ENHANCED MESSAGING;" (vi) U.S. patent application Ser. No. 10/397,512, filed Mar. 26, 2003, and entitled "APPLICATIONS OF STATUS INFORMATION FOR INVENTORY MANAGEMENT.

BACKGROUND OF THE INVENTION

1. Field of the Invention

The present invention relates to position detection and, more particularly, to improved techniques for acquisition of position information.

2. Description of the Related Art

Position determining devices have become popular for motor vehicle or vessel navigation. Typically, these devices utilize the global availability of Global Positioning Systems (GPS). These device can be dedicated to particular vehicles or vessels. More recently, these position determining devices (often known as GPS receivers) have become portable.

Unfortunately, these devices, if standalone, are battery operated and not typically designed to be able to monitor position over a long duration of time. More particularly, because these devices require frequent radio-frequency

2

communications, computational processing and information display, they consume large amounts of power and thus their battery life is limited. Also, these devices remain relatively expensive and have a relatively large form factor.

As a result, conventional position determining devices are not suitable for use in many applications due to their power consumption. Thus, there is a need for position determining devices that have reduced power consumption. It would be further advantageous if position determining devices were smaller and less expensive.

SUMMARY OF THE INVENTION

Broadly speaking, the invention relates to improved methods and systems for position acquisition and/or monitoring. The position acquisition and/or monitoring can be performed with improved intelligence so that data acquisition, transmission and/or processing is reduced, which provides improved power efficiency.

According to one embodiment of the invention, a portable position acquisition apparatus can include one or more components that have a low-power state which can be used to reduce power consumption of the position acquisition apparatus. According to another aspect of the invention, the position acquisition can be performed dependent on one or more of motion information, at least one battery level characteristic of a battery, and a change in position. According to still another aspect of the invention, the acquired position information can be transmitted to a remote device (e.g., central server) dependent on one or more of motion information, at least one battery level characteristic of a battery, and a change in position. According to still yet another aspect of the invention, a portable, battery-powered position acquisition apparatus is used to acquire position information and a solar panel provides electrical charge to its battery.

The invention can be implemented in numerous ways including, a method, system, device, apparatus, and a computer readable medium. Several embodiments of the invention are discussed below.

As a portable position acquisition apparatus, one embodiment of the invention includes at least: a position detection unit that detects position information pertaining to the position acquisition apparatus; a memory that stores the position information; a motion monitoring unit that monitors motion of the position acquisition apparatus; and a controller operatively connected to the position detection unit, the memory and the motion monitoring unit, the controller dynamically determines how frequent the position information is reacquired by the position detection unit based on at least the motion identified by the motion monitoring unit.

As a portable position acquisition apparatus, another embodiment of the invention includes at least: a battery for providing power to the position acquisition apparatus, the battery have a battery level characteristic; a position detection unit that detects position information pertaining to the position acquisition apparatus; a memory that stores the position information; and a controller operatively connected to the battery, the position detection unit, and the memory, the controller dynamically determines how frequent the position information is reacquired by the position detection unit based on at least the battery level characteristic of the battery.

As a portable position acquisition apparatus, still another embodiment of the invention includes at least: a position detection unit that detects position information pertaining to the position acquisition apparatus; a memory that stores the

position information; a communication interface that enables the position acquisition apparatus to transmit the position information to a remote device; and a controller operatively connected to the position detection unit, the memory and the communication interface, the controller determines whether the position information acquired by the position detection unit is to be transmitted to the remote device via the communication interface based on whether the position information substantially differs from prior position information.

As a portable position acquisition apparatus, still another embodiment of the invention includes at least: a battery for providing power to the position acquisition apparatus; a solar panel operatively connected to the battery to provide electrical charge to the battery; a position detection unit that detects position information pertaining to the position acquisition apparatus; a memory that stores the position information; a communication interface that enables the position acquisition apparatus to transmit the position information to a remote device; and a controller operatively connected to the position detection unit, the memory and the communication interface, the controller controls acquisition of the position information via the position detection unit as well as transmission of the position information to the remote device via the communication interface.

Other aspects and advantages of the invention will become apparent from the following detailed description taken in conjunction with the accompanying drawings which illustrate, by way of example, the principles of the invention.

BRIEF DESCRIPTION OF THE DRAWINGS

The invention will be readily understood by the following detailed description in conjunction with the accompanying drawings, wherein like reference numerals designate like structural elements, and in which:

FIG. 1 is a block diagram of a location monitoring system according to one embodiment of the invention.

FIG. 2 illustrates a block diagram of a mobile device according to one embodiment of the invention.

FIG. 3 is a flow diagram of location request processing according to one embodiment of the invention.

FIG. 4 is a flow diagram of location monitoring processing according to one embodiment of the invention.

FIG. 5 is a flow diagram of power managed position monitoring according to one embodiment of the invention.

FIG. 6 is a flow diagram of power managed position monitoring according to another embodiment of the invention.

FIG. 7 illustrates an exemplary diagram of dynamic threshold dependency.

DETAILED DESCRIPTION OF THE INVENTION

The invention relates to improved methods and systems for position acquisition and/or monitoring. The position acquisition and/or monitoring can be performed with improved intelligence so that data acquisition, transmission and/or processing is reduced, which provides improved power efficiency.

According to one embodiment of the invention, a portable position acquisition apparatus can include one or more components that have a low-power state which can be used to reduce power consumption of the position acquisition apparatus. According to another aspect of the invention, the position acquisition can be performed dependent on one or

more of motion information, at least one battery level characteristic of a battery, and a change in position. According to still another aspect of the invention, the acquired position information can be transmitted to a remote device (e.g., central server) dependent on one or more of motion information, at least one battery level characteristic of a battery, and a change in position. According to still yet another aspect of the invention, a portable, battery-powered position acquisition apparatus is used to acquire position information and a solar panel provides electrical charge to its battery.

In the following description, numerous specific details are set forth in order to provide a thorough understanding of the present invention. However, it will become obvious to those skilled in the art that the invention may be practiced without these specific details. The description and representation herein are the common meanings used by those experienced or skilled in the art to most effectively convey the substance of their work to others skilled in the art. In other instances, well-known methods, procedures, components, and circuitry have not been described in detail to avoid unnecessarily obscuring aspects of the present invention.

Reference herein to “one embodiment” or “an embodiment” means that a particular feature, structure, or characteristic described in connection with the embodiment can be included in at least one embodiment of the invention. The appearances of the phrase “in one embodiment” in various places in the specification are not necessarily all referring to the same embodiment, nor are separate or alternative embodiments mutually exclusive of other embodiments. Further, the order of blocks in process flowcharts or diagrams representing one or more embodiments of the invention do not inherently indicate any particular order nor imply any limitations in the invention.

Embodiments of the invention are discussed below with reference to FIGS. 1–7. However, those skilled in the art will readily appreciate that the detailed description given herein with respect to these figures is for explanatory purposes as the invention extends beyond these limited embodiments.

FIG. 1 is a block diagram of a location monitoring system **100** according to one embodiment of the invention. The location monitoring system **100** operates to monitor the location of mobile devices using a Global Positioning System (GPS). The location monitoring system **100** includes one or more mobile devices **102**. The mobile devices **102** can receive position information from a GPS satellite **104**. The mobile devices **102** also communicate through a wireless link to a base station **106**. The base station **106** in turn can couple to a location monitoring server **108** through a public network **110**. As an example, the public network **110** can include the Internet, a wide area network (WAN), or a local area network (LAN). The location monitoring server **108** typically couples to a location database **112** which serves to store location information for the mobile devices **102**.

The location monitoring system **100** also permits a viewer machine **114** to interact with the location monitoring server **108** through the public network **110**. In this regard, a user of the viewer machine **114** is able to interact with the location monitoring server **108** to retrieve the location (or position) information for one or more of the mobile devices **102** using the location data stored in the location database **112**. Typically, such location information that is retrieved from the location database **112** is forwarded from the location monitoring server **108** through the public network **110** to the viewer machine **114** where it can be reviewed by the user of the viewer machine **114**. As one example, the viewer

machine **114** can be a computer, such as a personal computer. Note that the term viewer machine **114** is used in a general sense. In other words, the process of accessing location information at the viewer machine **114** is not limited to visual viewing by way of a screen display. For example, a user can review (receive) such information through audio means (e.g., voice).

Since the mobile devices **102** are mobile in nature, and thus battery powered, the tracking of the location of the mobile devices **102** can impose a power consumption difficulty for the mobile devices **102**. Each time one of the mobile devices **102** captures and forwards its location to the location monitoring server **108**, electronic charge from its battery is consumed for such location monitoring purposes. Hence, although the location monitoring system **100** desires to monitor the location of the mobile devices **102** on a frequent basis (e.g., at all times, limited times, periodically, on-demand), the mobile devices **102** themselves should not be unduly burdened with respect to power consumption for such purposes. According to one aspect of the invention, the mobile devices **102** operate to conserve power consumption while still permitting consistent location monitoring.

The mobile devices **102** are typically hand-held devices that operate under battery control. The mobile devices **102** incorporate location detection circuitry but can also include other circuitry to support other functions associated with the mobile devices **102**. For example, the mobile devices **102** can further operate as cameras, cellular phones, portable digital assistants (PDAs), or portable computers.

FIG. 2 illustrates a block diagram of a mobile device **200** according to one embodiment of the invention. The mobile device **200** is, for example, suitable for use as the mobile device **102** illustrated in FIG. 1.

The mobile device **200** includes a controller **202** that controls the overall operation of the mobile device. The mobile device **200** provides at least location acquisition circuitry but may also include voice communication circuitry and/or data communication circuitry. Voice communication circuitry is typically found in mobile devices that operate as mobile telephones. The data communications are typically provided by mobile devices that operate to permit wireless data transfer to and from the mobile device. As shown in FIG. 2, the mobile device **200** includes circuitry for monitoring its location (or position). Although not shown in FIG. 2, additional circuitry, such as for voice or data communication or data processing, can be provided within the mobile device **200**.

In one embodiment, the location acquisition circuitry of the mobile device **200** includes a GPS receiver **204**. The GPS receiver **204** is utilized to receive GPS signals that are sent by a GPS satellite (such as the GPS satellite **104** illustrated in FIG. 1). The GPS receiver **204** can be controlled by the controller **202** to determine when a mobile device **200** should be receiving GPS information. When the GPS receiver **204** receives the GPS information (e.g., signals received to determine pseudo ranges) from the GPS satellite, the GPS information is typically processed by the controller **202** to produce location information. The location information is then stored by the controller **202** to a position storage unit **206**. The position storage unit **206** can be a data storage device (e.g., RAM or ROM). As examples, the data storage device can be a register, semiconductor data storage, optical data storage, or magnetic data storage. It should be noted that the GPS receiver **204** can, more generally, be considered a position detection unit.

The mobile device **200** is powered by a battery **208** that is typically rechargeable. A motion monitoring unit **210** is

also provided in the mobile device **200**. The motion monitoring unit **210** couples to the controller **202** to provide motion information to the controller **202**. The motion information is able to be determined based on one or a plurality of criteria that are monitored at the mobile device via the motion monitoring unit **210**. Examples of such criteria include: acceleration, vibration, force, speed, and direction.

The motion monitoring unit **210** can be formed or constructed in a number of ways. In one embodiment, the motion monitoring unit **210** uses a micro-machined structure to sense motion. Accelerometers are known in the art and suitable for use as the motion monitoring unit **210**. See, e.g., Dinsmore sensors available from Robson Company, Inc. of Erie, Pa. Various other types of sensors besides accelerometers can be additionally or alternatively used in sensing the criteria (e.g., vibration, force, speed, and direction) used in determining motion. For particularly low power designs, the one or more sensors used can be largely mechanical.

In one embodiment, by reducing the frequency at which the GPS receiver **204** is required to request, receive and resolve GPS information, the mobile device **200** is able to save power and thus extend the useful life of the battery **208**. Further, the reduction in use of the GPS receiver **204** also operates to reduce the demands on wireless network bandwidth in transmitting and managing such location information.

In another embodiment, the motion monitoring unit **210** enables the GPS receiver **204** to remain in a low-power state (such as a sleep state) until an updated location for the mobile device **200** is needed. In other words, the motion monitoring unit **210** can monitor the motion of the mobile device **200** such that if only minimal motion of the mobile device **200** has been detected since the last location of the mobile device **200** was obtained utilizing the GPS receiver **204**, then the controller **202** can assume (e.g., estimate) that the location of the mobile device **200** is substantially the same and thus need not wake-up (i.e., transition to normal power state) the GPS receiver **204** to acquire and process new GPS information. As a result, the GPS receiver **204** can remain in its low-power state and the controller **202** need not perform computations to resolve the GPS information to location information.

The mobile device **200** also includes a communication interface **212** and a RF transceiver **214**. The communication interface **212** and the RF transceiver **214** enable the mobile device **200** to communicate with a central station, such as the base station **106** illustrated in FIG. 1. Hence, the mobile device **200** is able to wirelessly communicate with the base station **106** to provide location information to the base station **106**, which then forwards the location information to the location monitoring server **108** for storage.

In general, the motion monitoring unit **210** serves to provide motion information to the controller **202**. The motion information can be merely a control signal from the motion monitoring unit **210**, or more complicated signals or data (e.g., position). Processing of the motion information can be performed at the controller **202**, though processing could have additionally or alternatively have been performed at the motion monitoring unit **210**. In any case, in one embodiment, the motion information can be used by the controller **202** to determine the degree of motion. For example, the controller **202** can measure the relative motion of the mobile device **200**, such as with respect to a previous position. As another example, the motion monitoring unit **210** and/or the controller **202** can accumulate the motion of the mobile device **200** with respect to a specific previous position or status.

In one embodiment, the motion monitoring unit **210** or the controller **202** can use more than one type of criteria to identify the motion of the mobile device **200**. For example, both the acceleration and speed information across a duration of time can be used to determine the distance the mobile device **200** has traveled. In yet another example, the distance the mobile device **200** has traveled can incorporate direction information. Just to illustrate, assume the mobile device **200** has traveled north at a constant speed for 10 meters and then changes 180 degrees and traveled south at the same speed for 10 meters. The mobile device **200** can sense different types of motion, e.g., speed and change of direction. The motion monitoring unit **210** and/or the controller **202** can perform calculations to determine whether the mobile device **200** has any net movement.

FIG. 3 is a flow diagram of location request processing **300** according to one embodiment of the invention. The location request processing **300** is, for example, performed by a mobile device, such as the mobile device **102** illustrated in FIG. 1 or the mobile device **200** illustrated in FIG. 2.

The location request processing **300** begins with a decision **302** that determines whether a location request has been received from a requestor. When the decision **302** determines that a location request has not yet been received, the location request processing **302** awaits such a request. When the decision **302** determines that a location request has been received, then motion information for the mobile device is obtained **304**. For example, the motion information can be obtained from the motion monitoring unit **210** illustrated in FIG. 2. The motion information can, for example, pertain to an accumulation of motion during a time period or can pertain to a maximum motion during a time period. Motion refers to one or a combination of physical conditions on a mobile device, such as acceleration, velocity, force, vibration, etc.

Next, a decision **306** determines whether the motion is greater than a threshold amount. When the decision **306** determines that the motion is greater than a threshold amount, then the GPS receiver of the mobile device is powered-up **308**. A current location for the mobile device is then determined **310** using the GPS receiver. Typically, the GPS receiver will obtain GPS information and a controller (or processor) will process the GPS information to produce a current location (or position). After the current location has been determined **310**, the GPS receiver can be powered-down **312**. Here, the GPS receiver is returned to a low-power state so as to conserve power. As an example, the low-power state (or powered-down state) can be a sleep mode or it can be a disabled mode. The current location is then saved **314**. As an example, the current location can be saved **314** to a local storage unit, such as the position storage unit **206** illustrated in FIG. 2. The current location can be transmitted **316** to an appropriate destination. Typically, the current location would be transmitted to a location monitoring server (e.g., location monitoring server **108**), and then transmitted as a data communication to the requestor, if the requestor is a remote requestor.

The current location could be transmitted separately or as a group or a batch of locations. For example, the mobile device could store the current locations and the time for such locations in the position storage unit and then transmit a group of such locations to the location monitoring server (e.g., location monitoring server **108**) when needed, when convenient or when the position storage unit is nearly full. Here, the position storage unit is able to provide buffering of the locations. Alternatively or additionally, the current location could be sent to the requestor's device. Further, the

current location could also be sent in a background mode if the mobile device supports other communications, for example, Short Message Service (SMS) messaging or voice communications.

On the other hand, when the decision **306** determines that the motion is not greater than the threshold, then the last location for the mobile device is retrieved **318**. Typically, the last location would be retrieved from the local storage unit, such as the position storage unit **206** illustrated in FIG. 2. The current location for the mobile device is then set **320** to the last location. In other words, the current location is set to be the same as the previous location for the mobile device. Thereafter, the operation **316** can be performed to transmit the current location to the location monitoring server and/or the requestor.

Additionally, if desired, the use of a prior location or last location as the current location could be further restricted such that a location could time-out. For example, if it has been more than some time duration (e.g. 24 hours) since a last location was obtained using the GPS receiver, such location could be deemed "stale". Then the request processing **300** could activate the GPS receiver and determine a current location with operations **308–316** even though the motion for the mobile device has not exceeded the threshold.

FIG. 4 is a flow diagram of location monitoring processing **400** according to one embodiment of the invention. The location monitoring processing **400** begins with a decision **402** that determines whether a timer has expired. When the decision **402** determines that the timer has not yet expired, then the location monitoring processing **400** awaits such an event. In other words, the location monitor processing **400** is invoked on a periodic basis to check the location for a mobile device. Alternatively, the location monitor processing **400** could be invoked on an event basis other than time, such as a motion event, though this embodiment is discussed with reference to a timer event.

When the decision **402** determines that a timer event has occurred, then motion information is obtained **404**. The motion information can be accumulated during an interval or merely a maximum motion indication during an interval, or some other motion criteria. A decision **406** then determines whether the motion is greater than a threshold. When the decision **406** determines that the motion is greater than the threshold, the GPS receiver is powered-up **408**. Then, the current location is determined **410** using the GPS receiver. After the current location has been determined **410**, the GPS receiver is powered-down **412**. The current location is saved **414**. Alternatively, when the decision **406** determines that the motion is not greater than the threshold, then the operations **408–414** are bypassed such that the motion information is utilized to avoid having to again determine a location when the amount of movement has been insufficient to cause a substantial change in location. In which case, power consumption by the GPS receiver and the processing of location information is able to be substantially reduced such that battery life is prolonged. After the operation **414**, or its being bypassed, the location monitor processing **400** is complete and ends.

It should be noted that the determination of the current location at operation **410** could utilize simply GPS information received from the GPS receiver, or need not fully resolve the location of the mobile device (e.g., pseudo ranges) or some partially processed variant therefrom.

The location monitor processing **400** is suitable for around-the-clock type monitoring of the location of a mobile device. The motion criteria and the low power maintenance of the GPS receiver allow the mobile device to significantly

reduce its power consumption while still providing constant location monitoring. The location monitor processing **400** is also suitable for use in having the mobile device “push” its location when it has changed (even though not being requested by a requester). For example, the mobile device could “push” its location when a threshold condition is exceeded.

Additional power management approaches can be utilized in conjunction or in combination with those for the use of the GPS receiver. Still further, in addition to utilizing a low-power state for the GPS receiver and the use of motion information, other techniques can be utilized. For example, with respect to FIG. 4, if periodically polled, the polling frequency can be decreased if the battery charge is deemed low. For example, if the battery for the mobile device has gotten rather low, it needs recharged. However, since the battery is already low, the polling frequency could be decreased such that the lifetime of the battery can be extended in the event that the battery is not recharged promptly. In one embodiment, the duration of a timer can be extended to decrease the pooling frequency. Likewise, the threshold level could be varied depending on battery level. Further, the amount of processing performed with respect to the GPS information received from the GPS receiver and/or its resolution can be minimally processed at the mobile device to save power. Also, in the event that the location information needs to be further processed, such processing could be performed at a centralized or remote site such as the location monitoring server. Also, as noted above, the sending of the location data can be done more efficiently, such as in groups or batches, or in a background mode. Still further, the polling frequency could be increased to gather more location information if the motion information indicates that the mobile device is undergoing a high degree of motion.

FIG. 5 is a flow diagram of power managed position monitoring **500** according to one embodiment of the invention. The power managed position monitoring **500** can, for example, be performed by the mobile device **200** shown in FIG. 2, which can be used as a position monitoring apparatus.

The power managed position monitoring **500** begins with a decision **502** that determines whether a motion event has occurred. When the decision **502** determines that a motion event has not occurred, a decision **504** determines whether a time event has occurred. When the decision **504** determines that a time event has not occurred, then the power managed position monitoring **500** returns to repeat the decision **502** and subsequent operations. In other words, the power managed position monitoring **500** is effectively invoked when a motion event has occurred or a time event has occurred. In one implementation, the time event can be set to a lengthy delay such as 24 hours so that a time event occurs every 24 hours which guarantees that one position will be obtained on a 24 hour basis regardless of motion. In one implementation, the motion event is triggered based on a threshold level. The threshold level can be dynamically changed or selected based on various conditions.

When the decision **502** determines that a motion event has occurred or when the decision **504** determines that a time event has occurred, the positioning detection unit of the position monitoring apparatus is activated **506**. Then, using a position detection unit, position information is acquired **508**. Thereafter, the position detection unit is deactivated **510**. Here, in order to conserve power, the position detection unit remains inactive, which can pertain to powered-off, disabled, sleep, hibernate, or other low power mode. It is

only when position information is to be acquired that the position detection unit is activated.

Next, a decision **512** determines whether a substantial position change has occurred. Here, the position information that has been acquired **508** is compared to a prior position information that was previously acquired. When the difference in position indicates that there has been no substantial position change, then a decision **514** determines whether a time event has occurred. Here, the time event can provide a fail safe such that a position is obtained once during the period provided by the time event regardless of change in position. Here, the time event can be the same time event or a different time event than that used with the decision **504**. When the decision **514** determines that a time event has not occurred, then the power managed position monitoring **500** returns to repeat the decision **502** and subsequent operations.

On the other hand, when the decision **512** determines that a substantial position change has occurred or when the decision **514** determines that a time event has occurred, then additional processing is carried out to transmit the position information to a remote device. More particularly, a communication module of the position monitoring apparatus is activated **516**. Then, the position information is transmitted **518** to a remote device. Typically, the remote device provides centralized storage and processing for position information pertaining to a plurality of position monitoring apparatuses. After the position information has been transmitted **518**, the communication module is deactivated **520**. Here, in order to conserve power, the communication module remains inactive, which can pertain to powered-off, disabled, sleep, hibernate, or other low power mode. It is only when position information is to be transmitted (or received) from a remote device that the communication module is activated. Following the operation **520**, the power managed position monitoring **500** returns to repeat the decision **502** and subsequent operations so that subsequent motion events and time events can be similarly processed.

The power managed position monitoring **500** indicates that the position detection unit and the communication module of the position monitoring apparatus can be maintained in a low-power state until such circuitry is needed. This results in a substantial savings in power consumption by the position monitoring apparatus. Further, the position monitoring apparatus is thus suitable for long term, constant (e.g., 24/7) position monitoring. Additionally, should the position monitoring apparatus include a controller, the controller can also be set to a low-power state when position information is not being acquired or transmitted. In such a low-power state, the controller might still be able to monitor for motion events and time events and might also be capable of monitoring, or even waking itself up, when a request from a remote device is received.

FIG. 6 is a flow diagram of power managed position monitoring **600** according to another embodiment of the invention. The power managed position monitoring **600** is, for example, performed by the position monitoring apparatus **200** shown in FIG. 2.

The power managed position monitoring **600** obtains **602** a motion indication. The motion indication pertains to motion that the position monitoring apparatus has undergone. For example, the motion indication might indicate a maximum motion that has occurred during a time period or since last evaluated, or an accumulation of motion that has occurred during the time period or since last evaluated. The motion indication might pertain to an acceleration, velocity, vibration and the like. In addition, a battery level indication is obtained **604**. The battery level indication might, for

example, pertain to or depend on a charge level of the battery or a voltage level of the battery. Next, a threshold level is obtained **606** based on at least the battery level indication. Here, the threshold level to be utilized is variable depending upon at least the battery level indication.

A decision **608** determines whether the motion indication is greater than the threshold level. When the decision **608** determines that the motion indication is greater than the threshold level, the position information is acquired **610**. The position information pertains to the position monitoring apparatus. Then, the position information is transmitted **612** to a remote device. Typically, the remote device provides centralized storage and processing for position information pertaining to a plurality of position monitoring apparatuses.

Following the operation **612**, as well as following the decision **608** when the motion indication does not exceed the threshold level, a delayed period is obtained **614**. The delay period can be static or dynamic. In other words, the delay period can be fixed or the delay period can vary depending upon other considerations. In one implementation, the delay period can be varied depending upon the battery level indication. For example, if the battery level indication indicates that the battery charge is low, the delay period can be increased so as to prolong the ability of the position monitoring apparatus to monitor its position. Once the delay period is obtained **614**, the power managed position monitoring **600** delays **616** for the delay period. During the delay period the various components, modules, units or circuitry of the position monitoring apparatus can be placed in a low power state so as to preserve power during the delay period. After the delay period, the power managed position monitoring **600** returns to repeat the operation **602** and subsequent operations so that additional position information can be acquired and transmitted as appropriate.

In this embodiment, the threshold level is based on at least the battery level indication. As the battery level indication indicates that the charge of the battery is low, the threshold level for the motion indication comparison can be increased so that position information is acquired and transmitted less frequently, thereby conserving power of the battery that has limited available charge.

Although the power managed position monitoring **600** is capable of altering the threshold level based on the battery level indication as well as capable of altering the delay period based on the battery level indication or other considerations, it should be understood that, more generally, that position monitoring can be power managed using one or both of threshold level adjustment and delay period adjustment. For example, the power managed position monitoring **600** could use a static threshold level (e.g., static with respect to battery level) and alter the delay period based on the battery level indication.

FIG. 7 illustrates an exemplary diagram of dynamic threshold dependency **700**. The dynamic threshold dependency pertains to a threshold utilized by the position monitoring apparatus. For example, the threshold can be a degree of motion or an amount of time. For example, the degree of motion can pertain to a motion threshold utilized in the decision **608** of the power managed position monitoring **600** shown in FIG. 6, and the amount of time can pertain to a time threshold utilized by the operation **614** of the power managed position monitoring **600** shown in FIG. 6. As another example, the degree of motion can be used with the motion event at the decision **502** of the power managed position monitoring **500** shown in FIG. 5, and the time events at the decisions **504** and **514** of the power managed position monitoring **500** shown in FIG. 5.

In any case, the thresholds can vary or depend upon one or more various considerations. These considerations include, as illustrated in FIG. 7, one or a combination of position, server configuration, time, resolution, battery level, service level, interested party configuration, and network availability.

The threshold can vary depending upon the position of the position monitoring apparatus. Consequently, position information could be acquired more often in some positions and less often in other positions. For example, a certain part of town where the layout is quite complicated, with many closely-spaced one-way streets, might require more frequent acquisition of position information. However, a rural area may lead to less frequent acquisition of position information.

The server configuration can pertain to that configuration of a remote device (e.g., remote server) that provides centralized storage and management of position information of many position monitoring apparatuses. Here, the server configuration can control the one or more thresholds utilized so that the position information is obtained in accordance with the server configuration. Although the applications can vary, one example is that a server may want to set limits on position acquisition or transmission of remote devices.

The thresholds can also vary with time. For example, during peak use periods of the remote device, the thresholds can be higher so that less position information is acquired. This can be because during peak use periods, the bandwidth becomes limited. Also, power consumption is typically higher during peak use. This can be done by increasing the thresholds during peak time to discourage usage. In contrast, during non-peak use periods, the thresholds can be set lower. From a different perspective, the peak use can refer to the peak use of the position monitoring apparatus. Then, during certain period of time, if a user desires more frequent position information, then the thresholds can be lower during those periods so that more position information is acquired.

A resolution for the position information can be set by a remote user through the remote server and/or can be set directly on the position monitoring apparatus. For example, the position monitoring apparatus can permit a user to set a resolution, such as low, medium or high resolution. Depending upon the type of resolution being selected, the thresholds can vary so that the desired resolution can be achieved.

The battery level can affect the thresholds as noted above. Thresholds can be changed according to the type of subscriptions or service charges. For example, the system providing the capabilities of the location monitoring services may provide different service levels for the users of the system. In which case, the different service levels can signal different threshold levels. This allows those users that have agreed to utilize more expensive service levels to obtain improved, high end or better resolution position information.

Interested parties can interact with the remote device or server through a web interface. As such, interested parties can themselves request configuration or monitoring capabilities through the web interface. The interested party can change configurations to affect the threshold levels.

Still further, network availability can affect the threshold levels. For example, when network availability is low, the threshold levels can be increased. On the other hand, when network availability is high, the threshold levels could be decreased.

In one embodiment, the mobile device (mobile communication device) can include a solar panel. The solar panel can provide electrical power for the mobile device. The solar

panel can thus charge a battery used to power the mobile device and/or itself power the mobile device. When the mobile device is affixed to a person to be monitored, the solar panel can remain at least partially exposed to the outside environment so as to be able to receive light. The solar panel can be integrated with the housing of the mobile device or can be separate and coupled to the mobile device via one or more wires (e.g., a cable).

The present invention has described one or more GPS devices as to identify a location. However, the present invention is not limited to using GPS devices. In certain situations, other wireless or mobile devices can also serve as location-designating devices or position detection units, such as devices based on GSM technologies, Bluetooth or Wi-Fi technologies. Through the techniques of triangulation, these devices can also designate a location. Such triangulation techniques should be known to those skilled in the art.

As noted above, the location monitoring provided through used of the mobile devices can be used to monitor location of objects. The objects whose location is being monitored can vary with application. Examples of objects that can be monitored include people, animals (e.g., pets), articles (e.g., packages, vehicles, vessels), or other assets.

A number of embodiments have been described based on a mobile device. Generally speaking, the mobile device can be a cell phone, a personal digital assistant, a pager, camera, a personal computer or other devices with communication capabilities. The form factor of the mobile device can be small, such as wearable, pager sized or smaller, or pocket sized. Additional information on mobile devices is provided in U.S. patent application Ser. No. 10/397,640, filed concurrently herewith, and entitled "INEXPENSIVE POSITION SENSOR," which is hereby incorporated herein by reference.

The above-described systems, devices, methods and processes can be used together with other aspects of a monitoring system, including the various aspects described in: (i) U.S. Provisional Patent Application No. 60/444,198, filed Jan. 30, 2003, and entitled "SYSTEM, METHOD AND APPARATUS FOR ACQUIRING, PRESENTING, MONITORING, DELIVERING, MANAGING AND USING STATUS INFORMATION," which is hereby incorporated herein by reference; (ii) U.S. Provisional Patent Application No. 60/418,491, filed Oct. 15, 2002, and entitled "SYSTEM, METHOD AND APPARATUS FOR ACQUIRING, PRESENTING, MONITORING, DELIVERING, MANAGING AND USING STATUS INFORMATION," which is hereby incorporated herein by reference; (iii) U.S. Provisional Patent Application No. 60/404,645, filed Aug. 19, 2002, and entitled "SYSTEM, METHOD AND APPARATUS FOR ACQUIRING, PRESENTING, MONITORING, DELIVERING, MANAGING AND USING POSITION AND OTHER INFORMATION," which is hereby incorporated herein by reference; and (iv) U.S. Provisional Patent Application No. 60/375,998, filed Apr. 24, 2002, and entitled "SYSTEM, METHOD AND APPARATUS FOR ACQUIRING, PRESENTING, MANAGING AND USING POSITION INFORMATION," which is hereby incorporated herein by reference.

The various embodiments, implementations, features and aspects of the invention noted above (including those incorporated by reference) can be combined in various ways or used separately. Those skilled in the art will understand from the description that the invention can be equally applied to or used in other various different settings with respect to various combinations, embodiments, implementations or features provided in the description herein.

The invention can be implemented in software, hardware or a combination of hardware and software. The invention, or at least certain software portions of the invention, can also

be embodied as computer readable code on a computer readable medium. The computer readable medium is any data storage device that can store data which can thereafter be read by a computer system. Examples of the computer readable medium include read-only memory, random-access memory, CD-ROMs, magnetic tape, optical data storage devices, and carrier waves. The computer readable medium can also be distributed over network-coupled computer systems so that the computer readable code is stored and executed in a distributed fashion.

The advantages of the invention are numerous. Different embodiments or implementations may yield different advantages. One advantage of the invention is that position information can be acquired in a power efficient manner. Another advantage of the invention is that position monitoring can be achieved over an extended period. Still another advantage of the invention is that position information of objects being monitored can be centrally maintained and available through access to a website (e.g., monitoring server). Yet another advantage of the invention is that position monitoring apparatus can be inexpensive and have a small form factor, and thus be suitable for many uses.

The many features and advantages of the present invention are apparent from the written description, and thus it is intended by the appended claims to cover all such features and advantages of the invention. Further, since numerous modifications and changes will readily occur to those skilled in the art, it is not desired to limit the invention to the exact construction and operation as illustrated and described. Hence, all suitable modifications and equivalents may be resorted to as falling within the scope of the invention.

What is claimed is:

1. A portable position acquisition apparatus, comprising: a position detection unit that detects position information pertaining to said position acquisition apparatus; a memory that stores the position information; a motion monitoring unit that monitors motion of said position acquisition apparatus; and a controller operatively connected to said position detection unit, said memory and said motion monitoring unit, said controller determines how frequent the position information is reacquired by said position detection unit based on at least the motion identified by said motion monitoring unit as compared to a first threshold amount, the first threshold amount being adjustable while or after said position acquisition apparatus is placed in use by an interested party.
2. A portable position acquisition apparatus as recited in claim 1, wherein said position detection unit has at least a low-power state and a normal power state, and wherein said position detection unit remains in the low-power state while position information is not being acquired.
3. A portable position acquisition apparatus as recited in claim 1, wherein said position acquisition apparatus further comprises a battery for providing power to said position acquisition apparatus.
4. A portable position acquisition apparatus as recited in claim 3, wherein said position detection unit has at least a low-power state and a normal power state, and wherein said position detection unit remains in the low power state while position information is not being acquired, whereby power of the battery is conserved when said position detection unit is in the low-power state.
5. A portable position acquisition apparatus as recited in claim 1, wherein said position acquisition apparatus further comprises:
 - a communication interface that enables said position acquisition apparatus to transmit data to a remote device via a wireless channel.

15

6. A portable position acquisition apparatus as recited in claim 5, wherein the data being transmitted includes at least the position information.

7. A portable position acquisition apparatus as recited in claim 5, wherein said communication interface transmits the position information to the remote device only when the position information differs from prior position information by at least a second threshold amount.

8. A portable position acquisition apparatus as recited in claim 7, wherein the second threshold amount is user configurable or dynamic based on a condition of said position acquisition apparatus.

9. A portable position acquisition apparatus as recited in claim 5,

wherein said communication interface has at least a normal power state and a low-power state, and wherein, when the position information differs from prior position information by at least a second threshold amount, said communication interface transitions to the normal power state and then transmits the position information to the remote device.

10. A portable position acquisition apparatus as recited in claim 9, wherein after said communication interface transmits the position information to the remote device, said communication interface transitions to the low-power state.

11. A portable position acquisition apparatus as recited in claim 9, wherein said position detection unit is disabled or placed in a sleep mode when in the low-power state.

12. A portable position acquisition apparatus as recited in claim 1, wherein said position acquisition apparatus further comprises:

a battery for providing power to said position acquisition apparatus, and

wherein said controller determines how frequent the position information is reacquired by said position detection unit based on at least both the motion identified by said motion monitoring unit and a battery level characteristic of said battery.

13. A portable position acquisition apparatus as recited in claim 1, wherein the first threshold amount is dependent on at least one setting or condition associated with said position acquisition apparatus other than motion.

14. A portable position acquisition apparatus as recited in claim 13, wherein said motion monitoring unit comprises a micro-machined motion indicator.

15. A portable position acquisition apparatus as recited in claim 13, wherein said motion monitoring unit comprises a mechanical device.

16. A portable position acquisition apparatus as recited in claim 1, wherein said portable position acquisition apparatus is powered by a battery, and

wherein said portable position acquisition apparatus further comprises a solar panel that provides electrical charge to said portable position acquisition apparatus.

17. A portable position acquisition apparatus as recited in claim 16, wherein said solar panel provides electrical charge to said battery.

18. A portable position acquisition apparatus as recited in claim 1,

wherein said position acquisition apparatus further comprises:

a communication interface that enables said position acquisition apparatus to transmit data to a remote device via a wireless channel,

wherein the position information is processed by said controller to produce processed position information, and

wherein the processed position information is transmitted to the remote device **10** said communication interface.

16

19. A portable position acquisition apparatus as recited in claim 1, wherein the motion identified by said motion monitoring unit includes at least one of an acceleration indication, a velocity indication and a vibration indication.

20. A portable position acquisition apparatus as recited in claim 1, wherein said position detection unit comprises a GPS receiver.

21. A portable position acquisition apparatus as recited in claim 1, wherein said position detection unit is one or more of wearable, pager sized or smaller, and pocket sized.

22. A portable position acquisition apparatus, comprising: a position detection unit that detects position information pertaining to a position of said position acquisition apparatus;

a memory that stores the position information;

a communication interface that enables said position acquisition apparatus to transmit the position information to a remote device; and

a controller operatively connected to said position detection unit, said memory and said communication interface, said controller determines whether the position information acquired by said position detection unit is to be transmitted to the remote device via said communication interface based on whether the position differs from a prior position by at least a threshold amount that is more than just the fact that the apparatus is moving,

wherein said communication interface has at least a normal power state and a low-power state, and

wherein, when the position differs from the prior position by at least the threshold amount, said communication interface transitions to the normal power state and then transmits the position information to the remote device.

23. A portable position acquisition apparatus as recited in claim 22, wherein the prior position information is previously transmitted position information.

24. A portable position acquisition apparatus as recited in claim 22, wherein the threshold amount is user configurable or dynamic based on a condition of said position acquisition apparatus.

25. A portable position acquisition apparatus as recited in claim 22, wherein after said communication interface transmits the position information to the remote device, said communication interface transitions to the low-power state.

26. A portable position acquisition apparatus as recited in claim 22, wherein said position detection unit is disabled or placed in a sleep mode when in the low-power state.

27. A portable position acquisition apparatus, comprising: a battery for providing power to said position acquisition apparatus;

a solar panel operatively connected to said battery to provide electrical charge to said battery;

a position detection unit that detects position information pertaining to said position acquisition apparatus;

a memory that stores the position information;

a communication interface that enables said position acquisition apparatus to transmit the position information to a remote device; and

a controller operatively connected said position detection unit, said memory and said communication interface, said controller controls acquisition of the position information via said position detection unit in accordance with a first threshold as well as transmission of the position information to the remote device via said communication interface in accordance with a second threshold.

28. A portable position acquisition apparatus as recited in claim 27, wherein at least one of the first and second thresholds is configurable or dynamic.

17

29. A portable position acquisition apparatus as recited in claim 27, wherein at least one of the first and second thresholds is configurable or dynamic based on one or a combination of position, server configuration, time, resolu-

18

tion, battery level, service level, interested party configuration, and network availability.

* * * * *

UNITED STATES PATENT AND TRADEMARK OFFICE
CERTIFICATE OF CORRECTION

PATENT NO. : 6,975,941 B1
APPLICATION NO. : 10/397473
DATED : December 13, 2005
INVENTOR(S) : Lau et al.

Page 1 of 1

It is certified that error appears in the above-identified patent and that said Letters Patent is hereby corrected as shown below:

Col. 16, line 51, change "electrical change" to -- electrical charge --.

Signed and Sealed this

Fourth Day of March, 2008

A handwritten signature in black ink that reads "Jon W. Dudas". The signature is written in a cursive style with a large, stylized initial "J".

JON W. DUDAS
Director of the United States Patent and Trademark Office