



US007809377B1

(12) **United States Patent**
Lau et al.

(10) **Patent No.:** **US 7,809,377 B1**
(45) **Date of Patent:** **Oct. 5, 2010**

(54) **METHOD AND SYSTEM FOR PROVIDING SHIPMENT TRACKING AND NOTIFICATIONS**

(75) Inventors: **Chung Lau**, Sunnyvale, CA (US); **C. Douglass Thomas**, Campbell, CA (US)

(73) Assignee: **IpVenture, Inc.**, Los Altos, CA (US)

(*) Notice: Subject to any disclaimer, the term of this patent is extended or adjusted under 35 U.S.C. 154(b) by 781 days.

(21) Appl. No.: **11/732,581**

(22) Filed: **Apr. 3, 2007**

Related U.S. Application Data

(63) Continuation of application No. 10/397,637, filed on Mar. 26, 2003, now Pat. No. 7,212,829, which is a continuation-in-part of application No. 09/797,517, filed on Feb. 28, 2001, now Pat. No. 7,366,522.

(60) Provisional application No. 60/185,480, filed on Feb. 28, 2000, provisional application No. 60/375,998, filed on Apr. 24, 2002, provisional application No. 60/404,645, filed on Aug. 19, 2002, provisional application No. 60/418,491, filed on Oct. 15, 2002, provisional application No. 60/444,198, filed on Jan. 30, 2003.

(51) **Int. Cl.**
H04W 24/00 (2009.01)

(52) **U.S. Cl.** **455/456.1**; 455/456.3; 455/404.2; 455/414.2; 455/440; 340/539.13; 340/825.49; 340/988; 701/213; 701/214; 701/215

(58) **Field of Classification Search** 455/456.1, 455/456.2, 456.3, 404.2, 414.2, 440; 340/536.13, 340/825.49, 988; 342/357.01, 357.06, 357.07, 342/357.13, 457; 701/213, 214, 215
See application file for complete search history.

(56) **References Cited**

U.S. PATENT DOCUMENTS

5,389,934 A 2/1995 Kass

(Continued)

FOREIGN PATENT DOCUMENTS

EP 0 874 529 A2 10/1998

(Continued)

OTHER PUBLICATIONS

Office Action for U.S. Appl. No. 10/397,637, dated Sep. 29, 2006.

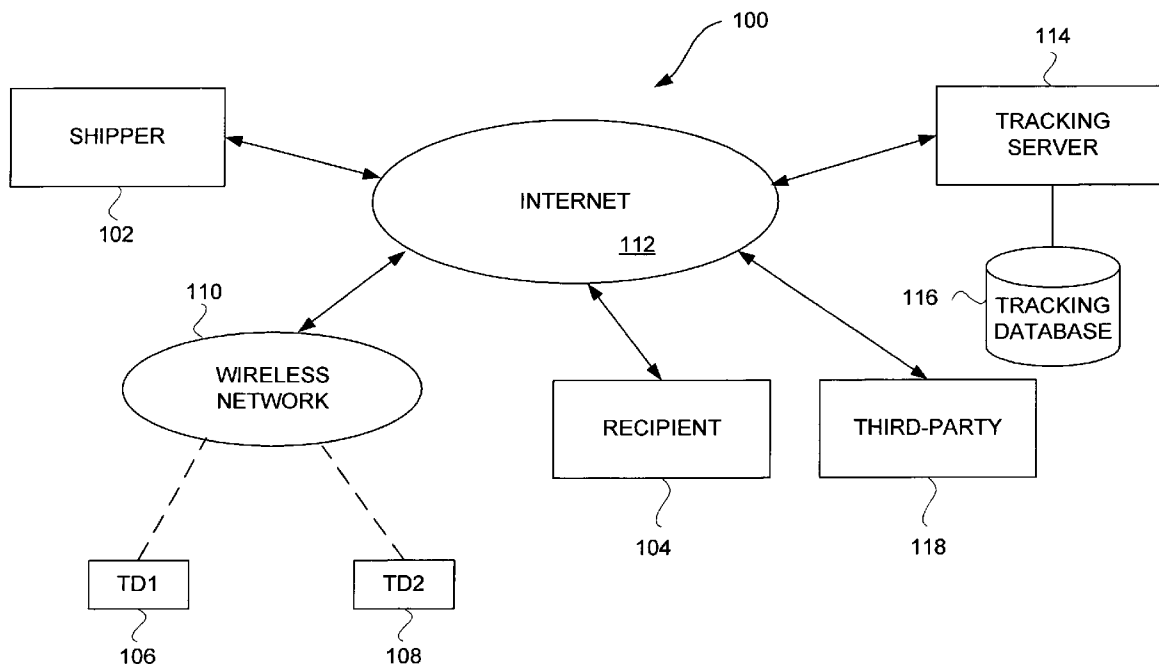
(Continued)

Primary Examiner—Quynh H Nguyen

(57) **ABSTRACT**

Improved approaches for monitoring status of articles being shipped are disclosed. The monitoring can produce notifications to interested parties. The notifications typically contain status information pertaining to the articles being shipped. Alternatively, interested parties can gain access to status information pertaining to the articles being shipped via a website. According to one embodiment, the status information includes at least position (location) information and shipping conditions information.

17 Claims, 9 Drawing Sheets



U.S. PATENT DOCUMENTS					
5,400,020 A	3/1995	Jones et al.	6,199,045 B1	3/2001	Giniger et al.
5,461,365 A	10/1995	Schlager et al.	6,226,622 B1	5/2001	Dabbieri
5,491,486 A	2/1996	Welles, II et al.	6,231,519 B1	5/2001	Blants et al.
5,512,902 A	4/1996	Guthrie et al.	6,232,916 B1	5/2001	Grillo et al.
5,515,858 A	5/1996	Myllymaki	6,236,358 B1	5/2001	Durst et al.
5,528,247 A	6/1996	Nonami	6,238,337 B1	5/2001	Kambhatla et al.
5,528,518 A	6/1996	Bradshaw et al.	6,198,390 B1	6/2001	Schlager et al.
5,539,748 A	7/1996	Raith	6,198,431 B1	6/2001	Gibson
5,541,845 A	7/1996	Klein	6,243,039 B1 *	6/2001	Elliot 342/457
5,550,551 A	8/1996	Alesio	6,243,660 B1	6/2001	Hsu et al.
5,568,119 A	10/1996	Schipper et al.	6,246,376 B1	6/2001	Bork et al.
5,570,412 A	10/1996	LeBlanc	6,263,280 B1	7/2001	Stingone, Jr.
5,576,716 A	11/1996	Sadler	6,278,936 B1	8/2001	Jones
5,592,173 A	1/1997	Lau et al.	6,282,362 B1	8/2001	Murphy et al.
5,623,260 A	4/1997	Jones	6,292,687 B1	9/2001	Lowell et al.
5,629,678 A	5/1997	Gargano et al.	6,298,306 B1	10/2001	Suarez et al.
5,652,570 A	7/1997	Lepkofker	6,300,875 B1	10/2001	Schafer
5,673,692 A	10/1997	Schulze et al.	6,302,844 B1	10/2001	Walker et al.
5,710,551 A	1/1998	Ridgeway	6,314,308 B1	11/2001	Sheynblat et al.
5,712,619 A	1/1998	Simkin	6,317,049 B1	11/2001	Toubia et al.
5,731,757 A	3/1998	Layson et al.	6,323,807 B1	11/2001	Golding et al.
5,731,788 A	3/1998	Reeds	6,324,213 B1	11/2001	Harrison
5,742,233 A	4/1998	Hoffman et al.	6,327,533 B1	12/2001	Chou
5,751,245 A	5/1998	Janky et al.	6,331,817 B1	12/2001	Goldberg
5,771,001 A	6/1998	Cobb	6,339,397 B1	1/2002	Baker
5,774,876 A	6/1998	Woolley et al.	6,340,928 B1	1/2002	McCurdy
5,797,091 A	8/1998	Clise et al.	6,342,847 B1	1/2002	Archuleta et al.
RE35,920 E	10/1998	Sorden et al.	6,349,257 B1	2/2002	Liu et al.
5,826,195 A	10/1998	Westerlage et al.	6,353,390 B1	3/2002	Beri et al.
5,835,907 A	11/1998	Newman	6,353,798 B1	3/2002	Green et al.
5,841,352 A	11/1998	Prakash	6,356,841 B1	3/2002	Hamrick et al.
5,844,862 A	12/1998	Cocatre-Zilgien	6,362,778 B2	3/2002	Neher
5,850,196 A	12/1998	Mowers	6,363,254 B1	3/2002	Jones et al.
5,883,594 A	3/1999	Lau	6,363,323 B1	3/2002	Jones
5,889,770 A	3/1999	Jokiaho et al.	6,373,430 B1	4/2002	Beason et al.
5,948,043 A	9/1999	Mathis	6,377,810 B1	4/2002	Geiger et al.
5,959,575 A	9/1999	Abbott	6,388,612 B1	5/2002	Neher
5,959,577 A *	9/1999	Fan et al. 342/357.13	6,404,352 B1	6/2002	Ichikawa et al.
5,963,130 A	10/1999	Schlager et al.	6,407,698 B1	6/2002	Ayed
5,982,285 A *	11/1999	Bueche et al. 340/573.1	6,411,892 B1	6/2002	Van Diggelen
5,991,690 A	11/1999	Murphy	6,411,899 B2	6/2002	Dussell et al.
5,995,849 A	11/1999	Williams et al.	6,421,538 B1	7/2002	Byrne
6,002,363 A	12/1999	Krasner	6,426,719 B1	7/2002	Nagareda et al.
6,002,982 A	12/1999	Fry	6,427,120 B1	7/2002	Garin et al.
6,009,319 A	12/1999	Khullar et al.	6,430,602 B1	8/2002	Kay et al.
6,013,007 A	1/2000	Root et al.	6,433,732 B1	8/2002	Dutta et al.
6,014,080 A	1/2000	Layson, Jr.	6,441,778 B1	8/2002	Durst et al.
6,014,090 A	1/2000	Rosen et al.	6,442,380 B1	8/2002	Mohindra
6,023,241 A	2/2000	Clapper	6,443,890 B1	9/2002	Schulze et al.
6,032,051 A	2/2000	Hall et al.	6,445,937 B1	9/2002	daSilva
6,034,622 A	3/2000	Levine	6,453,237 B1	9/2002	Fuchs et al.
6,054,928 A	4/2000	Lemelson	6,466,821 B1	10/2002	Pianca et al.
6,064,336 A	5/2000	Krasner	6,469,639 B2	10/2002	Tanenhaus et al.
6,067,018 A	5/2000	Skelton et al.	6,471,087 B1	10/2002	Shusterman
6,067,044 A	5/2000	Whelan et al.	6,478,736 B1	11/2002	Mault
6,072,396 A	6/2000	Gaukel	6,513,532 B2	2/2003	Mault et al.
6,078,290 A	6/2000	McBurney et al.	6,522,871 B1	2/2003	Patrick et al.
6,083,248 A	7/2000	Thompson	6,522,889 B1	2/2003	Aarnio
6,083,353 A	7/2000	Alexander	6,529,164 B1	3/2003	Carter
6,094,168 A	7/2000	Duffett-Smith et al.	6,544,193 B2	4/2003	Abreu
6,100,806 A	8/2000	Gaukel	6,552,652 B2	4/2003	Beken
6,115,595 A	9/2000	Rodal et al.	6,559,620 B2	5/2003	Zhou et al.
6,131,067 A	10/2000	Girerd et al.	6,569,094 B2	5/2003	Suzuki et al.
6,141,570 A	10/2000	O'Neili, Jr. et al.	6,579,231 B1	6/2003	Phipps
6,144,303 A	11/2000	Federman	6,625,437 B1 *	9/2003	Jampolsky et al. 455/405
6,148,280 A	11/2000	Kramer	6,640,085 B1	10/2003	Chatzipetros et al.
6,163,696 A	12/2000	Bi et al.	6,650,907 B1	11/2003	Kamperschroer et al.
6,171,264 B1	1/2001	Bader	6,679,071 B1	1/2004	Storey et al.
6,172,640 B1	1/2001	Durst et al.	6,721,542 B1	4/2004	Anttila et al.
6,175,616 B1	1/2001	Light et al.	6,747,675 B1	6/2004	Abbott et al.
6,198,930 B1	3/2001	Schipper	6,801,853 B2	10/2004	Workman
			6,804,606 B2	10/2004	Jones
			6,847,892 B2	1/2005	Zhou et al.

6,856,804 B1 2/2005 Ciotta
 6,865,385 B1 3/2005 Kohda et al.
 6,937,900 B1 8/2005 Pianca et al.
 6,952,645 B1 10/2005 Jones
 6,975,941 B1 12/2005 Lau et al.
 6,980,826 B2 12/2005 Yamaguchi
 7,071,842 B1 7/2006 Brady, Jr.
 7,085,253 B2 8/2006 Yang
 7,136,832 B2 11/2006 Li et al.
 7,212,829 B1 5/2007 Lau et al.
 7,218,938 B1 5/2007 Lau et al.
 7,253,731 B2 8/2007 Joao
 7,321,774 B1 1/2008 Lau et al.
 7,325,061 B2 1/2008 Haruki
 7,366,522 B2 4/2008 Thomas
 7,403,972 B1 7/2008 Lau et al.
 2001/0006891 A1 7/2001 Cho
 2001/0020204 A1 9/2001 Runyon et al.
 2001/0027378 A1 10/2001 Tennison et al.
 2001/0028304 A1 10/2001 l'Anson et al.
 2001/0044299 A1 11/2001 Sandegren
 2001/0052849 A1 12/2001 Jones, Jr.
 2002/0000930 A1 1/2002 Crowson et al.
 2002/0027507 A1 3/2002 Yarin et al.
 2002/0038182 A1 3/2002 Wong et al.
 2002/0050945 A1 5/2002 Tsukishima et al.
 2002/0057192 A1 5/2002 Eagleson et al.
 2002/0063622 A1 5/2002 Armstrong et al.
 2002/0071677 A1 6/2002 Sumanaweera
 2002/0077080 A1 6/2002 Greene
 2002/0087260 A1 7/2002 Hancock et al.
 2002/0087619 A1 7/2002 Tripathi
 2002/0094067 A1 7/2002 August
 2002/0111171 A1 8/2002 Boesch et al.
 2002/0111819 A1 8/2002 Li et al.
 2002/0115453 A1 8/2002 Poulin et al.
 2002/0119770 A1 8/2002 Twitchell, Jr.
 2002/0119789 A1 8/2002 Friedman
 2002/0193121 A1 12/2002 Nowak et al.
 2003/0003943 A1 1/2003 Bajjkar
 2003/0009410 A1 1/2003 Ramankutty et al.
 2003/0013445 A1 1/2003 Fujiwara et al.
 2003/0069759 A1 4/2003 Smith
 2003/0151507 A1 8/2003 Andre et al.
 2004/0034470 A1 2/2004 Workman
 2004/0046637 A1 3/2004 Wesby Van Swaay
 2004/0114731 A1 6/2004 Gillett et al.
 2004/0117108 A1 6/2004 Nemeth
 2004/0233065 A1* 11/2004 Freeman 340/825.49
 2006/0173444 A1 8/2006 Choy et al.
 2008/0021645 A1 1/2008 Lau et al.
 2008/0261638 A1 10/2008 Lau et al.
 2009/0042540 A1 2/2009 Bodnar et al.

FOREIGN PATENT DOCUMENTS

EP 1 037 447 A2 9/2000
 WO WO 97/41654 11/1997
 WO WO 98/01769 A1 1/1998
 WO WO 98/16045 4/1998
 WO WO 00/51391 8/2000
 WO WO 01/50151 A1 7/2001
 WO WO 02/42979 A1 5/2002
 WO WO 02/084618 A1 10/2002
 WO WO 03/012720 A1 2/2003

OTHER PUBLICATIONS

Notice of Allowance for U.S. Appl. No. 10/397,637, dated Jan. 22, 2007.
 "352C22 Miniature Low Profile ICP Accelerometer," Precision Accelerometers, PCB Piezoelectronics Products—SVS Division, webpages, pp. 1-2 (downloaded Apr. 11, 2002: www.pcb.com/products/svs/svs352c22.htm).

"Airline Cargo Containers," Case Study, RJI Incorporated, webpages, pp. 1-2 (downloaded Mar. 16, 2002: www.rji.cc/casestudies/airlinecargocounters.html).
 "Airline Food Carts," Case Study, RJI Incorporated, webpages, pp. 1-2 (downloaded Mar. 16, 2002: www.rji.cc/casestudies/airlinefoodcarts.html).
 "An Introduction to SnapTrack Server-Aided GPS Technology," SnapTrack Inc., Apr. 3, 2007.
 "Audiovox Intros GPS, Bluetooth Phone," INT Media Group, Inc. (allNetDevices), Apr. 5, 2002. (downloaded: www.allnetdevices.com/wireless/news/2001/1/15/audiovox_intros.html).
 "Carrier and end-user applications for wireless location systems," TruePosition, Inc., pp. 1-7, Apr. 3, 2007.
 "Danger -Products" and "Hiphop Communicator Brochure," Danger, Inc., downloaded Oct. 26, 2003: www.danger.com/products.php).
 "Developing a GPSs for the Global Supply Chain," Aberdeen Group, Inc., Executive White Paper, Jun. 2002.
 "Devices for Text Messages in Deutsche Telekom's fixed network have already found their way into many households," Deutsche Telekom AG, Press Release, Mar. 13, 2002, pp. 1-2.
 "Digital/Analog Compass Sensors" and "1655 Digital Compass Sensor," webpages, The Robson Company, Inc., pp. 1-2 (downloaded Apr. 11, 2002: www.dinsmoresensors.com/index.html).
 "EarthTrack™ Vehicle Tracking Systems," Outfitter Satellite, Inc., 1998 (downloaded Jan. 22, 2000).
 "Enhanced Tracking," United Parcel Service of America, Inc. (UPS), webpages, pp. 1-2 (downloaded Jun. 1, 2002: www.ups.com/myupsinfo/info/etrack?pnav=stdservice).
 "Fleet Management Systems-Asset Tracking Devices," Axiom Navigation Inc., 2000-2001 (downloaded Oct. 19, 2002: www.axiomnav.com/Prod_Systems/prod_system.asp).
 "Frozen Food Warehouse," Case Study, RJI Incorporated, webpages, pp. 1-3 (downloaded Mar. 16, 2002: www.rji.cc/casestudies/frozenfoodwarehouse.html).
 "FunMail Launches on the NTT DoCoMo i-mode network," FunMail, Press Release, May 1, 2001, pp. 1-2.
 "Global Cell Phone Location," Axiom Navigation Inc., 2000-2001 (downloaded Oct. 19, 2002: www.axiomnav.com/Prod_Global/prod_global.asp).
 "Global Locating Services," SkyBitz, webpage, p. 1, (downloaded Nov. 15, 2002: www.skybitz.com/services/gls.html).
 "GLS Communicator," SkyBitz, webpages, pp. 1-2, (downloaded Nov. 15, 2002: www.skybitz.com/gls/communicator.html).
 "Guide to Tracking Info.," Nippon Express, website page, p. 1 (downloaded Jun. 9, 2002: www.nittsu.co.jp/edoc/howtoe.htm).
 "Introduction to SMS," by C. Tull of Anywhere YouGo.com, pp. 1-4 (downloaded:www.devx.com/wireless/articles/SMS/SMSIntro-asp), Apr. 3, 2007.
 "IO Data Develops GPS Adaptor for I-Mode Mobile," AsiaBixTech, Sep. 17, 2002, pp. 1-2.
 "Locate Networks: Our Service," Locate Networks, webpages, pp. 1-7 (downloaded Sep. 26, 2002: www.locatenetworks.com/).
 "MMS phones: Don't believe the hype," CNN.com/SCI-TECH, Aug. 8, 2002, pp. 1-3.
 "Mobile Location Based Services: Cell Tracking Devices of People & Thongs . . .," pp. 1-2, (downloaded Aug. 10, 2002: http://3glocate.com).
 "MonlTrack," Case Study, RJI Incorporated, webpages, pp. 1-2 (downloaded Mar. 16, 2002: www.rji.cc/technology/telematic.html).
 "MY UPS.COM Benefits," United Parcel Service of America, Inc. (UPS), webpage, p. 1 (downloaded Apr. 13, 2002: www.ups.com/myupsinfo/info/benefits?pnav=stdservice).
 "NavMate® Navigation System," Visteon Corporation, webpage, pp. 1-2 (downloaded Jun. 21, 2002: www.visteon.com/technology/automotive/navmate.html).
 "News," SkyBitz, webpages, pp. 1-8, (downloaded Nov. 15, 2002: www.skybitz.com/about/news.html).
 "Pakhound: Your Watchdog in The Shipping Industry," website pages, pp. 1-3 (downloaded Jun. 9, 2002: www.pakhound.com/fact.asp).
 "Parkwatch and Wherenet Unveil the First Amusement Visitor Locating system," ParkWatch, Press Release, Jun. 27, 2000.

- "pulver.com's Location Based Services Report," pulver.com, Inc., Oct. 2001, pp. 1-17 (downloaded Jun. 4, 2002: www.pulver.com/lbsreport/lastbsreport.02/oct01.txt).
- "Radio Frequency Identification (RFID)," Case Study, RJI Incorporated, webpage, p. 1 (downloaded Mar. 16, 2002: www.rji.cc/technology/rfid.html).
- "Real Time Location System (RTLS)," Case Study, RJI Incorporated, webpage, p. 1 (downloaded Mar. 16, 2002: www.rji.cc/technology/rtis.html).
- "Real-Time Warehouse Tracking," Case Study, RJI Incorporated, webpages, pp. 1-2 (downloaded Mar. 16, 2002: www.rji.cc/casestudies/rtwarehousetracking.html).
- "Savi Reuseable Transport Container," Savi Technology, Inc., Apr. 30, 2002, pp. 1-2.
- "Send Images to i-mode phones," Mobile Media Japan, 2001, pp. 1-3.
- "Ski Rental with Auto ID and Tracking," Case Study, RJI Incorporated, webpages, pp. 1-2 (downloaded Mar. 16, 2002: www.rji.cc/casestudies/skirentalcompany.html).
- "SnapTrack and SignalSoft Corp. Team Up to Trial Location-based Information Service for GSM Test Group," Press Release, SnapTrack Inc., Dec. 6, 1999.
- "SnapTrack Awarded Additional Key Patents for Enhanced GPS System," Press Release, SnapTrack Inc., Jan. 4, 2000.
- "Start-up crams single chip with phone, GPS and Bluetooth," CNET Network, Inc. (ZDNET), Mar. 22, 2002 (downloaded: <http://news.zdnet.co.uk/story/0,t284-x2107163,00.html>).
- "Status Icons/Messages," Yahoo! Messenger Help, Yahoo! Inc., 2002, pp. 1-2.
- "Technical Applications Of Our Current Technology," Aetherwire, webpages, pp. 1-4 (downloaded Mar. 16, 2002: www.aetherwire.com/CDROM/General/app11.html), Apr. 3, 2007.
- "The Always on Network," Position Paper, Nortel Networks, 2002.
- "Theme Park Visitors & Cashless Purchasing," Case Study, RJI Incorporated, webpages, pp. 1-2 (downloaded Mar. 16, 2002: www.rji.cc/casestudies/themepark.html).
- "Track Your FedEx Shipments via Email," FedEx, webpages, pp. 1-2 (downloaded Oct. 29, 2002: www.fedex.com).
- "Tracking Helpful Tips," United Parcel Service of America, Inc. (UPS), webpages, pp. 1-2 (downloaded Jun. 1, 2002: www.ups.com/tracking/nm_help.html).
- "Trimble and Rosum Team to Develop Universal Positioning Technology," Trimble Navigation, Inc., News Release, Feb. 27, 2003.
- "Turning Position into Knowledge," SkyBitz, webpage, p. 1, (downloaded Nov. 15, 2002: www.skybitz.com).
- "UPS Package Tracking," United Parcel Service of America, Inc. (UPS), webpages, p. 1-2 (downloaded Apr. 13, 2002: www.ups.com/tracking/tracking.html).
- "UPS Wireless Solutions," United Parcel Service of America, Inc. (UPS), webpage, p. 1 (downloaded Apr. 13, 2002: www.ups.com/myupsinfo/info/wireless?pnav=stdservice).
- "Welcome to Iship, Inc.," IShip, Inc., webpages, pp. 1-2, (downloaded Jun. 9, 2002: www.iship.com/).
- "Welcome to Traker Systems," Traker Systems, webpages, pp. 1-2 (downloaded Jun. 9, 2002: www.trakersystems.com).
- "What are Instant Messages?" Yahoo! Messenger Help, Yahoo! Inc., 2002, pp. 1.
- "What is '3G' technology?," CNN.com/SCI-TECH, Oct. 22, 2001, pp. 1-3.
- "What is a Friend List?" Yahoo! Messenger Help, Yahoo! Inc., 2002, pp. 1.
- "Wherify Wireless and SiRF Team to Deliver Child Locator System," Wherify Wireless, Inc., Press Release, Mar. 19, 2001, pp. 1-2.
- "Wherify Wireless Breakthrough in Location-Based Services," Mobilemag.com, Feb. 28, 2001, p. 1.
- "Wherify Wireless GPS Locator for Kids User Guide," Wherify Wireless, Inc., 2003, pp. 1-106.
- "Wherify Wireless Location Services," Wherify Wireless, Inc., webpages, pp. 1-5 (downloaded: Mar. 25, 2003: www.wherifywireless.com/prod_watches.htm).
- "X-GPST™—Hybrid GPS Location Server Solution," Axiom Navigation Inc., 2000-2001 (downloaded Oct. 19, 2002: www.axiomnav.com/Prod_Global/x-gps.asp).
- "Yahoo! Messenger—Sending Messages to a Mobile Phone," Yahoo! Messenger, Yahoo! Inc., 2002, pp. 1-7 (downloaded Oct. 27, 2002: [http://messenger.yahoo.com/messenger/wireless/pc2sms/tour1.html\(through/tour7.html](http://messenger.yahoo.com/messenger/wireless/pc2sms/tour1.html(through/tour7.html))).
- "Yahoo! Messenger for Text Messaging," Yahoo! Messenger, Yahoo! Inc., 2002, pp. 1-10 (downloaded Oct. 27, 2002: [http://messenger.yahoo.com/messenger/wireless/smsmsg/tour1.html\(through/tour7.html](http://messenger.yahoo.com/messenger/wireless/smsmsg/tour1.html(through/tour7.html))).
- "Yahoo! Messenger for WAP," Yahoo Messenger, Yahoo! Inc., 2002 (tours 1-9), pp. 1-17 (downloaded Oct. 27, 2002: [www.messenger.yahoo.com/messenger/wireless/wap/tour1.html\(through/tour9.html](http://www.messenger.yahoo.com/messenger/wireless/wap/tour1.html(through/tour9.html))).
- Accelerometers—General Purpose, LP Series, Crossbow Technology, Inc., data sheet, pp. 1-3 (downloaded Apr. 11, 2002: www.xbow.com/Products/Accelerometers.htm), Apr. 3, 2007.
- Bickers, "Eyes in the sky," SafeTzone Technology Corporation, webpages, 2001, pp. 1-3 (downloaded: www.safetzone.com/newsKloak.asp).
- Chertkoff, Rachel, "Vehicle Locator Systems," Pager Technology, pp. 1-2, 1998.
- Commerical Uses for LoJack (webpage), LoJack Corporation, downloaded Jan. 22, 2000.
- Crossbow Product Guide—Accelerometers, Crossbow Technology, Inc., webpages, pp. 1-3 (downloaded Apr. 11, 2002: www.xbow.com/Products/Accelerometers.htm).
- Delphi and MobileAria Demonstrate True Hands Free In-Vehicle Mobile Productivity Services At CES, Press Release, Delphi Automotive Systems, Jan. 8, 2002 (downloaded Apr. 5, 2002: www.delphiauto.com/news/pressRelease/pr6628-01082002).
- F. Rivera, "Special Report: Keeping Tabs on Your Teen," 7 News, Boston, Apr. 30, 2002, pp. 1-3.
- FedEx Insight, FedEx, webpages, pp. 1-11 (downloaded Oct. 29, 2002: www.fedex.com).
- GPS2000, Omega Research and Development, Inc., webpages, pp. 1-9 (pp. 7-9 pertain to an online tour) (downloaded Jul. 14, 2003: www.gps2000online.com).
- IMVironment, Yahoo! Inc., 2002, pp. 1-12 (downloaded (including) Oct. 27, 2002: [http://help.yahoo.com/help/us/mesg/imv/imv-01.html\(through/Index5.html](http://help.yahoo.com/help/us/mesg/imv/imv-01.html(through/Index5.html))).
- J.Wrolstad, "Chrysler Claims First With Bluetooth Mobile Phone System," Wireless Newsfactor, Oct. 26, 2001.
- K. Hill, "Prada Uses Smart Tags To Personalize Shopping," CRMDaily.com, Apr. 24, 2002., pp. 1-4.
- K. Miyake, "Sharp to unveil 3G PDA-type cell phone," ITworld.com, Inc., Jan. 11, 2002.
- Kleinknecht, William, "Juvenile authorities want satellite tracking for felons," The Star-Ledger of New Jersey, Nov. 18, 1997.
- LoadTrak, pp. 1-2 (downloaded Jun. 4, 2002: www.load-trak.com).
- Marek, "The Unstoppable Snap Track," Wireless Week, Dec. 18, 2000.
- Motorola Consumer Catalog: Pagers (webpage), Motorola, Inc., downloaded Jan. 19, 2000.
- My.Roadwayl, Roadway Express, Inc., webpages, pp. 1-2, (downloaded Jun. 9, 2002: www.quicktrak.roadway.com/cgi-bin/quicktrak).
- Packtrack™, PackTrack.com, webpages, pp. 1-2 (downloaded Jun. 9, 2002: www.packtrack.com).
- Precision Accelerometers, PCB Piezoelectronics Products—SVS Division, webpages, pp. 1-2 (downloaded Apr. 11, 2002: www.pcb.com/products/svs/Index.html).
- Rabinowitz and Spilker, Jr., "A New Positioning System Using Television Synchronization Signals," Rosum Corporation, pp. 1-11 (downloaded May 21, 2003).
- Rabinowitz and Spilker, Jr., "Positioning Using the ATSC Digital Television Signal," Rosum Corporation Whitepaper, Rosum Corporation (downloaded May 21, 2003).
- Real Time Locating System, Executive Summary, Technology Systems International, Inc. Apr. 3, 2007.
- Ryan, "Catching up with Dick Tracy," San Francisco Chronicle, news article, Mar. 18, 2002.
- SandPiper GPS Receiver, Specification sheet by Axiom Navigation Inc. (www.axiomnav.com), Apr. 3, 2007.
- Smart Antenna, Specification sheet by Axiom Navigation Inc. (www.axiomnav.com), Apr. 3, 2007.

SnapTrack—Privacy Protection (webpage), SnapTrack Inc., downloaded Jan. 19, 2000.

SnapTrack—Technology At Work (webpage), SnapTrack Inc., downloaded Jan. 19, 2000.

SnapTrack in Action (webpage), SnapTrack Inc., downloaded Jan. 19, 2000.

Stilp, Louis A., "Examining the Coming Revolution in Location Services," pp. 1-11, Apr. 3, 2007.

Swift A2 GPS Receiver, Specification sheet by Axiom Navigation Inc. (www.axiomnav.com), Apr. 3, 2007.

Swift B2 GPS Receiver, Specification sheet by Axiom Navigation Inc. (www.axiomnav.com), Apr. 3, 2007.

TruePosition Virtual Brochure (webpage), TruePosition, Inc, Apr. 3, 2007.

Wong, "Fishers, golfers join the rush to GPS," San Jose Mercury News, news article, Mar. 25, 2002.

* cited by examiner

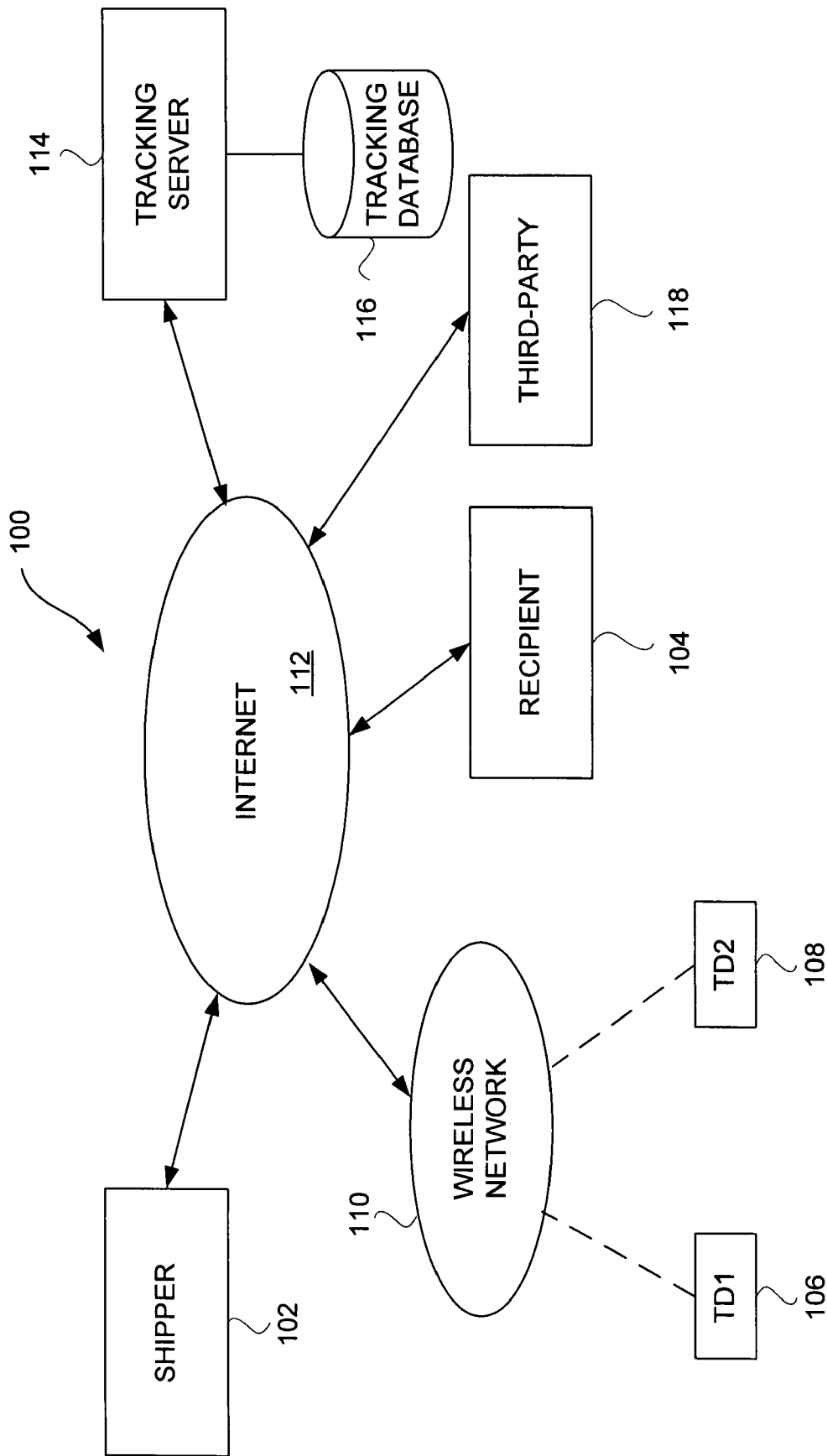


FIG. 1

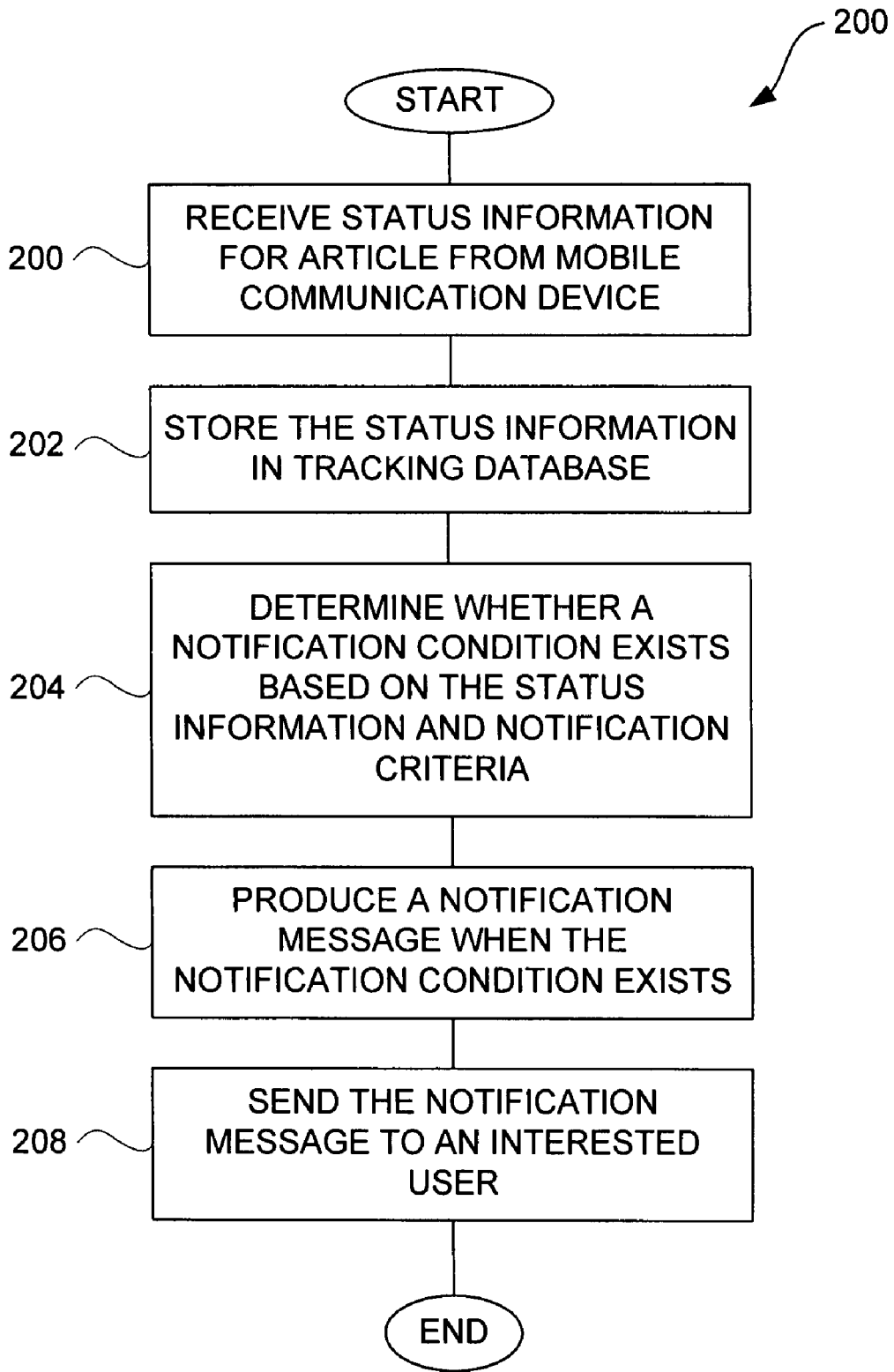
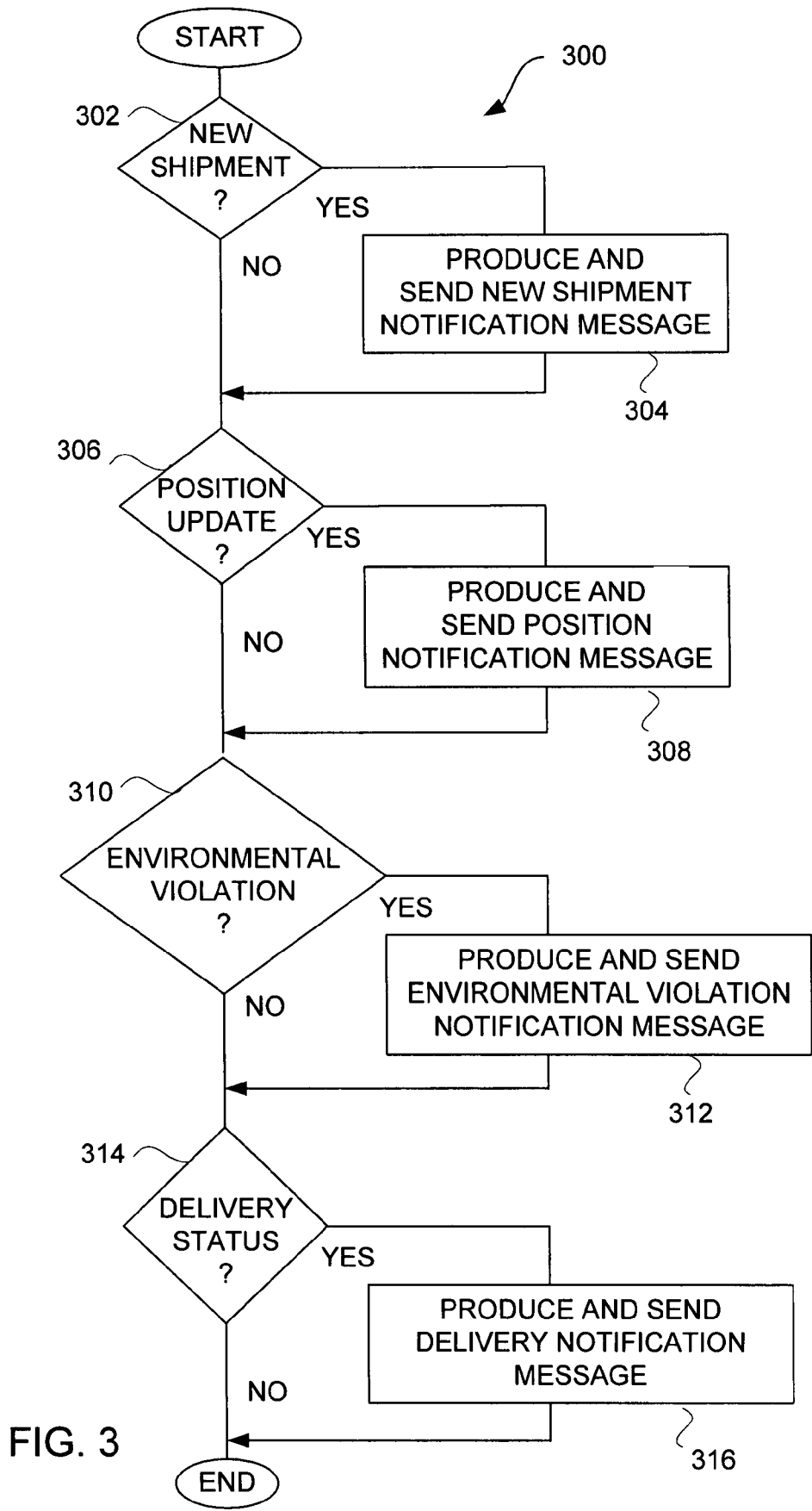


FIG. 2



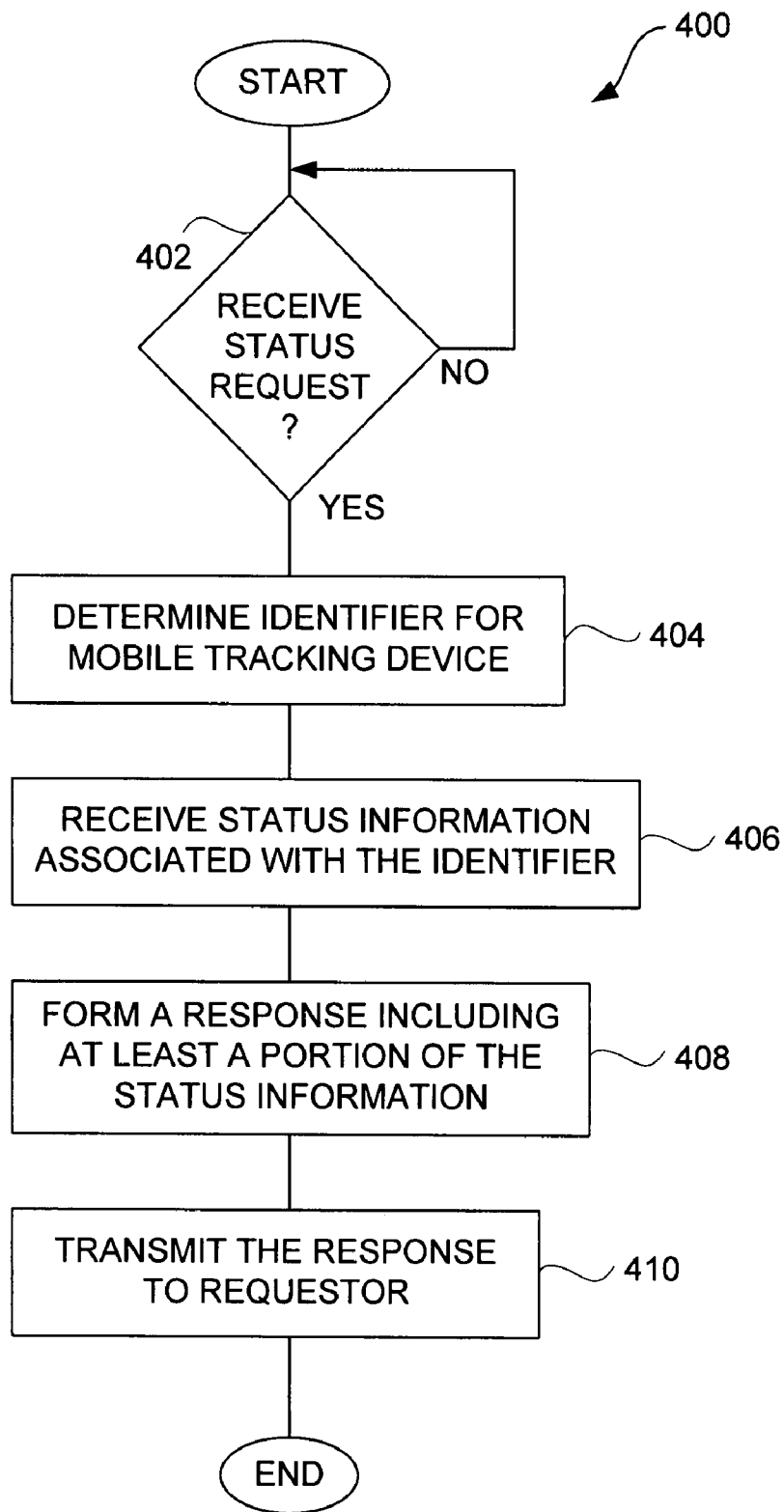


FIG. 4

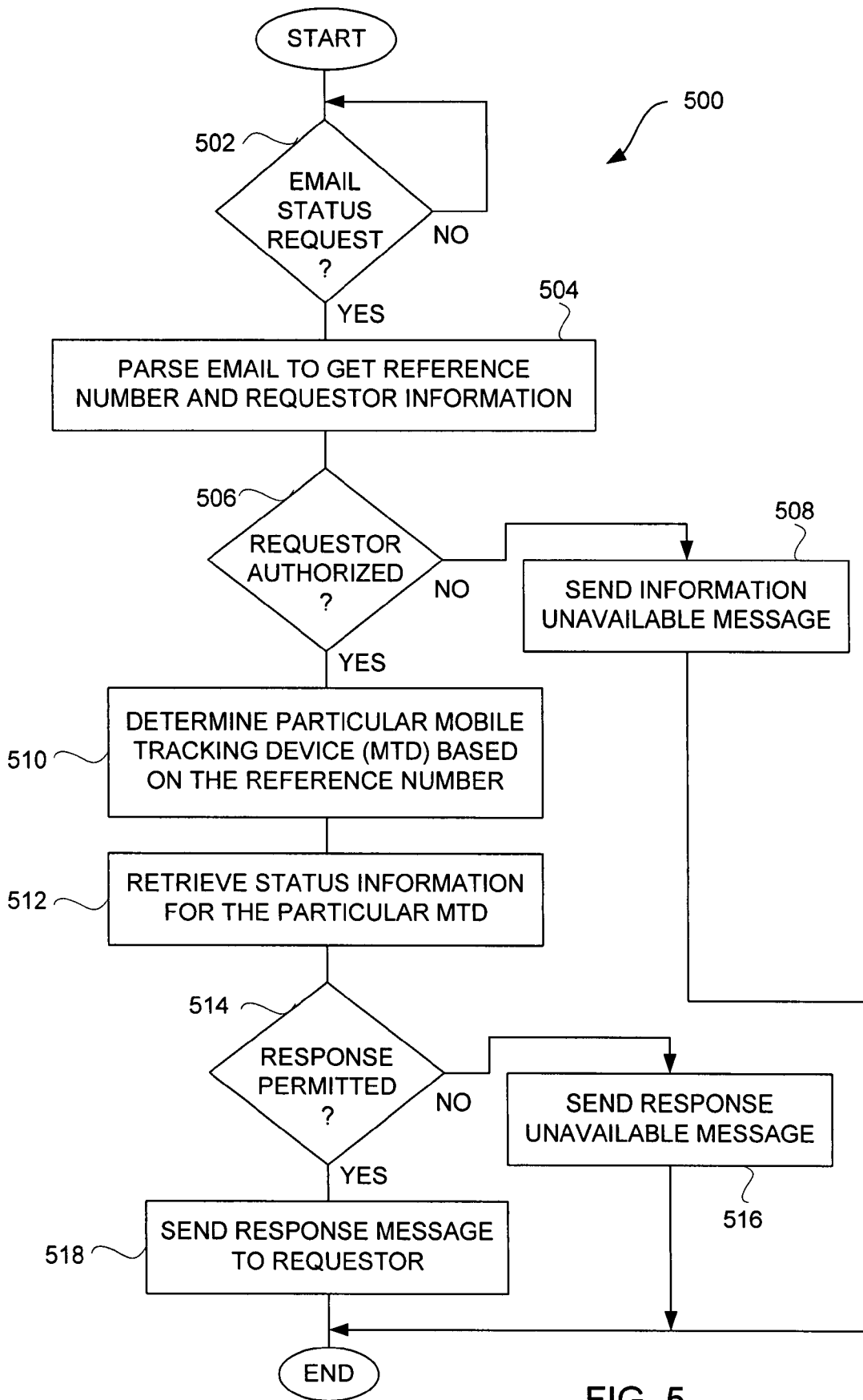


FIG. 5

600

NOTIFICATION SETUP

NOTIFICATION CHANNEL:

EMAIL PAGE FAX

602

DESTINATION(S):

604

NOTIFICATION CRITERIA: 606

POSITION

PERIODIC, EVERY DAY ▼

DISTANCE, EVERY 100 Mi ▼

ON-DELIVERY

DELIVERED IMPENDING DELIVERY

CONDITIONS

PERIODIC, EVERY DAY ▼

EXTREME CONDITIONS

TEMPERATURE > °F

FORCE > LBS

FIG. 6

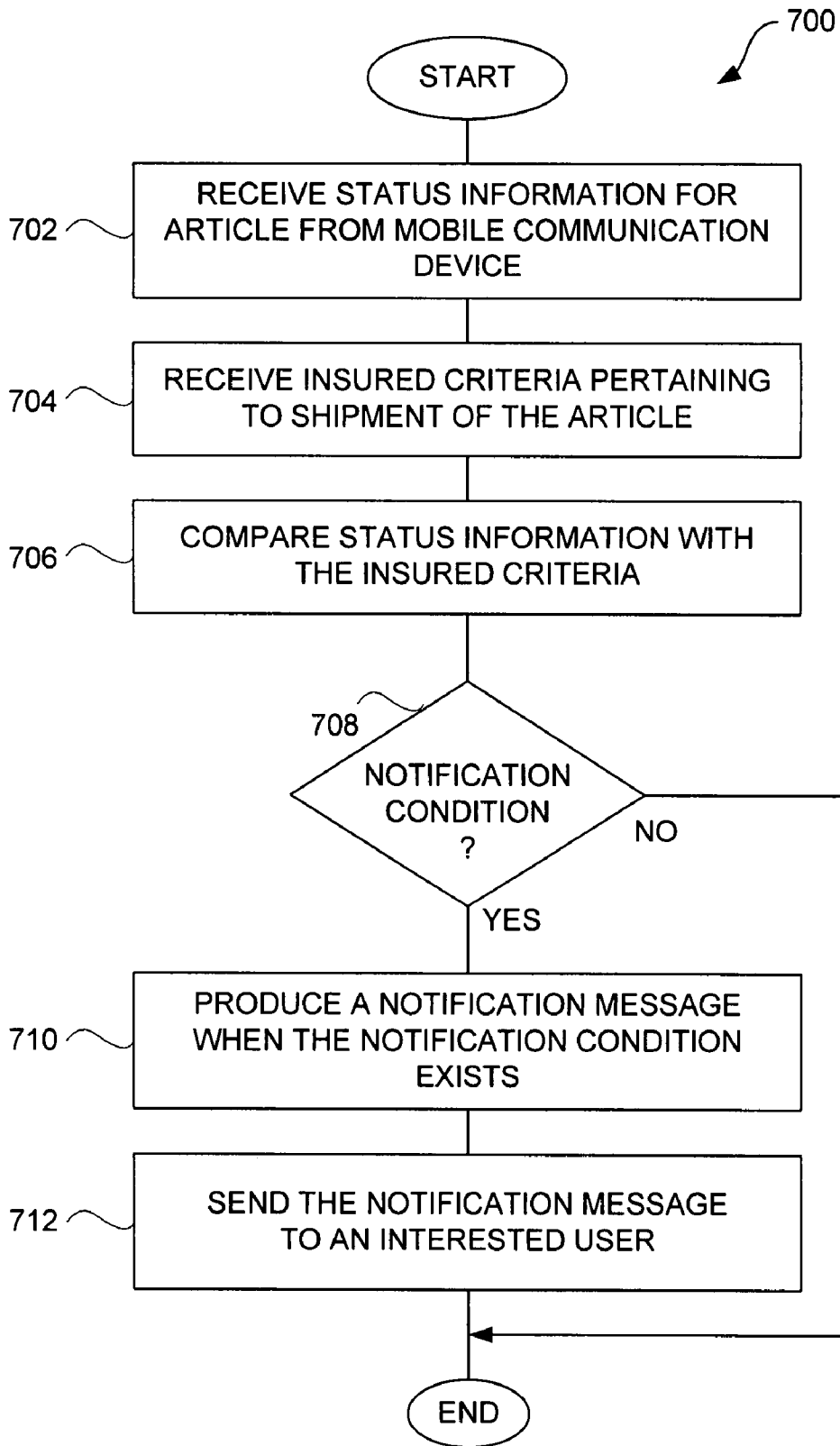


FIG. 7

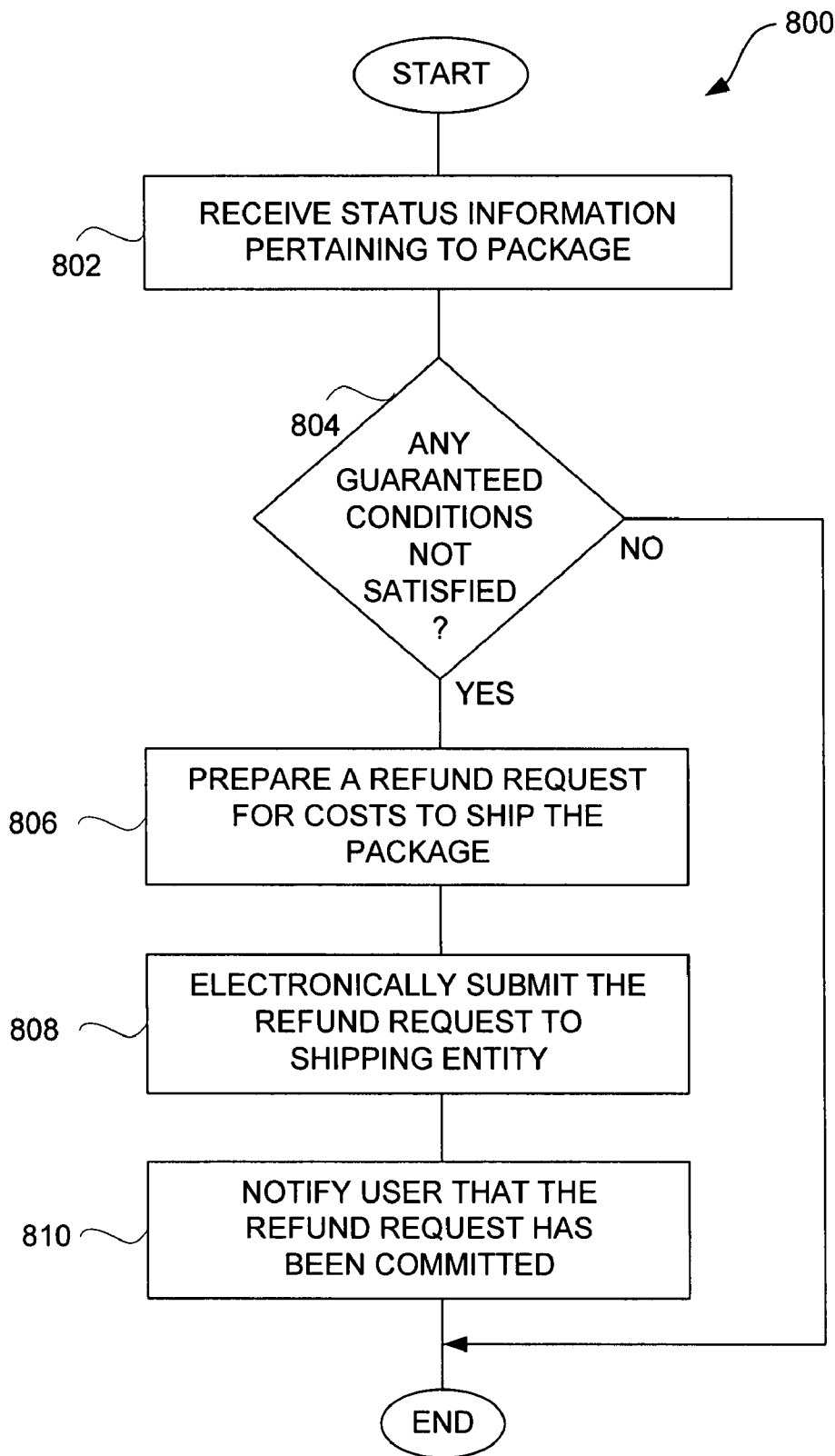


FIG. 8

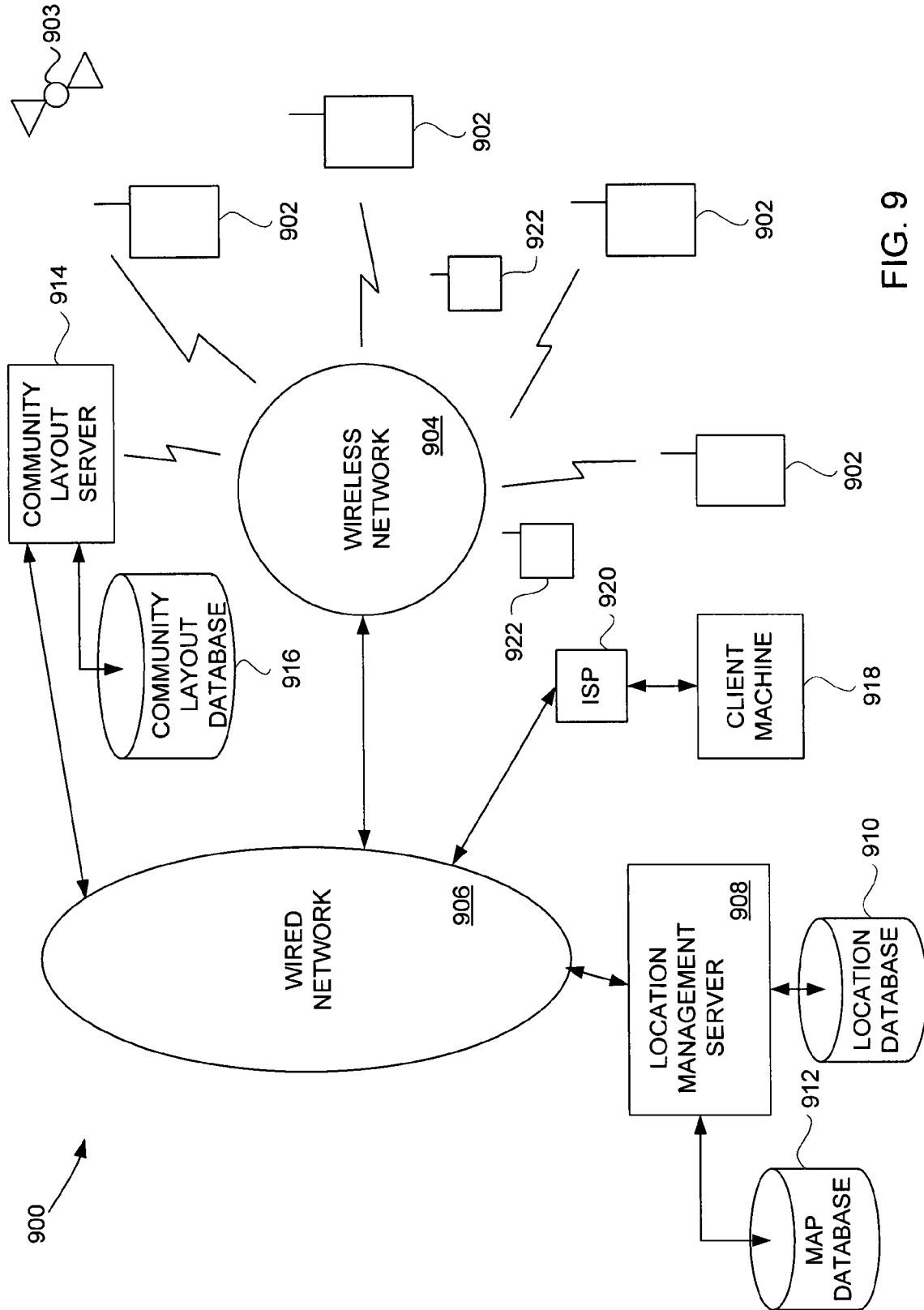


FIG. 9

METHOD AND SYSTEM FOR PROVIDING SHIPMENT TRACKING AND NOTIFICATIONS

CROSS REFERENCE TO RELATED APPLICATIONS

This application is a Continuation of U.S. patent application Ser. No. 10/397,637, filed Mar. 26, 2003, and entitled, "METHOD AND SYSTEM FOR PROVIDING SHIPMENT TRACKING AND NOTIFICATIONS," which is a Continuation-In-Part of U.S. patent application Ser. No. 09/797,517, filed Feb. 28, 2001, and entitled "METHOD AND SYSTEM FOR LOCATION TRACKING," which is hereby incorporated herein by reference, and which claims the benefit of U.S. Provisional Patent Application No. 60/185,480, filed Feb. 28, 2000, and entitled "METHOD AND SYSTEM FOR LOCATION TRACKING," which is hereby incorporated herein by reference.

By way of prior U.S. patent application Ser. No. 10/397,637, this application also claims benefit of: (i) U.S. Provisional Patent Application No. 60/444,198, filed Jan. 30, 2003, and entitled "SYSTEM, METHOD AND APPARATUS FOR ACQUIRING, PRESENTING, MONITORING, DELIVERING, MANAGING AND USING STATUS INFORMATION," which is hereby incorporated herein by reference; (ii) U.S. Provisional Patent Application No. 60/418,491, filed Oct. 15, 2002, and entitled "SYSTEM, METHOD AND APPARATUS FOR ACQUIRING, PRESENTING, MONITORING, DELIVERING, MANAGING AND USING STATUS INFORMATION," which is hereby incorporated herein by reference; (iii) U.S. Provisional Patent Application No. 60/404,645, filed Aug. 19, 2002, and entitled "SYSTEM, METHOD AND APPARATUS FOR ACQUIRING, PRESENTING, MONITORING, DELIVERING, MANAGING AND USING POSITION AND OTHER INFORMATION," which is hereby incorporated herein by reference; and (iv) U.S. Provisional Patent Application No. 60/375,998, filed Apr. 24, 2002, and entitled "SYSTEM, METHOD AND APPARATUS FOR ACQUIRING, PRESENTING, MANAGING AND USING POSITION INFORMATION," which is hereby incorporated herein by reference.

This application is also related to: (i) U.S. patent application Ser. No. 10/397,473, filed Mar. 26, 2003, and entitled "METHOD AND APPARATUS FOR INTELLIGENT ACQUISITION OF POSITION INFORMATION," now U.S. Pat. No. 6,975,941; (ii) U.S. patent application Ser. No. 10/397,472, filed Mar. 26, 2003, and entitled "METHODS AND APPARATUS TO ANALYZE AND PRESENT LOCATION INFORMATION;" (iii) U.S. patent application Ser. No. 10/397,641, filed Mar. 26, 2003, and entitled "METHOD AND SYSTEM FOR PERSONALIZED MEDICAL MONITORING AND NOTIFICATIONS THEREFOR;" (iv) U.S. patent application Ser. No. 10/397,640, filed Mar. 26, 2003, and entitled "INEXPENSIVE POSITION SENSING DEVICE;" (v) U.S. patent application Ser. No. 10/397,474, filed Mar. 26, 2003, and entitled "METHOD AND SYSTEM FOR ENHANCED MESSAGING;" (vi) U.S. patent application Ser. No. 10/397,512, filed Mar. 26, 2003, and entitled "APPLICATIONS OF STATUS INFORMATION FOR INVENTORY MANAGEMENT."

BACKGROUND OF THE INVENTION

1. Field of the Invention

The present invention relates to shipment of objects and, more particularly, to monitoring objects during shipment.

2. Description of the Related Art

Objects are regularly shipped from a sender to a recipient. The objects can be packages, containers or boxes, or items within packages, containers or boxes. However, for the most part, once an object leaves the sender and enters a shipping channel, the sender and recipient have little or no knowledge about the shipments.

Recently, shipping companies, such as Federal Express, have enabled users to track shipments using tracking numbers uniquely assigned to the objects being shipped. A user can access the FedEx.com website and retrieve tracking information about a particular package or can arrange to have such tracking information emailed to a particular email address. The tracking information can include such information as shipment date, delivery location, delivery date/time, person acknowledging receipt, and scan activity. The scan activity provides a listing of each of the locations (and date and time) during the shipment where the package was scanned. Even more recently, FedEx introduced a Web-based business tool, referred to as FedEx InSight, to help businesses manage their shipping activities. FedEx InSight is advertised as facilitating: (i) tracking inbound, outbound and third-party payor shipments; (ii) providing notifications of critical shipping events via electronic mail, facsimile, Internet or wireless means; (iii) providing status summaries of international and domestic shipments on one report; and (iv) helping to pinpoint customs delays and delivery attempts and then suggesting ways to expedite delivery.

Notwithstanding the recent advances in tracking shipments, there still exists various problems that lead to lack of understanding of shipments activity and conditions. When scanning of packages at various locations during a route of shipment is used to tracking location, personnel must manually perform such scanning. Further, the location of packages is only known at the time that the packages are scanned at certain locations (scanning locations). In shipping a package, there is a need to have more precise and robust knowledge of the position and condition of the package throughout the shipping process.

SUMMARY OF THE INVENTION

Broadly speaking, the invention relates to improved approaches for monitoring status of articles being shipped. The monitoring can produce notifications to interested parties. The notifications typically contain status information pertaining to the articles being shipped. Alternatively, interested parties can gain access to status information pertaining to the articles being shipped via a website. According to one embodiment, the status information includes at least position (location) information and shipping conditions information.

The invention can be implemented in numerous ways including, a method, system, device, graphical user interface, and a computer readable medium. Several embodiments of the invention are discussed below.

As a method for tracking location of an article, one embodiment of the invention includes at least the acts of: receiving a location of an article being tracked, the location being sent by a location-aware mobile device within or affixed to the article; determining whether a notification should be sent to a user based on the location of the article; automatically generating a notification message when said determining determines that a notification should be sent; and sending the notification message to an interested user.

As a method for tracking shipment of an article, one embodiment of the invention includes the acts of: receiving status information associated with the article, the status infor-

information being provided by a mobile communication device within or affixed to the article; determining whether a notification condition exists based on the status information and at least one notification criterion; producing a notification message when the notification condition exists; and sending the notification message to an interested user.

As a method for tracking a package, one embodiment of the invention includes at least the acts of: placing a mobile communication device into the package or affixed to the package; tracking status information of the package by automated communications between the mobile communication device and an Internet package tracking site, the status information including at least position information and shipping conditions information; subsequently accessing the Internet package tracking site to retrieve the status information of the package; and presenting the status information of the package to an authorized representative.

Other aspects and advantages of the invention will become apparent from the following detailed description taken in conjunction with the accompanying drawings which illustrate, by way of example, the principles of the invention.

BRIEF DESCRIPTION OF THE DRAWINGS

The invention will be readily understood by the following detailed description in conjunction with the accompanying drawings, wherein like reference numerals designate like structural elements, and in which:

FIG. 1 is a block diagram of an article shipment notification system according to one embodiment of the invention.

FIG. 2 is a flow diagram of article shipment notification processing according to one embodiment of the invention.

FIG. 3 is a flow diagram of notification message processing according to one embodiment of the invention.

FIG. 4 is a flow diagram of requested notification processing according to one embodiment of the invention.

FIG. 5 is a flow diagram of email status processing according to one embodiment of the invention.

FIG. 6 is a representative notification setup screen according to one embodiment of the invention.

FIG. 7 is a flow diagram of insurance compliance processing according to one embodiment of the invention.

FIG. 8 is a flow diagram of refund processing according to one embodiment of the invention.

FIG. 9 is a block diagram of an object tracking system according to one embodiment of the invention.

DETAILED DESCRIPTION OF THE INVENTION

The invention relates to improved approaches for monitoring status of articles being shipped. The monitoring can produce notifications to interested parties. The notifications typically contain status information pertaining to the articles being shipped. Alternatively, interested parties can gain access to status information pertaining to the articles being shipped via a website. According to one embodiment, the status information includes at least position (location) information and shipping conditions information.

In the following description, numerous specific details are set forth in order to provide a thorough understanding of the present invention. However, it will become obvious to those skilled in the art that the invention may be practiced without these specific details. The description and representation herein are the common meanings used by those experienced or skilled in the art to most effectively convey the substance of their work to others skilled in the art. In other instances, well-known methods, procedures, components, and circuitry

have not been described in detail to avoid unnecessarily obscuring aspects of the present invention.

Reference herein to “one embodiment” or “an embodiment” means that a particular feature, structure, or characteristic described in connection with the embodiment can be included in at least one embodiment of the invention. The appearances of the phrase “in one embodiment” in various places in the specification are not necessarily all referring to the same embodiment, nor are separate or alternative embodiments mutually exclusive of other embodiments. Further, the order of blocks in process flowcharts or diagrams representing one or more embodiments of the invention do not inherently indicate any particular order nor imply any limitations in the invention.

Embodiments of this aspect of the invention are discussed below with reference to FIGS. 1-9. However, those skilled in the art will readily appreciate that the detailed description given herein with respect to these figures is for explanatory purposes as the invention extends beyond these limited embodiments.

FIG. 1 is a block diagram of an article shipment notification system 100 according to one embodiment of the invention. The article shipment notification system 100 provides web-based article shipment management capable of not only tracking the shipment of articles but also providing notifications to users of the system.

The article shipment notification system 100 includes a shipper 102 and a recipient 104. Typically, the article shipment notification system 100 would support multiple shippers and multiple recipients. However, in the embodiment shown in FIG. 1, only the shipper 102 and the recipient 104 are illustrated. It is assumed that an article is being shipped by the shipper 102 to the recipient 104. A shipper is a person, entity or associated computing device that is responsible for or associated with shipping an article, and a recipient is a person, entity or associated computing device to which the article is being shipped.

In order to track the location and shipping conditions of the article being shipped from the shipper 102 to the recipient 104, a tracking device (TD1) 106 is provided within or attached to the article being shipped. Additionally, a second tracking device (TD2) 108 is also illustrated in FIG. 1 which could be used to track another article. The first tracking device 106 and the second tracking device 108 are coupled to a wireless network 110. In general, the article shipment notification system 100 supports many different tracking devices. Typically, for each article being tracked, the article shipment notification system 100 would use a separate tracking device.

The wireless network 110 is coupled to the Internet 112. Further, a tracking server 114 is coupled to the Internet 112. The tracking server 114 also couples to a tracking database 116. The Internet 112 can be replaced by other data networks (e.g., enterprise network, regional network, Local Area Network, or Wide Area Network).

While an article is being shipped from the shipper 102 to the recipient 104, the first tracking device 106 gathers status information associated with the article. The status information includes at least position (location) information and/or shipping conditions information. The position information is obtained typically from a global positioning system (GPS) receiver within the first tracking device 106. The position information can be obtained or augmented by a local positioning system such as utilized with a local network (e.g., Bluetooth, Wi-Fi, etc.). The shipping conditions information pertains to conditions of or surrounding an article during its shipment. The shipping conditions information can vary with application. Examples of shipping conditions that can be

provided within shipping conditions information include one or more of vibration, acceleration, speed, or direction of travel of, or force or pressure on, the article. Other examples of shipping conditions that can be provided within shipping conditions information include one or more of temperature, humidity, pressure, gaseous or liquid states, chemical compositions, wind speed, color composition, scent, light, sound, smoke, particle or radiation (e.g., infrared radiation).

The status information that is obtained by the first tracking device **106** is sent by the first tracking device **106** to the tracking server **114** via the wireless network **110** and the Internet **112**. The tracking server **114** stores the status information pertaining to the first tracking device **106** into the tracking database **116** such that it is associated with the particular article being shipped. The tracking server **114** tracks the shipment of various articles, and thus stores status information pertaining to the particular articles being shipped.

As the article is being shipped, the tracking server **114** can also monitor the status information associated with the first tracking device **106** (as well as other tracking devices used with the article shipment notification system **100**). The tracking server **114** can produce and send various notifications to shippers and/or recipients of articles being shipped using the article shipment notification system **100**. More particularly, the tracking server **114** can monitor the status information provided by the first tracking device **106** and determine whether and when to send notifications to either the shipper **102** or the recipient **104**, or both.

In one embodiment, the shipper **102** and/or the recipient **104** can provide notification criteria to the tracking server **114**. The shipper **102** and the recipient **104** are coupled to the Internet **112** and thus can supply notification criteria to the tracking server **114** (as well as receive notifications from the tracking server **114**). The notification criteria can specify the channel, timing and nature of the notifications to be received. The notification messages can be transmitted through different channels, such as electronic mail, text message (e.g., page, instant message, etc.), voice call, and facsimile. The timing, for example, can be periodic (e.g., daily) or on events or conditions. The nature of the notification messages can vary based on circumstances and/or user preferences. For example, the user might only desire urgent messages and not messages of lesser priorities. As another example, the user might want to receive messages in an abbreviated format as opposed to a detailed format. As still another example, the user might want to receive warning messages or messages indicating that corrective action is suggested, but opt not to receive regular status messages. In one embodiment, the notification criteria can also be considered user configuration data.

The article shipment notification system **100** can allow the shipper **102** and the recipient **104** to interact with the tracking server **114** through a web interface so that such users are able to configure or set-up to receive certain notifications. The web interface can facilitate a user in arranging to receive notifications by indicating notification criteria. For example, through use of the web interface, a user can make user selections to indicate the notifications to be received and where and by what channels the notifications are to be provided.

The article shipment notification system **100** can provide various different notifications to interested users, such as the shipper **102** and the recipient **104**. For example, the shipper **102** might receive a notification that the article shipment has been delayed, a notification that the article has been delivered (arrived at the destination), a notification that shipping conditions violations have occurred, or a notification of the position of the article. For example, the recipient **104** might

receive notifications such as a notification that an article has been shipped identifying the recipient as the person or entity receiving the article, a notification that an article being shipped to the recipient is nearby, and a notification that an article will be delivered to the recipient shortly (optionally including an estimated delivery time), a notification of shipping conditions violations, or a notification of the position of the article.

The article shipment notification system **100** can also include at least one third-party **118**. The third-party **118** is a user interested in the shipment of the article other than the shipper **102** or the recipient **104**. The article shipment notification system **100** can operate (or be configured to operate) to provide certain notifications to the third-party **118**. The above-mentioned web interface can be used to configure or set-up such notifications. As examples, the third-party **118** can represent a shipping entity, an insurance company, a management organization, a financial organization, etc.

In one embodiment, the notifications can have different levels. The level of a notification can depend on security clearance, authorization, ranks within companies, or the recipient. For example, a notification directed to an insurance company might contain all available status information. In another example, a notification directed to a recipient of the article might only contain selected types/portions of status information (e.g., time of arrival but not humidity information).

The notification can be initiated by a server, such as the tracking server **104**, or on-demand by a requestor (e.g., interested user).

FIG. 2 is a flow diagram of article shipment notification processing **200** according to one embodiment of the invention. The article shipment notification processing **200** can, for example, be performed by a server machine, such as the tracking server **114** illustrated in FIG. 1.

The article shipment notification processing **200** receives **201** status information for an article from a mobile communication device. Here, the mobile communication device transmits the status information for the article that is associated with (e.g., coupled to or encloses) the mobile communication device. The status information that is being transmitted is received at the server by way of a wireless and/or wired network. Next, the status information is stored **202** to a tracking database. The tracking database allows the status information for the article to be organized for subsequent evaluation. The article shipment notification processing **200** then determines **204** whether a notification condition exists based on the status information and notification criteria. The status information for the article was received from the corresponding mobile communication device and stored in the tracking database as noted above. The notification criteria can be either default notification criteria or user-specified notification criteria. In any case, the status information and the notification criteria are utilized to determine whether a notification condition exists. Thereafter, a notification message is produced **206** when the notification condition exists. After the notification message is produced **206** the notification message is sent **208** to an interested user. The manner by which the notification message is sent **208** can vary depending upon the nature of the notification message, the capabilities of the communication system being used, the preferences of the interested user, and the like. After the notification message has been sent **208**, the article shipment notification processing **200** is complete and ends.

FIG. 3 is a flow diagram of notification message processing **300** according to one embodiment of the invention. The noti-

notification message processing 300 can, for example, represent a more detailed implementation for the operations 206 and 208 illustrated in FIG. 2.

The notification message processing 300 assumes that the notification system supports the various types of notifications and distinguishes those notifications based on the existence of particular notification conditions. More specifically, the notification conditions being processed by the notification message processing 300 include, for example, notification conditions pertaining to a new shipment, a position update, an environmental violation, and a delivery status.

The notification message processing 300 begins with a decision 302 that determines whether a new shipment notification condition exists. As an example, a new shipment notification condition is a notification condition that is used to indicate that a new shipment is or has been sent. The new shipment notification condition might notify a recipient that an article was shipped to them on a particular date, from a particular person, and possible also indicate the approximate arrival date and/or time. Still further, in one embodiment, the new shipment notification message can include a link (e.g., hyperlink) to a server location wherein notifications can be arranged. When the decision 302 determines that a new shipment notification condition does exist, then a new shipment notification is produced and sent 304. Alternatively, when the decision 302 determines that a new shipment notification condition does not exist, then a decision 306 determines whether a position update notification condition exists. When the decision 306 determines that a position update notification condition exists, then a position notification message is produced and sent 308. On the other hand, when the decision 306 determines that a position update notification condition does not exist, then a decision 310 determines whether an environmental violation notification condition exists. When the decision 310 determines that an environmental violation notification condition does exist, then an environmental notification message is produced and sent 312. As an example, an environmental notification message informs the recipient of the message that one or more environmental violation notification conditions have been violated. For example, the environmental notification message might indicate that the temperature of the article has exceeded a desired limit, that the humidity has exceeded a desired limit, or that the article has undergone excessive forces. Alternatively, when the decision 310 determines that an environmental violation notification condition does not exist, then a decision 314 determines whether a delivery notification condition exists. When the decision 314 determines that a delivery notification condition does exist, then a delivery notification message is produced and sent 316. On the other hand, when the decision 314 determines that a delivery notification condition does not exist, then as well as following the operation 316, a notification message processing 300 is complete and ends.

It should be noted that the notification message processing can send one or more notifications to an interested user at any point in time. Additionally, the multiple notifications can be combined into a single notification. Further, additional notification conditions beyond those discussed with respect to the notification message processing 300 shown in FIG. 3 can also be utilized and processed in a similar manner. Still further, the organization or arrangement of the processing of the notification message processing 300 shown in FIG. 3 is illustrative and thus not required. For example, the order of evaluating the decisions is not limited to that shown in FIG. 3. In other words, the notification message processing 300 can vary with implementation.

As an illustration regarding notification, the shipping conditions information can provide chemical related feedback or notification information based on chemical substances being sensed within the package or object being shipped. For example, a chemical sensor can be provided within the mobile tracking device to sense chemical compositions (e.g., gaseous components).

With respect to the notification criteria utilized to determine when notifications are to be sent, a user can configure those notifications desired and the particular conditions for such notifications. For example, a user can configure notifications by interacting with a web site to set the notification criteria.

Although the notifications often are sent to the sender or recipient of the package or article being shipped, the notifications can also be sent or forwarded to third parties. One particular third party is, for example, an insurance representative. The notification can indicate that certain shipping conditions have been violated. The notification can also provide instructions or recommendations to take corrective action. The corrective action can, for example, include fixing the problem that caused the shipping conditions violation or mitigating damages caused by the shipping conditions violation.

FIG. 4 is a flow diagram of requested notification processing 400 according to one embodiment of the invention. The requested notification processing 400 is, for example, performed by a server machine, such as the tracking server 114 illustrated in FIG. 1.

The requested notification processing 400 begins with a decision 402 that determines whether a status request has been received. When the decision 402 determines that a status request has not been received, the requested notification processing 400 awaits such a request. In other words, the requested notification processing 400 is invoked when a status request is received. A user (i.e., requestor) typically initiates the requested notification processing 400 when status information is desired by making a status request (or notification request).

Once the decision 402 determines that a status request has been received, then an identifier for the mobile tracking device is determined 404. The identifier serves to identify the particular mobile tracking device for which the status information is to be obtained. After the identifier is identified, status information for the mobile tracking device associated with the identifier is retrieved 406. If desired, the requested notification processing 400 can further determine whether the requestor for the status information is authorized to receive the status information or the level of status information the requestor is authorized to receive.

After the status information has been retrieved 406, a response including at least a portion of the status information is formed 408. In one embodiment, the response being formed 408 is in the format of an electronic mail message (email). For example, if the status request were in the form of an email message (including any text or graphical message being electronically transmitted), the response could be a reply email to the status request email message. In other embodiment, the response being formed 408 can take various other formats. After the response has been formed 408, the response is transmitted 410 to the requestor. The transmission of the response can be over a wireless and/or a wired network. For example, when the format of the response is an email message, the response is typically sent to a network address or email address associated with the requestor that issued the status request. Following the operation 410, the requested notification processing 400 is complete and ends.

FIG. 5 is a flow diagram of email status processing 500 according to one embodiment of the invention. The email status processing 500 is, for example, performed by a server machine, such as the tracking server 114 illustrated in FIG. 1. The email status processing 500 can be considered a more detailed embodiment of the requested notification processing 400 illustrated in FIG. 4.

The email status processing 500 begins with a decision 502 that determines whether an email status request has been received 502 from a requestor. When the decision 502 determines that an email status request has not been received, then the email status processing 500 awaits such a request. Once the decision 502 determines that an email status request has been received, then the email status request is parsed 504 to get a reference number and requestor information.

Next, a decision 506 determines whether the requestor is authorized. Here, the determination of whether or not the requestor is authorized can be performed using some or all of the requestor information and the reference number for the mobile tracking device of interest. When the decision 506 determines that the requestor is not authorized, then an information unavailable reply message is sent 508 to the requestor.

When the decision 506 determines that the requestor is authorized, the mobile tracking device is determined 510 based on the reference number. As an example, the reference number can be an identifier that is used by users to identify the mobile tracking device they are desirous of tracking. Internally the system may use the reference number or another identifier. The reference number may be a fixed number or a re-assignable number that specifies a particular mobile tracking device. For example, the reference number can be a telephone number or network address used by the mobile tracking device for communications.

After the mobile tracking device has been determined 510, the status information for the determined mobile tracking device is retrieved 512. In one embodiment, the status information is retrieved 512 from a database that stores status information for a plurality of mobile tracking devices. The database is, for example, the tracking database 116 illustrated in FIG. 1.

Next, a decision 514 determines whether the requested response is permitted. In other words, although the requestor is permitted to access the status information, the type of response that is permitted to be supplied to the requestor could be limited. Hence, when the decision 514 determines that the requested response is not permitted, then a requested response unavailable message is sent 516 to the requestor. On the other hand, when the decision 514 determines that the requested response is permitted, then a response message is produced and sent 518 to the requestor. In one embodiment, the message can take different formats depending upon a user's configuration requests or the destination for the response message. Following the operation 518, as well as following the operations 508 and 516, the email status processing 500 ends.

A web interface (or Graphical User Interface) can be made available to users. The web interface can, among other things, assist a user with configuring notifications for themselves or others. One embodiment of such a web interface is referred to as a notification setup screen.

FIG. 6 is a representative notification setup screen 600 according to one embodiment of the invention. The notification setup screen 600 is, for example, displayed on a display device associated with a user's computer. The notification setup screen 600 would be presented on the display device of the user's computer when the user desires to configure the notification system to provide certain automated notifica-

tions. As an example, a network browser application operating on the user's computer can present the notification setup screen 600 and interface thereby with the tracking server 114 to configure the notification system. The user can, for example, be the shipper 102, the recipient 104 or the third-party 118 illustrated in FIG. 1.

The notification setup screen 600 includes a notification format region 602, a notification destination region 604, and a notification criteria region 606. These regions are portions of the notification setup screen which is often a window displayed on a display device as a graphical user interface. The notification format region 602 is a region that allows the user to select a notification channel (format). In the example, shown in FIG. 6, the user is able to select one of email, page or facsimile as the notification channel. The notification destination region 604 is a region that allows the user to specify one or more destinations. The destination can be an email address, a network address, a telephone number, or a facsimile number. The notification criteria region 606 is a region that allows the user to select, enter or otherwise choose notification criteria. The notification criteria set when and/or what notification are sent to the recipient users. The notification criteria can, for example, enable a user to specify that notifications are to be sent based on position, delivery or other conditions. For example, the notifications regarding position can be configured to be sent periodically (e.g., hourly, daily, weekly, etc.) or based on a distance traversed (e.g., every 1, 5, 10, 50 or 100 miles). For example, the notifications regarding delivery can be configured to be sent on delivery of the article/object to a destination, or when delivery is impending (i.e., article/object is proximate to the destination). For example, the notification regarding conditions of the shipment can be initiated periodically or on-event. In the representative example shown in FIG. 6, the notification can be periodic (e.g., hourly, daily, weekly, etc.) or can be when an extreme condition occurs, such as temperature exceeding a threshold temperature or a force exceeding a threshold amount.

Regardless of how the notification is triggered, the content of the notification could include merely status information about the condition causing the trigger, or could also include other current status information. For example, a periodic position notification could also include other status information besides position information. Likewise, a periodic condition notification could include other condition information (e.g., temperature, force, etc.) as well as position information.

Further, different channels, types or criteria can be used to provide notifications to different recipients. Hence, the notification can be customized for different users, namely, shippers, recipients and third-parties.

The web interface used to configure notification is not limited to the notification setup screen 600 illustrated in FIG. 6. Instead, the web interface can take a variety of different forms. It may use defaults, preferences (e.g., user-specified or inferred from prior actions), or other means to assist the user in interfacing with the web interface.

The notifications provided by the invention can be informative and/or instructive. The informative nature of the notifications reflects the inclusion of status information in the notification. The instructive nature of the notifications can reflect instructions or requests for corrective action to remedy dangerous or unwanted status of the shipment. For example, if a shipment is reaching dangerously high temperatures, the shipping company can be notified of the present or anticipated problem and request corrective action to remedy the situation. Further, the status information history for the shipment of the

11

article can be made available so an interested user can evaluate where a problem occurred, how it occurred, and who was at fault.

When shipping an article, a shipper might insure the shipment. The insurance could, for example, be provided by the shipping entity or a third party. The insurance could insure against certain insured criteria, such as delivery by a deadline, damage to the article, exposure of the article to an unaccepted environmental conditions, etc. Notifications concerning violations (or non-violations) of insured criteria can be automatically provided to interested users.

FIG. 7 is a flow diagram of insurance compliance processing 700 according to one embodiment of the invention. The insurance compliance processing 700 can, for example, allow notification messages to be automatically sent to interested users (e.g., shipping entity, shipper, or insurance representative).

The insurance compliance processing 700 receives 702 status information for an article from a mobile communication device. As noted above, at least in one embodiment, the status information includes at least position (location) information and shipping conditions information. In addition, insured criteria pertaining to the shipment of the article is received 704. The insured criteria are typically dependent on insurance policy coverage placed on the article. Next, the status information is compared 706 with the insured criteria. A decision 708 then determines whether a notification condition exists. In one implementation, a notification condition exists when the status information indicates that one or more insured criteria have been breached. In another implementation, an interested user can configure the system to set notification conditions associated with status conditions and insured criteria. When the decision 708 determines that a notification condition exists, then a notification message is produced 710. The notification message is then sent 712 to an interested user. After the notification message is sent 712, the insurance compliance processing 700 is complete and ends. Alternatively, when the decision 708 determines that a notification condition does not exist, then the operations 710 and 712 are bypassed and the insurance compliance processing 700 ends.

In the course of shipping an article, a shipping entity might have agreed to deliver the article to a destination within a prescribed period of time. The failure of the shipping entity to meet this or any other condition can entitle the sender or recipient to a refund of some of all of the costs the sender incurred in shipping the article. Typically, the party that originally paid for the costs of the shipping would normally be the party that receives the refund. The discussion provided below primarily assumes that the sender is the party that would receive any refund, though such is not a limitation.

FIG. 8 is a flow diagram of refund processing 800 according to one embodiment of the invention. The refund processing 800 serves to automatically request and process refunds on behalf of senders, and their refunds with respect to shipping entities.

The refund processing 800 begins by receiving 802 status information pertaining to a package (i.e., article). The package is being shipped to a recipient. The sender is utilizing a carrier (i.e., shipping entity) to perform the shipping function to deliver the package to the recipient. A decision 804 determines whether there are any guaranteed conditions associated with the shipment that have not been satisfied. Here, the status information can be utilized to determine whether one or more of the guaranteed conditions are not satisfied. The guaranteed conditions are typically associated with a shipping agreement between the sender and the shipping entity. In one embodi-

12

ment, one guaranteed condition of a shipment is a guaranteed delivery time. When the decision 804 determines that one or more guaranteed conditions of the shipment have not been satisfied, then a refund request is prepared 806 to recover some or all of the cost to ship the package. Next, the refund request is electronically submitted 808 to the shipping entity. The submission to the shipping entity can be done using a general address, a special address associated with refunds, or it could be an agent's address that is utilized to process the refund request for the shipping entity. Further, the electronic submission 808 can be performed through electronic mail, facsimile transmission, or FTP transmission. After the refund request has been electronically submitted 808, the user (sender) is notified 810 that the refund request has been submitted. On the other hand, when the decision 804 determines that all guaranteed conditions have (so far) been satisfied, then the operations 806-810 are bypassed. Following the operation 810, the refund processing 800 is complete and ends.

Additionally, the refund processing could also further monitor the processing of a refund request by the shipping entity. For example, after submission of the refund request, the refund processing can examine whether the refund associated with the refund request has been received. Further, additional monitoring could be performed to determine that the receipt of the refund request has been received, the stage of its processing by the shipping entity, or other refund related information. Furthermore, the user (sender) can be notified when the refund monies have been received. These refund monies can be electronically transmitted to the sender or can be placed in an account that is associated with the sender.

The refund processing can be initiated in a variety of different ways. For example, the refund processing can be triggered by the arrival of the package at its destination. Alternatively, the refund processing could be performed whenever a guaranteed condition is not met, such as the guaranteed delivery time has been exceeded. As yet another alternative, the refund processing can be performed as status information is updated or as processing resources are available.

The invention is suitable for asset management, such as tracking location/position of assets and monitoring conditions of assets. Assets can, for example, include: packages, purchased goods, moving boxes/creates, and pallets.

The position resolution can be enhanced through use of a community layout and/or profile information.

FIG. 9 is a block diagram of an object tracking system 900 according to one embodiment of the invention. The object tracking system 900 can be used to track various objects including packages, humans, pets and the like. The object tracking system 900 includes a plurality of wireless devices 902. These wireless devices 902 are provided with or proximate to objects being tracked by the object tracking system 900. These mobile devices 902 have GPS receivers that can receive GPS position information from a GPS system 903. The acquisition of such position information can be performed on demand, periodically or on need. The mobile devices 902 communicate over wireless links with a wireless network 904. The wireless network 904 then couples to a wired network 906. A location management server 908 is coupled to the wireless network 906. The location management server 908 provides centralized storage of the location information for each of the mobile devices 902 in a location database 910. A map database 912 is also coupled to the location management server 908. The map database 912 can directly connect to the location management server 908 or can reside elsewhere on the wired network 906. The location management server 908 can interact with the map database

912 to convert position information provided by the GPS information into map coordinates, street addresses, etc.

In addition, the object tracking system 900 also includes a community layout server 914. The community layout server 914 can be coupled to the wired network 906 or the wireless network 904. In one embodiment, a community can be associated with a commercial building, a shopping mall, a residential community and the like. The community layout server 914 interacts with a community layout database 916 to resolve locations, such as street addresses and cross streets, into more intelligible locations in a community. For example, instead of a street address, the locations can pertain to points of interest with respect to the community. As an illustration, in the case of a commercial building, with five floors, the community layout database 916 would convert the GPS information (plus any additional sensor information relevant to making the determination also provided by the mobile device 902, such as altitude and direction) to obtain a community location or point of interest. For example, using the GPS position information together with other sensor information, the community layout server 914 can interact with the community layout database 916 to precisely locate a particular mobile device 902 to a particular point of interest. In the case of the commercial building with five floors, the mobile device 902 can be pinpointed to the third floor which pertains to the corporation Acme, Inc. The point of interest or community position can then be sent from the community layout server 914 through the wired network 906 to the location management server 908 which then in turn stores the community position or point of interest in the location database 910 as the position of the particular mobile device 902.

Once the location database 910 has the positions of the mobile devices 902, when subsequent position data is sent to the location management server 908, these positions are suitably updated in the location database 910. Additionally, other of the mobile devices 902 or a representative client machine 918 coupled through an Internet Service Provider (ISP) 920 to the wired network 906 can be permitted to access the locations of one or more of the mobile devices 902. Assuming that the requesting party is allowed access to said position information, the request for such information is processed by the location management server 908. When permission is granted, the locations desired are retrieved from the location database 910 and returned to either the requesting mobile devices 902 or the requesting client machine 918. In a similar manner, access to other non-location information (i.e., additional sensor information or conditions information) pertaining to the mobile devices 902 can be available.

In one embodiment, the client machine 918 or a particular one of the mobile devices 902 can set up a private or semi-private web page that is hosted by a server (e.g., the location management server 908 or other server) on the wired network 906. Then, the page can be customized to monitor the location of a number of the mobile devices 902. Hence, thereafter, the requestor need only access the customized web page to obtain the current position information for such mobile devices. With such an embodiment, a web page could be provided to track a plurality of packages being transported from a warehouse to a customer. In another embodiment, a similar web page can be setup to allow a parent to track the position of mobile devices that are affixed to his children such that the parent can easily monitor the position of his children. In this example, the object tracked is a living being (e.g., person).

The object tracking system 900 could also be augmented by wireless profile devices 922. These profile devices 922 can wirelessly couple to the mobile devices 902 using the wireless network 904. The profile devices 922 could be short range

transmitters or transceivers. The profile devices 922 could store one or more profiles for a particular location in which they reside.

Hence, the mobile device 902 can wirelessly communicate with the profile device 922, if available, to acquire a profile pertaining to its location. For example, with the profile device 922 placed in the office building of Acme, Inc., when the mobile device 902 is in such office building, the mobile device 902 can acquire the profile from the proximate profile device 922. The profile can include the business name, its location, contact information for the business, etc. Thereafter, some or all of the profile information can be stored in the mobile device 902 and/or forwarded to the location management server 908 or other server for storage. Hence, the location provided by the profile may be more exacting and descriptive than the GPS position, such that the location of the mobile device 902 can be better determined.

In some cases it may be useful to control or limit the wireless communications with respect to the profile devices 922 so that the mobile devices 902 do not inadvertently receive the wrong profile. Various techniques can be utilized to provide control over the wireless communications. For example, the profile device 922 may or may not use a directional antenna. As another example, the profile device 922 could also control (e.g., limit) its transmission power.

In one embodiment of package tracking and monitoring, a GPS-enabled mobile device is attached to a package. As the package travels, the mobile device periodically sends its position information wirelessly to a center. This can be done, for example, through a cellular connection. The center keeps track of the package's location, and can post its path on a Web site. A user might have to pay to access the location information. For example, at 3 am in the morning, the user can log into the site, and enter a password to find out that the package is on the 9th floor of the Empire State Building (e.g., its destination), or more particularly the package is at the office of Acme, Inc. on the 9th floor of the Empire State Building.

In one embodiment, in addition to position information, other identifying information can also be automatically included based on radio frequency identification (RFID) tags. The RFID tags typically include memory chips equipped and radio antennas. They can be attached to objects (or people) to transmit data about the objects. Typically, the memory chips do not include tremendous amount of information. They may only have 2 kilobytes of data, sufficient to encode, such as a serial number, where and when the product was manufactured, and other relevant information. These tags can come in a number of configurations. For example, an active tag uses a battery-powered transponder to emit a constant signal carrying the identifying information programmed into the chip. Active tags are more applicable to situations where readers are not close to the tags. A semi-passive tag likewise has a battery, but may not be activated until it receives a signal from a reader. They are more applicable to situations that do not need continuous tracking. A passive tag has no battery; its antenna extracts power from the reader's radio wave signal to transmit the identifying information on the chip. Passive tags are typically relatively inexpensive, but may have to be within a few feet of a reader to extract power. The tags can provide identifying information to the corresponding positioning information, which may also include temporal information. Together, the location and identification of assets can be automatically tracked.

In still another embodiment, personalized asset management or object tracking can be provided. For example, a user can track a package or object being shipped at her convenience. Such tracking can be achieved independent of a ship-

ping entity that ships the package. A representative scenario is as follows. A user acquires a location-aware (e.g., GPS-aware) mobile communication device, such as a limited-functionality mobile telephone or 2-way pager, and places the mobile communication device in or on the package or object. The user makes note of the identifier for the mobile communication device. Then, periodically or on-demand, the user can determine the precise location of her package. In one implementation, the user (or a server on the user's behalf) sends a message to the mobile communication object. The message can be a voice or text message, or other form of data, that simply requests the mobile communication device to get its present location. The mobile communication device then determines its location. The mobile communication device can determine its location, for example, by directly using a GPS receiver or indirectly via another device in its immediate vicinity having GPS awareness. Further, battery lifetime can be conserved using the intelligent GPS information acquisition approaches noted in U.S. Provisional Patent Application No. 60/375,998. The mobile communication device then replies back (e.g., through voice or text message) to the user (or server) to inform of its present location. The user can, for example, call or page the mobile communication device and get the reply message. Alternatively, the user need only access the server to access the location data it holds for the package or object associated with the mobile communication device. The server can also automatically track these mobile communication device and alert the users when problems or delays in its transport are identified. Further, alerts or message could notify a recipient or sender of an object or package when the same is determined to be in-route, arrived at and/or proximate to its destination. Besides location, the reply message could also provide other information such as velocity, temperature, humidity, pressure, forces or stresses.

In one embodiment, the mobile device (mobile tracking device or mobile communication device) can include a solar panel. The solar panel can provide electrical power for the mobile device. The solar panel can thus charge a battery used to power the mobile device and/or itself power the mobile device. When the mobile device is affixed to an object (e.g., package) to be shipped, the solar panel can remain at least partially exposed to the outside of the object so as to be able to receive light. The solar panel can be integrated with the housing of the mobile device or can be separate and couple to the mobile device via one or more wires (e.g., a cable).

The present invention has described one or more GPS devices as to identify a location. However, the present invention is not limited to using GPS devices. In certain situations, other wireless or mobile devices can also serve as location-designating devices, such as devices based on GSM technologies or Wi-Fi technologies. Through the techniques of triangulation, these devices can also designate a location. Such triangulation techniques should be known to those skilled in the art.

The above-described systems, devices, methods and processes can be used together with other aspects of an object tracking system, including the various aspects described in: (i) U.S. Provisional Patent Application No. 60/444,198, filed Jan. 30, 2003, and entitled "SYSTEM, METHOD AND APPARATUS FOR ACQUIRING, PRESENTING, MONITORING, DELIVERING, MANAGING AND USING STATUS INFORMATION," which is hereby incorporated herein by reference; (ii) U.S. Provisional Patent Application No. 60/418,491, filed Oct. 15, 2002, and entitled "SYSTEM, METHOD AND APPARATUS FOR ACQUIRING, PRESENTING, MONITORING, DELIVERING, MANAGING AND USING STATUS INFORMATION," which is hereby

incorporated herein by reference; (iii) U.S. Provisional Patent Application No. 60/404,645, filed Aug. 19, 2002, and entitled "SYSTEM, METHOD AND APPARATUS FOR ACQUIRING, PRESENTING, MONITORING, DELIVERING, MANAGING AND USING POSITION AND OTHER INFORMATION," which is hereby incorporated herein by reference; and (iv) U.S. Provisional Patent Application No. 60/375,998, filed Apr. 24, 2002, and entitled "SYSTEM, METHOD AND APPARATUS FOR ACQUIRING, PRESENTING, MANAGING AND USING POSITION INFORMATION," which is hereby incorporated herein by reference.

The various embodiments, implementations and features of the invention noted above can be combined in various ways or used separately. Those skilled in the art will understand from the description that the invention can be equally applied to or used in other various different settings with respect to various combinations, embodiments, implementations or features provided in the description herein.

The invention can be implemented in software, hardware or a combination of hardware and software. The invention can also be embodied as computer readable code on a computer readable medium. The computer readable medium is any data storage device that can store data which can thereafter be read by a computer system. Examples of the computer readable medium include read-only memory, random-access memory, CD-ROMs, magnetic tape, optical data storage devices, and carrier waves. The computer readable medium can also be distributed over network-coupled computer systems so that the computer readable code is stored and executed in a distributed fashion.

The advantages of the invention are numerous. Different embodiments or implementations may yield different advantages. One advantage of the invention is that interested persons can track and/or be notified as to status of an object. Another advantage of the invention is that status of an object can be monitored such that not only position information but also shipping conditions information are able to be monitored during shipment. Still another advantage of the invention is that status information of an object being transported can be obtained by an interested party (e.g., shipper, recipient or third-party) through notifications or through access to a website (e.g., tracking server).

The many features and advantages of the present invention are apparent from the written description and, thus, it is intended by the appended claims to cover all such features and advantages of the invention. Further, since numerous modifications and changes will readily occur to those skilled in the art, it is not desired to limit the invention to the exact construction and operation as illustrated and described. Hence, all suitable modifications and equivalents may be resorted to as falling within the scope of the invention.

What is claimed is:

1. A computer-implemented method for tracking an article, which is being transported to a destination at the request of a user, the method comprising:

tracking, at an Internet package tracking site, status information of the article, such status information being acquired by a mobile communication device in or attached to the article; and

allowing an authorized representative to be aware of the status information from the Internet package tracking site,

wherein the status information includes at least position information and physical condition information,

wherein the mobile communication device includes at least a position sensor and a physical condition sensor,

17

wherein at least a portion of the status information is related to a condition insured by an insurance on the article,
 wherein there is a cost to the user to have the article transported to the destination, and
 wherein the method further comprises
 determining if the portion of the status information related to the condition insured indicates that a threshold value has been exceeded; and,
 providing a benefit to the user if the determining determines that the portion of the status information related to the condition insured indicates that the threshold value has been exceeded.

2. A method as recited in claim 1,
 wherein the authorized representative is associated with a business that has provided insurance on the article, and wherein the method further comprises providing identification information regarding the article based on a RFID tag.

3. A method as recited in claim 1, wherein the method further comprises automatically sending a message to the authorized representative if a piece of status information exceeds a predefined threshold.

4. A method as recited in claim 1, wherein the type of physical condition is related to a physical condition of the environment of the article.

5. A method as recited in claim 1, wherein the type of physical condition is related to a physical condition of the article.

6. A computer-implemented method for tracking an article, which is being transported to a destination, the method comprising:
 tracking, at an Internet package tracking site, status information of the article, such status information being acquired by a mobile communication device in or attached to the article; and
 allowing an authorized representative to be aware of the status information from the Internet package tracking site,
 wherein the status information includes at least position information and a type of physical condition information,
 wherein the mobile communication device includes at least two types of sensing mechanisms, one for sensing position and the other for sensing the type of physical condition, and
 wherein at least one piece of information in the status information is related to a condition insured by an insurance on the article,
 wherein a certain amount of money needs to be paid by a user to have the article transported to the destination, and wherein the method further comprises initiating a process to pay at least a portion of the certain amount of money back to the user in view of a piece of status information exceeding a predefined threshold.

7. A method as recited in claim 6, wherein the predefined threshold is a delivery time of the article.

8. A method as recited in claim 7, wherein the initiating of the process to pay is triggered by the arrival of the article at the destination exceeding the delivery time.

9. A method as recited in claim 1, wherein a piece of status information indicates that the condition insured has been violated.

18

10. A method as recited in claim 1,
 wherein the method further comprises allowing the authorized representative to access a map representing a route that the article has traveled during the transportation to the destination, and
 wherein the map depicts a plurality of the positions of the article along the route and the time the article being at each of such positions.

11. A method as recited in claim 1, wherein the method further comprises providing notification to a person under a predetermined condition.

12. A method as recited in claim 11,
 wherein the person arranges with a business to transport the article to the destination, and
 wherein the method further comprises providing an interface for the person to configure the predetermined condition.

13. A method as recited in claim 12, wherein the predetermined condition is related to the time the article is delivered to the destination.

14. A method as recited in claim 1, wherein the authorized representative is provided, via the Internet package tracking site, a history of the status information, which includes status information at a number of positions that the article has traveled through during the transportation of the article to the destination.

15. A method as recited in claim 1,
 wherein the method is configured to track the article in a community,
 wherein a piece of position information identifies a location of the article in the community, and
 wherein the method further comprises receiving information regarding a business related to the location based on wireless communication between the mobile communication device and a wireless device at the business.

16. An article tracking system for tracking an article being transported to a destination at the request of a user, where there is a cost to the user to have the article transported to the destination, the article tracking system comprising:
 a tracking server configured to (i) track status information of the article, the status information includes at least position information and physical condition information, the status information being provided to the tracking server by a mobile communication device in or attached to the article, the mobile communication device including at least a position sensor and a physical condition sensor; (ii) determine, while the article is being transported, whether the status information indicates that a threshold value has been exceeded; (iii) enable access to the status information by way of accessing an Internet package tracking site hosted by the tracking server or by way of receiving an electronic notification providing the status information; and (iv) provide a benefit to the user if the status information indicates that the threshold value has been exceeded,
 wherein the threshold value is associated with a limit condition for the transport of the article, wherein the limit condition is a guaranteed or an insured condition for the transport of the article.

17. An article tracking system as recited in claim 16,
 wherein the benefit to the user is at least a partial refund of the cost to the user to have the article transported to the destination.

UNITED STATES PATENT AND TRADEMARK OFFICE
CERTIFICATE OF CORRECTION

PATENT NO. : 7,809,377 B1
APPLICATION NO. : 11/732581
DATED : October 5, 2010
INVENTOR(S) : Lau et al.

Page 1 of 1

It is certified that error appears in the above-identified patent and that said Letters Patent is hereby corrected as shown below:

On Title Page 3, under Item (56) References Cited, U.S. Patent Documents:

“2008/0261638 A1 10/2008 Lau et al.” should be --2008/0261636 A1 10/2008 Lau et al.--.

On Title Page 3, under Item (56) References Cited, under Other Publications:

Right column, line 49, “AsiaBixTech” should be --AsiaBizTech--.

Right column, line 58, “Mon1Track” should be --MoniTrack”--.

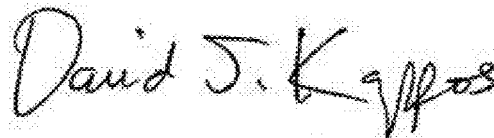
On Title Page 4, under Item (56) References Cited, under Other Publications:

Right column, line 9, “Messinger” should be --Messenger--.

IN THE SPECIFICATION:

Column 4, line 50, “is server” should be --server--.

Signed and Sealed this
Twenty-second Day of November, 2011



David J. Kappos
Director of the United States Patent and Trademark Office