



US008301158B1

(12) **United States Patent**
Thomas

(10) **Patent No.:** **US 8,301,158 B1**
(45) **Date of Patent:** ***Oct. 30, 2012**

- (54) **METHOD AND SYSTEM FOR LOCATION TRACKING**
- (75) Inventor: **C. Douglass Thomas**, Campbell, CA (US)
- (73) Assignee: **IpVenture, Inc.**, Los Altos, CA (US)
- (*) Notice: Subject to any disclaimer, the term of this patent is extended or adjusted under 35 U.S.C. 154(b) by 305 days.

This patent is subject to a terminal disclaimer.

5,512,902 A	4/1996	Guthrie et al.
5,515,858 A	5/1996	Myllymaki
5,528,247 A	6/1996	Nonami
5,528,518 A	6/1996	Bradshaw et al.
5,532,690 A	7/1996	Hertel
5,539,748 A	7/1996	Raith
5,541,845 A	7/1996	Klein
5,550,551 A	8/1996	Alesio
5,568,119 A	10/1996	Schipper et al.
5,570,412 A	10/1996	LeBlanc
5,576,716 A	11/1996	Sadler
5,592,173 A	1/1997	Lau et al.
5,598,460 A	1/1997	Tendler
5,604,708 A	2/1997	Helms et al.
5,623,260 A	4/1997	Jones
5,623,418 A	4/1997	Rostoker

(Continued)

(21) Appl. No.: **12/150,126**

(22) Filed: **Apr. 26, 2008**

Related U.S. Application Data

- (63) Continuation of application No. 09/797,517, filed on Feb. 28, 2001, now Pat. No. 7,366,522.
- (60) Provisional application No. 60/185,480, filed on Feb. 28, 2000.

- (51) **Int. Cl.**
H04W 24/00 (2009.01)
- (52) **U.S. Cl.** **455/456.1**; 455/404.2; 455/414.2; 455/440; 340/539.13
- (58) **Field of Classification Search** 455/456.1, 455/404.2, 414.2, 440; 340/539.13, 825.49, 340/988; 342/357.1, 457, 357.01; 701/213
See application file for complete search history.

(56) **References Cited**

U.S. PATENT DOCUMENTS

5,347,274 A	9/1994	Hassett
5,389,934 A	2/1995	Kass
5,400,020 A	3/1995	Jones et al.
5,461,365 A	10/1995	Schlager et al.
5,491,486 A	2/1996	Welles, II et al.

FOREIGN PATENT DOCUMENTS

EP 0 874 529 A2 10/1998
(Continued)

OTHER PUBLICATIONS

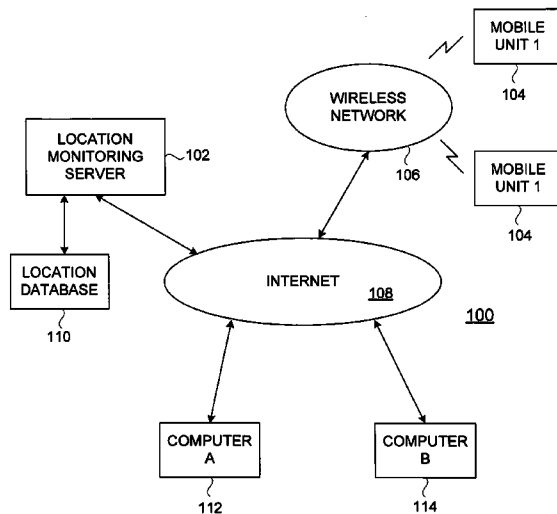
U.S. Appl. No. 12/150,203, filed Apr. 2008, Thomas.*
(Continued)

Primary Examiner — Nghi H Ly

(57) **ABSTRACT**

Techniques for location tracking, location utilization, and dissemination and management of location information are disclosed. As a location monitoring system, one embodiment includes at least a plurality of mobile computing devices supported by a wireless network, and a web server coupled to a wired network (e.g., the Internet) that couples to the wireless network. Each of the mobile computing devices are associated with and proximate to an object whose location is being monitored. The web server stores the locations of each of the mobile computing devices or the objects proximate thereto, and enables only authorized users to obtain access the locations via the wired network.

68 Claims, 8 Drawing Sheets



U.S. PATENT DOCUMENTS					
5,629,678 A	5/1997	Gargano et al.	6,198,390 B1	3/2001	Schlager et al.
5,633,874 A	5/1997	Diachina et al.	6,198,431 B1	3/2001	Gibson
5,650,770 A	7/1997	Schlager et al.	6,198,930 B1	3/2001	Schipper
5,652,570 A	7/1997	Lepkofker	6,199,045 B1	3/2001	Giniger et al.
5,673,692 A	10/1997	Schulze et al.	6,212,133 B1	4/2001	McCoy et al.
5,686,888 A	11/1997	Welles, II et al.	6,226,622 B1	5/2001	Dabbiere
5,710,551 A	1/1998	Ridgeway	6,231,519 B1	5/2001	Blants et al.
5,712,619 A	1/1998	Simkin	6,232,916 B1	5/2001	Grillo et al.
5,731,757 A	3/1998	Layson et al.	6,236,358 B1	5/2001	Durst et al.
5,731,788 A	3/1998	Reeds	6,238,337 B1	5/2001	Kambhatla et al.
5,742,233 A	4/1998	Hoffman et al.	6,243,039 B1	6/2001	Elliot
5,751,245 A	5/1998	Janky et al.	6,243,660 B1	6/2001	Hsu et al.
5,771,001 A	6/1998	Cobb	6,246,376 B1	6/2001	Bork et al.
5,771,455 A	6/1998	Kennedy, III et al.	6,252,543 B1	6/2001	Camp
5,774,876 A	6/1998	Woolley et al.	6,263,280 B1	7/2001	Stingone, Jr.
5,797,091 A	8/1998	Clise et al.	6,278,936 B1	8/2001	Jones
5,808,565 A	9/1998	Matta et al.	6,281,797 B1	8/2001	Forster
RE35,920 E	10/1998	Sorden et al.	6,282,362 B1	8/2001	Murphy et al.
5,825,283 A	10/1998	Camhi	6,282,495 B1	8/2001	Kirkhart et al.
5,826,195 A	10/1998	Westerlage et al.	6,292,687 B1	9/2001	Lowell et al.
5,835,907 A	11/1998	Newman	6,298,306 B1	10/2001	Suarez et al.
5,841,352 A	11/1998	Prakash	6,300,875 B1	10/2001	Schafer
5,844,862 A	12/1998	Cocatre-Zilgien	6,302,844 B1	10/2001	Walker et al.
5,850,196 A	12/1998	Mowers	6,304,467 B1	10/2001	Nebragic
5,861,841 A	1/1999	Gildea et al.	6,314,308 B1	11/2001	Sheynblat et al.
5,883,594 A	3/1999	Lau	6,317,049 B1	11/2001	Toubia et al.
5,889,770 A	3/1999	Jokiaho et al.	6,323,807 B1	11/2001	Golding et al.
5,892,454 A	4/1999	Schipper et al.	6,324,213 B1	11/2001	Harrison
5,905,461 A	5/1999	Neher	6,327,533 B1	12/2001	Chou
5,913,078 A	6/1999	Kimura et al.	6,331,817 B1	12/2001	Goldberg
5,917,433 A	6/1999	Keillor et al.	6,339,397 B1	1/2002	Baker
5,918,180 A	6/1999	Dimino	6,340,928 B1	1/2002	McCurdy
5,938,721 A	8/1999	Dussell et al.	6,342,847 B1	1/2002	Archuleta et al.
5,948,040 A	9/1999	DeLorme et al.	6,349,257 B1	2/2002	Liu et al.
5,948,043 A	9/1999	Mathis	6,353,390 B1	3/2002	Beri et al.
5,959,575 A	9/1999	Abbott	6,353,798 B1	3/2002	Green et al.
5,959,577 A	9/1999	Fan et al.	6,356,841 B1	3/2002	Hamrick et al.
5,963,130 A	10/1999	Schlager et al.	6,362,778 B2	3/2002	Neher
5,970,388 A	10/1999	Will	6,363,254 B1	3/2002	Jones et al.
5,982,285 A	11/1999	Bueche et al.	6,363,323 B1	3/2002	Jones
5,982,807 A	11/1999	Snell	6,373,430 B1	4/2002	Beason et al.
5,983,108 A	11/1999	Kennedy, III et al.	6,377,810 B1	4/2002	Geiger et al.
5,991,690 A	* 11/1999	Murphy 701/211	6,388,612 B1	5/2002	Neher
5,995,849 A	11/1999	Williams et al.	6,393,346 B1	5/2002	Keith et al.
6,002,363 A	12/1999	Krasner	6,404,352 B1	6/2002	Ichikawa et al.
6,002,982 A	12/1999	Fry	6,407,698 B1	6/2002	Ayed
6,009,319 A	12/1999	Khullar et al.	6,411,892 B1	6/2002	Van Diggelen
6,013,007 A	1/2000	Root et al.	6,411,899 B2	6/2002	Dussell et al.
6,014,080 A	1/2000	Layson, Jr.	6,421,538 B1	7/2002	Byrne
6,014,090 A	1/2000	Rosen et al.	6,426,719 B1	7/2002	Nagareda et al.
6,023,241 A	2/2000	Clapper	6,427,120 B1	7/2002	Garin et al.
6,031,496 A	2/2000	Kuittinen	6,430,602 B1	8/2002	Kay et al.
6,032,051 A	2/2000	Hall et al.	6,433,732 B1	8/2002	Dutta et al.
6,034,622 A	3/2000	Levine	6,434,396 B1	8/2002	Rune
6,054,928 A	4/2000	Lemelson	6,441,778 B1	8/2002	Durst et al.
6,064,336 A	5/2000	Krasner	6,442,380 B1	8/2002	Mohindra
6,067,018 A	5/2000	Skelton et al.	6,442,391 B1	8/2002	Johansson et al.
6,067,044 A	5/2000	Whelan et al.	6,443,890 B1	9/2002	Schulze et al.
6,072,396 A	6/2000	Gaukel	6,445,937 B1	9/2002	daSilva
6,078,290 A	6/2000	McBurney et al.	6,453,237 B1	9/2002	Fuchs et al.
6,083,248 A	7/2000	Thompson	6,463,272 B1	10/2002	Wallace et al.
6,083,353 A	7/2000	Alexander	6,466,821 B1	10/2002	Pianca et al.
6,094,168 A	7/2000	Duffett-Smith et al.	6,469,639 B2	10/2002	Tanenhaus et al.
6,100,806 A	8/2000	Gaukel	6,471,087 B1	10/2002	Shusterman
6,101,710 A	8/2000	Selinger	6,478,736 B1	11/2002	Mault
6,111,540 A	8/2000	Krasner	6,496,775 B2	12/2002	McDonald, Jr. et al.
6,115,595 A	9/2000	Rodal et al.	6,505,048 B1	1/2003	Moles et al.
6,121,921 A	9/2000	Ishigaki	6,505,049 B1	1/2003	Dorenbosch
6,131,067 A	10/2000	Girerd et al.	6,513,532 B2	2/2003	Mault et al.
6,140,863 A	10/2000	Fujisawa	6,522,871 B1	2/2003	Patrick et al.
6,141,570 A	10/2000	O'Neill, Jr. et al.	6,522,889 B1	2/2003	Aarnio
6,144,303 A	11/2000	Federman	6,529,164 B1	3/2003	Carter
6,148,280 A	11/2000	Kramer	6,544,193 B2	4/2003	Abreu
6,154,422 A	11/2000	Shinkawa et al.	6,552,652 B2	4/2003	Beken
6,163,696 A	12/2000	Bi et al.	6,553,336 B1	4/2003	Johnson et al.
6,171,264 B1	1/2001	Bader	6,559,620 B2	5/2003	Zhou et al.
6,172,640 B1	1/2001	Durst et al.	6,569,094 B2	5/2003	Suzuki et al.
6,175,616 B1	1/2001	Light et al.	6,579,231 B1	6/2003	Phipps
			6,579,844 B1	6/2003	Morrison et al.

6,625,437 B1 * 9/2003 Jampolsky et al. 455/405
 6,630,885 B2 10/2003 Hardman et al.
 6,640,085 B1 10/2003 Chatzipetros et al.
 6,650,907 B1 11/2003 Kamperschroer et al.
 6,661,372 B1 12/2003 Girerd et al.
 6,665,534 B1 12/2003 Conklin et al.
 6,679,071 B1 1/2004 Storey et al.
 6,696,982 B2 2/2004 Yoshioka et al.
 6,714,791 B2 3/2004 Friedman
 6,721,542 B1 4/2004 Anttila et al.
 6,741,927 B2 5/2004 Jones
 6,747,675 B1 6/2004 Abbott et al.
 6,748,318 B1 6/2004 Jones
 6,788,766 B2 9/2004 Logan
 6,801,853 B2 10/2004 Workman
 6,804,606 B2 10/2004 Jones
 6,847,892 B2 1/2005 Zhou et al.
 6,856,804 B1 2/2005 Ciotta
 6,865,385 B1 3/2005 Kohda et al.
 6,937,900 B1 8/2005 Pianca et al.
 6,952,645 B1 10/2005 Jones
 6,975,941 B1 12/2005 Lau et al.
 6,980,826 B2 12/2005 Yamaguchi
 7,010,144 B1 3/2006 Davis et al.
 7,071,842 B1 7/2006 Brady, Jr.
 7,085,253 B2 8/2006 Yang
 7,110,773 B1 9/2006 Wallace et al.
 7,136,832 B2 11/2006 Li et al.
 7,187,278 B2 3/2007 Biffar
 7,212,829 B1 5/2007 Lau et al.
 7,218,938 B1 5/2007 Lau et al.
 7,253,731 B2 8/2007 Joao
 7,321,774 B1 1/2008 Lau et al.
 7,366,522 B2 * 4/2008 Thomas 455/456.1
 7,403,972 B1 7/2008 Lau et al.
 7,539,557 B2 5/2009 Yamauchi
 7,809,377 B1 10/2010 Lau et al.
 7,905,832 B1 3/2011 Lau et al.
 7,953,809 B2 5/2011 Lau et al.
 8,176,135 B2 5/2012 Lau et al.
 2001/0006891 A1 7/2001 Cho
 2001/0020204 A1 9/2001 Runyon et al.
 2001/0027378 A1 10/2001 Tennison et al.
 2001/0028304 A1 10/2001 I'Anson et al.
 2001/0044299 A1 11/2001 Sandegren
 2001/0044332 A1 11/2001 Yamada et al.
 2001/0052849 A1 12/2001 Jones, Jr.
 2002/0000930 A1 1/2002 Crowson et al.
 2002/0016173 A1 2/2002 Hunzinger
 2002/0027507 A1 3/2002 Yarin et al.
 2002/0036593 A1 3/2002 Ying
 2002/0038182 A1 3/2002 Wong et al.
 2002/0049742 A1 4/2002 Chan et al.
 2002/0050945 A1 5/2002 Tsukishima et al.
 2002/0057192 A1 5/2002 Eagleson et al.
 2002/0063622 A1 5/2002 Armstrong et al.
 2002/0071677 A1 6/2002 Sumanaweera
 2002/0077080 A1 6/2002 Greene
 2002/0087260 A1 7/2002 Hancock et al.
 2002/0087619 A1 7/2002 Tripathi
 2002/0094067 A1 7/2002 August
 2002/0111171 A1 8/2002 Boesch et al.
 2002/0111819 A1 8/2002 Li et al.
 2002/0115453 A1 8/2002 Poulin et al.
 2002/0119770 A1 8/2002 Twitchell, Jr.
 2002/0119789 A1 8/2002 Friedman
 2002/0120475 A1 8/2002 Morimoto
 2002/0140081 A1 10/2002 Chou et al.
 2002/0193121 A1 12/2002 Nowak et al.
 2003/0003943 A1 1/2003 Bajikar
 2003/0009410 A1 1/2003 Ramankutty et al.
 2003/0013445 A1 1/2003 Fujiwara et al.
 2003/0069759 A1 4/2003 Smith
 2003/0151507 A1 8/2003 Andre et al.
 2003/0163287 A1 8/2003 Vock
 2003/0204132 A1 10/2003 Suzuki et al.
 2004/0034470 A1 2/2004 Workman
 2004/0046637 A1 3/2004 Wesby Van Swaay
 2004/0114731 A1 6/2004 Gillett et al.

2004/0117108 A1 6/2004 Nemeth
 2004/0233065 A1 11/2004 Freeman
 2006/0173444 A1 8/2006 Choy et al.
 2007/0156286 A1 7/2007 Yamauchi
 2008/0021645 A1 1/2008 Lau et al.
 2008/0261636 A1 10/2008 Lau et al.
 2009/0042540 A1 2/2009 Bodnar et al.
 2011/0022533 A1 1/2011 Lau et al.
 2011/0223884 A1 9/2011 Lau et al.

FOREIGN PATENT DOCUMENTS

EP 1 037 447 A2 9/2000
 EP 1 037 447 A3 10/2001
 JP 11-64482 3/1999
 JP 11-258325 9/1999
 JP 11-289574 10/1999
 JP 11-306491 11/1999
 WO WO 97/14054 4/1997
 WO WO 97/41654 11/1997
 WO WO 98/01769 A1 1/1998
 WO WO 98/16045 4/1998
 WO WO 98/40837 9/1998
 WO WO 00/51391 8/2000
 WO WO 01/45343 A2 6/2001
 WO WO 01/50151 A1 7/2001
 WO WO 01/63318 A1 8/2001
 WO WO 01/75700 A2 10/2001
 WO WO 02/42979 A1 5/2002
 WO WO 02/084618 A1 10/2002
 WO WO 03/012720 A1 2/2003

OTHER PUBLICATIONS

"352C22 Miniature Low Profile ICP Accelerometer," Precision Accelerometers, PCB Piezoelectronics Products—SVS Division, webpages, pp. 1-2 (downloaded Apr. 11, 2002: www.pcb.com/products/svs/svs352c22.html).
 "3G Mobile Internet Revolution, . . . only with Location Based Services!" pp. 1, (downloaded Aug. 10, 2002: <http://webhome.idirect.com/~dental/3glocator/home.htm>).
 "Airline Cargo Containers," Case Study, RJI Incorporated, webpages, pp. 1-2 (downloaded Mar. 16, 2002: www.rji.cc/casestudies/airlinecargocontainers.html).
 "Airline Food Carts," Case Study, RJI Incorporated, webpages, pp. 1-2 (downloaded Mar. 16, 2002: www.rji.cc/casestudies/airlinefoodcarts.html).
 "An Introduction to SnapTrack Server-Aided GPS Technology," SnapTrack Inc.
 "Audiovox Intros GPS, Bluetooth Phone," INT Media Group, Inc. (allNetDevices), Apr. 5, 2002. (downloaded: www.allnetdevices.com/wireless/news/2001/1/15/audiovox_intros.html).
 "Carrier and end-user applications for wireless location systems," TruePosition, Inc., pp. 1-7.
 "Danger -Products" and "Hiphop Communicator Brochure," Danger, Inc., downloaded Oct. 26, 2003: www.danger.com/products.php.
 "Developing a GPSs for the Global Supply Chain," Aberdeen Group, Inc., Executive White Paper, Jun. 2002.
 "Devices for Text Messages in Deutsche Telekom's fixed network have already found their way into many households," Deutsche Telekom AG, Press Release, Mar. 13, 2002, pp. 1-2.
 "Digital/Analog Compass Sensors" and "1655 Digital Compass Sensor," webpages, The Robson Company, Inc., pp. 1-2 (downloaded Apr. 11, 2002: www.dinsmoresensors.com/index.html).
 "EarthTrack™ Vehicle Tracking Systems," Outfitter Satellite, Inc., 1998 (downloaded Jan. 22, 2000).
 "Enhanced Tracking," United Parcel Service of America, Inc. (UPS), webpages, pp. 1-2 (downloaded Jun. 1, 2002: www.ups.com/myupsinfo/info/etrack?pnav=stdservice).
 "Fleet Management Systems-Asset Tracking Devices," Axiom Navigation Inc., 2000-2001 (downloaded Oct. 19, 2002: www.axiomnav.com/Prod_Systems/prod_system.asp).
 "Frozen Food Warehouse," Case Study, RJI Incorporated, webpages, pp. 1-3 (downloaded Mar. 16, 2002: www.rji.cc/casestudies/frozenfoodwarehouse.html).

- "FunMail Launches on the NTT DoCoMo i-mode network," FunMail, Press Release, May 1, 2001, pp. 1-2.
- "Global Cell Phone Location," Axiom Navigation Inc., 2000-2001 (downloaded Oct. 19, 2002: www.axiomnav.com/Prod_Global/prod_global.asp).
- "Global Locating Services," SkyBitz, webpage, p. 1, (downloaded Nov. 15, 2002: www.skybitz.com/services/gls.html).
- "GLS Communicator," SkyBitz, webpages, pp. 1-2, (downloaded Nov. 15, 2002: www.skybitz.com/gls/communicator.html).
- "Guide to Tracking Info.," Nippon Express, website page, p. 1 (downloaded Jun. 9, 2002: www.nittsu.co.jp/edoc/howtoe.htm).
- "Introduction to SMS," by C. Tull of Anywhere YouGo.com, pp. 1-4 (downloaded: www.devx.com/wireless/articles/SMS/SMSintro-asp).
- "IO Data Develops GPS Adapter for I-Mode Mobile," AsiaBizTech, Sep. 17, 2002, pp. 1-2.
- "Locate Networks: Our Service," Locate Networks, webpages, pp. 1-7 (downloaded Sep. 26, 2002: www.locatenetworks.com/).
- "MMS phones: Don't believe the hype," CNN.com/SCI-TECH, Aug. 8, 2002, pp. 1-3.
- "Mobile Location Based Services: Cell Tracking Devices of People & Thongs . . ." pp. 1-2, (downloaded Aug. 10, 2002: <http://3glocate.com>).
- "MoniTrack," Case Study, RJI Incorporated, webpages, pp. 1-2 (downloaded Mar. 16, 2002: www.rji.cc/technology/telematic.html).
- "MY UPS.COM Benefits," United Parcel Service of America, Inc. (UPS), webpage, p. 1 (downloaded Apr. 13, 2002: www.ups.com/myupsinfo/info/benefits?pnav=stdsservice).
- "NavMate® Navigation System," Visteon Corporation, webpage, pp. 1-2 (downloaded Jun. 21, 2002: www.visteon.com/technology/automotive/navmate.html).
- "News," SkyBitz, webpages, pp. 1-8, (downloaded Nov. 15, 2002: www.skybitz.com/about/news.html).
- "Pakhound: Your Watchdog In The Shipping Industry," website pages, pp. 1-3 (downloaded Jun. 9, 2002: www.pakhound.com/fact.asp).
- "Parkwatch and Wherenet Unveil the First Amusement Visitor Locating system," ParkWatch, Press Release, Jun. 27, 2000.
- "pulver.com's Location Based Services Report," pulver.com, Inc., Oct. 2001, pp. 1-17 (downloaded Jun. 4, 2002: www.pulver.com/lbsreport/lastbsreport.02/oct01.txt).
- "Radio Frequency Identification (RFID)," Case Study, RJI Incorporated, webpage, p. 1 (downloaded Mar. 16, 2002: www.rji.cc/technology/rfid.html).
- "Real Time Location System (RTLS)," Case Study, RJI Incorporated, webpage, p. 1 (downloaded Mar. 16, 2002: www.rji.cc/technology/rtls.html).
- "Real-Time Warehouse Tracking," Case Study, RJI Incorporated, webpages, pp. 1-2 (downloaded Mar. 16, 2002: www.rji.cc/casestudies/rtwarehousetracking.html).
- "Savi Reusable Transport Container," Savi Technology, Inc., Apr. 30, 2002, pp. 1-2.
- "Send images to i-mode phones," Mobile Media Japan, 2001, pp. 1-3.
- "Ski Rental with Auto ID and Tracking," Case Study, RJI Incorporated, webpages, pp. 1-2 (downloaded Mar. 16, 2002: www.rji.cc/casestudies/skirentalcompany.html).
- "SnapTrack and SignalSoft Corp. Team Up to Trial Location-based Information Service for GSM Test Group," Press Release, SnapTrack Inc., Dec. 6, 1999.
- "SnapTrack Awarded Additional Key Patents for Enhanced GPS System," Press Release, SnapTrack Inc., Jan. 4, 2000.
- "Start-up crams single chip with phone, GPS and Bluetooth," CNET Network, Inc. (ZDNET), Mar. 22, 2002 (downloaded: <http://news.zdnet.co.uk/story/0,t284-x2107163,00.html>).
- "Status Icons/Messages," Yahoo! Messenger Help, Yahoo! Inc., 2002, pp. 1-2.
- "Technical Applications of Our Current Technology," Aetherwire, webpages, pp. 1-4 (downloaded Mar. 16, 2002: www.aetherwire.com/CDROM/General/appl1.html).
- "The Always on Network," Position Paper, Nortel Networks, 2002.
- "Theme Park Visitors & Cashless Purchasing," Case Study, RJI Incorporated, webpages, pp. 1-2 (downloaded Mar. 16, 2002: www.rji.cc/casestudies/themepark.html).
- "Track Shipments—Detailed Results," FedEx, webpages, pp. 1-2 (downloaded Oct. 29, 2002: www.fedex.com).
- "Track Your FedEx Shipments via Email," FedEx, webpages, pp. 1-2 (downloaded Oct. 29, 2002: www.fedex.com).
- "Tracking Helpful Tips," United Parcel Service of America, Inc. (UPS), webpages, pp. 1-2 (downloaded Jun. 1, 2002: www.ups.com/tracking/nm_help.html).
- "Trimble and Rosum Team to Develop Universal Positioning Technology," Trimble Navigation, Inc., News Release, Feb. 27, 2003.
- "Turning Position Into Knowledge," SkyBitz, webpage, p. 1, (downloaded Nov. 15, 2002: www.skybitz.com).
- "UPS Package Tracking," United Parcel Service of America, Inc. (UPS), webpages, pp. 1-2 (downloaded Apr. 13, 2002: www.ups.com/tracking/tracking.html).
- "UPS Wireless Solutions," United Parcel Service of America, Inc. (UPS), webpage, p. 1 (downloaded Apr. 13, 2002: www.ups.com/myupsinfo/info/wireless?pnav=stdsservice).
- "Welcome to Iship, Inc.," iShip, Inc., webpages, pp. 1-2, (downloaded Jun. 9, 2002: www.iship.com/).
- "Welcome to Traker Systems," Tracker Systems, webpages, pp. 1-2 (downloaded Jun. 9, 2002: www.trakersystems.com).
- "What are Instant Messages?" Yahoo! Messenger Help, Yahoo! Inc., 2002, pp. 1.
- "What is "3G" technology?," CNN.com/SCI-TECH, Oct. 22, 2001, pp. 1-3.
- "What is a Friend List?" Yahoo! Messenger Help, Yahoo! Inc., 2002, pp. 1.
- "Wherify Wireless and SiRF Team to Deliver Child Locator System," Wherify Wireless, Inc., Press Release, Mar. 19, 2001, pp. 1-2.
- "Wherify Wireless Breakthrough in Location-Based Services," Mobilemag.com, Feb. 28, 2001, p. 1.
- "Wherify Wireless GPS Locator for Kids User Guide," Wherify Wireless, Inc., 2003, pp. 1-106.
- "Wherify Wireless Location Services," Wherify Wireless, Inc., webpages, pp. 1-5 (downloaded: Mar. 25, 2003: www.wherifywireless.com/prod_watches.htm).
- "X-GPS™—Hybrid GPS Location Server Solution," Axiom Navigation Inc., 2000-2001 (downloaded Oct. 19, 2002: www.axiomnav.com/Prod_Global/x-gps.asp).
- "Yahoo! Messenger—Sending Messages to a Mobile Phone," Yahoo! Messenger, Yahoo! Inc., 2002, pp. 1-7 (downloaded Oct. 27, 2002: [http://messenger.yahoo.com/messenger/wireless/pc2sms/tour1.html\(through/tour7.html\)](http://messenger.yahoo.com/messenger/wireless/pc2sms/tour1.html(through/tour7.html))).
- "Yahoo! Messenger for Text Messaging," Yahoo! Messenger, Yahoo! Inc., 2002, pp. 1-10 (downloaded Oct. 27, 2002: [http://messenger.yahoo.com/messenger/wireless/smsmsgsr/tour1.html\(through/tour7.html\)](http://messenger.yahoo.com/messenger/wireless/smsmsgsr/tour1.html(through/tour7.html))).
- "Yahoo! Messenger for WAP," Yahoo Messenger, Yahoo! Inc., 2002 (tours 1-9), pp. 1-17 (downloaded Oct. 27, 2002: [www.messenger.yahoo.com/messenger/wireless/wap/tour1.html\(through/tour9.html\)](http://www.messenger.yahoo.com/messenger/wireless/wap/tour1.html(through/tour9.html))).
- Accelerometers—General Purpose, LP Series, Crossbow Technology, Inc., data sheet, pp. 1-3 (downloaded Apr. 11, 2002: www.xbow.com/Products/Accelerometers.htm).
- Bickers, "Eyes in the sky," SafeTzone Technology Corporation, webpages, 2001, pp. 1-3 (downloaded: www.safetzone.com/newsKiosk.asp).
- Chertkoff, Rachel, "Vehicle Locator Systems," Pager Technology, pp. 1-2, 1998.
- Commercial Uses for LoJack (webpage), LoJack Corporation, downloaded Jan. 22, 2000.
- Crossbow Product Guide—Accelerometers, Crossbow Technology, Inc., webpages, pp. 1-3 (downloaded Apr. 11, 2002: www.xbow.com/Products/Accelerometers.htm).
- Delphi and MobileAria Demonstrate True Hands Free In-Vehicle Mobile Productivity Services At CES, Press Release, Delphi Automotive Systems, Jan. 8, 2002 (downloaded Apr. 5, 2002: www.delphiauto.com/news/pressRelease/pr6828-01082002).
- F. Rivera, "Special Report: Keeping Tabs on Your Teen," 7 News, Boston, Apr. 30, 2002, pp. 1-3.
- FedEx Insight, FedEx, webpages, pp. 1-11 (downloaded Oct. 29, 2002: www.fedex.com).

- GPS2000, Omega Research and Development, Inc., webpages, pp. 1-9 (pp. 7-9 pertain to an online tour) (downloaded Jul. 14, 2003: www.gps2000online.com/).
- IMVironment, Yahoo! Messenger Yahoo! Inc., 2002, pp. 1-12 (downloaded (including) Oct. 27, 2002: [http://help.yahoo.com/help/us/mesg/imv/imv-01.html\(through/index5.html\)](http://help.yahoo.com/help/us/mesg/imv/imv-01.html(through/index5.html))).
- J.Wrolstad, "Chrysler Claims First With Bluetooth Mobile Phone System," Wireless Newsfactor, Oct. 26, 2001.
- K. Hill, "Prada Uses Smart Tags to Personalize Shopping," CRMDaily.com, Apr. 24, 2002., pp. 1-4.
- K. Miyake, "Sharp to unveil 3G PDA-type cell phone," ITworld.com, Inc., Jan. 11, 2002.
- Kleinknecht, William, "Juvenile authorities want satellite tracking for felons," The Star-Ledger of New Jersey, Nov. 18, 1997.
- LoadTrak, pp. 1-2 (downloaded Jun. 4, 2002: www.load-trak.com).
- Marek, "The Unstoppable SnapTrack," Wireless Week, Dec. 18, 2000.
- Motorola Consumer Catalog: Pagers (webpage), Motorola, Inc., downloaded Jan. 19, 2000.
- My.Roadway!, Roadway Express, Inc., webpages, pp. 1-2, (downloaded Jun. 9, 2002: www.quiktrak.roadway.com/cgi-bin/quiktrak).
- Packtrack™, PackTrack.com, webpages, pp. 1-2 (downloaded Jun. 9, 2002: www.packtrack.com).
- Precision Accelerometers, PCB Piezoelectronics Products—SVS Division, webpages, pp. 1-2 (downloaded Apr. 11, 2002: www.pcb.com/products/svs/index.html).
- Rabinowitz and Spilker, Jr., "A New Positioning System Using Television Synchronization Signals," Rosum Corporation, pp. 1-11 (downloaded May 21, 2003).
- Rabinowitz and Spilker, Jr., "Positioning Using the ATSC Digital Television Signal," Rosum Corporation Whitepaper, Rosum Corporation (downloaded May 21, 2003).
- Real Time Locating System, Executive Summary, Technology Systems International, Inc.
- Ryan, "Catching up with Dick Tracy," San Francisco Chronicle, news article, Mar. 18, 2002.
- SandPiper GPS Receiver, Specification sheet by Axiom Navigation Inc. (www.axiomnav.com).
- Smart Antenna, Specification sheet by Axiom Navigation Inc. (www.axiomnav.com).
- SnapTrack—Privacy Protection (webpage), SnapTrack Inc., downloaded Jan. 19, 2000.
- SnapTrack—Technology At Work (webpage), SnapTrack Inc., downloaded Jan. 19, 2000.
- SnapTrack in Action (webpage), SnapTrack Inc., downloaded Jan. 19, 2000.
- Stilp, Louis A., "Examining the Coming Revolution in Location Services," pp. 1-11.
- Swift A2 GPS Receiver, Specification sheet by Axiom Navigation Inc. (www.axiomnav.com).
- Swift B2 GPS Receiver, Specification sheet by Axiom Navigation Inc. (www.axiomnav.com).
- TruePosition Virtual Brochure (webpage), TruePosition, Inc.
- Wong, "Fishers, golfers join the rush to GPS," San Jose Mercury News, news article, Mar. 25, 2002.
- Appenzeller, et al., "The Mobile People Architecture", Technical Report: CSL-TR-00000, Computer Systems Laboratory, Departments of Electrical Engineering and Computer Science, Stanford University, Jan. 1999, pp. 1-13.
- Calsyn, Martin and Desseault, Lisa, "Presence Information Protocol Requirements," Internet Draft, Feb. 9, 1998, pp. 1-27.
- J. Rosenberg, H. Schulzrinne, Internet Draft, "SIP for Presence," <http://www.alternic.org/drafts/drafts-r-s/draft-rosenberg=sip-pip-00.txt>, Nov. 13, 1998, Bell Laboratories, Columbia, pp. 1-31.
- Office Action for U.S. Appl. No. 09/797,517, dated Jul. 31, 2003.
- Office Action for U.S. Appl. No. 09/797,517, dated Jan. 28, 2004.
- Office Action for U.S. Appl. No. 09/797,517, dated Jun. 4, 2004.
- Office Action for U.S. Appl. No. 09/797,517, dated Feb. 18, 2005.
- Office Action for U.S. Appl. No. 09/797,517, dated Sep. 12, 2005.
- Advisory Action for U.S. Appl. No. 09/797,517, dated Dec. 16, 2005.
- Advisory Action for U.S. Appl. No. 09/797,517, dated Mar. 20, 2006.
- Office Action for U.S. Appl. No. 09/797,517, dated Jun. 5, 2006.
- Office Action for U.S. Appl. No. 09/797,517, dated Dec. 20, 2006.
- Office Action for U.S. Appl. No. 09/797,517, dated Jul. 17, 2007.
- Office Action for U.S. Appl. No. 09/797,517, dated Oct. 11, 2007.
- U.S. Appl. No. 12/150,203 filed Apr. 28, 2008.
- Office Action for U.S. Appl. No. 12/150,203 dated May 6, 2010.
- Office Action for U.S. Appl. No. 12/150,203, dated Nov. 12, 2010.
- First Amended Complaint for Patent Infringement, EDTX, Case 1:10-cv-00547-RC, filed Sep. 24, 2010, pp. 1-29.
- Complaint for Patent Infringement, NDCA, Case cv10-04755V HRL, filed Oct. 20, 2010, pp. 1-22, including Exhibit 17 (60 pgs.), Exhibit 27 (57 pgs.), and Exhibit 38 (54 pgs.) [total 193 pgs.].
- Amended Complaint for Patent Infringement, NDCA, Case No. cv10-4755 JSW, filed Feb. 4, 2011, pp. 1-23.
- Answer to Amended Complaint (AT&T), NDCA, Case No. cv10-4755 JSW, filed Feb. 18, 2011, pp. 1-15.
- Answer to Amended Complaint (Sprint), NDCA, Case No. cv10-4755 JSW, filed Feb. 18, 2011, pp. 1-15.
- Answer to Amended Complaint (Verizon), NDCA, Case No. cv10-4755 JSW, filed Feb. 18, 2011, pp. 1-22.
- Danger Product Overview, 5 pgs., Danger, Inc., est. 2001.
- PCVtrak™ Installation and Operator's Manual, Trimble Navigation, 24623-00 Rev. A, May 1994, pp. 1-259.
- "Advanced Traveler Aid Systems for Public Transportation," Final Report, Federal Transit Administration, Sep. 1994, pp. 1-131.
- Campbell, Laurel, "SECURITY—Military satellite enlisted to thwart car crime," The Commercial Appeal, Sep. 26, 1996, pp. 5B.
- Law, Alex, "Week in Wheels/ . . . From a Driver's Notebook," Newsday, Inc., Sep. 20, 1996, pp. C03.
- Cortez, Angela, "Springs police can track thief, vehicles," The Denver Post, Sep. 10, 1996, pp. B-01.
- "OnGuard Tracker Nabs Auto Burglar," Global Positioning & Navigation News, vol. 6, No. 16, Aug. 8, 1996.
- "OnGuard Tracker Nabs Auto Burglar," Section: Financial News, PR Newswire, Jul. 29, 1996.
- Nauman, Matt, "Pressing the Panic Button: Car Security Enters a New Age with Cellular Phones and Satellites that Watch Over You," San Jose Mercury News, Jun. 21, 1996, pp. 1G.
- "Monday Briefing" San Antonio Express-News, p. 1, Part B, Jun. 10, 1996.
- "OnGuard Tracker Makes Debut on 'One Lap of America'," PR Newswire, Jun. 7, 1996.
- "OnGuard Tracker Makes Debut on 'One Lap of America'," Southwest Newswire, Jun. 7, 1996.
- Dominguez, Raul, "Women get their day in sun—American Golf planning events nationwide May 18," San Antonion Express-News, Apr. 18, 1996, pp. 2, part B.
- "Vehicle Navigation Units Being Measured in Luxury Autos," Global Positioning & Navigation News, vol. 6, No. 7, Apr. 4, 1996.
- "Advanced Business Sciences, Inc. Announces Completion of Acquisition of Comguard of Illinois," Business Wire, Aug. 26, 1998.
- "Advanced Business Sciences, Inc. Announces Filing With Securities and Exchange Commission," Business Wire, Jun. 25, 1999.
- "Advanced Business Sciences, Inc. Announces Preliminary Fourth Quarter 1998 Revenue Results," Business Wire, Feb. 4, 1999.
- "Business People Burnsby's Grill Names Two," Omaha World-Herald, Section Business, p. 4M, Oct. 20, 1996.
- "Company Sees Prisoner Tracking and Monitoring Market Niche," Global Positioning & Navigation News, vol. 6, No. 10, May 16, 1996.
- GPS-Based Personal Monitoring Systems Offered to Corrections, Private Market, Global Positioning & Navigation News, vol. 8, No. 11, Jun. 3, 1998.
- GPS tracks parolees, probationers, Corrections Professional, vol. 5, No. 6, Nov. 19, 1999.
- High-Tech System Tracks Offenders—Satellites Watching Criminals, Business Wire, Nov. 14, 1997.
- Briefs, Global Positioning & Navigation News, vol. 9, No. 4, Feb. 24, 1999.
- Dunkelberger, Lloyd, "Lawmakers question criminal-tracking system," Sarasota Herald-Tribune (Florida), pp. 16A, Nov. 28, 1999.
- Powell, Barbara, "New gadgets help drivers find their way," Fort Worth Star-Telegram (Texas), p. 1, Jan. 20, 1997.
- "New Service Lets Corrections Agencies Track Offenders by Satellite," PR Newswire, Jan. 11, 1999.

- "New Service Lets Corrections Agencies Track Offenders by Satellite; SecurityLink Offers "GPS" Tracking for Offenders on Electronic Monitoring—Sandusky Municipal Court Adopts Technology for Local Offenders," PR Newswire, Jan. 12, 1999.
- "New Service Lets Corrections Agencies Track Offenders by Satellite; SecurityLink Offers "GPS" Tracking for Offenders on Electronic Monitoring," PR Newswire, Section: Financial News, Jan. 11, 1999.
- "New Service Lets Corrections Agencies Track Offenders by Satellite," Satellite Today, vol. 2, No. 8, Jan. 13, 1999.
- "Prisoner Security Monitoring Company Grabs Contracts for GPS-Based System," Global Positioning & Navigation News, vol. 7, No. 1, Jan. 15, 1997.
- Atwater, Andi, "Proposal seeking 24-hour tracking of all sex offenders," The News-Press (Fort Meyers, FL), pp. 1A, Feb. 20, 2000.
- Briefs, Global Positioning & Navigation News, vol. 9, No. 3, Feb. 10, 1999.
- Brauer, David, "Satellite 'Big Brother' Tracks Ex-Inmates; Agencies Experiment with GPS to Monitor Parolee Whereabouts," Chicago Tribune, Section: News, p. 31, Dec. 18, 1998.
- "Satellite Spotlight; Eye in the Sky to Monitor Parolees," Satellite News, vol. 21, No. 15, Apr. 13, 1998.
- "Satellite Spotlight: Fighting Crime From Space," Satellite News, vol. 19, No. 20, May 13, 1996.
- Prohaska, Thomas J, "Satellite Will Keep Tabs on Convicts," Buffalo News (New York), Section: Local, p. 5B, Sep. 20, 1999.
- "Sierra Wireless and Pro Tech Team Up on Monitoring Product," Global Positioning & Navigation News, vol. 8, No. 8, Apr. 22, 1998.
- Anderson, Larry, "Technology rules at Securing New Ground," Access Control & Security Systems Integration, Section: Industry Outlook; ISSN 1084-6425, Dec. 1999.
- Trimble Navigation Warns 2nd-Quarter Earnings to Miss Target, Dow Jones Business News, Jul. 10, 1998.
- "Trimble Navigation's Net Income Skidded 93% Amid Order Delays," Dow Jones Business News, Jul. 23, 1998.
- Briefs, Global Positioning & Navigation News, vol. 9, No. 2, Jan. 27, 1999.
- Briefs, Global Positioning & Navigation News, vol. 9, No. 14, Jul. 14, 1999.
- Dailey et al. "Automatic Transit Location System," Final Research Report, 55 pgs., Feb. 1996.
- Maguire, Jr. et al. "SmartBadges: a wearable computer and communication system," codes/CASHE '98, 47 pgs., 1998.
- Koshima et al. "Personal locator services emerge," IEEE Spectrum, Feb. 2000, pp. 41-48.
- Zygowicz et al. "State of the Art in Automatic Vehicle Location Systems," Center for Urban Transportation Studies, University of Wisconsin, Milwaukee, Feb. 1998.
- Ashworth, Jon. "Big brother is watching you," The Times (London), Section: Features, May 7, 1999.
- "Car Thieves Take the 'Bait' in Michigan; Two Suspects Reeled in With OnGuard," Business Wire, Sep. 11, 1997.
- Sauer, Matthew, "Company Finds Niche by Giving Directions . . ." Sarasota Herald-Tribune (Florida), Section: Business Weekly, p. 1, Jul. 7, 1997.
- "ATX Technologies Signs Nationwide Service Deal with AT&T," Global Positioning & Navigation News, vol. 7, No. 9, May 7, 1997.
- "Car Thieves Take the 'Bait' in Tulsa; Two Suspects Caught Off Guard with OnGuard Once Again," PR Newswire, Section: Financial News, Jan. 8, 1997.
- "Car Thieves Take the 'Bait' in Tulsa; Two Suspects Caught Off Guard with on Guard," PR Newswire, Section: Financial News, Dec. 9, 1996.
- Jackson, Terry, "Smart Cars Whether by Satellite or the Internet, High-Tech Devices and Services May Make Crumpled Road Maps a Thing of the Past," The Miami Herald, Section: Travel, p. 1J, Oct. 6, 1996.
- "San Antonio Personal Security Company Links Up with Senior PGA Golfer," PR Newswire, Section: Financial News, Apr. 1, 1996.
- "San Antonio Personal Security Company Links Up with Senior PGA Golfer," Southwest Newswire, Apr. 1, 1996.
- Business Briefs, San Antonio Express-News, Mar. 25, 1996.
- "ATX Research Signs Exclusive Sales Agreement with Arizona Company," PR Newswire, Mar. 21, 1996.
- "ATX Research Signs Exclusive Sales Agreement with Arizona Company," Southwest Newswire, Mar. 21, 1996.
- "Automotive GPS Satellite/Safety System Race is on," Southwest Newswire, Feb. 20, 1996.
- "Dealerships Can Track Down New Aftermarket Revenues," PR Newswire, Feb. 9, 1996.
- "ATX Research Unveils New Stealthtrac Capability," PR Newswire, Feb. 9, 1996.
- "Dealerships Can Track Down New Aftermarket Revenues," Southwest Newswire, Feb. 9, 1996.
- Briefs, Global Positioning & Navigation News Wire, vol. 6, No. 2, Jan. 24, 1996.
- "ATX Research Provides Police Departments With OnGuard Personal Security and Vehicle Tracking System," PR Newswire, Jan. 15, 1996.
- "ATX Research Provides Police Departments With OnGuard Personal Security and Vehicle Tracking System," Southwest Newswire, Jan. 15, 1996.
- "ATX Research Relocates to New Corporate Headquarters," PR Newswire, Dec. 12, 1995.
- "ATX Research Relocates to New Corporate Headquarters," Southwest Newswire, Dec. 12, 1995.
- "Texas invention tracks stolen cars, lets driver call for help," The Vancouver Sun, Oct. 20, 1995.
- "San Antonio Company Unveils Satellite/Cellular Personal Security System," PR Newswire, Oct. 3, 1995.
- "San Antonio Company Unveils Satellite/Cellular Personal Security System," Southwest Newswire, Oct. 3, 1995.
- Preliminary Claim Constructions and Supporting Evidence for U.S. Patent No. 7,366,522 Pursuant to Patent L.R. 4-2, NDCA, Case CV 10-04755 JSW, filed Jun. 3, 2011, pp. 1-29, including Exhibit A. Defendants Invalidity Contentions, NDCA, Case 3:10-cv-04755-JSW, filed May 3, 2011, pp. 1-1249, including Exhibit A (60 pgs.), Exhibit B (59 pgs.), Exhibit C (27 pgs.), Exhibit D (26 pgs.), Exhibit E (35 pgs.), Exhibit F (40 pgs.), Exhibit G (31 pgs.), Exhibit H (34 pgs.), Exhibit I (43 pgs.), Exhibit J (44 pgs.), Exhibit K-1 (49 pgs.), Exhibit K-2 (54 pgs.), Exhibit L-1 (50 pgs.), Exhibit L-2 (57 pgs.), Exhibit M1 (45 pgs.), Exhibit M-2 (54 pgs.), Exhibit N-1 (35 pgs.), Exhibit N-2 (51 pgs.), Exhibit O-1 (51 pgs.), Exhibit O-2 (36 pgs.), Exhibit P-1 (40 pgs.), Exhibit P-2 (39 pgs.), Exhibit Q-1 (36 pgs.), Exhibit Q-2 (42 pgs.), Exhibit R-1 (40 pgs.), Exhibit R-2 (43 pgs.), Exhibit S-1 (44 pgs.), Exhibit S-2 (41 pgs.).
- Cellco Partnership's Proposed Terms for Construction, NDCA, Case 3:10-cv-04755-JSW, filed May 13, 2011, pp. 1-4.
- Cellco Partnership's Preliminary Claim Constructions, NDCA, Case 3:10-cv-04755-JSW, filed Jun. 3, 2011, pp. 1-9.
- Amended Final Joint Claim Construction Statement, NDCA, Case 3:10-cv-04755-JSW, filed Sep. 13, 2011, pp. 1-34.
- Defendant AT&T Mobility, LLC's and Spring Spectrum and Nextel Operations' Proposed Terms and Claim Elements for Construction, NDCA, Case 3:10-cv-04755-JSW, filed May 13, 2011, pp. 1-4.
- Defendant AT&T Mobility, LLC's and Sprint Spectrum and Nextel Operations' Exchange of Preliminary Claim Constructions and Extrinsic Evidence, NDCA, Case 3:10-cv-04755, filed Jun. 3, 2011, pp. 1-15.
- Defendant AT&T Mobility LLC's, Sprint Spectrum LP's and Nextel Operations' Responsive Claim Construction Brief, NDCA, Case 3:10-cv-04755-JSW, filed Sep. 2, 2011, pp. 1-210, including Exhibit 1 (13 pgs.), Exhibit 2 (15 pgs.), Exhibit 3 (16 pgs.), Exhibit 4 (14 pgs.), Exhibit 5 (13 pgs.), Exhibit 6 (15 pgs.), Exhibit 7 (12 pgs.), Exhibit 8 (5 pgs.), Exhibit 9 (9 pgs.), Exhibit 10 (2 pgs.), Exhibit 11 (12 pgs.), Exhibit 12 (13 pgs.), Exhibit 13 (12 pgs.), Exhibit 14 (3 pgs.), Exhibit 15 (3 pgs.), Exhibit 16 (4 pgs.).
- Defendants' Objections to IpVenture's Claim Construction Reply Brief Evidence, NDCA, Case 3:10-cv-04755-JSW, filed Sep. 20, 2011, pp. 1-22.
- Plaintiff IpVenture, Inc.'s Reply Claim Construction Brief, NDCA, Case 3:10-cv-04755-JSW, filed Sep. 13, 2011, pp. 1-36.
- Plaintiff IpVenture, Inc.'s First Amended Responses to Defendant AT&T Mobility LLC's Second Set of Interrogatories to Plaintiff (No. 7), NDCA, Case 3:10-cv-04755 JSW, filed Aug. 29, 2011, pp. 1-8.
- Plaintiff IpVenture, Inc.'s Answers to Defendant AT&T Mobility LLC's Third Set of Interrogatories to Plaintiff (No. 10), NDCA, Case 3:10-cv-04755 JSW, filed Aug. 12, 2011, pp. 1-15.

Plaintiff IpVenture, Inc.'s Answers to Defendant AT&T Mobility, LLC's Second Set of Interrogatories (Nos. 7-9), NDCA, Case 3:10-cv-04755 JSW, filed Jun. 7, 2011, pp. 1-10.

Plaintiff IpVenture, Inc.'s Responses to Defendant Cellco Partnership's First Set of Interrogatories (Nos. 1-14), NDCA, Case 3:10-cv-04755 JSW, filed Apr. 18, 2011, pp. 149.

Plaintiff IpVenture, Inc.'s Opening Claim Construction Brief, NDCA, Case No. C 10-04755 JSW, filed Aug. 12, 2011, pp. 1-24.

Docket Listing, NDCA, Case 3:10-cv-04755-JSW, printed Jan. 6, 2012, pp. 1-12.

Notice of Allowance for U.S. Appl. No. 09/797,517, dated Jan. 14, 2008.

Final Office Action for U.S. Appl. No. 12/150,203, dated Apr. 25, 2011.

Archived copy of a page entitled "Money-Back Guarantee Policy" from fedex.com, archived by the Internet Archive on Aug. 17, 2000.

Strom, Stephanie. "A Wild Sleigh Ride at Federal Express." The New York Times, Dec. 20, 1994.

Culler et al., MICA: The Commercialization of Microsensor Motes, Sensors, vol. 19, No. 4 (Apr. 1, 2002).

Darabi et al., A 2.4-GHz CMOS Transceiver for Bluetooth, IEEE Journal of Solid-State Circuits, vol. 36, No. 12 (Dec. 2001).

J. Fraden, Handbook of Modern Sensors, Springer-Verlag (1996).

Grimes, Craig A., et al., Wireless Magnetoelastic Resonance Sensors: A Critical Review, Sensors (Jul. 23, 2002).

Helfenstein et al. Circuits and Systems for Wireless Communications, Kluwer Academic Publishers (2000).

Hill et al., System Architecture Directions for Networked Sensors, ACM/ASPLOS-IX (Nov. 2000).

Madou, Marc J., Fundamentals of Microfabrication, CRC Press (2002).

Mainwaring et al., Wireless Sensor Networks for Habitat Monitoring, ACM (Sep. 28, 2002).

Razavi, Behzad, RF Microelectronics, Prentice Hall (1998).

Rofougaran et al., A Single-Chip 900-MHz Spread-Spectrum Wireless Transceiver in 1- μ m CMOS-Part II: Receiver Design, IEEE Journal of Solid-State Circuits, vol. 33, No. 4 (Apr. 1998).

Senturia, Stephen D., Microsystem Design, Kluwer Academic Publishers (2001).

* cited by examiner

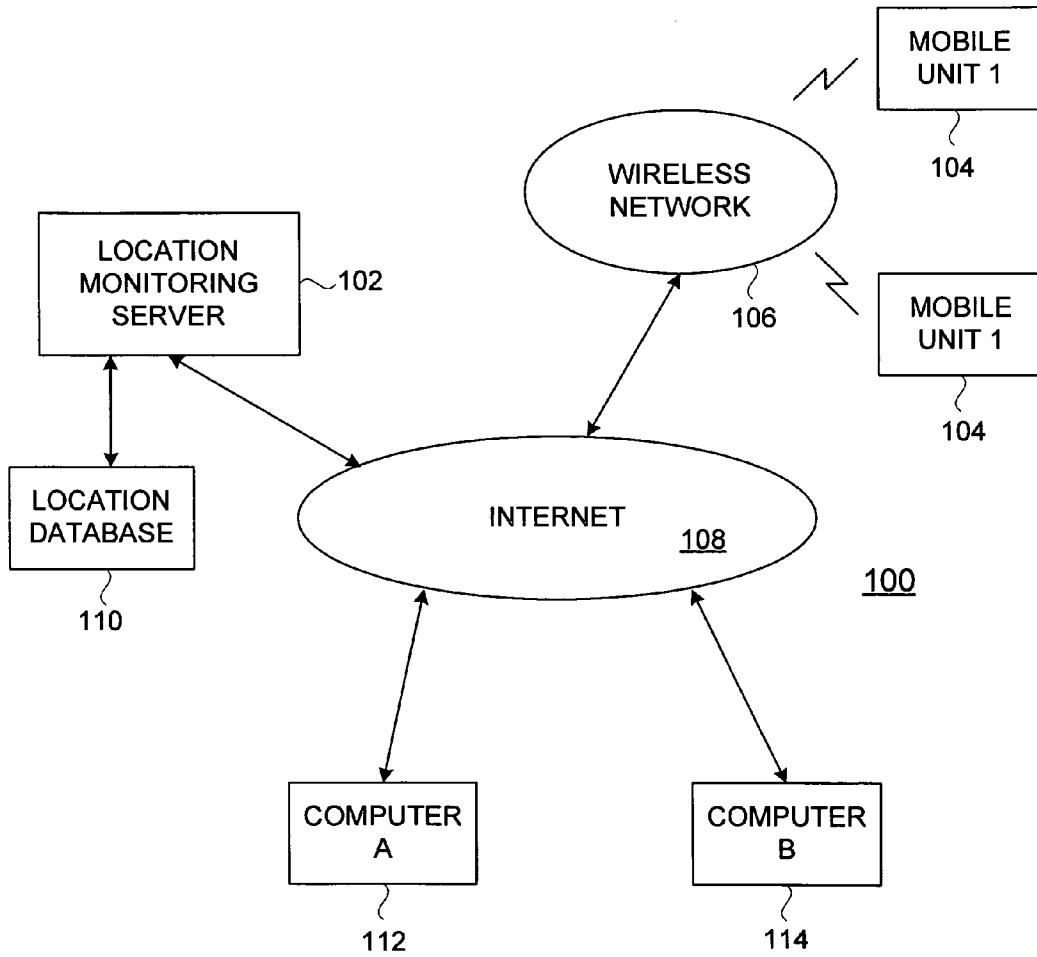


FIG. 1

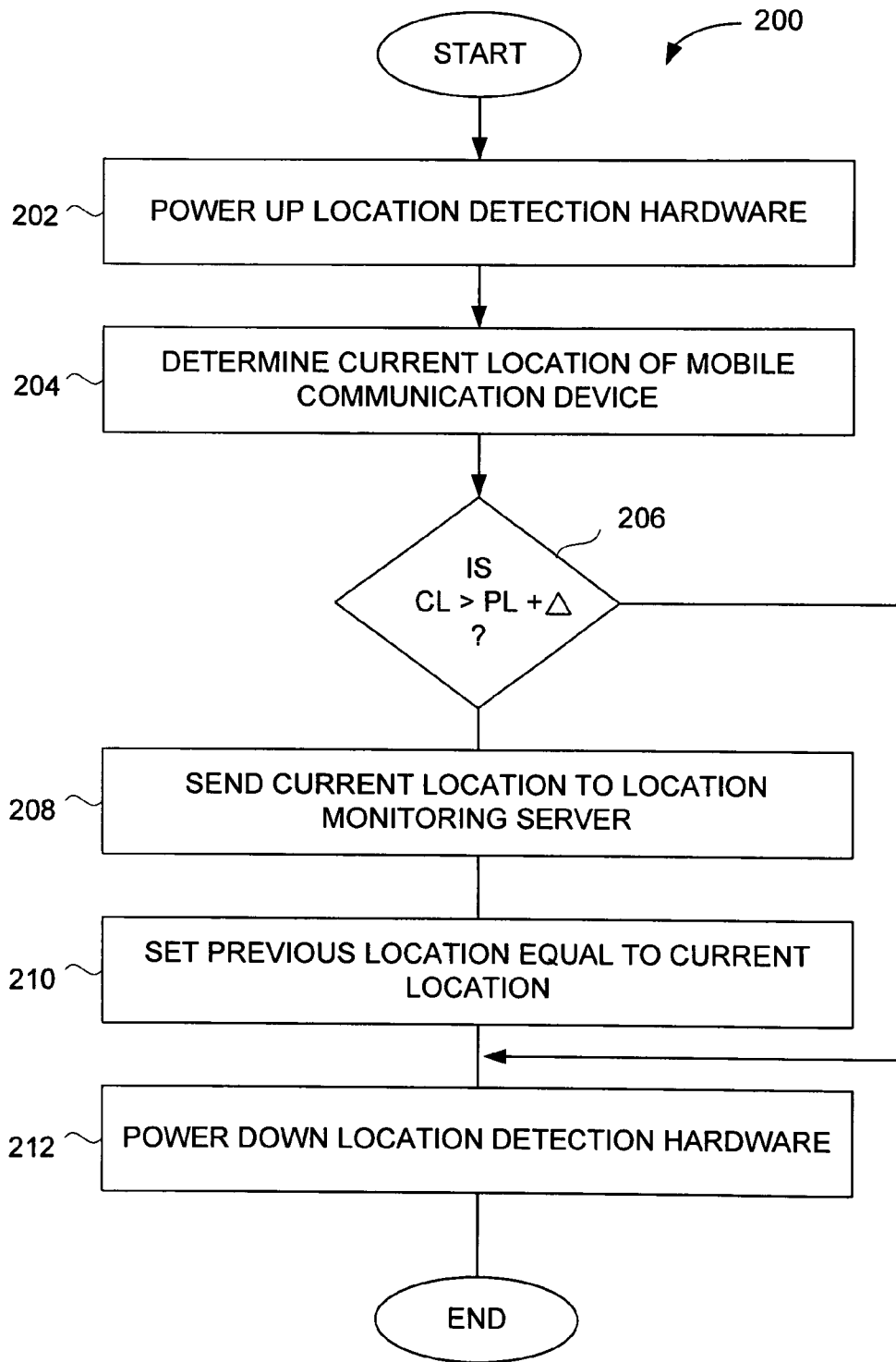


FIG. 2

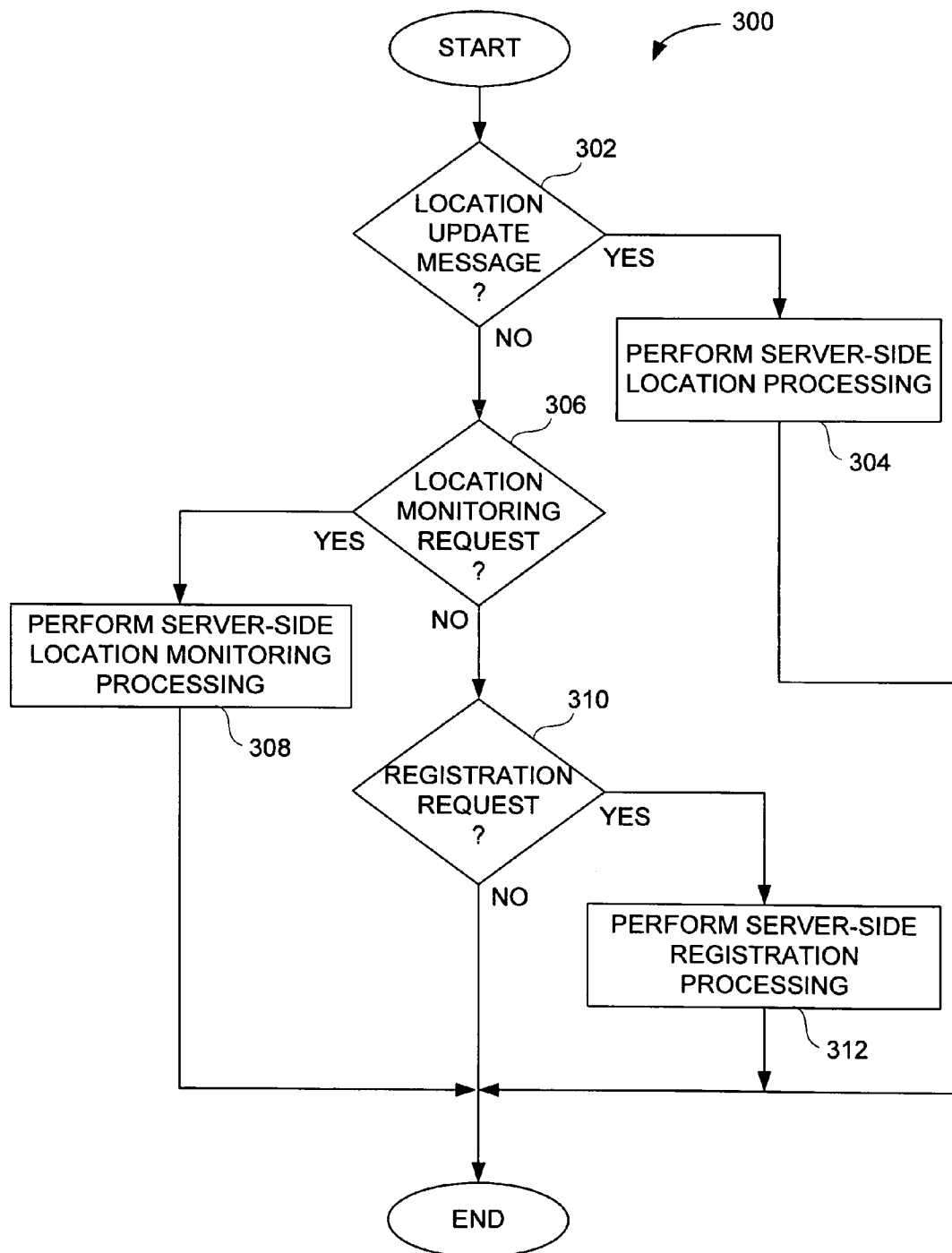


FIG. 3

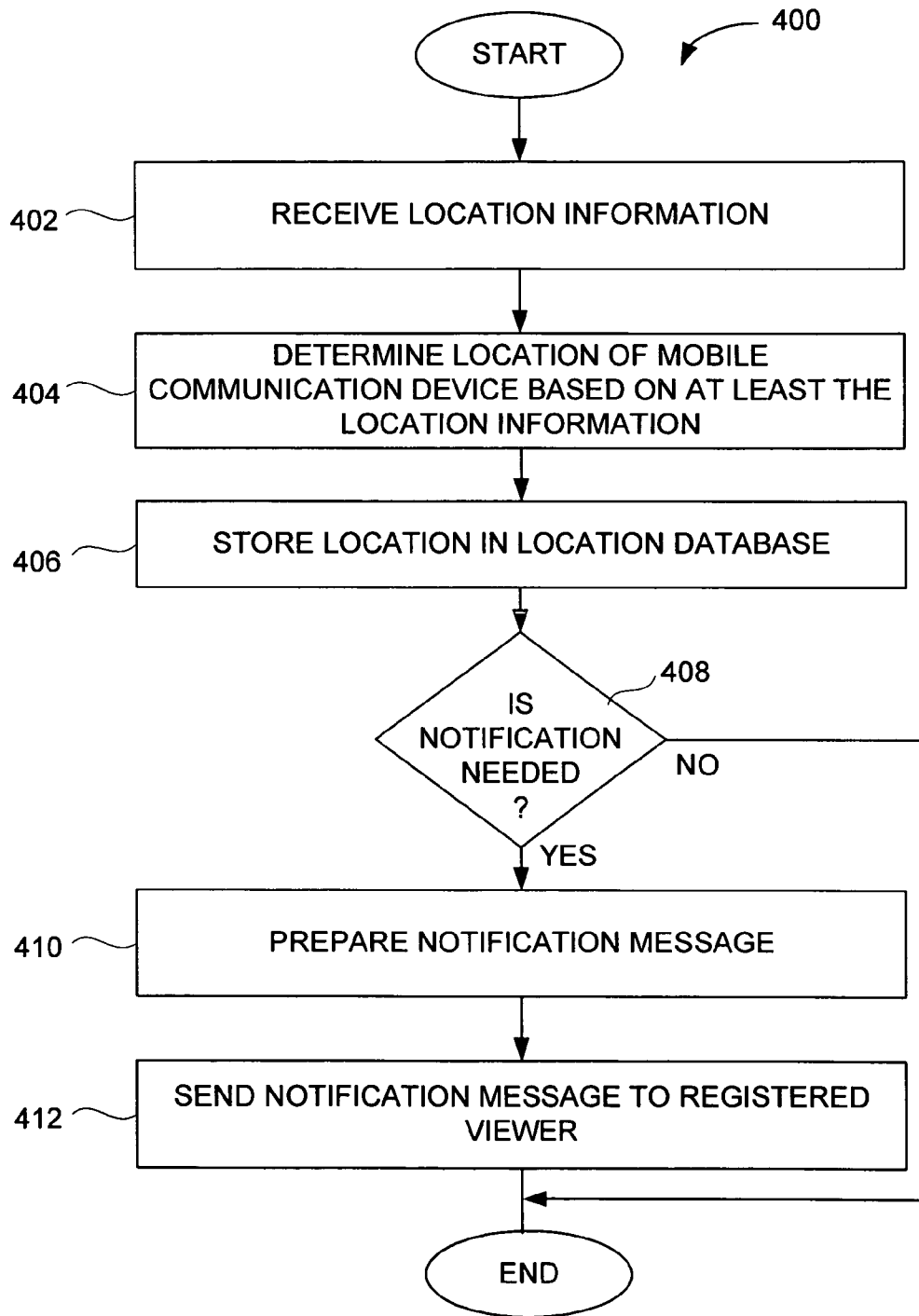


FIG. 4

500

MD	USER	SUPERVISOR	PASSWORD	LOGGED_IN
1	John	Barb	1234	1
2	Jane	Bill	5678	0

FIG. 5A

550

MD	CURRENT LOCATION	PREVIOUS LOCATION
1	XXX	YYY
2	WWW	ZZZ

FIG. 5B

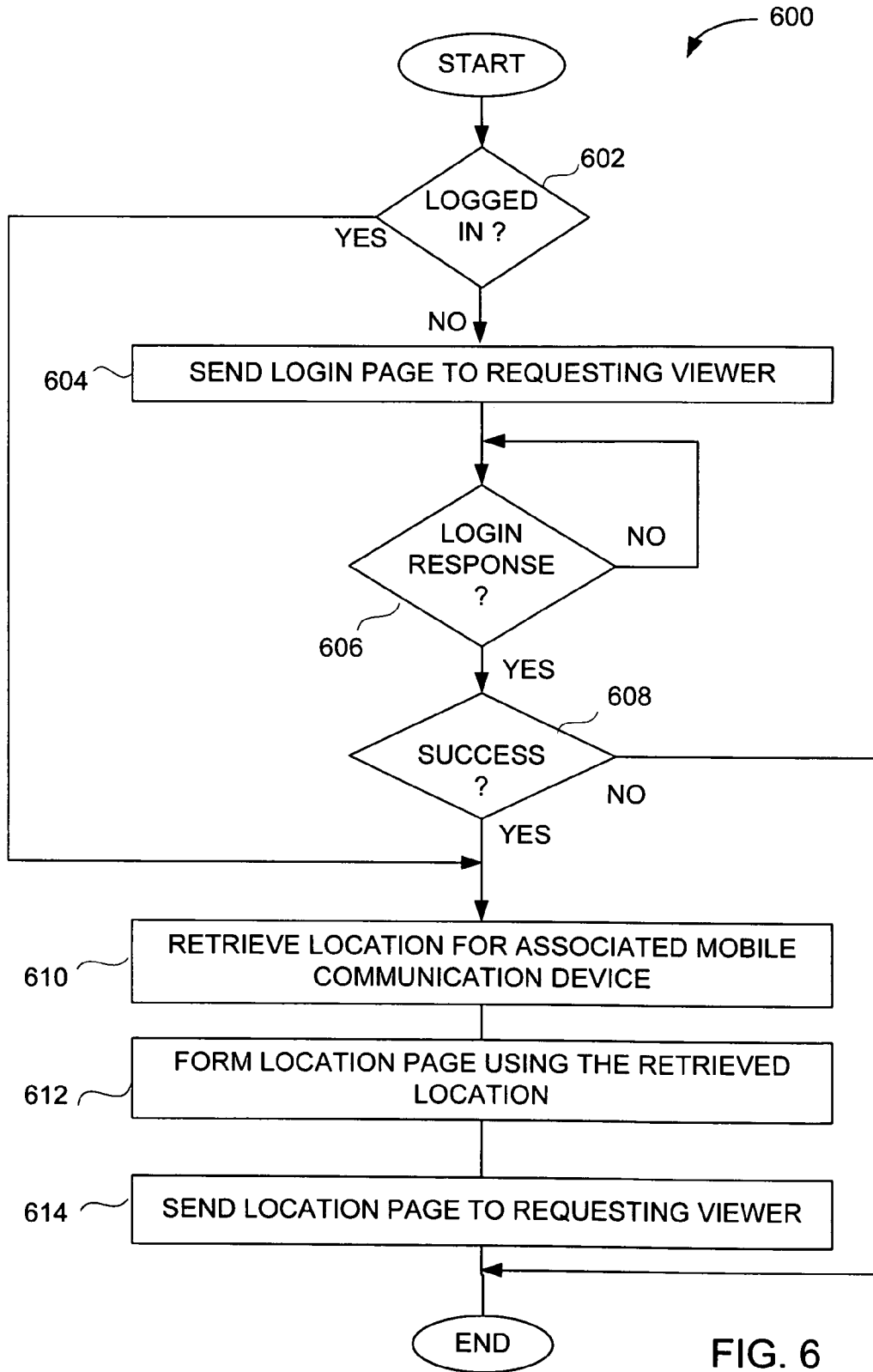


FIG. 6

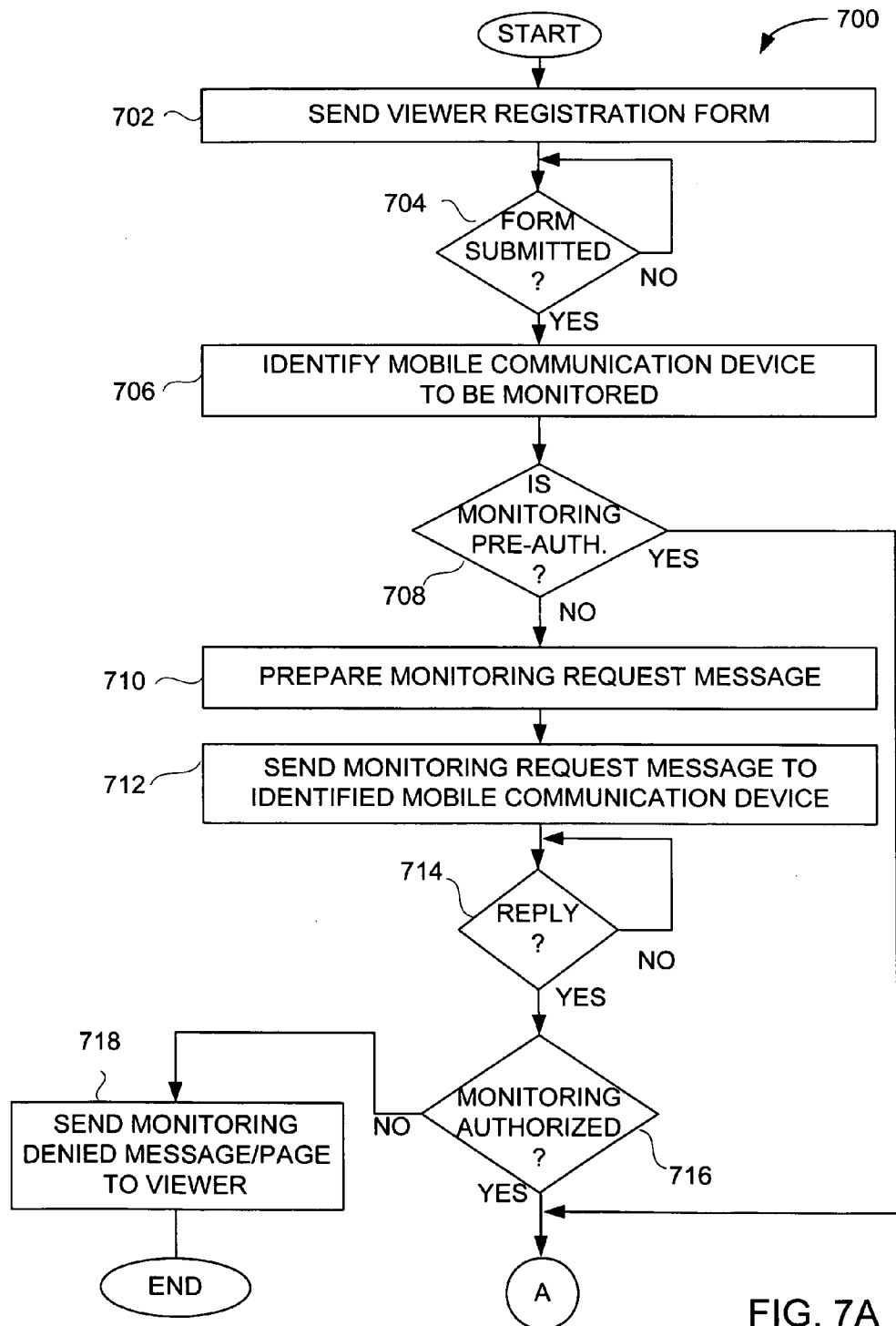


FIG. 7A

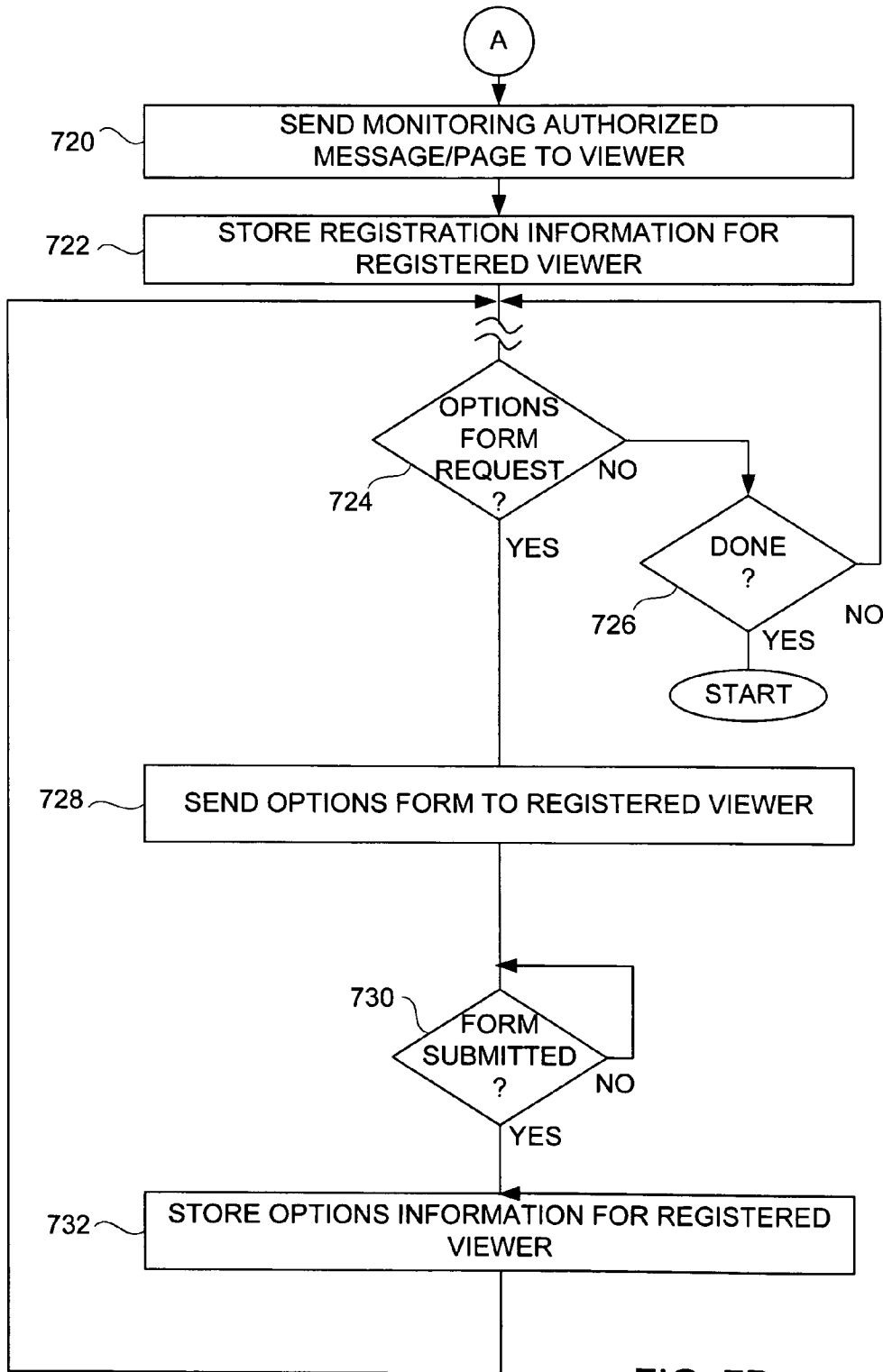


FIG. 7B

METHOD AND SYSTEM FOR LOCATION TRACKING

CROSS-REFERENCE TO RELATED APPLICATION

This application is a continuation of U.S. patent application Ser. No. 09/797,517, filed Feb. 28, 2001 entitled "METHOD AND SYSTEM FOR LOCATION TRACKING", which is hereby incorporated by reference herein, and which application claims the benefit of U.S. Provisional Patent Application No. 60/185,480, filed Feb. 28, 2000, and entitled "METHOD AND SYSTEM FOR LOCATION TRACKING", which is hereby incorporated by reference herein.

BACKGROUND OF THE INVENTION

1. Field of the Invention

The present invention relates to computing or communication devices and, more particularly, to location tracking of computing or communication devices.

2. Description of the Related Art

Today, various types of or computing devices having communication capabilities (e.g., wireless communication devices) are available. Examples of computing devices having communication capabilities include pagers, mobile phones, personal digital assistants (PDAs), palm-top computers, and electronic schedulers.

Recently, computing devices have been able to detect their location through Global Positioning Satellites (GPS) or with the assistance of a network (e.g., cellular network). As an example, U.S. Pat. No. 5,959,557 describes a system in which a GPS receiver is used to measure a position of a mobile unit (i.e., vehicle), and reports the position on a map. However, such conventional approaches do not allow for control and general utilization of the position information.

Thus, there is a need for ways to utilize position information of mobile computing devices.

SUMMARY OF THE INVENTION

Broadly speaking, the invention relates to techniques for location tracking, location utilization, and dissemination and management of location information.

The invention can be implemented in numerous ways including, a method, system, device, and a computer readable medium. Several embodiments of the invention are discussed below.

As a location monitoring system, one embodiment of the invention can, for example, include at least: a plurality of mobile computing devices supported by a wireless network, each of the mobile computing devices being associated with and proximate to an object whose location is being monitored; and a web server coupled to a wired network that couples to the wireless network, the web server storing a plurality of locations of each of the mobile computing devices and enabling authorized users to access the locations of each of the mobile computing devices via the wired network.

As a method for monitoring position of objects, one embodiment of the invention can, for example, include at least the acts of: affixing a mobile computing device to an object to be monitored; periodically activating at least a portion of the mobile computing device to determine its location; subsequently transmitting the location to a web server through at least in part a wireless network; and displaying the

location of the object to a monitoring party via the monitoring parties access to the web server.

As a method for monitoring position of a plurality of objects, each of the objects being or having a mobile computing device proximate thereto, one embodiment of the invention can, for example, include: obtaining locations for the mobile computing devices and thus the objects proximate thereto; receiving a request to view the location pertaining to a particular one or more of the objects; and delivering a response to the request, the response including the location pertaining to the particular one or more of the objects.

As a method for monitoring position of a plurality of objects, each of the objects being or having a mobile computing device proximate thereto, one embodiment of the invention can, for example, include at least the acts of: obtaining locations for the mobile computing devices and thus the objects proximate thereto; comparing the locations against at least one predetermined location criteria; and sending an electronic notification to a predetermined destination based on the comparing.

As a location monitoring system, one embodiment of the invention can, for example, include at least: a plurality of mobile computing devices supported by a wireless network, each of the mobile computing devices being associated with and proximate to a corresponding object; and a web server operatively connectable to the wireless network, the web server storing locations of each of the mobile computing devices, and the web server enabling authorized users to access the locations of the mobile computing devices. The authorized users need not be proximate to the objects whose locations they are authorized to access. The web server can determine whether an electronic notification is to be sent to an authorized user based on the location of at least one of the mobile computing devices corresponding to an object. The web server can send an electronic notification to the authorized user when it has been determined that an electronic notification is to be sent to the authorized user. The one or more notification locations can be defined by the authorized user through interaction with the web server, and the one or more notification locations that have been defined can be assigned location labels by the authorized user through interaction with the web server. The location labels assigned by the authorized user can also be personal to the authorized user. The web server can determine whether the location of the mobile computing device corresponding to the object is at one of the one or more notification locations, and can generate the electronic notification when it is determined that the location of the mobile computing device is at one of the notification locations.

As a computer readable medium including at least executable computer program code tangibly stored thereon for monitoring position of objects, each object having a mobile electronic device corresponding thereto, the mobile electronic devices capable of communicating in a wireless manner, one embodiment of the invention can, for example, include at least: computer program code for receiving a location of an object at a server via a wireless network, the location being determined using the mobile electronic device corresponding to the object; computer program code for determining whether the location of the mobile electronic device corresponding to the object is at one of one or more notification locations; computer program code for determining whether a notification is to be sent to an authorized party based on the location of the mobile electronic device corresponding to the object being at one of one or more notification locations; and computer program code for sending the notification to the authorized party when it has been determined

that a notification is to be sent to the authorized party. At least one of the one or more notification locations can be defined by an interested party through interaction with the server, and at least one of the one or more notification locations that have been defined can be assigned a location label by the interested party through interaction with the server.

As a method for monitoring position of objects, each object having a mobile computing device provided therewith, the mobile computing devices capable of communicating over a wireless network, one embodiment of the invention can, for example, include: defining, by a monitoring party through interaction with a web server, one or more notification locations; assigning, by the monitoring party through interaction with the web server, location labels to the one or more notification locations that have been defined; receiving, at the web server via the wireless network, a location of the mobile computing device corresponding to the object; determining whether a notification is to be sent to an authorized party based on (i) the location of the mobile computing device corresponding to the object, and (ii) the one or more notification locations; and sending a notification to the authorized party when it has been determined that a notification is to be sent to the authorized party.

Other aspects and advantages of the invention will become apparent from the following detailed description taken in conjunction with the accompanying drawings which illustrate, by way of example, the principles of the invention.

BRIEF DESCRIPTION OF THE DRAWINGS

The invention will be readily understood by the following detailed description in conjunction with the accompanying drawings, wherein like reference numerals designate like structural elements, and in which:

FIG. 1 is a block diagram of location monitoring system according to one embodiment of the invention;

FIG. 2 is a flow diagram of client-side location processing according to one embodiment of the invention;

FIG. 3 is a flow diagram of server-side location management processing according to one embodiment of the invention;

FIG. 4 is a flow diagram of server-side location processing according to one embodiment of the invention;

FIG. 5A is a diagram of an exemplary authorization table in a location database;

FIG. 5B is a diagram of an exemplary location table in a location database;

FIG. 6 is a flow diagram of server-side location monitoring processing; and

FIGS. 7A and 7B are flow diagrams of server-side registration processing.

DETAILED DESCRIPTION OF THE INVENTION

The invention pertains to techniques for location tracking, location utilization, and dissemination and management of location information.

Embodiments of this aspect of the invention are discussed below with reference to FIGS. 1-7B. However, those skilled in the art will readily appreciate that the detailed description given herein with respect to these figures is for explanatory purposes as the invention extends beyond these limited embodiments.

FIG. 1 is a block diagram of location monitoring system **100** according to one embodiment of the invention. A location monitoring server **102** manages location information pertaining to a plurality of mobile units **104**. The mobile units are

typically attached to objects, such as people, vehicles, or containers. A wireless network **106** enables the mobile units **104** to communicate with the location monitor server **102**. In one embodiment, the wireless network **106** couples to the Internet **108** (or other data network). The location monitoring server **102** also couples to the Internet **108**. Location information associated with the mobile units **104** is thus able to be delivered to the location monitoring server **102** through the wireless network **106** and the Internet **108**. A location database **110** coupled to the location monitoring server **102** can store the location information for the mobile units **104**. The location monitoring server **102** is then able to utilize the location information by accessing the data stored in the location database **110**. The location database **110** can reside on the location monitoring server or a separate local or remote computer.

The location monitoring system **100** can also include remote computers **112** and **114** that can couple to the Internet **108** through various means. Once coupled to the Internet **108**, the remote computers **112** and **114** can access the location monitoring server **102** to receive location related services or to otherwise make use of the location information.

Each mobile unit can obtain location information on its location and forward the location information to the location monitoring server (web server). The location information can be forwarded to the location monitoring server by a variety of ways. One way is through use of a Short Message Service (SMS) message. The location information can also be obtained by a variety of methods. One method is to provide a Global Positioning Satellite (GPS) device within the mobile units. With GPS, the location information obtained can be distances to a plurality of global positioning satellites or can be a determined location from processing of the distances. When only the distances are provided, then the mobile unit merely sends the distances and need not perform processing to determine the location from the distances (instead a server can do so). Another method is to use location information obtained from a wireless network. With this method, the wireless network can provide location information on some or all of said mobile computing devices to the location monitoring server. In this case, the mobile units need not participate in obtaining the location information. As yet another method, a combination of these or other methods can be used to gather an accurate location for the mobile devices. For example, the location monitoring server could be provided with location information provided from the wireless network as well as location information provided by the mobile units themselves. By using the location information from both sources, more accurate and reliable location determination is able to be performed.

FIG. 2 is a flow diagram of client-side location processing **200** according to one embodiment of the invention. The client-side location processing **200** is performed on a client device, such as the mobile units **104** illustrated in FIG. 1.

The client-side location processing **200** initially powers-up **204** the location detection hardware within the client device. Next, the current location of the mobile communication device (client device) is determined **206**. A decision **208** then determines whether the current location (CL) is greater than the previous location (PL) by more than a delta amount (Δ). When the decision **208** determines that the current location is not greater than the previous location by more than the delta amount, the current location is sent **208** to the location monitoring server. Here, the current location can be sent to the location monitoring server in a variety of different electronic ways. These ways include email, file transfer, etc. Then, the previous location is set **210** equal to the current location.

5

Following the operation **210**, as well as directly following the decision **208** when the current location does not exceed the previous location by more than the delta amount, the location detection hardware within the mobile communication devices is powered-down **212**. Following the operation **212** the client-side location processing **200** is complete and ends.

According to this embodiment, the client device powers up to send its current location to a location monitoring server and then powers down to conserve power usage. In the embodiment shown in FIG. 2, the current location is sent to the location monitoring server only when it differs from the previous location by more than a predetermined amount. This conserves not only network bandwidth but also power usage at the client device.

Alternatively, the new location could be determined and/or sent only after a sensor internal to the client device (mobile unit) indicates that it has undergone significant movement since the previous location was obtained. A wide variety of sensors can be used. For example, motion sensors are readily available that indicate distances walked or run. Using such a sensor would reduce the frequency with which the new location should be determined and/or transmitted, thus saving network bandwidth and conserving power consumption. Such a motion sensor can be built into the client device, then if minimal motion detected, then no location detection need be triggered (or triggered less frequently). This provides automatic shut down of circuitry within the client device when the client device is not moving, in the evening (e.g., user sleeping), in a meeting, in one's office at work, etc.

As another alternative, invoking of the client-side location processing **200** can be performed periodically in accordance with a predetermined period. The predetermined period for the periodic location determination can vary with time of day and day of week. For example, the location determination can be made more frequently during the day and less frequently in the evening. As a further example, different predetermined period can be assigned for different days of the week.

As still another alternative, the client-side location processing **200** can be invoked only when a thermal sensor provided with the client device indicates that the mobile device is being worn by its user. Here, the thermal sensor could be utilized to effectively turn off the location monitoring or transmission circuitry and thus conserve power when the client device is not being worn by its user.

As yet still another alternative, the location monitoring server or some other server could send a request for location information to a client device and thus invoke the acquisition of the current location on the client device. In this regard, the request for the location information could be sent to the client devices only when such information is being remotely monitored by another. Such techniques would also facilitate conservation of power utilization on the client device as well as network bandwidth.

The determination of the location of the client device can thus be triggered or invoked by the client device itself or a location monitoring server (or other remote server) using any of a variety of ways (used separately or in combination). The location of the client device (mobile device) can be determined by the client device itself (e.g., using GPS), by a wireless network infrastructure, or through a combination of both.

FIG. 3 is a flow diagram of server-side location management processing **300** according to one embodiment of the invention. The server-side location management processing **300** begins with a decision **302** that determines whether a location update message has been received. Here, the location update message is a message being sent to the location moni-

6

toring server by a particular one of the mobile units. When the decision **302** determines that a location update message has been received, then server-side location processing is performed **304**. The server-side location processing is able to determine the location of the mobile unit (mobile communication device) and store the location into a location database, such as the location database **110** as illustrated in FIG. 1. Additionally, the server-side location processing can notify interested registered viewers. Additional information on the server-side location processing is discussed below with respect to FIG. 4.

On the other hand, when the decision **302** determines that a location update message has not been received, then a decision **306** determines whether a location monitoring request has been received. When the decision **306** determines that a location monitoring request has been received, server-side location monitoring processing is performed **308**. As an example, a location monitoring request is received by remote computer, such as one of the computers **112** and **114** illustrated in FIG. 1. The server-side location monitoring processing is able to provide viewers (e.g., registered viewers at the remote computers) with location or position of the one or more mobile units (or associated objects) of interest. The server-side location monitoring processing is further discussed below with respect to FIG. 6.

Alternatively, when the decision **306** determines that a location monitoring request has not been received, then a decision **310** determines whether a registration request has been received. Typically, the registration request would be received at the location monitoring server and would have been sent by one of the remote computers **112** or **114** (or their users). In any case, when the decision determines that a registration request has been received, server-side registration processing is performed **312**. The server-side registration processing generally operates to register a user, or the user's computer, for use with the location monitoring system such that location information is able to be accessed and viewed on the viewer's computer. In this regard, various features provide for the mobile users to control who is able to view their location, as well as to send alerts or notifications to authorized registered viewers when certain location-based events occur. Additional details on the server-side registration processing are discussed below with respect to FIGS. 7A and 7B.

Following the operations **304**, **308** and **312**, the server-side location management processing **300** is complete and ends. However, the server-side location management processing **300** is effectively invoked when an incoming message or request is received at the location monitoring server.

Although not shown in FIG. 3, when a location monitoring request is received from a monitoring party, prior to performing the server-side location monitoring processing, the monitoring party must login with an appropriate user name and/or password. This allows restricted access to the location information. In one embodiment, the users of the mobile units can control whether monitoring parties are given access to their location information by authorizing certain monitoring parties.

FIG. 4 is a flow diagram of server-side location processing **400** according to one embodiment of the invention.

The server-side location processing **400** is, for example, performed by a location monitoring server, such as the location monitoring server **102** illustrated in FIG. 1. The server-side location processing **400** initially receives **402** location information. Typically, the location information is received from a mobile communication device (mobile unit) and/or a carrier network (e.g., wireless network). Next, the location of the mobile communication device is determined **404** based on

at least the location information. Here, the location information could itself be sufficient to enable the determination of the location of the mobile communication device. Alternatively, the location information could be combined with other information in order to determine the location of the mobile communication device (or to more accurately determine the location of the mobile communication device). In another embodiment, the location information could actually indicate the location. In any case, once the location of the mobile communication device has been determined **404**, the location is stored **406** in a location database. As an example, the location database can be the location database **110** illustrated in FIG. 1.

Next, a decision **408** determines whether a notification is needed. Here, the server-side location processing **400** is able to send notifications to registered viewers as appropriate. The decision **408** determines whether a notification is needed to inform one or more registered viewers about the location information that has just been received and processed. Hence, when the decision **408** determines that a notification is needed, a notification message is prepared **410**. Then, the notification message is sent **412** to the one or more appropriate registered viewers. Following the operation **412**, as well as directly following the decision **408** when no notifications are needed, the server-side location processing **400** is complete and ends.

As noted above, the server-side location processing **400** includes the decision **408** that determines whether any notification is needed. Here, based on the location of the mobile communication device, various notifications can be initiated. The various notifications can, for example, alert of a predetermined location, alert of an unauthorized region, alert of change in location, etc. The notification can be sent to the monitoring party through an email message (including two-way pager message), an instant response web-based message, through a web page provided at the mobile communication device, telephone message, and the like.

FIG. 5A is a diagram of an exemplary authorization table **500** in a location database. The exemplary authorization table **500** includes a row of information for each mobile device being monitored. Each row contains information on: mobile device identifier, user, supervisor (monitoring party), password, and whether logged in.

FIG. 5B is a diagram of an exemplary location table **550** in a location database. The exemplary location table **550** includes a row of location information for each of the mobile devices being monitored. Each row contains information on: mobile device identifier, current location, and previous location. The location can include much more historical information to keep a log of the locations of the mobile device over an extended period of time (e.g., day, week, month, year).

FIG. 6 is a flow diagram of server-side location monitoring processing **600** according to one embodiment of the invention. The server-side location monitoring processing **600** begins with a decision **602** that determines whether a requesting viewer (monitoring party) has logged-in. Here, typically a request is received from a requesting viewer that seeks to either to log-in or to receive a location page. Hence, the decision **602** initially determines whether the requesting viewer is logged-in. When the decision **602** determines that the requesting viewer is not yet logged-in, then a log-in page is sent **604** to the requesting viewer. Then, a decision **606** waits for a log-in response. When the decision **606** determines that a log-in response has not yet been received, the server-side location monitoring processing **600** effectively awaits a log-in response (or a suitable time-out). Once the decision **606** determines that a log-in response has been received, then

a decision **608** determines whether the log-in is successful. When the decision **608** determines that the log-in is not successful, then the server-side location monitoring processing **600** is complete and ends with the requesting viewer being denied access to the location related information. On the other hand, when the decision **608** determines that the log-in has been successful, as well as directly following the decision **602** when the requesting viewer is already logged-in, the location for the associated mobile communication device (mobile unit) is retrieved **610**. As an example, the location can be retrieved from the location database **110** by the location monitoring server **102** illustrated in FIG. 1. Then, a location page using the retrieved information can be formed **612**. Here, the location page represents the formatting of the location information into a suitable format, such as a document, that can be delivered to the requesting viewer. As an example, the location page can be a marked-up language document such as HTML, XML, HDML, or other markup language. The location page can also be customized for the type of computing device being utilized by the requesting viewer. Then, the location page is sent **614** to the requesting user. Following the operation **614**, the server-side location monitoring processing **600** is complete and ends with the requesting viewer having received the requested location information.

Following successful login by a requesting viewer (monitoring party), the location for the mobile communication device that the requesting viewer has been authorized to receive is able to be retrieved. Then, the location is provided (i.e., sent) to the requesting viewer. In one embodiment, the location is part of a web page that is sent to the requesting viewer.

A server-side registration processing allows a viewer (requesting viewer) to request to view the location of a particular mobile communication device or its associated object. Access is denied if the viewer is not authorized. In one embodiment, the authorization can be controlled by the owner or user of the particular mobile communication device. The server-side registration processing also allows the viewer to set options. The options that can be set are numerous. Examples of the options include notifications or alerts, type of alert or notification (phone, pager, email, etc.), unauthorized or authorized locations, save history or not, labels for different locations (e.g., home, school, work, etc.). By saving the history (i.e., location history), the viewer is able to subsequently examine a history of movement. The history of movement can be presented to the viewer in textual or graphical formats.

FIGS. 7A and 7B are flow diagrams of server-side registration processing **700** according to one embodiment of the invention. The server-side registration processing is, for example, performed by the location monitoring server **102** illustrated in FIG. 1.

The server-side registration processing **700** initially sends **702** a viewer registration form to a user attempting to register with the location monitoring server. As an example, the viewer registration form can be delivered to a computer associated with the user over the Internet and be displayed in a browser application associated with the user's computer. After the viewer registration form has been sent **702** to the viewer, a decision **704** determines whether the registration form has been submitted. Here, the server-side registration processing **700** is awaiting the return of the viewer registration form. When the decision **704** determines that the viewer registration form has not been returned, then the server-side registration processing **700** awaits its submission. On the other hand, when the decision **704** determines that the viewer registration form has been submitted (or times-out), then the

mobile communication device to be monitored is identified **706**. The mobile communication device to be monitored can be identified **706** from the information provided in the viewer registration form or from other information obtained from the viewer (e.g., from a separate page or form submitted by the viewer).

Next, a decision **708** determines whether monitoring of the particular mobile communication device has been pre-authorized. When the decision **708** determines that the monitoring for the particular mobile communication device has not been pre-authorized, then a monitoring request message is prepared **710**. The monitoring request message is then sent **712** to the particular mobile communication device identified **706**. At this point, the server-side registration processing **700** is effectively waiting for a reply from the particular mobile communication device or its user as to whether or not the requested monitoring is authorized. When a decision **714** receives a reply to the request for authorization, then a decision **716** determines whether the reply has authorized monitoring. When the decision **716** determines that monitoring has not been authorized (i.e., monitoring has been denied) then a monitoring denied message/page is sent **718** to the viewer. Thereafter, a server-side registration processing **700** is complete and ends.

Following the decision **716** when the monitoring has been authorized, as well as directly following the decision **708** when the monitoring has been pre-authorized, a monitoring authorized message/page is sent **720** to the viewer. The monitoring authorized message/page informs the viewer that the requested monitoring of the particular mobile communication device or its associated object has been approved. Then, registration information for the registered viewer is stored **722**.

Thereafter, whenever a registered user desires to set options with respect to the manner in which they monitor location of mobile communication devices or its associated object, such registered viewers can complete and submit an options form. Hence, a decision **724** determines whether an options form request has been received. When the decision **724** determines that an options form request has not been received, then a decision **726** determines whether the server-side registration processing **700** is complete. When the decision **726** determines that the registration is complete (done), then the server-side registration processing **700** is complete and ends. On the other hand, when the decision **726** determines that the server-side registration processing **700** is not complete, then the server-side registration processing **700** returns to repeat the operations following the operation **722**.

Alternatively, when the decision **724** determines that an options form request has been received, then an options form is sent **728** to the registered viewer. Then, a decision **730** determines whether the options form has been submitted. When the decision **730** determines that the options form has not yet been submitted, then the server-side registration processing **700** awaits submission of such a form. When a decision **730** determines that the options form has been submitted, then the options information provided by the options form is stored **732** for the registered viewer. Following the operation **732**, the server-side registration processing **700** returns to repeat the operations following the operation **722**.

It should be noted that the server-side registration processing **700** need not wait for the form submission at operations **704** or **730**, or the reply message at operation **714**, but can instead utilize a database or other data store to store state information such that the server-side registration processing **700** can proceed efficiently without being blocked or held-up while waiting for feedback from viewers or users of mobile

communication devices. Such is well known in the programming fields, particularly with Internet programming.

Still further the invention is suitable for tracking delivery or maintenance personnel or vehicles. When a delivery or service appointment is made, you can receive a code for the truck or person that is going perform the delivery or service. Then, on the delivery day (days) when the truck or person is to deliver to or service one's home or business, an alert message or notification can be sent to the requestor (e.g., home owner or office manager). As examples, the message or notification is electronic and include a page, email or telephone type messages or notifications. Hence, if the homeowner is impatiently waiting for the delivery, they can access the location of the truck or person that is to perform the delivery or service. Still further, the requestor may also obtain schedule information on the person or vehicle, and thus determine how many other are scheduled before you. The schedule could also be updated by the truck or person (or their business) to reflect an up-to-date version through out their day. Hence, the requestor is able to obtain additional information over the Internet without have to wait impatiently or having to phone the associated business for information.

The mobile unit (client device, mobile communications device or mobile computing device) is, for example, one of a pager, mobile phone, personal digital assistant, or reduced size portable computing device.

U.S. Pat. No. 5,959,557 is hereby incorporated herein by reference.

The invention can, at least partly, be embodied as computer readable code (computer readable program code) on a computer readable medium. The computer readable medium is any data storage device that can store data which can be thereafter be read by a computer system. Examples of the computer readable medium include read-only memory, random-access memory, CD-ROMs, magnetic tape, and optical data storage devices. The computer readable medium can also be distributed over a network coupled computer systems so that the computer readable code is stored and executed in a distributed fashion.

The advantages of the invention are numerous. Different embodiments or implementations may yield one or more of the following advantages. One advantage of the invention is that location of objects can be tracked via the Internet. Another advantage of the invention is that objects, such as persons, can control the dissemination of their location information. Another advantage of the invention is that alerts or notification can be triggered based on locations of objects. Another advantage of the invention is that mobile computing devices providing location monitoring capabilities are small (e.g., wearable) and offer low power consumption (e.g., long battery life). Another advantage of the invention is that embodiments can operate without user input or actions.

The many features and advantages of the present invention are apparent from the written description and, thus, it is intended by the appended claims to cover all such features and advantages of the invention. Further, since numerous modifications and changes will readily occur to those skilled in the art, it is not desired to limit the invention to the exact construction and operation as illustrated and described. Hence, all suitable modifications and equivalents may be resorted to as falling within the scope of the invention.

The invention claimed is:

1. A location monitoring system, comprising:
 - one or more mobile electronic devices supported by a wireless network, each of said mobile electronic devices being associated with and proximate to a corresponding object; and

11

a computer configured to store locations of each of said mobile electronic devices, and said computer enabling authorized users to access the locations of said mobile electronic devices,
 wherein the authorized users do not have to be proximate to the objects whose locations they are authorized to access,
 wherein said computer determines whether notification should be sent to an authorized user based on the location of a mobile electronic device corresponding to an object, the mobile electronic device being one of said mobile electronic devices,
 wherein said computer sends an electronic notification to the authorized user when it has been determined that notification should be sent to the authorized user,
 wherein one or more notification locations are defined for the authorized user through interaction with said computer, and wherein at least one of the one or more notification locations is assigned a location label by the authorized user through interaction with said computer, wherein the location label assigned by the authorized user is personal to the authorized user, and
 wherein said computer determines whether the location of the mobile electronic device corresponding to the object is at one of the one or more notification locations, and generates the electronic notification when it is determined that the location of the mobile electronic device is at one of the notification locations.

2. A location monitoring system as recited in claim 1, wherein each of said mobile electronic devices operates to obtain location information of its location and to wirelessly forward the location information to said computer.

3. A location monitoring system as recited in claim 1, wherein the object is a person, a vehicle or a package.

4. A location monitoring system as recited in claim 1, wherein the electronic notification is an electronic message, and
 wherein the electronic message is automatically transmitted to the authorized user when it is determined that the location of the mobile electronic device is at one of the notification locations.

5. A location monitoring system as recited in claim 1, wherein a requestor requests that said computer provide the location of the object, and
 wherein, when a requestor requests that said computer provide the location of the object, said computer returns a response to the requestor, the response including the location of the object based on the location of the corresponding mobile electronic device.

6. A location monitoring system as recited in claim 1, wherein the authorized user must be registered with said computer before the authorized user is authorized to access the location of one or more of said mobile electronic devices,
 wherein at least one attribute of the electronic notification can depend on information provided by the authorized user during the registration of the authorized user, and
 wherein the information provided by the authorized user during registration includes at least one notification condition.

7. A location monitoring system as recited in claim 6, wherein the at least one notification condition specifies a type of notification or how often notification is to be provided.

8. A location monitoring system as recited in claim 1, wherein access to locations of each of said mobile electronic devices is controlled by owner or user of the corresponding mobile electronic device.

12

9. A location monitoring system as recited in claim 1, wherein said location monitoring system is configured to enable the authorized user to set at least one delivery criterion regarding electronic notifications to be provided.

10. A location monitoring system as recited in claim 1, wherein the mobile electronic device is a mobile phone.

11. A location monitoring system as recited in claim 10, wherein said computer maintains a history of locations of the mobile device, and wherein said computer is configured to present the history of locations to the authorized party in at least a graphical form.

12. A location monitoring system as recited in claim 10, wherein the object is a person, and wherein the mobile phone is available for use by the person.

13. A location monitoring system as recited in claim 12, wherein the electronic notification is an electronic message, and
 wherein the electronic message is automatically transmitted to the authorized user when it is determined that the location of the mobile electronic device is at one of the notification locations.

14. A location monitoring system as recited in claim 13, wherein the notification being sent is an electronic mail or instant message.

15. A location monitoring system as recited in claim 13, wherein said location monitoring system is configured to enable the authorized user to select from a plurality of options regarding electronic notifications to be provided.

16. A location monitoring system as recited in claim 12, wherein access to the location of the mobile phone is controlled by the person via the mobile phone.

17. A location monitoring system as recited in claim 12, wherein said location monitoring system is configured to determine whether the person using the mobile phone has authorized the authorized party to access the location of the mobile phone.

18. A location monitoring system as recited in claim 17, wherein said location monitoring system maintains a history of locations of the mobile phone, and wherein said location monitoring system is configured to present the history of locations to the authorized party in at least a graphical form.

19. A location monitoring system as recited in claim 12, wherein said location monitoring system is configured to restrict access to the location of the mobile phone to only those one or more users that the person using the mobile phone has authorized device is at one of the notification locations.

20. A location monitoring system as recited in claim 12, wherein said location monitoring system is configured to send an access request to the mobile phone to determine if a requestor is allowed to access to the location of the mobile phone, and to receive from the mobile phone an access response to the access request, the access response indicating whether or not the requestor is permitted to access the location of the mobile phone.

21. A location monitoring system as recited in claim 12, wherein said location monitoring system comprises a web server, and
 wherein the authorized user is able to log into the web server to gain access to one or more locations of the mobile phone.

22. A location monitoring system as recited in claim 12, wherein said location monitoring system provides an electronic notification to the mobile phone, the electronic notification indicating that the location of the mobile device is being monitored.

13

23. A non-transitory computer readable medium including at least executable computer program code tangibly stored thereon for monitoring position of one or more objects using one or more mobile electronic devices, each object having a mobile electronic device corresponding thereto, the one or more mobile electronic devices being capable of communicating in a wireless manner, said computer readable medium comprising:

computer program code for receiving a location of an object at a server via a wireless network, the location being associated with the mobile electronic device corresponding to the object;

computer program code for determining whether the location of the mobile electronic device corresponding to the object is at one of one or more notification locations for which a notification is to be sent to an interested party based on the location of the mobile electronic device corresponding to the object being at one of one or more notification locations; and

computer program code for generating and sending the notification to the interested party when it has been determined that a notification is to be sent to the interested party based on the location of the mobile electronic device corresponding to the object being at one of one or more notification locations; and

computer program code for receiving at least one of the one or more notification locations that has been defined by the interested party through interaction with the server, wherein at least one of the one or more notification locations includes a location label that is for use by the server with respect to the interested party, and

wherein the notification sent to the interested party includes the location label when it is determined by said computer code for determining that the location of the mobile electronic device corresponding to the object is at the notification location corresponding to the location label.

24. A computer readable medium as recited in claim 23, wherein access to locations of each of the mobile electronic devices is controlled by owner or user of the corresponding mobile electronic device.

25. A computer readable medium as recited in claim 23, wherein said computer readable medium further comprises: computer program code for providing location data to display the location of the mobile electronic device corresponding to the object to the interested party via accessing the server through the Internet, wherein the interested party does not have to be proximate to the object.

26. A computer readable medium as recited in claim 23, wherein at least one of the one or more notification locations pertains to a predetermined location,

wherein said computer program code for determining comprises computer program code for determining whether the location of the mobile electronic device corresponding to the object is at the predetermined location, and wherein said computer program code for generating and sending the notification comprises computer program code for sending the notification when said computer program code for determining determines that the location of the mobile electronic device corresponding to the object is at the predetermined location.

27. A computer readable medium as recited in claim 26, wherein said computer program code for sending the notification operates to send the notification when it is determined that the location of the mobile electronic device has entered the predetermined location.

14

28. A computer readable medium as recited in claim 12, wherein the notification being sent is an electronic mail or instant message.

29. A computer readable medium as recited in claim 23, wherein said computer program code for receiving periodically receives the location of the mobile electronic device, and wherein the period by which said computer program code for receiving operates to receive the location is in accordance with a predetermined schedule, the schedule utilizing a plurality of different periods by which the location is acquired.

30. A computer readable medium as recited in claim 23, wherein said computer program code for receiving periodically receives the location of the mobile electronic device, and wherein the period by which said computer program code for receiving operates to receive the location is different during different times of a day or on different days.

31. A computer readable medium as recited in claim 23, wherein access to locations of each of the mobile electronic devices is controlled by an owner of the corresponding mobile electronic device.

32. A computer readable medium as recited in claim 23, wherein the notification being sent is an electronic mail or instant message.

33. A computer readable medium as recited in claim 23, wherein said computer readable medium comprises:

computer program code for receiving a request for the location of the mobile electronic device corresponding to the object; and

computer program code for returning a response to the request, the response including the location of the mobile electronic device corresponding to the object.

34. A computer readable medium as recited in claim 23, wherein said computer readable medium comprises:

computer program code for receiving a request from a requestor for the location of the mobile electronic device corresponding to the object;

computer program code for determining whether the requestor is authorized to receive the location of the mobile electronic device corresponding to the object; and

computer program code for returning a response to the request if the requestor is determined to be authorized, the response including the location of the mobile electronic device corresponding to the object.

35. A computer readable medium as recited in claim 23, wherein said computer readable medium comprises:

computer program code for receiving a notification condition at the server, the notification condition being associated with the interested party; and

computer program code for determining whether the notification is to be sent to the interested party based on the notification condition.

36. A method for monitoring position of one or more objects using one or more mobile electronic devices, each object having a mobile electronic device provided therewith, the one or more mobile electronic devices being capable of communicating over a wireless network, said method comprising:

receiving at a web server one or more notification locations set by a monitoring party;

receiving at the web server a location label assigned by the monitoring party to at least one of the one or more notification locations;

receiving, at the web server via the wireless network, a location of a mobile electronic device corresponding to an object;

15

determining, at the web server, whether a notification is to be sent to the monitoring party based on (i) the location of the mobile electronic device corresponding to the object, and (ii) the one or more notification locations; and

electronically sending a notification to the monitoring party when it has been determined that a notification is to be sent to the monitoring party,

wherein said determining comprises determining whether the location of the mobile electronic device corresponding to the object is at one of the one or more notification locations, and

wherein said electronically sending comprises (i) generating the notification when said determining determines that the location of the mobile electronic device corresponding to the object is at one of the one or more notification locations, and (ii) sending the notification generated to the monitoring party when said determining determines that the location of the mobile electronic device corresponding to the object is at one of the one or more notification locations,

wherein the notification generated includes at least the location label corresponding to the one of the one or more notification locations where the mobile electronic device corresponding to the object is determined to be located, and

wherein the location label assigned by the monitoring party is for use with respect to the monitoring party, and wherein the notification sent to the monitoring party includes the location label when said determining determines that the location of the mobile electronic device corresponding to the object is at the notification location corresponding to the location label.

37. A method as recited in claim 36, wherein the notification being sent is an electronic message.

38. A method as recited in claim 36, wherein the notification being sent is an electronic text message.

39. A method as recited in claim 36, wherein access to locations of each of the mobile electronic devices is controlled by a user of the corresponding mobile electronic device.

40. A method as recited in claim 36, wherein said method further comprises:

displaying the location of the mobile electronic device corresponding to the object to a requestor via accessing the web server through the Internet,

wherein before the location is displayed to the requestor the monitoring party has to be authorized.

41. A method as recited in claim 36, wherein said receiving of the location periodically receives the location of the mobile electronic device, and wherein the period by which said receiving operates to receive the location of the mobile electronic device is different during different times of a day or on different days.

42. A method as recited in claim 36, wherein at least one of the one or more notification locations pertains to a predetermined location, and

wherein said method comprises:

electronically transmitting a notification that the object is in the predetermined location.

43. A method as recited in claim 42, wherein the notification being sent is an electronic mail or instant message.

44. A method as recited in claim 36,

wherein the object is a person, and

wherein at least one of the one or more notification locations pertains to a predetermined location, and

16

wherein said sending of the notification comprises transmitting a notification indicating that the object has entered the predetermined location.

45. A method for monitoring position of one or more persons using one or more mobile phones, each person having a mobile phone provided therewith, the one or more mobile phones being capable of communicating over a wireless network, said method comprising:

receiving at a server one or more notification locations set by a monitoring party;

receiving at the server one or more notification options requested by the monitoring party;

receiving at the server a location label assigned by the monitoring party to at least one of the one or more notification locations;

receiving a location of a mobile phone corresponding to a person;

determining whether the monitoring party has been authorized to access the location of the mobile phone;

determining whether a notification is to be sent to the monitoring party based on (i) the location of the mobile phone corresponding to the person, (ii) the one or more notification options, (iii) the one or more notification locations, and (iv) whether the monitoring party has been authorized; and

electronically sending a notification to the monitoring party when it has been determined that a notification is to be sent to the monitoring party,

wherein said determining whether a notification is to be sent comprises determining whether the location of the mobile phone corresponding to the person is at one of the one or more notification locations,

wherein said electronically sending comprises (i) generating the notification when said determining whether a notification is to be sent determines that the location of the mobile phone corresponding to the person is at one of the one or more notification locations, and (ii) sending the notification generated to the monitoring party when said determining whether a notification is to be sent determines that the location of the mobile phone corresponding to the person is at one of the one or more notification locations,

wherein the notification generated includes at least the location label corresponding to the one of the one or more notification locations where the mobile phone corresponding to the person is determined to be located, and

wherein the location label assigned by the monitoring party is for use with respect to the monitoring party, and wherein the notification sent to the monitoring party includes the location label when said determining whether a notification is to be sent determines that the location of the mobile phone corresponding to the person is at the notification location corresponding to the location label.

46. A method as recited in claim 45, wherein the notification being sent is an electronic mail or instant message.

47. A method as recited in claim 45, wherein said determining whether the monitoring party has been authorized to access the location of the mobile phone comprises:

sending an access request to the mobile phone to approve a monitoring party's access to the location of the mobile phone; and

receiving from the mobile phone an access response to the access request, the access response indicating whether or not the monitoring party is permitted to access the location of the mobile phone.

17

48. A method as recited In claim 45, wherein said computer comprises a server, and

wherein the monitoring party is able to log into the server to gain access to one or more locations of the mobile phone.

49. A method as recited in claim 45, wherein said method comprises sending an electronic message to the mobile phone, the electronic message indicating that the location of the mobile device is being monitored.

50. A method as recited in claim 45 wherein said receiving of a location of a mobile phone comprises receiving the location of the mobile phone via the wireless network.

51. A method for monitoring position of one or more persons using one or more mobile phones, each person having a mobile phone provided therewith, the one or more mobile phones being capable of communicating over a wireless network, said method comprising:

receiving at a server one or more notification locations set by a monitoring party;

receiving at the server one or more notification options requested by the monitoring party;

receiving at the server a location label assigned by the monitoring party to at least one of the one or more notification locations;

receiving a location of a mobile phone corresponding to a person;

determining whether the monitoring party has been authorized to access the location of the mobile phone;

determining whether a notification is to be sent to the monitoring party based on the one or more notification options requested by the monitoring party, provided that the monitoring party has been authorized; and

electronically sending a notification to the monitoring party when it has been determined that a notification is to be sent to the monitoring party, the notification indicating the location of the mobile phone corresponding to the person,

wherein said electronically sending comprises (i) retrieving the notification generated, and (ii) sending the notification generated to the monitoring party when said determining determines that a notification is to be sent, and wherein the notification being sent is an electronic mail or instant message.

52. A method as recited in claim 51, wherein said determining whether the monitoring party has been authorized to access the location of the mobile phone comprises:

sending an access request to the mobile phone to approve a monitoring party's access to the location of the mobile phone; and

receiving from the mobile phone an access response to the access request, the access response indicating whether or not the monitoring party is permitted to access the location of the mobile phone.

53. A method as recited in claim 51,

wherein the monitoring party is able to log into the server to gain access to one or more locations of the mobile phone.

54. A method as recited in claim 51, wherein said method comprises sending an electronic message to the mobile phone, the electronic message indicating that the location of the mobile device is being monitored.

55. A method as recited in claim 51, wherein said receiving a location of a mobile phone comprises receiving the location of the mobile phone via the wireless network.

56. A method as recited in claim 51, wherein the location label assigned by the monitoring party is for use with respect to the monitoring party, and wherein the notification sent to

18

the monitoring party includes the location label when said determining whether a notification is to be sent determines that the location of the mobile phone corresponding to the person is at the notification location corresponding to the location label.

57. A method as recited in claim 51, wherein the one or more notification options are set with respect to the one or more notification locations.

58. A location monitoring system, comprising:

one or more mobile computing devices supported by a wireless network, each of said mobile computing devices being associated with and proximate to a corresponding object; and

a server operatively connectable to the wireless network, said server configured to store locations of each of said mobile computing devices, and said server enabling authorized users to access the locations of said mobile computing devices via the Internet,

wherein the authorized users do not have to be proximate to the objects whose locations they are authorized to access,

wherein said server determines whether an electronic mail or instant message notification is to be sent to an authorized user based on one or more notification options requested by the authorized user,

wherein said server sends an electronic mail or instant message notification to the authorized user when it has been determined that an electronic mail or instant message notification is to be sent to the authorized user, the electronic mail or instant message notification includes at least the location of at least one of said one or more mobile computing devices corresponding to an object, wherein one or more notification locations are defined by the authorized user through interaction with said server, and wherein the one or more notification locations that have been defined are assigned location labels by the authorized user through interaction with the server, and wherein the one or more notification options are defined by the authorized user through interaction with said server.

59. A location monitoring system as recited in claim 58, wherein said server is further configured to determine whether the location of the mobile computing device corresponding to the object is at one of the one or more notification locations, and generate a notification when it is determined that the location of the mobile computing device is at one of the notification locations, and sends the notification to the authorized user.

60. A location monitoring system as recited in claim 58, wherein each of said mobile computing devices operates to obtain location information of its location and to forward the location information to said server.

61. A location monitoring system as recited in claim 58, wherein at least one of the mobile computing devices associated with a corresponding object is a mobile phone, and wherein the corresponding object is a person.

62. A location monitoring system as recited in claim 61, wherein the location monitoring system acquires the location of the person in accordance with a schedule, the schedule utilizing a plurality of different periods to acquire the location.

63. A location monitoring system as recited in claim 58, wherein at least one object corresponding to one of the mobile computing devices is a person, wherein said server is configured to receive a request from an authorized user for the location of the person, and wherein, when an authorized user requests that said server specify the location of the person, said server provides a

response to the authorized user, the response including the location of the person based on the location of the corresponding one of said mobile computing devices, the corresponding one of said mobile computing devices being a mobile phone.

64. A location monitoring system as recited in claim 58, wherein at least one of the notification options includes how often a notification is to be provided.

65. A location monitoring system as recited in claim 58, wherein the different periods correspond to different days of the week.

66. A location monitoring system as recited in claim 58, wherein access to locations of at least one of said mobile

computing devices is controlled by the owner of the corresponding mobile computing device.

67. A location monitoring system as recited in claim 58, wherein access to locations of at least one of said mobile computing devices is controlled by the user of the corresponding mobile computing device.

68. A location monitoring system as recited in claim 58, wherein said location monitoring system maintains a history of locations of each of said mobile computing devices, and wherein said location monitoring system is configured to present at least a portion of the history of locations of at least one of said one or more corresponding mobile computing devices to the authorized user in at least a graphical form.

* * * * *